



Catene in acciaio inossidabile
Catene con trattamenti superficiali

Stainless steel roller chains
Coated/surface treated chains



1. Catene a rulli in acciaio inox

Le catene a rulli in acciaio INOX, disponibili sia nella Serie Europea sia nella Serie ANSI, trovano impiego in applicazioni situate in ambienti corrosivi per presenza di agenti chimici, di soluzioni acide o alcaline, oppure per funzionamento a temperature al di sotto dello zero o temperature molto elevate, anche se presentano caratteristiche meccaniche generalmente inferiori rispetto alle catene in acciaio al carbonio.

La serie standard è realizzata in acciaio inox AISI 304, una lega di acciaio al cromo-nickel (composizione 18/8 o 18/10), successivamente incrudita per migliorare la resistenza meccanica che, pur essendo leggermente magnetica, può essere utilizzata fino a temperature di 400°C.

2. Catene nichelate e catene zincate

Applicazioni:

Adatte ad ambienti in cui gli agenti contaminanti si depositano e si accumulano, esposte al contatto con l'acqua per il settore alimentare, tessile, cartario, automazione industriale e ovunque siano richieste resistenza alle aggressioni ambientali e affidabilità.

1. Stainless steel roller chains

The stainless steel roller chains, available both in European and ANSI series, are used in applications located in corrosive environments due to the presence of chemical agents, acid or alkaline solutions, or for operation at temperatures below zero or temperatures very high, even though they have mechanical characteristics that are generally lower than those typical of carbon steel chains.

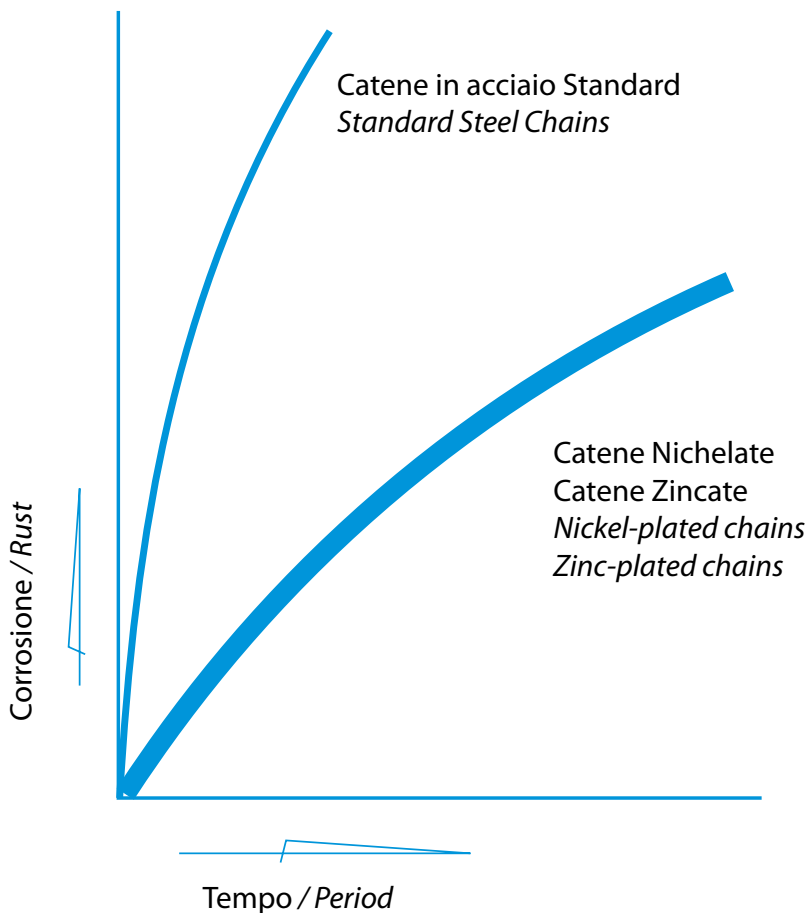
The standard series are made with AISI 304 stainless steel, a chrome-nickel steel alloy (18/8 or 18/10 composition), subsequently work-hardened to improve the mechanical resistance that, although slightly magnetic, can be used up to temperatures of 400 °C.

2. Nickel-plated Chains and Zinc-plated Chains

Applications:

Suitable for environments into which moisture accumulates, power transmission in water, food processing equipment, office printing and textile machines, as well as places where resistance to environmental attacks and reliability are required.

Chain performance refer to ISO JIS, ANSI standard.



2.1 Trattamento superficiale Dacromet

CARATTERISTICHE:

- **Colore:** Bianco chiaro
- **Resistenza alla Temperatura:** trattamento superficiale fino a 250° C
- **Carico Ammissibile:** Pari alle Catene standard Maggiore resistenza rispetto alle catene Inox, nessun fenomeno di infrangimento in presenza di idrogeno
- **Resistenza alla usura:** pari alle catene standard
- **Resistenza alla Ossidazione:** In confronto ai trattamenti superficiali elettrochimici

2.1 Dacromet-plated

FEATURES:

- **Color:** *light white*
- **Temperature tolerance:** *high temperature resistance of the chain coat up to 250° C*
- **Allowable load:** *same as standard chains (higher strength than stainless steel chains, no hydrogen breaking like electroplate chains)*
- **Wear resistance:** *Same as normal chains*
- **Antirust:** *compared with electroplate chains*

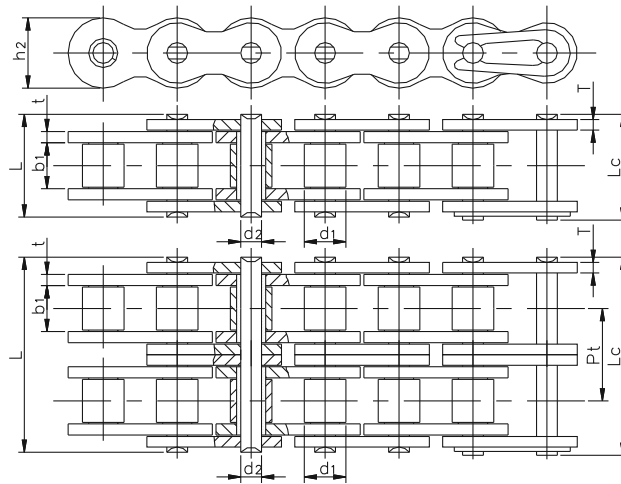
| CATENE / ITEMS | METODO / ANTIRUST TEST METHOD | DURATA / DURABLE TIME (HOUR) |
|---------------------------------------------------------|----------------------------------|------------------------------|
| TRATT. SUP. ELETTROCHIMICO <i>ELECTROPLATE CHAIN</i> | NEBBIA SALINA <i>SALT FOG</i> | 48-96 |
| CATENA PROTETTA <i>HIGHGUARD CHAIN</i> | NEBBIA SALINA <i>SALT FOG</i> | 300-1000 |

2.2 Catene da trasporto leggero

Trattasi di catene trattate superficialmente e con caratteristiche di resistenza all'ossidazione ed alla corrosione, assai vicine, come efficacia, alla qualità delle catene INOX, rispetto alle quali però, presentano carichi di rottura e di lavoro, assai più elevate, uguali, per resistenza, a quelle in acciaio legato e/o al carbonio. Dette catene, sono da impiegarsi in condizioni ambientali assai difficili, in presenza di agenti aggressivi, e nei casi in cui, la sollecitazione alla resistenza ad attacchi di liquidi ed acidi, renda necessaria una protezione superficiale dei componenti, pur non alterandone le connotazioni tecnomeccaniche.

2.2 Light transport chains

These chains are treated on the surface to increase their resistance to corrosion and oxidation, becoming in this way very similar to stainless steel types. The most important difference from those is their greater capacity of standing higher breaking load and loads, quality that usually belong to steel and/or carbon chains. These chains are usually assembled in very difficult working conditions, where aggressive agents are present or when the resistance against acids and liquids involves a superficial protection of components (technomechanics characteristics do not change).

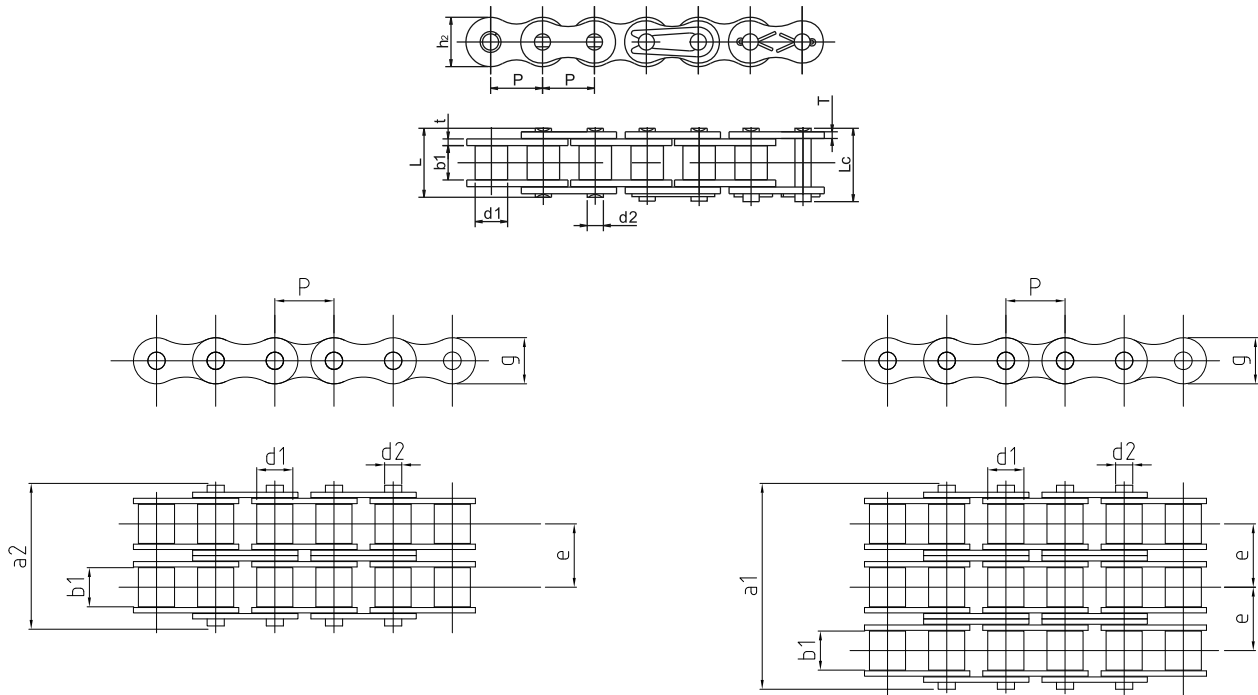
Catene a rulli esenti da lubrificazione ASA / Lubrication free roller chains ANSI

SERIE AMERICANA ASA / ANSI AMERICAN SERIES

| Catena Chain | Passo Pitch | Diam. Rullo Roller diameter | Larghezza interna Width between inner plates | Diametro Perno Pin diameter | Largh. catena ribadita Riveted chain width | | Altezza piastra Plate depth | Spessore piastra Plate thickness | Carico di rottura min. Ultimate tensile strength | Carico di rottura medio Average tensile strength | Peso al metro Weight per meter |
|----------------------|----------------|--------------------------------|-------------------------------------------------|--------------------------------|-----------------------------------------------|--------|--------------------------------|-------------------------------------|-----------------------------------------------------|-----------------------------------------------------|-----------------------------------|
| | P | d ₁ max | b ₁ min | d ₂ max | L max | Lc max | h ₂ max | t/T | Pt | Q min | q ≈ |
| | mm | mm | mm | mm | mm | mm | mm | mm | mm | kN/LB | kg/m |
| 08BSLR INOX | 12.70 | 8.51 | 7.75 | 4.45 | 16.7 | 18.2 | 11.80 | 1.6 | - | 18.0/4091 | 0.69 |
| 08BSLRF1 INOX | 12.70 | 8.51 | 7.75 | 4.45 | 17.3 | 18.7 | 11.80 | 1.6 | - | 18.0/4091 | 0.72 |
| 10BSLR INOX | 15.875 | 10.16 | 9.65 | 5.08 | 19.5 | 20.9 | 14.70 | 1.7 | - | 22.4/5091 | 0.93 |
| 10BSLRF1 INOX | 15.875 | 10.16 | 9.65 | 5.08 | 19.9 | 21.6 | 14.70 | 1.7 | - | 22.4/5091 | 0.97 |
| 12BSLR INOX | 19.05 | 12.07 | 11.68 | 5.72 | 22.5 | 24.2 | 16.00 | 1.85 | - | 29.0/6591 | 1.15 |
| 12BSLRF1 INOX | 19.05 | 12.07 | 11.68 | 5.72 | 22.9 | 24.7 | 16.00 | 1.85 | - | 29.0/6591 | 1.19 |
| 16BSLR INOX | 25.40 | 15.88 | 17.02 | 8.28 | 36.1 | 37.4 | 21.00 | 4.15/3.10 | - | 60.0/13636 | 2.71 |
| 16BSLRF1 INOX | 25.40 | 15.88 | 17.02 | 8.28 | 36.7 | 39.7 | 21.00 | 4.15/3.10 | - | 60.0/13636 | 2.73 |
| 40SLR INOX | 12.70 | 7.95 | 7.85 | 3.96 | 16.6 | 17.8 | 12.00 | 1.5 | - | 14.1/3205 | 0.62 |
| 50SLR INOX | 15.875 | 10.16 | 9.40 | 5.08 | 20.7 | 22.2 | 15.09 | 2.03 | - | 22.0/5045 | 1.02 |
| 60SLR INOX | 19.05 | 11.91 | 12.57 | 5.94 | 27.5 | 29.3 | 18.00 | 3.25/3.42 | - | 34.2/7772 | 1.65 |
| 80SLR INOX | 25.40 | 15.88 | 15.75 | 7.92 | 32.7 | 35.0 | 24.00 | 3.25 | - | 56.7/12886 | 2.60 |
| 08SLR2 INOX | 12.70 | 8.51 | 7.75 | 4.45 | 31.2 | 32.2 | 11.80 | 1.6 | 13.92 | 32.0/7273 | 1.34 |
| 10BSLR2 INOX | 15.875 | 10.16 | 9.65 | 5.08 | 36.1 | 37.5 | 14.70 | 1.7 | 16.59 | 44.5/10114 | 1.84 |
| 12BSLR2 INOX | 19.05 | 12.07 | 11.68 | 5.72 | 42.0 | 43.6 | 16.00 | 1.85 | 19.46 | 57.8/13136 | 2.31 |
| 16BSLR2 INOX | 25.40 | 15.88 | 17.02 | 8.28 | 68.0 | 69.3 | 21.00 | 4.15/3.10 | 31.88 | 106.0/24091 | 5.42 |
| 40SLR2 INOX | 12.70 | 7.95 | 7.85 | 3.96 | 31.0 | 32.2 | 12.00 | 1.5 | 14.38 | 28.2/6409 | 1.12 |
| 50SLR2 INOX | 15.875 | 10.16 | 9.40 | 5.08 | 38.9 | 40.4 | 15.09 | 2.03 | 18.11 | 44.4/10091 | 2.00 |
| 60SLR2 INOX | 19.05 | 11.91 | 12.57 | 5.94 | 50.3 | 52.1 | 18.00 | 3.25/3.42 | 22.78 | 68.4/15544 | 3.21 |
| 80SLR2 INOX | 25.40 | 15.88 | 15.75 | 7.92 | 62.7 | 64.3 | 24.00 | 3.25 | 29.29 | 113.4/25773 | 5.15 |

Catene in acciaio inossidabile **AISI 304 / AISI 304 stainless steel chains**

Le catene in acciaio inossidabile sono adatte ad applicazioni che richiedono elevata resistenza termica (da -20°C a +400° C), resistenza alla corrosione e pulizia. Possono essere dotate di attacchi a seconda dell'applicazione

Stainless steel chains are suitable for applications that require high temperature resistance (-20° C +400° C), corrosion resistance and cleanliness. They can also be equipped with attachments for conveyor purpose.



Catena a rulli singola / *Single strand roller Chain*

| Catena Chain | Passo Pitch | Diam. Rullo Roller diameter | Larghezza interna Width between inner plates | Diametro Perno Pin diameter | Largh. catena ribadita Riveted chain width | | Altezza piastra Plate depth | Spessore piastra Plate thickness | Carico di rottura min. Ultimate tensile strength | Peso al metro Weight per meter |
|-------------------|----------------|--------------------------------|-------------------------------------------------|--------------------------------|-----------------------------------------------|--------|--------------------------------|-------------------------------------|-----------------------------------------------------|-----------------------------------|
| | P | d ₁ max | b ₁ min | d ₂ max | L max | Lc max | h ₂ max | t/T | Q min | q ≈ |
| | mm | mm | mm | mm | mm | mm | mm | mm | kN | kg/m |
| *25A1 INOX | 6.350 | 3.30 | 3.18 | 2.31 | 7.90 | 8.40 | 6.00 | 0.80 | 2.50 | 0.15 |
| *35A1 INOX | 9.525 | 5.08 | 4.77 | 3.58 | 12.40 | 13.17 | 9.00 | 1.30 | 5.50 | 0.33 |
| 40A1 INOX | 12.70 | 7.95 | 7.85 | 3.96 | 16.60 | 17.80 | 12.20 | 1.50 | 9.70 | 0.63 |
| 41A1 INOX | 12.70 | 7.77 | 6.25 | 3.58 | 13.75 | 15.00 | 9.910 | 1.30 | 6.00 | 0.46 |
| 50A1 INOX | 15.875 | 10.16 | 9.40 | 5.08 | 20.70 | 22.20 | 15.09 | 2.06 | 15.3 | 1.03 |
| 60A1 INOX | 19.05 | 11.91 | 12.57 | 5.94 | 25.90 | 27.70 | 18.00 | 2.44 | 21.8 | 1.51 |
| 80A1 INOX | 25.40 | 15.88 | 15.75 | 7.92 | 32.70 | 35.00 | 24.00 | 3.26 | 38.9 | 2.60 |
| 100A1 INOX | 31.75 | 19.05 | 18.90 | 9.53 | 40.40 | 44.70 | 30.00 | 4.00 | 59.0 | 3.94 |
| 120A1 INOX | 38.10 | 22.23 | 25.22 | 11.10 | 50.30 | 54.30 | 35.70 | 4.80 | 72.5 | 5.72 |
| 140A1 INOX | 44.45 | 25.40 | 25.22 | 12.70 | 54.40 | 59.00 | 41.00 | 5.60 | 94.0 | 7.70 |

Catena a Bussole: d1 indica il diametro esterno della bussola / *Bushing: d1 the table indicates the external diameter of the bushing*

Su richiesta, disponibili catene in acciaio inox AISI 316 / *Under request, stainless steel AISI 316 chains available*

Catena a Piastre diritte: per le dimensioni delle catene a passo lungo in acciaio inox, vedere le catene standard; per le dimensioni delle catene doppie e triple in acciaio inox vedere le catene standard.

Straight side plates chains: for the dimensions of double pitch stainless steel chains refer to standard chains; for the dimensions of double strand & triple strand stainless steel chains refer to standard chains.

Catene a rulli in acciaio inossidabile AISI 304 / AISI 304 stainless steel roller chains
Catena a rulli singola - DIN 8187 AISI 304 / Single strand roller chain - DIN 8187 AISI 304

| Catena Chain | Passo Pitch | Diam. Rullo Roller diameter | Larghezza interna Width between inner plates | Diametro Perno Pin diameter | Largh. catena ribadita Riveted chain width | | Altezza piastra Plate depth | Spessore piastra Plate thickness | Carico di rottura min. Ultimate tensile strength | Peso al metro Weight per meter |
|------------------|----------------|--------------------------------|-------------------------------------------------|--------------------------------|-----------------------------------------------|--------|--------------------------------|-------------------------------------|-----------------------------------------------------|-----------------------------------|
| | P | d ₁ max | b ₁ min | d ₂ max | L max | Lc max | h ₂ max | t/T | Q min | q ≈ |
| | mm | mm | mm | mm | mm | mm | mm | mm | kN | kg/m |
| 04B1 INOX | 6.00 | 4.00 | 2.80 | 1.85 | 6.80 | 7.80 | 5.00 | 0.60 | 2.00 | 0.11 |
| 05B1 INOX | 8.00 | 5.00 | 3.00 | 2.31 | 8.20 | 8.90 | 7.10 | 0.80 | 3.50 | 0.20 |
| 06B1 INOX | 9.525 | 6.35 | 5.72 | 3.28 | 13.15 | 14.10 | 8.20 | 1.30 | 6.20 | 0.41 |
| 08B1 INOX | 12.70 | 8.51 | 7.75 | 4.45 | 16.70 | 18.20 | 11.80 | 1.60 | 12.0 | 0.70 |
| 10B1 INOX | 15.875 | 10.16 | 9.65 | 5.08 | 19.50 | 20.90 | 14.70 | 1.70 | 14.5 | 0.94 |
| 12B1 INOX | 19.05 | 12.07 | 11.68 | 5.72 | 22.50 | 24.20 | 16.00 | 1.85 | 18.5 | 1.16 |
| 16B1 INOX | 25.40 | 15.88 | 17.02 | 8.28 | 36.10 | 37.40 | 21.00 | 4.15/3.10 | 40.0 | 2.13 |
| 20B1 INOX | 31.75 | 19.05 | 19.56 | 10.19 | 41.30 | 45.00 | 26.40 | 4.5/3.5 | 59.0 | 3.73 |
| 24B1 INOX | 38.10 | 25.40 | 25.40 | 14.63 | 53.40 | 57.80 | 33.20 | 6.0/4.8 | 104.0 | 7.20 |
| 32B1 INOX | 50.80 | 29.21 | 30.99 | 17.81 | 66.00 | 71.00 | 42.00 | 7.0/6.0 | 150.0 | 10.22 |

Catene a Bussole: d1 indica il diametro esterno della bussola / Bushing: d1 the table indicates the external diameter of the bushing

Catene a Piastre diritte: per le dimensioni delle catene a passo lungo in acciaio inox, vedere le catene standard; per le dimensioni delle catene doppie e triple in acciaio inox vedere le catene standard.

Straight side plates chains: for the dimensions of double pitch stainless steel chains refer to standard chains; for the dimensions of double strand & triple strand stainless steel chains refer to standard chains.

Su richiesta, disponibili catene in acciaio inox AISI 316 / Under request, stainless steel AISI 316 chains available

Catena a rulli doppia - DIN 8187 AISI 304 / Double strand roller Chain - DIN 8187 AISI 304

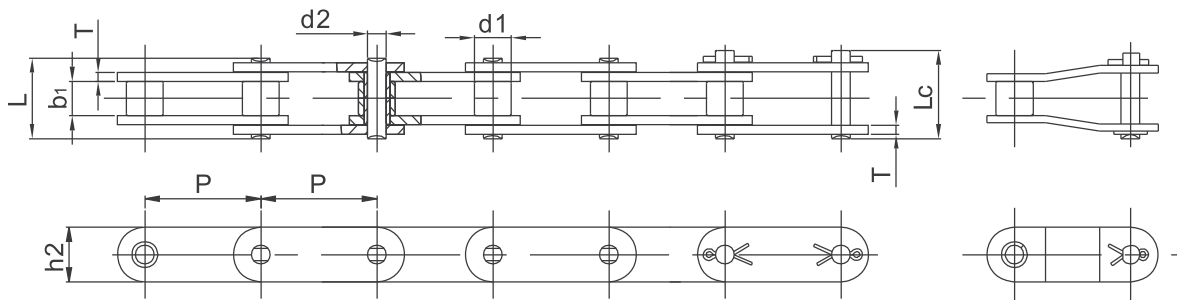
| Catena Chain | p | | b ₁ mm min | d ₂ mm | d ₁ min max | a2 mm max | g min max | e mm | FB mm N | q kg/m ≈ |
|------------------|--------|------|-----------------------|-------------------|------------------------|-----------|-----------|-------|---------|----------|
| | mm | inch | | | | | | | | |
| 06B2 INOX | 9,525 | 3/8" | 5,72 | 3,28 | 6,35 | 23,8 | 8,26 | 10,24 | 10.000 | 0,78 |
| 08B2 INOX | 12,70 | 1/2" | 7,75 | 4,45 | 8,51 | 21,0 | 11,81 | 13,92 | 20.000 | 1,35 |
| 10B2 INOX | 15,875 | 5/8" | 9,65 | 5,08 | 10,16 | 36,2 | 14,73 | 16,59 | 24.000 | 1,85 |
| 12B2 INOX | 19,05 | 3/4" | 11,68 | 5,72 | 12,07 | 42,2 | 16,13 | 19,46 | 31.000 | 2,50 |
| 16B2 INOX | 24,40 | 1" | 17,02 | 8,28 | 15,88 | 68,0 | 21,08 | 31,88 | 68.000 | 5,40 |

Catena a rulli tripla - DIN 8187 AISI 304 / Triple strand roller Chain - DIN 8187 AISI 304

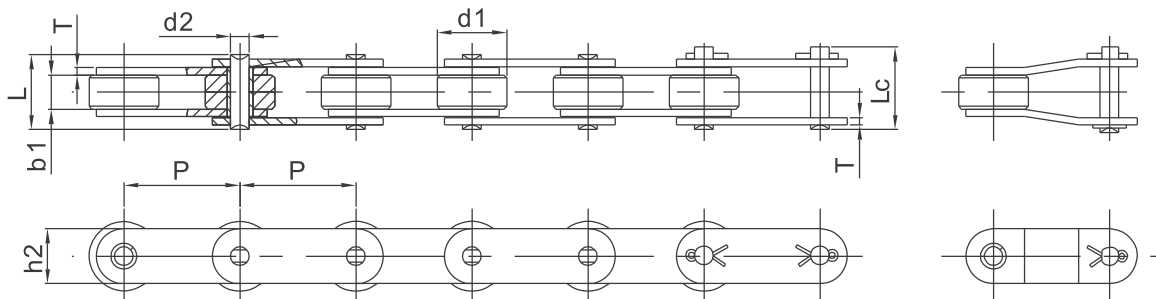
| Catena Chain | p | | b ₁ mm min | d ₂ mm | d ₁ min max | a2 mm max | g min max | e mm | FB mm N | q kg/m ≈ |
|------------------|--------|------|-----------------------|-------------------|------------------------|-----------|-----------|-------|---------|----------|
| | mm | inch | | | | | | | | |
| 06B3 INOX | 9,525 | 3/8" | 5,72 | 3,28 | 6,35 | 34,0 | 8,26 | 10,24 | 14.000 | 1,2 |
| 08B3 INOX | 12,70 | 1/2" | 7,75 | 4,45 | 8,51 | 44,9 | 11,81 | 13,92 | 30.000 | 2,0 |
| 10B3 INOX | 15,875 | 5/8" | 9,65 | 5,08 | 10,16 | 52,8 | 14,73 | 16,59 | 38.000 | 2,8 |
| 12B3 INOX | 19,05 | 3/4" | 11,68 | 5,72 | 12,07 | 61,7 | 16,13 | 19,46 | 52.000 | 3,8 |
| 16B3 INOX | 24,40 | 1" | 17,02 | 8,28 | 15,88 | 99,9 | 21,08 | 31,88 | 99.000 | 8,0 |

Catene da trasporto a passo lungo in **acciaio inossidabile** / *Double pitch stainless steel conveyor chains*

Rullo Standard / *Small Roller type*

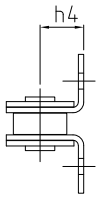
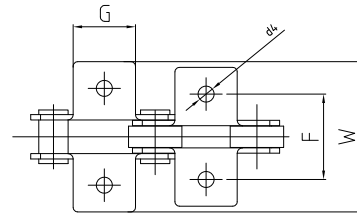
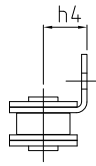
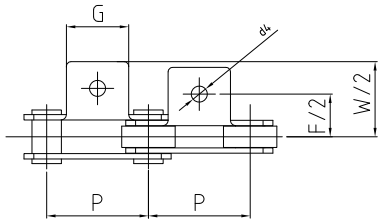
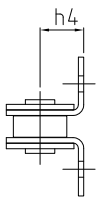
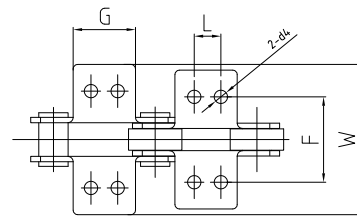
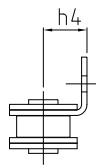
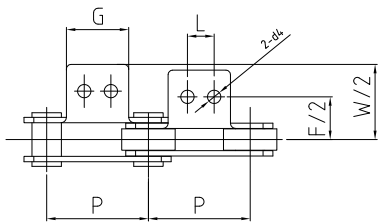


Rullo Maggiorato / *Large Roller type*



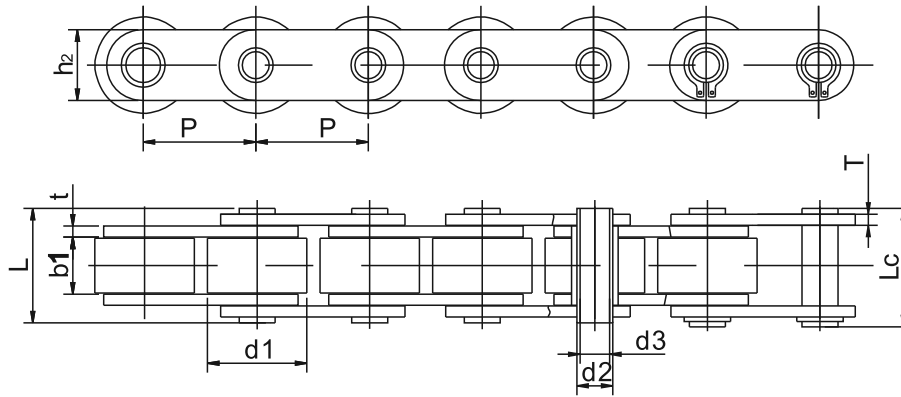
| Catena Chain | Passo Pitch | Diam. Rullo Roller diameter | Larghezza interna Width between inner plates | Diametro Perno Pin diameter | Largh. catena ribadita Riveted chain width | | Altezza piastra Plate depth | Spessore piastra Plate thickness | Carico di rottura min. Ultimate tensile strength | Peso al metro Weight per meter |
|-----------------|----------------|-----------------------------------|----------------------------------------------------------|-----------------------------------|--------------------------------------------------------|-----------|--------------------------------------|-------------------------------------------|-----------------------------------------------------------------|-----------------------------------------|
| | P | d ₁ max | b ₁ min | d ₂ max | L max | Lc max | h ₂ max | T | Q min | q ≈ |
| | mm | mm | mm | mm | mm | mm | mm | mm | kN | kg/m |
| C2040 INOX | 25.40 | 7.95 | 7.85 | 3.96 | 16.6 | 17.8 | 12.0 | 1.50 | 9.6 | 0.51 |
| C2042 INOX | | 15.88 | | | | | | | | 0.85 |
| C2040H INOX | 25.40 | 7.95 | 7.85 | 3.96 | 18.8 | 19.9 | 12.0 | 2.03 | 9.6 | 0.66 |
| C208B INOX | 25.40 | 8.51 | 7.75 | 4.45 | 16.7 | 18.2 | 11.8 | 1.60 | 12.0 | 0.56 |
| C208BL INOX | | 15.88 | | | | | | | | 0.90 |
| C2050 INOX | 31.75 | 10.16 | 9.40 | 5.08 | 20.7 | 22.2 | 15.0 | 2.03 | 15.2 | 0.79 |
| C2052 INOX | | 19.05 | | | | | | | | 1.29 |
| C2060 INOX | 38.10 | 11.91 | 12.57 | 5.94 | 25.9 | 27.7 | 18.0 | 2.42 | 21.7 | 1.13 |
| C2062 INOX | | 22.23 | | | | | | | | 1.63 |
| C2060H INOX | 38.10 | 11.91 | 12.57 | 5.94 | 29.2 | 31.6 | 18.0 | 3.25 | 21.7 | 1.46 |
| C2062H INOX | | 22.23 | | | | | | | | 3.10 |
| C2080 INOX | 50.80 | 15.88 | 15.75 | 7.92 | 32.7 | 36.5 | 24.0 | 3.25 | 38.9 | 2.11 |
| C2082 INOX | | 28.58 | | | | | | | | 3.16 |
| C2080H INOX | 50.80 | 15.88 | 15.75 | 7.92 | 36.2 | 39.4 | 24.0 | 4.0 | 38.9 | 2.57 |
| C2082H INOX | | 28.58 | | | | | | | | 3.63 |
| C2100 INOX | 63.50 | 19.05 | 18.90 | 9.53 | 40.4 | 44.7 | 30.0 | 4.0 | 60.0 | 3.05 |
| C2102 INOX | | 39.67 | | | | | | | | 4.89 |
| C2100H INOX | 63.50 | 19.05 | 18.90 | 9.53 | 43.6 | 46.9 | 30.0 | 4.8 | 60.0 | 3.61 |
| C2102H INOX | | 39.67 | | | | | | | | 5.45 |

Catene da trasporto a passo lungo in **acciaio inossidabile con attacchi** / **Double-Pitch stainless steel conveyor chains with attachments**


A-2
K-2


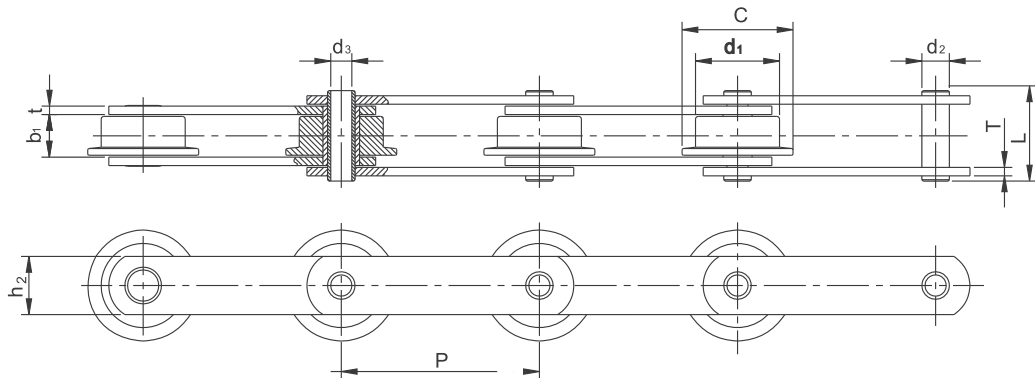
| Catena Chain | P | G | L | F | W | h4 | d4 |
|--------------------|-------|------|------|------|-------|------|-----|
| | mm | mm | mm | mm | mm | mm | mm |
| C2040 INOX | 25.40 | 19.1 | 9.5 | 25.4 | 39.6 | 9.1 | 3.4 |
| C2042 INOX | | | | | | | |
| C208B INOX | 25.40 | 23.2 | 12.7 | 25.4 | 39.6 | 9.1 | 4.5 |
| C208BL INOX | | | | | | | |
| C2050 INOX | 31.75 | 23.8 | 11.9 | 31.8 | 49.0 | 11.1 | 5.5 |
| C2052 INOX | | | | | | | |
| C2060 INOX | 38.10 | 28.6 | 14.3 | 42.9 | 67.8 | 14.7 | 5.5 |
| C2062 INOX | | | | | | | |
| C2060H INOX | 38.10 | 28.6 | 14.3 | 42.9 | 67.8 | 14.7 | 5.5 |
| C2062H INOX | | | | | | | |
| C2080 INOX | 50.80 | 38.1 | 19.1 | 55.6 | 87.8 | 19.1 | 6.8 |
| C2082 INOX | | | | | | | |
| C2080H INOX | 50.80 | 38.1 | 19.1 | 55.6 | 87.8 | 19.1 | 6.8 |
| C2082H INOX | | | | | | | |
| C2100 INOX | 63.50 | 47.6 | 23.8 | 66.6 | 107.5 | 23.4 | 9.5 |
| C2102 INOX | | | | | | | |
| C2100H INOX | 63.50 | 47.6 | 23.8 | 66.6 | 107.5 | 23.4 | 9.2 |
| C2102H INOX | | | | | | | |

Catena da trasporto a passo lungo, **perni forati in acciaio inossidabile** / *Double-Pitch stainless steel hollow pins chains*

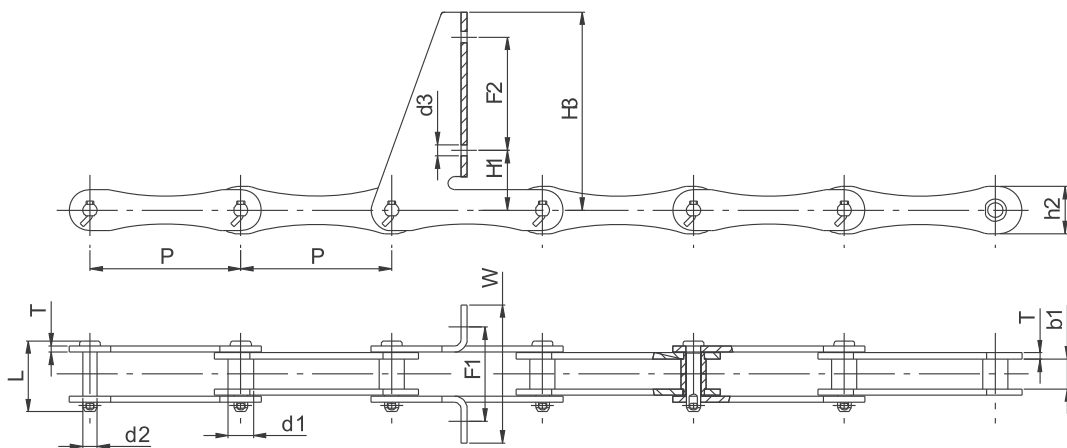


| Catena Chain | Passo Pitch | Diam. Rullo Roller diameter | Larghezza interna Width between inner plates | Diametro Perno Pin diameter | | Largh. catena ribadita Riveted chain width | | Altezza piastra Plate depth | Spessore piastra Plate thickness | Carico di rottura min. Ultimate tensile strength | Peso al metro Weight per meter |
|------------------------|----------------|--------------------------------|-------------------------------------------------|--------------------------------|--------------------|-----------------------------------------------|--------|--------------------------------|-------------------------------------|-----------------------------------------------------|-----------------------------------|
| | P | d ₁ max | b ₁ min | d ₂ max | d ₃ max | L max | Lc max | h ₂ max | t/T | Q min | q ≈ |
| | mm | mm | mm | mm | mm | mm | mm | mm | mm | kN | kg/m |
| C2042HP INOX | 25.40 | 15.88 | 7.85 | 5.63 | 4.00 | 16.5 | 17.6 | 12.0 | 1.50 | 7.70 | 0.79 |
| C2052HP INOX | 31.75 | 19.05 | 9.53 | 7.22 | 5.12 | 20.5 | 21.8 | 15.0 | 2.03 | 14.3 | 1.27 |
| C2062HP INOX | 38.10 | 22.23 | 12.70 | 8.31 | 6.00 | 25.8 | 26.8 | 17.0 | 2.42 | 16.8 | 1.74 |
| C2082HP INOX | 50.80 | 28.58 | 15.75 | 11.40 | 8.05 | 32.4 | 33.8 | 24.0 | 3.25 | 35.0 | 2.86 |
| C2042HHP INOX | 25.40 | 15.88 | 7.85 | 5.63 | 4.00 | 18.8 | 19.9 | 12.0 | 2.03 | 7.70 | 0.96 |
| C2052HHP INOX | 31.75 | 19.05 | 9.53 | 7.22 | 5.12 | 22.1 | 23.4 | 15.0 | 2.42 | 14.3 | 1.46 |
| C2062HHP INOX | 38.10 | 22.23 | 12.70 | 8.31 | 6.00 | 29.2 | 30.2 | 17.0 | 3.25 | 16.8 | 2.02 |
| C2082HHP INOX | 50.80 | 28.58 | 15.75 | 11.40 | 8.05 | 36.2 | 37.6 | 24.0 | 4.00 | 35.0 | 3.30 |
| *P200HBa INOX F | 200.0 | 90.00 | 32.98 | 43.00 | 35.20 | - | 59.0 | 64.0 | 4.00 | 30.0 | 9.40 |

* Nota: Rullo flangiato / Note: Flanged roller

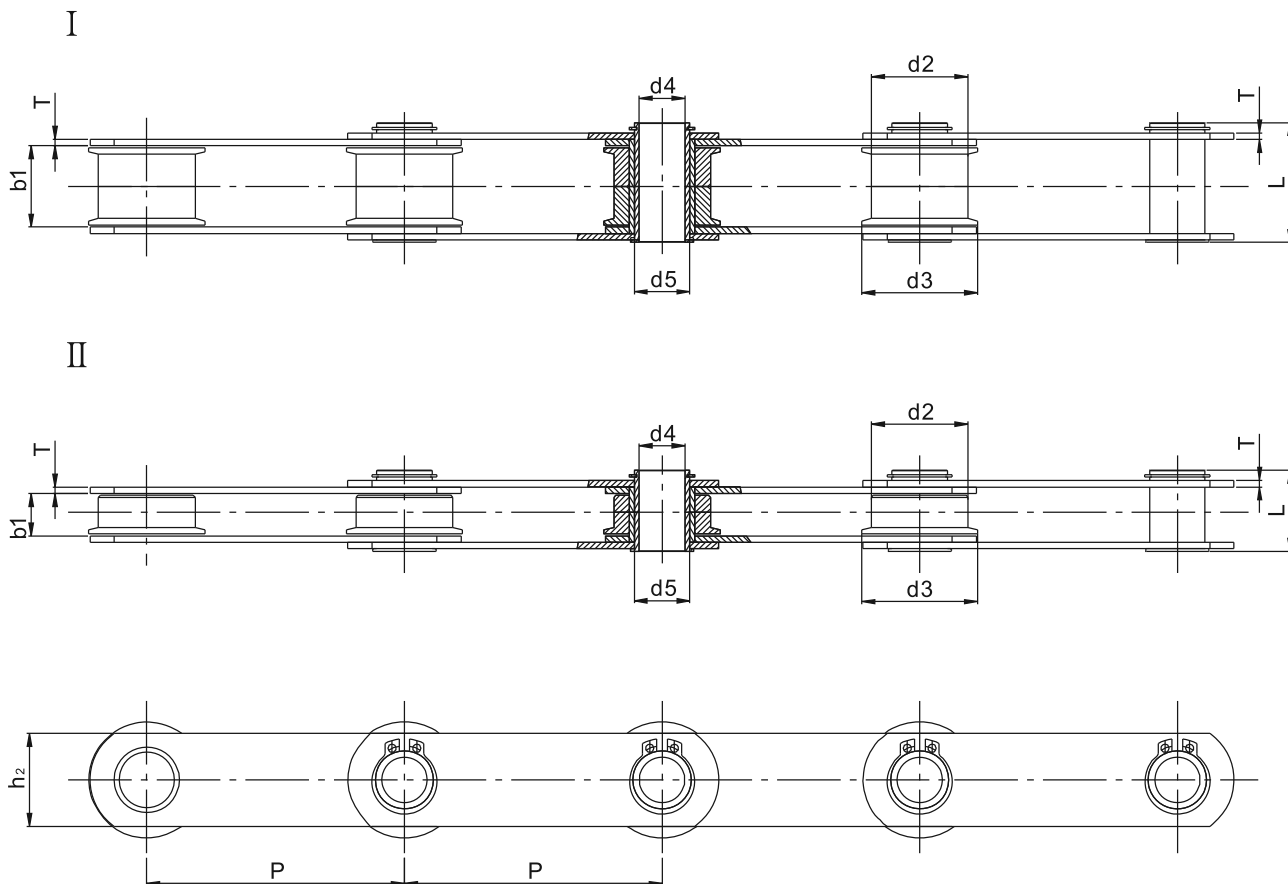
Catene per trasporto rifiuti in acciaio inossidabile / Sewage disposal chains-715 stainless steel chains


| Catena Chain | Passo Pitch | Larghezza interna Width between inner plates | Diam. Rullo Roller diameter | | Diametro Perno Pin diameter | | Largh. catena ribadita Riveted chain width | Dimensioni piastre Plates dimensions | | | Carico di rottura min. Ultimate tensile strength | Carico di rottura medio Average tensile strength | Peso al metro Weight per meter |
|------------------|----------------|-------------------------------------------------------------|--------------------------------------|----------|--------------------------------------|-----------------------|-----------------------------------------------------------|-----------------------------------------------|----------|----------|-----------------------------------------------------------------|-----------------------------------------------------------------|--------------------------------------------|
| | P | b ₁ min | d ₁ max | C max | d ₂ max | d ₃ max | L max | h ₂ max | T max | t max | Q min | Q ₀ | q ≈ |
| | mm | mm | mm | mm | mm | mm | mm | | | | kN | kN | kg/m |
| W152 INOX | 152.4 | 25.40 | 66.7 | 85.7 | 27.1 | 20.0 | 58.8 | 50.0 | 5.0 | 7.0 | 110.0 | 122.1 | 10.50 |

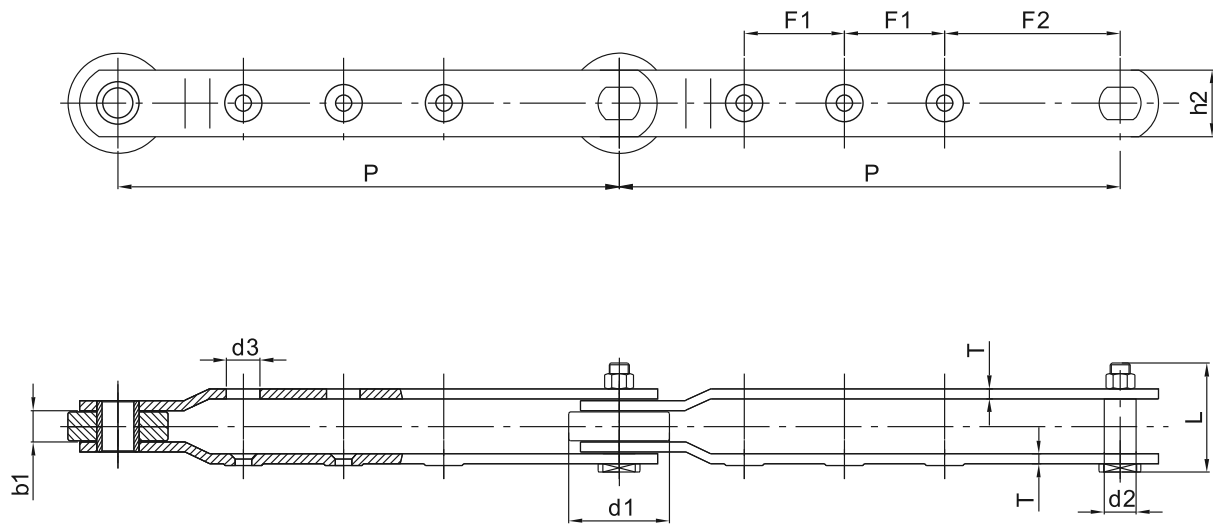


| Catena Chain | Passo Pitch | Diametro bussola Bush Dimensions | Larghezza interna Width between inner plates | Altezza piastra Plate depth | Diametro Perno Pin diameter | Largh. catena ribadita Riveted chain width | Dimensioni piastre e attacchi Plates and attachments dimensions | | | | | | Spessore piastra Plate thickness | Carico di rottura min. Ultimate tensile strength |
|------------------------------|----------------|-------------------------------------------|-------------------------------------------------------------|--------------------------------------|--------------------------------------|-----------------------------------------------------------|--------------------------------------------------------------------------|-------|----------------|----------------|----------------|----------------|-------------------------------------------|-----------------------------------------------------------------|
| | P | d ₁ max | b ₁ min | h ₂ | d ₂ max | L max | d ₃ | W | F ₁ | H ₃ | H ₁ | F ₂ | T | Q min |
| | mm | mm | mm | mm | mm | mm | mm | mm | mm | mm | mm | mm | mm | kN |
| 7155S-F228-10LK2 INOX | 152.4 | 25.4 | 30.23 | 47.75 | 14.22 | 71.75 | 11.18 | 139.7 | 95.25 | 200.15 | 60.45 | 114.3 | 6.35 | 146.8 |
| 7155S-F226-10LK2 INOX | 152.4 | 25.4 | 30.23 | 47.75 | 14.22 | 71.63 | 11.18 | 139.7 | 95.25 | 157.7 | 60.45 | 66.8 | 6.35 | 146.8 |

Catene in **acciaio inossidabile** con **trattamento anticorrosivo** / *Anticorrosive treatment stainless steel chains*

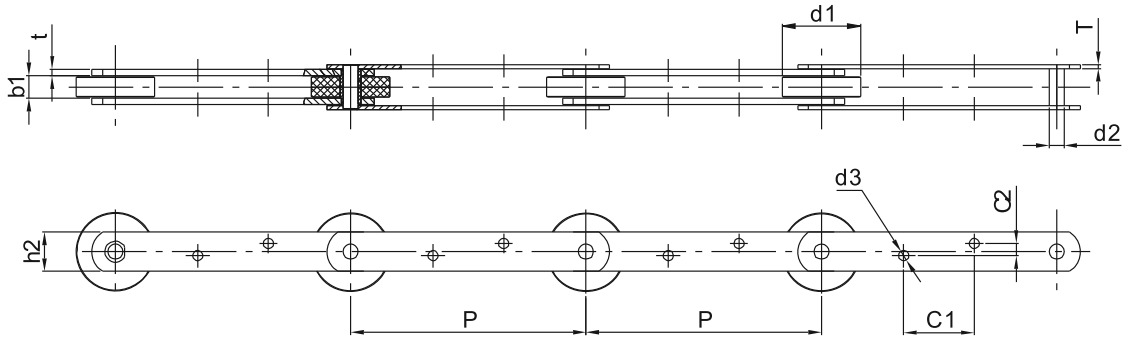


| Catena Chain | Passo <i>Pitch</i> | Larghezza interna <i>Width between inner plates</i> | Diam. Rullo <i>Roller diameter</i> | | Diametro Perno <i>Pin diameter</i> | | Largh. catena ribadita <i>Riveted chain width</i> | Altezza piastre <i>Inner plates depth</i> | Spessore piastra <i>Plate thickness</i> | Carico di rottura min. <i>Ultimate tensile strength</i> | Tipo Type |
|-------------------------------|-----------------------|-------------------------------------------------------------------|----------------------------------------------|-----------------------|----------------------------------------------|----------------|----------------------------------------------------------------|-----------------------------------------------------|---------------------------------------------------|--------------------------------------------------------------------------|--------------|
| | P | b ₁ min | d ₂ max | d ₃ max | d ₄ max | d ₅ | L max | h ₂ max | Q min | Q min | |
| | mm | mm | mm | mm | mm | mm | mm | mm | mm | kN | |
| P200HBSPF <small>INOX</small> | 200 | 62.98 | 75 | 90 | 35.2 | 43 | 93.1 | 72 | 5 | 30 | I |
| P200HBaF <small>INOX</small> | 200 | 33 | 75 | 90 | 35.2 | 43 | 59 | 64 | 4 | 30 | II |
| P200HBbF <small>INOX</small> | 200 | 33 | 75 | 90 | 35.5 | 43 | 63.14 | 72 | 5 | 30 | II |

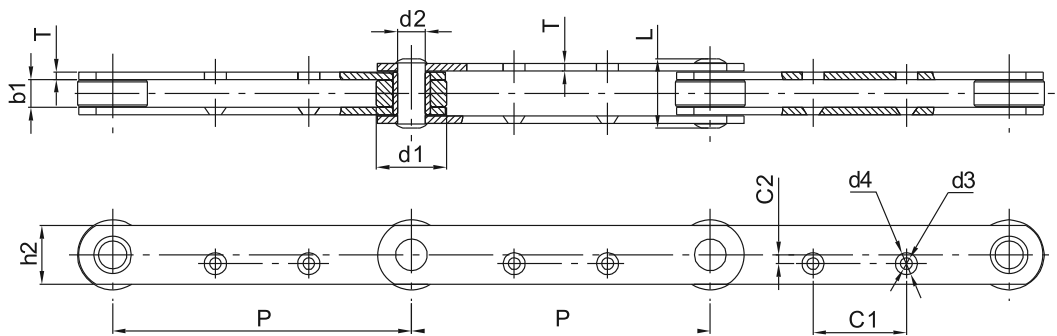
Catene in acciaio inossidabile con trattamento anticorrosivo / Anticorrosive treatment stainless steel chains


| Catena Chain | Passo Pitch | Larghezza interna Width between inner plates | Diam. Rullo Roller diameter | Diametro Perno Pin diameter | Largh. catena ribadita Riveted chain width | Dimensioni piastre Plates dimensions | | | | | Carico di rottura min. Ultimate tensile strength |
|-------------------------------------------|----------------|----------------------------------------------------------|--------------------------------------|--------------------------------------|--------------------------------------------------------|-----------------------------------------------|----|----------------|----------------|----------------|-----------------------------------------------------------------|
| | P | b ₁ min | d ₁ max | d ₂ max | L max | h ₂ max | T | d ₃ | F ₁ | F ₂ | Q min |
| | mm | mm | mm | mm | mm | mm | mm | mm | mm | mm | kN |
| P300(W)-1LGK-3 <small>INOX</small> | 300.0 | 19 | 60 | 19.05 | 65.8 | 40 | 6 | 20 | 60 | 105 | 64 |

Catene in **acciaio inossidabile con trattamento anticorrosivo** / *Anticorrosive treatment stainless steel chains*



| Catena Chain | Passo Pitch | Larghezza interna Width between inner plates | Diam. Rullo Roller diameter | Diametro Perno Pin diameter | Dimensioni piastre Plates dimensions | | | | | | Carico di rottura min. Ultimate tensile strength |
|------------------------|----------------|-------------------------------------------------------------|--------------------------------------|--------------------------------------|-----------------------------------------------|----|----|----------------|----------------|----------------|--------------------------------------------------------------|
| | P | b ₁ min | d ₁ max | d ₂ max | h ₂ max | T | t | d ₃ | C ₁ | C ₂ | Q min |
| | mm | mm | mm | mm | mm | mm | mm | mm | mm | mm | kN |
| P300-LGL-2 INOX | 300.0 | 29 | 100 | 19.05 | 50 | 5 | 8 | 13 | 90 | 15.5 | 78.8 |



| Catena Chain | Passo Pitch | Larghezza interna Width between inner plates | Diam. Rullo Roller diameter | Diametro Perno Pin diameter | Largh. catena ribadita Riveted chain width | Dimensioni piastre Plates dimensions | | | | | | Carico di rottura min. Ultimate tensile strength |
|---------------------------|----------------|-------------------------------------------------------------|--------------------------------------|--------------------------------------|-----------------------------------------------------------|-----------------------------------------------|----|----------------|----------------|----------------|----------------|--------------------------------------------------------------|
| | P | b ₁ min | d ₁ max | d ₂ max | L max | h ₂ max | T | D ₃ | D ₄ | C ₁ | C ₂ | Q min |
| | mm | mm | mm | mm | mm | mm | mm | mm | mm | mm | mm | kN |
| P203.2-1LGK-2 INOX | 203.2 | 19.05 | 47.6 | 19.05 | 47.5 | 40 | 5 | 8.3 | 15 | 63.5 | 6 | 66.74 |

