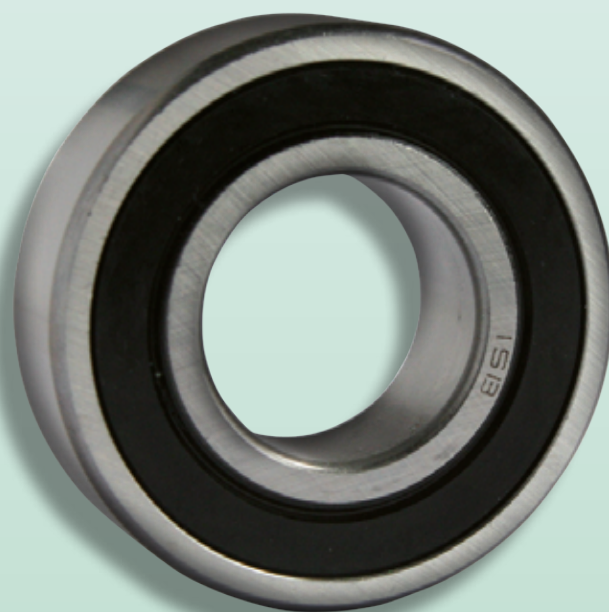




Cuscinetti orientabili a rulli

Self-aligning roller bearings



CUSCINETTI ORIENTABILI A RULLI

I cuscinetti ISB orientabili a rulli hanno due corone di rulli che ruotano in un'unica pista di forma sferica ricavata nell'anello esterno (**Fig. 1**).

Le corrispondenti due piste dell'anello interno sono inclinate rispetto all'asse del cuscinetto.

Sono orientabili ed insensibili ai disassamenti di modesta entità dell'albero rispetto all'alloggiamento o all'inflessione dello stesso.

Sopportano carichi radiali e assiali in entrambi i sensi.

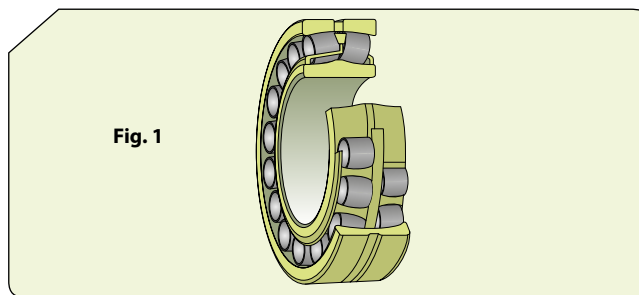
SPHERICAL ROLLER BEARINGS

ISB spherical roller bearings have two rows of rollers that rotate in a single spherical track, obtained in the outer ring (**Fig. 1**).

The corresponding two raceways of the inner ring are inclined with respect to the bearing axis.

They are orientable and insensitive to moderate misalignments of the shaft with respect to the housing or its deflection.

They can bear radial and axial loads in both directions.



Cuscinetti Standard

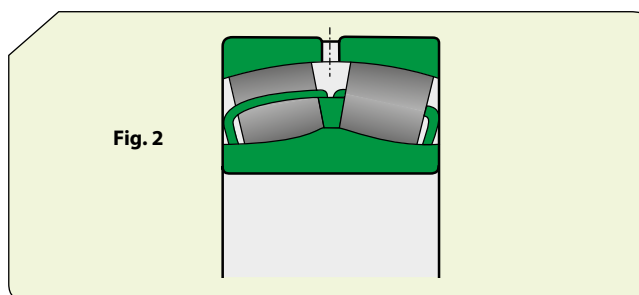
Per cuscinetti orientabili a rulli si intende:

- Cuscinetti aperti: a seconda di dimensioni e serie sono prodotti in diverse esecuzioni, disponibili con foro conico o cilindrico. Il foro conico ha una conicità o di 1:30 (serie 240,241,248 e 249, appellativo nel suffisso K30) o di 1:12 con K come suffisso nell'appellativo. Una scanalatura circonferenziale e tre fori di lubrificazione sull'anello esterno facilitano la lubrificazione del cuscinetto (**Fig.2**).

Standard bearings

Spherical roller bearings mean:

- *Open bearings: depending on size and series, they are produced in different executions, available with tapered or cylindrical bore. The tapered bore has a taper of either 1:30 (series 240,241,248 and 249, appellative in the suffix K30) or 1:12 with K as a suffix in the appellation. A circumferential groove and three lubrication holes on the outer ring facilitate bearing lubrication (Fig.2).*



- Cuscinetti con tenute incorporate: le tenute sono rinforzate con lamierino d'acciaio e sono di gomma nitrilica (NBR), lubrificati con grasso per altissime pressioni, non devono essere portati a temperature superiori agli 80°C e non vanno lavati.
- Cuscinetti per applicazioni vibranti: le applicazioni vibranti, come vagli o eccitatori, sottopongono i cuscinetti a maggiori sollecitazioni rispetto ai cuscinetti standard.

- *Bearings with incorporated seals: the seals are reinforced with sheet steel and are made of rubber nitrile (NBR), lubricated with grease for very high pressures, must not be brought to temperatures above 80 °C and should not be washed.*
- *Bearings for Vibratory Applications: Vibratory applications, such as screens or exciters, place bearings under greater stress than standard bearings.*

Cuscinetti su bussole

I cuscinetti ISB orientabili a rulli con foro conico possono essere montati su alberi con o senza gradino utilizzando

- bussola di trazione (**Fig. 3a**);
- bussola di pressione (**Fig. 3b**).

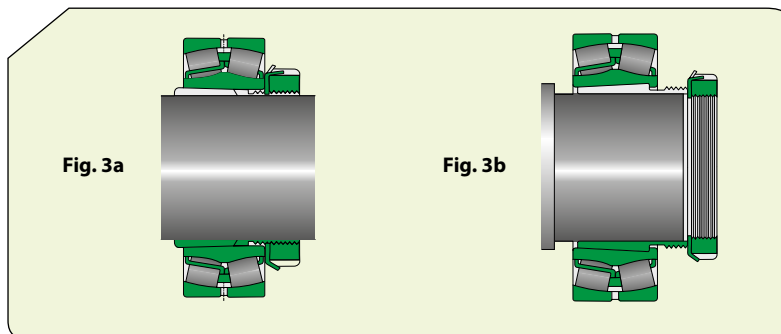
Bearings on bushings

ISB spherical roller bearings with tapered bore can be mounted on stepped or stepped shafts using

- *adapter sleeves (Fig. 3a);*
- *withdrawal sleeves (Fig. 3b).*

Queste facilitano il montaggio e smontaggio, semplificando la disposizione dei cuscinetti.

These sleeves facilitate assembly and disassembly, simplifying the arrangement of the bearings.



Dimensioni

Le dimensioni dei cuscinetti orientabili a rulli sono conformi alla ISO 15.

Le dimensioni delle bussole di trazione o pressione sono conformi alla ISO 2982-1.

Tolleranze

I cuscinetti ISB orientabili a rulli con foro conico o cilindrico vengono costruiti secondo la tolleranza normale, in conformità alla norma ISO 492.

Gioco interno

I cuscinetti ISB orientabili a rulli sono costruiti con giuoco interno radiale normale; in grande maggioranza disponibili anche con giuoco interno maggiorato C3 e ancor più maggiorato C4.

Alcuni sono forniti con giuoco interno C2 che risulta quindi minore del normale.

Verificare sempre la disponibilità dei giochi interni differenti dal normale (compreso C5, maggiore di C4) prima dell'ordine.

Disallineamento

Data la forma costruttiva, entro i limiti progettuali propri di ciascun cuscinetto, i disallineamenti angolari non influiscono sulle prestazioni in questo tipo di cuscinetto.

Capacità di carico assiale

Data la particolare struttura, i cuscinetti orientabili a rulli possono reggere carichi assiali.

Appellativi supplementari

- C2** Giuoco radiale interno inferiore a normale
- C3** Giuoco radiale interno superiore a normale
- C4** Giuoco radiale interno maggiore di C3
- C5** Giuoco interno radiale maggiore di C4
- 2RS** Tenuta strisciante in gomma nitrilica (NBR), rinforzata con lamierino d'acciaio, su entrambi i lati del cuscinetto
- K** Foro conico, conicità 1:12
- K30** Foro conico, conicità 1:30
- P5** Maggiore precisione dimensionale e di rotazione, conforme alla classe di tolleranza 5 della norma ISO
- P6** Maggiore precisione dimensionale e di rotazione, conforme alla classe di tolleranza 6 della norma ISO

Dimensions

The dimensions of the spherical roller bearings comply with ISO 15 standard.

The dimensions of the adapter or withdrawal sleeves comply with ISO 2982-1 standard.

Tolerances

ISB spherical roller bearings with tapered or cylindrical bore are manufactured to normal tolerance, in accordance with ISO 492 standard.

Internal radial clearance

ISB spherical roller bearings are built with normal radial internal clearance; in the great majority, also available with increased internal clearance C3 and even more increased C4. Some are supplied with internal clearance C2 which is therefore less than normal.

Always check the availability of internal clearances other than normal (including C5, greater than C4) before ordering.

Misalignment

Given their construction form, within the design limits of each bearing, angular misalignments do not affect performance in this type of bearing.

Axial load capacity

Given their particular structure, spherical roller bearings can withstand axial loads.

Additional suffixes

- C2** Radial internal clearance less than Normal
- C3** Radial internal clearance greater than Normal
- C4** Radial internal clearance greater than C3
- C5** Radial internal clearance greater than C4
- 2RS** Sliding seal in acrylonitrile-butadiene rubber (NBR), reinforced with steel sheet, on both sides of the bearing
- K** Tapered bore, taper 1:12
- K30** Tapered bore, taper 1:30
- P5** Greater dimensional and rotation accuracy, according to tolerance class 5 of ISO standard
- P6** Greater dimensional and rotation accuracy, according to tolerance class 6 of ISO standard

P62 P6 + C2

VA e VA405 Cuscinetti per applicazioni vibranti (layout ottimizzato e gioco C4)

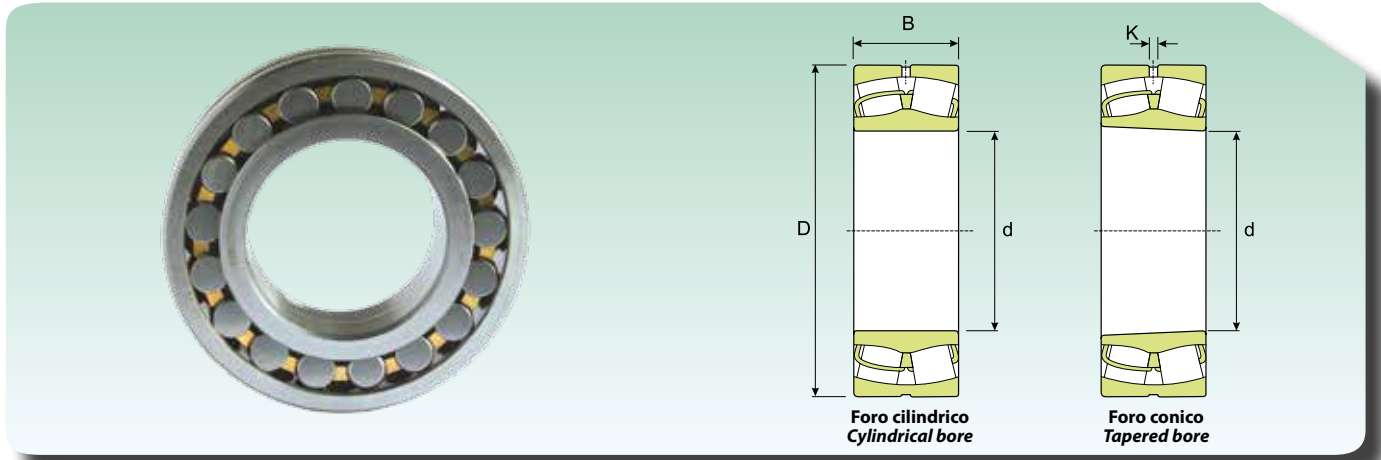
W33 Scanalatura circonferenziale e tre fori di lubrificazione sull'anello esterno

P62 P6 + C2

VA e VA405 *Bearings for vibrating applications (optimized layout and C4 clearance)*

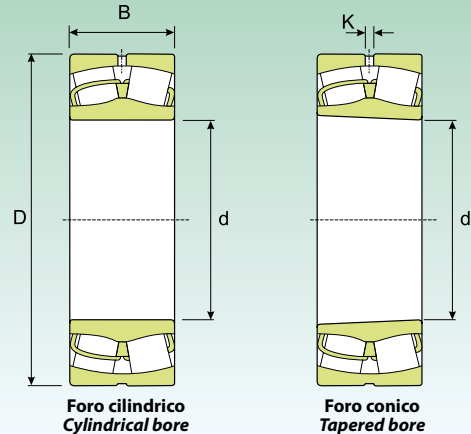
W33 *Circumferential groove and three lubrication holes on the outer ring*

CUSCINETTI ORIENTABILI A RULLI
SELF-ALIGNING ROLLER BEARINGS



Dimensioni (mm) Dimension (mm)				Coefficiente di carico (kN) Load rating (kN)		Velocità limite (giri/min) Speed limit (Rpm)		Peso (Kg) Weight (Kg)	Sigla Designation	
d (mm)	D (mm)	B (mm)	K (mm)	Dinamico Dynamic C	Statico Static C ₀	Lubrificazione Lubrication			Foro cilindrico Cylindrical bore	Foro Conico Tapered bore
						Grasso Grease	Olio Oil			
20	52	15	2	40	40	12500	16000	0.16	21304	-
	52	18	2	48	43	13005	15300	0.28	22205/20	-
25	52	18	2	49	43	13005	15300	0.26	22205	22205 K
	62	17	-	49	41	9180	10800	0.28	21305	-
30	62	20	2	65	59	7500	9500	0.29	22206	22206 K
	72	19	-	65	60	7650	9000	0.41	21306	21306 K
35	72	23	2	87.1	83	9180	10800	0.45	22207	22207 K
	80	21	-	78.8	71	4200	5400	0.55	21307	21307 K
40	80	23	3	97	90.5	8415	9900	0.53	22208	22208 K
	90	23	3	106	107	7267.5	8550	0.75	21308	21308 K
	90	33	3	152	137	4500	5600	1.05	22308	22308 K
45	85	23	3	101	97	5300	6700	0.58	22209	22209 K
	100	25	3	126	126	6502.5	7650	0.99	21309	21309 K
	100	36	3	185	179	5355	6300	1.4	22309	22309 K
50	90	23	3	105	106	7267.5	8550	0.63	22210	22210 K
	110	27	3	156	163	5737.5	6750	1.35	21310	21310 K
	110	40	3	224	220	4819.5	5670	1.9	22310	22310 K
55	100	25	3	126	126	6502.5	7650	0.84	22211	22211 K
	120	29	3	156	163	5737.5	6750	1.7	21311	21311 K
	120	43	3	275	275	4284	5040	2.45	22311	22311 K
60	110	28	3	156	163	5737.5	6750	1.15	22212	22212 K
	130	31	3	212	236	4819.5	5670	2.1	21312	21312 K
	130	46	4.5	319	328	4054.5	4770	3.1	22312	22312 K
65	100	35	2	134	170	4819.5	5670	0.95	24013	24013 K30
	120	31	3	193.6	212	5355	6300	1.55	22213	22213 K
	140	33	3	239	265	4590	5400	2.55	21313	21313 K
	140	48	4.5	349.8	353	3825	4500	3.75	22313	22313 K
70	125	31	3	209	224	5125.5	6030	1.55	22214	22214 K
	150	35	3	285	307	4284	5040	3.1	21314	21314 K
	150	51	4.5	406	421	3442.5	4050	4.55	22314	22314 K
75	115	40	3	177	227	4054.5	4770	1.55	24015	24015 K30
	130	31	3	213	235	4819.5	5670	1.7	22215	22215 K
	160	37	3	286	319	4284	5040	3.75	21315	21315 K
	160	55	4.5	454	466	3289.5	3870	5.55	22315	22315 K
80	140	33	3	238	265	4590	5400	2.1	22216	22216 K
	170	39	3	325	368	4054.5	4770	4.45	21316	21316 K
	170	58	4.5	505	530	2000	2800	6.6	22316	22316 K
85	150	36	3	285	319	4284	5040	2.65	22217	22217 K
	180	41	3	325	368	4054.5	4770	5.2	21317	21317 K
	180	60	4.5	564	608	2907	3420	7.65	22317	22317 K

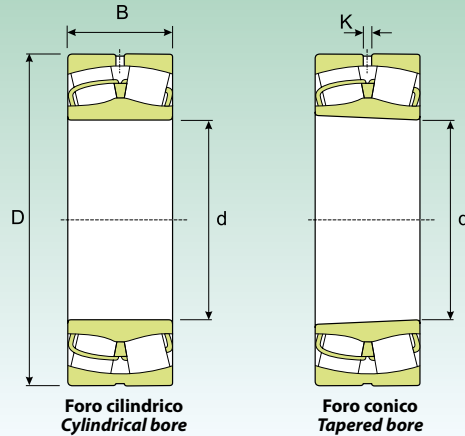
A richiesta disponibile con scanalatura circonferenziale a tre fori di lubrificazione sull'anello esterno.
Under request available with circumferential groove and three lubrication holes in outer ring.

**CUSCINETTI ORIENTABILI A RULLI
SELF-ALIGNING ROLLER BEARINGS**


Dimensioni (mm) Dimension (mm)				Coefficiente di carico (kN) Load rating (kN)		Velocità limite (giri/min) Speed limit (Rpm)		Peso (Kg) Weight (Kg)	Sigla Designation	
d (mm)	D (mm)	B (mm)	K (mm)	Dinamico Dynamic C	Statico Static C ₀	Lubrificazione Lubrication			Foro cilindrico Cylindrical bore	Foro Conico Tapered bore
						Grasso Grease	Olio Oil			
90	160	40	3	325	368	4054.5	4770	3.4	22218	22218 K
	160	52.4	3	365	431	1700	2300	4.65	23218	23218 K
	190	43	4.5	385	441	3672	4320	6.1	21318	21318 K
	190	64	6	629	683	2754	3240	9.05	22318	22318 K
95	170	43	4.5	381	441	3672	4320	4.15	22219	22219 K
	200	45	4.5	422	480	3442.5	4050	7.05	21319	21319 K
	200	67	6	689	750	2601	3060	10.5	22319	22319 K
100	150	50	3	289	407	3060	3600	3.15	24020	24020 K30
	165	52	3	378	480	3060	3600	4.55	23120	23120 K
	165	65	2	459	627	2448	2880	5.65	24120	24120 K30
	180	46	4.5	427	482	3442.5	4050	4.9	22220	22220 K
	180	60.3	4.5	487	588	2601	3060	6.85	23220	23220 K
	215	47	4.5	425	480	3442.5	4050	8.6	21320	21320 K
	215	73	6	838	931	2295	2700	13.5	22320	22320 K
110	170	45	3	319	431	3289.5	3870	3.8	23022	23022 K
	170	60	3	429	608	2754	3240	5	24022	24022 K30
	180	56	4.5	443	573	2754	3240	5.75	23122	23122 K
	180	69	3	528	735	2295	2700	7.1	24122	24122 K30
	200	53	4.5	560	628	3060	3600	7	22222	22222 K
	200	69.8	4.5	615	750	2448	2880	9.85	23222	23222 K
	240	80	7.5	970	1100	1400	1800	18.4	22322	22322 K
120	180	46	3	359	500	3060	3600	4.2	23024	23024 K
	180	60	3	447	657	1600	2000	5.45	24024	24024 K30
	200	62	4.5	524	681	2601	3060	8	23124	23124 K
	200	80	3	666	931	1989	2340	10.3	24124	24124 K30
	215	58	6	641	765	2907	3420	8.7	22224	22224 K
	215	76	4.5	721	911	2142	2520	12	23224	23224 K
	260	86	7.5	1003	1098	1989	2340	23	22324	22324 K
130	200	52	4.5	442	598	2754	3240	6	23026	23026 K
	200	69	3	558	799	2295	2700	8.05	24026	24026 K30
	210	64	4.5	574	764	2448	2880	8.8	23126	23126 K
	210	80	3	687	980	1836	2160	11	24126	24126 K30
	230	64	6	744	917	2754	3240	11	22226	22226 K
	230	80	4.5	812	1039	1989	2340	14.5	23226	23226 K
	280	93	9	1163	1294	1836	2160	29	22326	22326 K
140	210	53	4.5	475	666	2601	3060	6.55	23028	23028 K
	210	69	3	586	882	2142	2520	8.55	24028	24028 K30
	225	68	4.5	645	882	2142	2520	10.5	23128	23128 K
	225	85	4.5	787	1137	1836	2160	13.5	24128	24128 K30
	250	68	6	731	882	2448	2880	14	22228	22228 K
	250	88	6	944	1225	1200	1600	19	23228	23228 K
	300	102	9	1345	1529	1683	1980	36.5	22328	22328 K

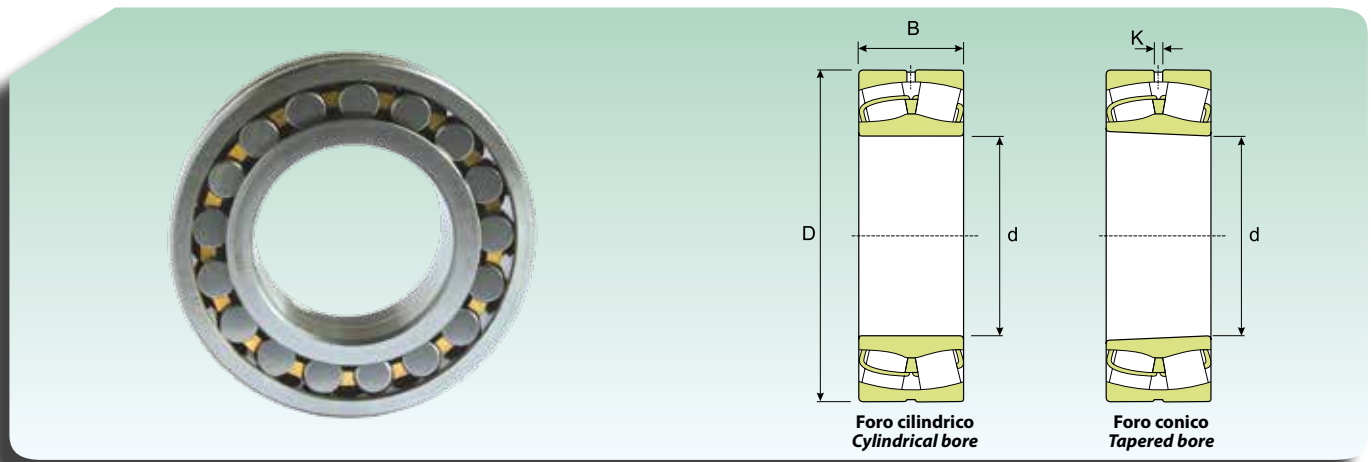
A richiesta disponibile con scanalatura circonferenziale a tre fori di lubrificazione sull'anello esterno.
Under request available with circumferential groove and three lubrication holes in outer ring.

CUSCINETTI ORIENTABILI A RULLI
SELF-ALIGNING ROLLER BEARINGS



Dimensioni (mm) Dimension (mm)				Coefficiente di carico (kN) Load rating (kN)		Velocità limite (giri/min) Speed limit (Rpm)		Peso (Kg) Weight (Kg)	Sigla Designation	
d (mm)	D (mm)	B (mm)	K (mm)	Dinamico Dynamic C	Statico Static C ₀	Lubrificazione Lubrication			Foro cilindrico Cylindrical bore	Foro Conico Tapered bore
						Grasso Grease	Olio Oil			
150	225	56	4.5	525	735	2448	2880	7.95	23030	23030 K
	225	75	3	666	1019	1989	2340	10.5	24030	24030 K30
	250	80	6	868	1176	1989	2340	16	23130	23130 K
	250	100	4.5	1039	1499	1683	1980	20	24130	24130 K30
	270	73	7.5	883	1058	2295	2700	18	22230	22230 K
	270	96	6	1115	1431	1683	1980	24.5	23230	23230 K
	320	108	9	1510	1725	1530	1800	43.5	22330	22330 K
160	240	60	6	600	862	2295	2700	9.7	23032	23032 K
	240	80	4.5	770	1176	1836	2160	13	24032	24032 K30
	270	86	7.5	1005	1343	1300	1700	20.5	23132	23132 K
	270	109	4.5	1200	1725	1453.5	1710	25	24132	24132 K30
	290	80	7.5	1030	1264	2142	2520	22.5	22232	22232 K
	290	104	7.5	1260	1627	1683	1980	31	23232	23232 K
	340	114	9	1655	1921	1453.5	1710	52	22332	22332 K
170	260	67	6	696	1039	2142	2520	13	23034	23034 K
	260	90	4.5	911	1431	1836	2160	17.5	24034	24034 K30
	280	88	7.5	1019	1470	1200	1600	22	23134	23134 K
	280	109	4.5	1196	1823	1453.5	1710	27.5	24134	24134 K30
	310	86	9	1162	1445	1989	2340	28.5	22234	22234 K
	310	110	7.5	1170	1891	1530	1800	37.5	23234	23234 K
	360	120	9	1725	2117	1377	1620	61	22334	22334 K
180	250	52	3	501	813	2142	2520	7.9	23936	23936 K
	280	74	7.5	868	1225	1989	2340	17	23036	23036 K
	280	100	4.5	1115	1695	1683	1980	23	24036	24036 K30
	300	96	7.5	1244	1725	1683	1980	28	23136	23136 K
	300	118	6	1421	2117	1300.5	1530	34.5	24136	24136 K30
	320	86	9	1198	1533	1989	2340	29.5	22236	22236 K
	320	112	7.5	1519	2078	1453.5	1710	39.5	23236	23236 K
	380	126	9	2048	2401	1300.5	1530	71.5	22336	22336 K
190	260	52	3	485	784	1989	2340	8.3	23938	23938 K
	290	75	7.5	900	1313	1836	2160	18	23038	23038 K
	290	100	4.5	1140	1764	1530	1800	24.5	24038	24038 K30
	320	104	7.5	1426	2038	1530	1800	35	23138	23138 K
	320	128	6	1620	2450	1224	1440	43	24138	24138 K30
	340	92	9	1315	1666	1836	2160	36.5	22238	22238 K
	340	120	9	1718	2352	1377	1620	48	23238	23238 K
	400	132	6	2196	2597	1224	1440	82.5	22338	22338 K
200	280	60	4.5	638	1019	1836	2160	11.5	23940	23940 K
	310	82	7.5	1035	1499	1683	1980	23.3	23040	23040 K
	310	109	6	1328	2078	1453.5	1710	31	24040	24040 K30
	340	112	9	1634	2313	950	1300	43	23140	23140 K
	340	140	6	1848	2751	950	1300	53.5	24140	24140 K30
	360	98	9	1498	1895	1683	1980	43.5	22240	22240 K
	360	128	9	1915	2646	1300.5	1530	58	23240	23240 K
	420	138	12	2389	2842	1147.5	1350	95	22340	22340 K

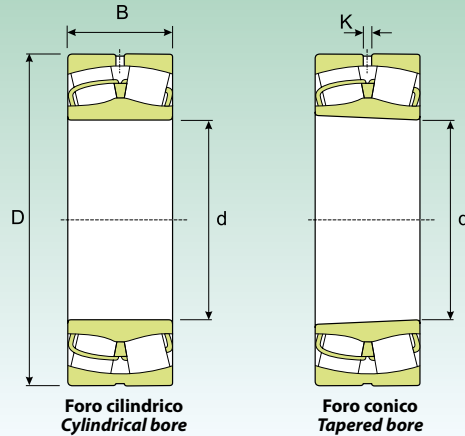
A richiesta disponibile con scanalatura circonferenziale a tre fori di lubrificazione sull'anello esterno.
Under request available with circumferential groove and three lubrication holes in outer ring.

**CUSCINETTI ORIENTABILI A RULLI
SELF-ALIGNING ROLLER BEARINGS**


Dimensioni (mm) Dimension (mm)				Coefficiente di carico (kN) Load rating (kN)		Velocità limite (giri/min) Speed limit (Rpm)		Peso (Kg) Weight (Kg)	Sigla Designation	
d (mm)	D (mm)	B (mm)	K (mm)	Dinamico Dynamic C	Statico Static C ₀	Lubrificazione Lubrication			Foro cilindrico Cylindrical bore	Foro Conico Tapered bore
						Grasso Grease	Olio Oil			
220	300	60	4.5	648	1058	1683	1980	12.5	23944	23944 K
	340	90	7.5	1225	1823	1530	1800	30.5	23044	23044 K
	340	118	6	1600	2548	1300.5	1530	40	24044	24044 K30
	370	120	9	1849	2695	900	1200	53.5	23144	23144 K
	370	150	6	2169	3283	1071	1260	67	24144	24144 K30
	400	108	9	1800	2313	1530	1800	60.5	22244	22244 K
	400	144	9	2455	3381	1147.5	1350	81.5	23244	23244 K
	460	145	12	2795	3381	1071	1260	120	22344	22344 K
240	320	60	4.5	669	1137	1530	1800	13.5	23948	23948 K
	360	92	7.5	1315	2038	1453.5	1710	33.5	23048	23048 K
	360	118	6	1639	2646	1224	1440	43	24048	24048 K30
	400	128	9	2149	3136	1224	1440	66.5	23148	23148 K
	400	160	6	2444	3822	994.5	1170	83	24148	24148 K30
	440	120	9	2215	2940	1377	1620	83	22248	22248 K
	440	160	9	2842	4214	994.5	1170	110	23248	23248 K
	500	155	12	3191	3920	994.5	1170	155	22348	22348 K
260	360	75	4.5	1035	1764	1453.5	1710	23.5	23952	23952 K
	400	104	7.5	1642	2499	1300.5	1530	48.5	23052	23052 K
	400	140	6	2090	3381	1071	1260	65.5	24052	24052 K30
	440	144	9	2513	3822	1071	1260	90.5	23152	23152 K
	440	180	6	3025	4704	918	1080	110	24152	24152 K30
	480	130	12	2781	3479	1224	1440	110	22252	22252 K
	480	174	12	3331	4655	918	1080	140	23252	23252 K
	540	165	12	3612	4459	841.5	990	190	22352	22352 K
280	380	75	6	1000	1725	1300.5	1530	25	23956	23956 K
	420	106	9	1759	2793	850	1100	52.5	23056	23056 K
	420	140	6	2202	3724	1071	1260	69.5	24056	24056 K30
	460	146	9	2631	4165	994.5	1170	97	23156	23156 K
	460	180	7.5	3121	5008	841.5	990	120	24156	24156 K30
	500	130	12	2748	3675	1147.5	1350	115	22256	22256 K
	500	176	12	3391	4802	841.5	990	150	23256	23256 K
	580	175	12	4104	5096	841.5	990	235	22356	22356 K
300	380	90	-	620	1560	1150	1350	16.5	23860	23860 K
	420	90	6	1389	2450	1224	1440	39.5	23960	23960 K
	460	118	9	2191	3381	1147.5	1350	71.5	23060	23060 K
	460	160	7.5	2691	4655	918	1080	97	24060	24060 K30
	500	160	9	3302	5008	918	1080	125	23160	23160 K
	500	200	7.5	3802	6204	765	900	160	24160	24160 K30
	540	140	12	3192	4165	1071	1260	145	22260	22260 K
	540	192	12	3987	5772	765	900	190	23260	23260 K
320	440	90	6	1462	2646	1147.5	1350	42	23964	23964 K
	480	121	9	2302	3724	1071	1260	78	23064	23064 K
	480	160	7.5	2921	5008	918	1080	100	24064	24064 K30
	540	176	12	3881	5880	841.5	990	165	23164	23164 K
	540	218	9	4321	7004	688.5	810	210	24164	24164 K30
	580	150	12	3685	4802	994.5	1170	175	22264	22264 K
	580	208	12	4584	6566	500	630	240	23264	23264 K

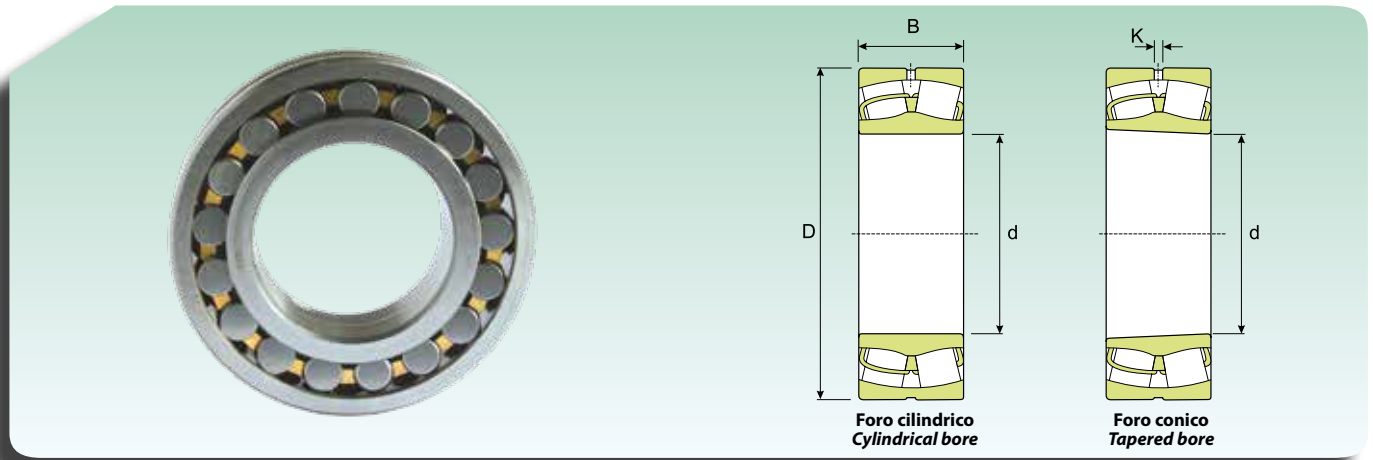
A richiesta disponibile con scanalatura circonferenziale a tre fori di lubrificazione sull'anello esterno.
Under request available with circumferential groove and three lubrication holes in outer ring.

CUSCINETTI ORIENTABILI A RULLI
SELF-ALIGNING ROLLER BEARINGS



Dimensioni (mm) Dimension (mm)				Coefficiente di carico (kN) Load rating (kN)		Velocità limite (giri/min) Speed limit (Rpm)		Peso (Kg) Weight (Kg)	Sigla Designation	
d (mm)	D (mm)	B (mm)	K (mm)	Dinamico Dynamic C	Statico Static C ₀	Lubrificazione Lubrication			Foro cilindrico Cylindrical bore	Foro Conico Tapered bore
						Grasso Grease	Olio Oil			
340	460	90	6	1465	2815	1071	1260	45.5	23968	23968 K
	520	133	12	2795	4481	994.5	1170	105	23068	23068 K
	520	180	9	3584	6076	841.5	990	140	24068	24068 K30
	580	190	12	4204	6664	765	900	210	23168	23168 K
	580	243	9	5397	8504	650.25	765	280	24168	24168 K30
	620	224	12	5304	7644	612	720	295	23268	23268 K
360	480	90	6	1429	2695	994.5	1170	46	23972	23972 K
	540	134	12	2802	4704	918	1080	110	23072	23072 K
	540	180	9	3651	6419	765	900	145	24072	24072 K30
	600	192	12	4480	6811	765	900	220	23172	23172 K
	600	243	9	5679	9195	612	720	280	24172	24172 K30
	650	170	12	4380	6076	650.25	765	255	22272	22272 K
	650	232	12	5585	8134	573.75	675	335	23272	23272 K
380	520	106	7.5	2000	3724	918	1080	69	23976	23976 K
	560	135	12	2939	4900	918	1080	115	23076	23076 K
	560	180	9	3715	6664	726.75	855	150	24076	24076 K30
	620	194	12	4885	6958	765	900	230	23176	23176 K
	620	243	9	5868	9669	650.25	765	300	24176	24176 K30
	680	240	12	6094	9015	573.75	675	375	23276	23276 K
400	540	106	7.5	2001	3822	918	1080	71	23980	23980 K
	600	148	12	3451	5705	841.5	990	150	23080	23080 K
	600	200	12	4444	7840	688.5	810	205	24080	24080 K30
	650	200	12	4775	7497	726.75	855	265	23180	23180 K
	650	250	12	6248	10388	612	720	340	24180	24180 K30
	720	256	12	6790	10192	512.55	603	450	23280	23280 K
	820	243	12	7745	10200	573.75	675	650	22380	22380 K
	420	560	106	9	2040	4067	841.5	990	74.5	23984
620		150	12	3495	5880	841.5	990	155	23084	23084 K
620		200	12	4550	8134	688.5	810	210	24084	24084 K30
700		224	12	5804	9114	688.5	810	350	23184	23184 K
700		280	12	7425	12348	535.5	630	445	24184	24184 K30
760		272	12	7525	11368	481.95	567	535	23284	23284 K
440		600	118	9	2455	4802	765	900	99.5	23988
	650	157	12	3785	6419	765	900	180	23088	23088 K
	650	212	12	4895	8967	650.25	765	245	24088	24088 K30
	720	226	12	6141	9800	650.25	765	360	23188	23188 K
	720	280	12	7666	12950	400	630	460	24188	24188 K30
	790	280	12	8000	12250	459	540	590	23288	23288 K
460	580	118	6	2038	4802	841.5	990	75.5	24892	24892 K30
	620	118	9	2504	4900	765	900	105	23992	23992 K
	680	163	12	3988	6811	726.75	855	205	23092	23092 K
	680	218	12	5315	9800	612	720	275	24092	24092 K30
	760	240	12	6650	10584	612	720	440	23192	23192 K
	760	300	12	8500	14308	512.55	603	560	24192	24192 K30
	830	296	12	8795	13426	428.4	504	695	23292	23292 K

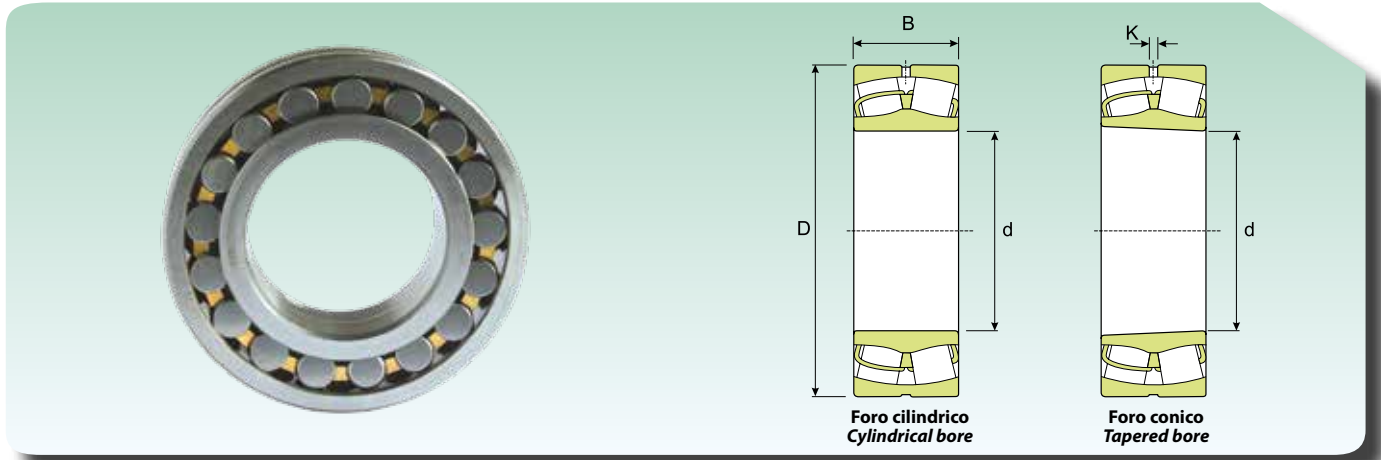
A richiesta disponibile con scanalatura circonferenziale a tre fori di lubrificazione sull'anello esterno.
Under request available with circumferential groove and three lubrication holes in outer ring.

**CUSCINETTI ORIENTABILI A RULLI
SELF-ALIGNING ROLLER BEARINGS**


Dimensioni (mm) Dimension (mm)				Coefficiente di carico (kN) Load rating (kN)		Velocità limite (giri/min) Speed limit (Rpm)		Peso (Kg) Weight (Kg)	Sigla Designation	
d (mm)	D (mm)	B (mm)	K (mm)	Dinamico Dynamic C	Statico Static C ₀	Lubrificazione Lubrication			Foro cilindrico Cylindrical bore	Foro Conico Tapered bore
						Grasso Grease	Olio Oil			
480	600	90	7.5	1411	3675	792	990	61	23896	23896 K
	650	128	7.5	2945	5586	765	900	125	23996	23996 K
	700	165	9	3924	6664	726.75	855	215	23096	23096 K
	700	218	12	5468	10192	573.75	675	285	24096	24096 K30
	790	248	12	7245	11760	573.75	675	485	23196	23196 K
	790	308	12	9015	15288	481.95	567	605	24196	24196 K30
	870	310	12	9679	14700	405.45	477	800	23296	23296 K
500	620	90	7.5	1450	3920	900	720	62	238/500	238/500 K
	670	128	7.5	2925	5880	726.75	855	130	239/500	239/500 K
	720	167	12	4269	7644	688.5	810	225	230/500	230/500 K
	720	218	12	5695	10780	535.5	630	295	240/500	240/500 K30
	830	264	12	7945	12642	535.5	630	580	231/500	231/500 K
	830	325	12	9991	16660	459	540	700	241/500	241/500 K30
	920	336	12	10951	16954	382.5	450	985	232/500	232/500 K
530	650	118	7.5	1803	5194	726.75	855	86	248/530	248/530 K30
	710	136	12	3251	6566	688.5	810	155	239/530	239/530 K
	780	185	12	5184	9114	612	720	310	230/530	230/530 K
	780	250	12	6851	12936	512.55	603	410	240/530	240/530 K30
	870	272	12	8401	13720	512.55	603	645	231/530	231/530 K
	870	335	12	10704	18620	428.4	504	830	241/530	241/530 K30
	980	355	12	13019	19992	367.2	432	1200	232/530	232/530 K
560	750	140	12	3499	7056	340	430	175	239/560	239/560 K
	820	195	12	5666	9996	573.75	675	355	230/560	230/560 K
	820	258	12	7485	14308	481.95	567	465	240/560	240/560 K30
	920	280	12	9406	15680	481.95	567	740	231/560	231/560 K
	920	355	12	12115	19600	240	320	985	241/560	241/560 K30
	1030	365	12	13617	21560	328.95	387	1350	232/560	232/560 K
600	800	150	12	3960	8134	230	400	220	239/600	239/600 K
	870	200	12	6154	11172	535.5	630	405	230/600	230/600 K
	870	272	12	8465	16660	428.4	504	520	240/600	240/600 K30
	980	300	12	10591	17640	428.4	504	895	231/600	231/600 K
	980	375	12	13336	23128	367.2	432	1200	241/600	241/600 K30
	1090	388	12	15330	24990	306	360	1600	232/600	232/600 K
630	780	112	9	2499	5978	573.75	675	120	238/630	238/630 K
	850	165	12	4688	9604	535.5	630	280	239/630	239/630 K
	920	212	12	6795	12250	512.55	603	485	230/630	230/630 K
	920	290	12	8989	17640	405.45	477	645	240/630	240/630 K30
	1030	315	12	12450	20384	405.45	477	1050	231/630	231/630 K
	1030	400	12	14850	26460	344.25	405	1400	241/630	241/630 K30
670	820	112	9	2597	6272	535.5	630	130	238/670	238/670 K
	820	150	9	3542	9310	535.5	630	172	248/670	-
	900	170	12	5015	10584	512.55	603	315	239/670	239/670 K
	980	230	12	7816	14308	240	320	600	230/670	230/670 K
	980	308	12	10216	19992	382.5	450	790	240/670	240/670 K30
	1090	336	12	12904	21952	382.5	450	1250	231/670	231/670 K

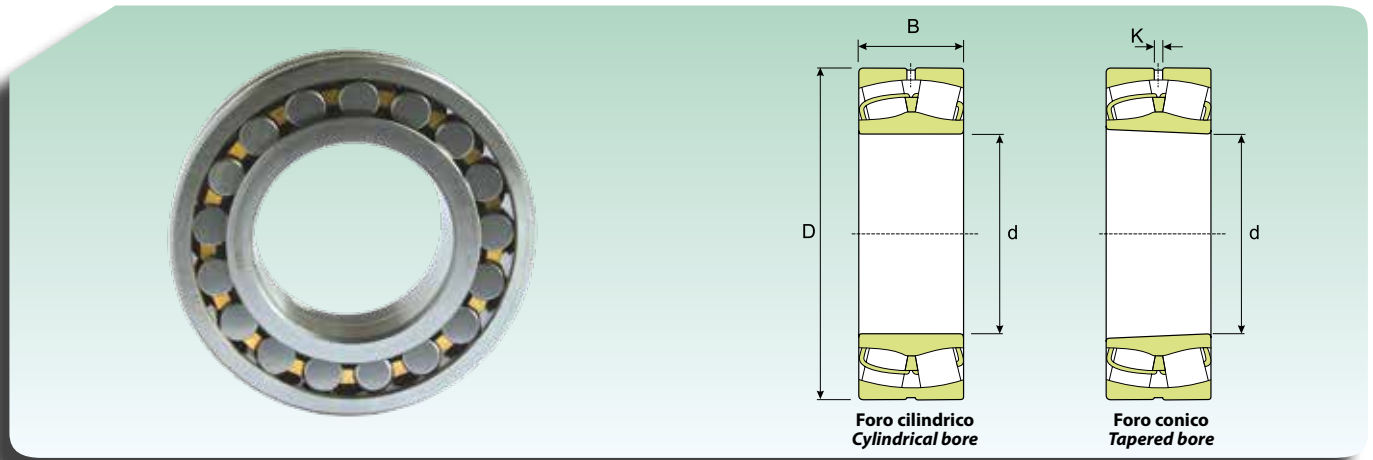
A richiesta disponibile con scanalatura circonferenziale a tre fori di lubrificazione sull'anello esterno.
Under request available with circumferential groove and three lubrication holes in outer ring.

CUSCINETTI ORIENTABILI A RULLI
SELF-ALIGNING ROLLER BEARINGS



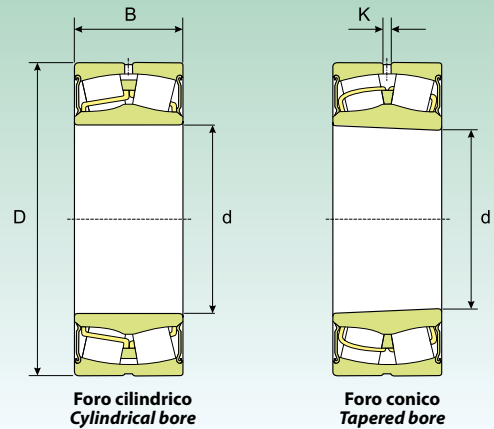
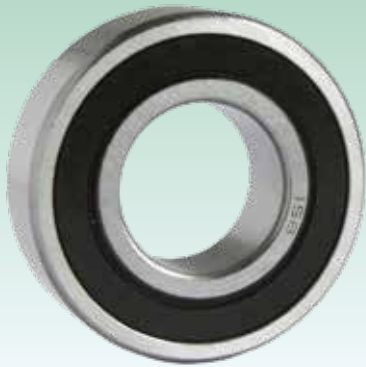
Dimensioni (mm) Dimension (mm)				Coefficiente di carico (kN) Load rating (kN)		Velocità limite (giri/min) Speed limit (Rpm)		Peso (Kg) Weight (Kg)	Sigla Designation	
d (mm)	D (mm)	B (mm)	K (mm)	Dinamico Dynamic C	Statico Static C ₀	Lubrificazione Lubrication			Foro cilindrico Cylindrical bore	Foro Conico Tapered bore
						Grasso Grease	Olio Oil			
670	1090	412	12	16250	28420	306	360	1600	241/670	241/670 K30
	1220	438	12	18395	29890	275.4	324	2270	232/670	232/670 K
710	870	118	12	2956	7350	512.55	603	153	238/710	-
	950	180	12	5616	11760	240	300	365	239/710	239/710 K
	950	243	12	6754	15288	382.5	450	495	249/710	249/710 K30
	1030	236	12	8513	15974	428.4	504	670	230/710	230/710 K
	1030	315	12	10975	22344	344.25	405	895	240/710	240/710 K30
	1150	345	12	14513	25480	344.25	405	1450	231/710	231/710 K
	1150	438	12	17681	31850	290.7	342	1900	241/710	241/710 K30
	1280	450	12	20006	33810	244.8	288	2610	232/710	232/710 K
750	920	128	12	3350	8330	459	540	180	238/750	238/750 K
	1000	185	12	6006	12936	428.4	504	420	239/750	239/750 K
	1000	250	12	7554	17640	367.2	432	560	249/750	249/750 K30
	1090	250	12	9895	18228	405.45	477	795	230/750	230/750 K
	1090	335	12	12014	23200	328.95	387	1065	240/750	240/750 K30
	1220	365	12	16209	28420	328.95	387	1700	231/750	231/750 K
	1220	475	12	20013	36750	275.4	324	2100	241/750	241/750 K30
	1360	475	12	22044	35770	229.5	270	3050	232/750	232/750 K
800	980	180	12	4695	12642	428.4	504	300	248/800	248/800 K30
	1060	195	12	6491	14014	220	530	470	239/800	239/800 K
	1060	258	12	7994	18914	328.95	387	640	249/800	249/800 K30
	1150	258	12	10185	19600	367.2	432	895	230/800	230/800 K
	1150	345	12	13199	27930	306	360	1200	240/800	240/800 K30
	1280	375	12	17887	30870	306	360	1920	231/800	231/800 K
	1280	475	12	21390	39690	244.8	288	2300	241/800	241/800 K30
	850	1030	136	12	3812	9800	405.45	477	240	238/850
1120		200	12	7040	15288	367.2	432	560	239/850	239/850 K
1120		272	12	9240	22344	306	360	740	249/850	249/850 K30
1220		272	12	10991	21168	344.25	405	1050	230/850	230/850 K
1220		365	12	14956	30968	275.4	324	1410	240/850	240/850 K30
1360		400	12	15778	33810	275.4	324	2200	231/850	231/850 K
1360		500	12	23467	44100	229.5	270	2710	241/850	241/850 K30
900		1090	190	12	5361	14994	367.2	432	370	248/900
	1180	206	12	7589	16660	344.25	405	605	239/900	239/900 K
	1280	280	12	11981	22736	306	360	1200	230/900	230/900 K
	1280	375	12	15915	33810	260.1	306	1570	240/900	240/900 K30
	1420	515	12	24990	48020	214.2	252	3350	241/900	241/900 K30
	950	1250	224	12	8500	19208	160	220	755	239/950
1250		300	12	10500	25480	260.1	306	1015	249/950	249/950 K30
1360		300	12	14041	27930	290.7	342	1450	230/950	230/950 K
1360		412	12	17505	38220	229.5	270	1990	240/950	240/950 K30
1500		545	12	27466	53900	198.9	234	3535	241/950	241/950 K30

A richiesta disponibile con scanalatura circonferenziale a tre fori di lubrificazione sull'anello esterno.
Under request available with circumferential groove and three lubrication holes in outer ring.

**CUSCINETTI ORIENTABILI A RULLI
SELF-ALIGNING ROLLER BEARINGS**


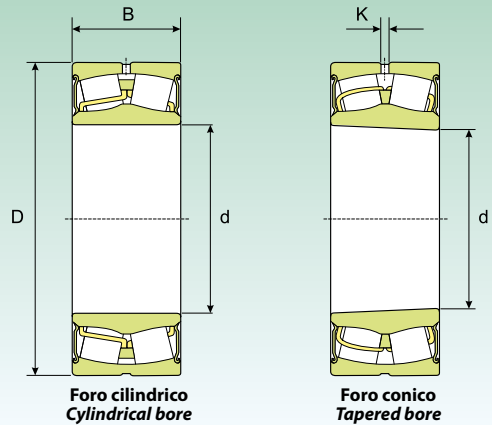
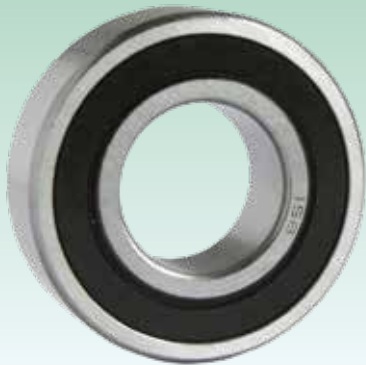
Dimensioni (mm) Dimension (mm)				Coefficiente di carico (KN) Load rating (KN)		Velocità limite (giri/min) Speed limit (Rpm)		Peso (Kg) Weight (Kg)	Sigla Designation	
d (mm)	D (mm)	B (mm)	K (mm)	Dinamico Dynamic C	Statico Static C ₀	Lubrificazione Lubrication			Foro cilindrico Cylindrical bore	Foro Conico Tapered bore
						Grasso Grease	Olio Oil			
1000	1220	165	12	5309	14014	306	360	410	238/1000	238/1000 K
	1320	315	12	11750	28420	244.8	288	1200	249/1000	249/1000 K30
	1420	308	12	12446	29890	275.4	324	1600	230/1000	230/1000 K
	1420	412	12	18280	39690	214.2	252	2140	240/1000	240/1000 K30
	1580	462	12	25194	47040	214.2	252	3500	231/1000	231/1000 K
	1580	580	12	30915	60760	183.6	216	4300	241/1000	241/1000 K30
1060	1280	165	12	4674.6	14700	273.6	342	435	238/1060	238/1060 K
	1280	218	12	5978	19600	273.6	342	570	248/1060	248/1060 K
	1400	250	12	11111	25480	259.2	324	1100	239/1060	239/1060 K
	1400	335	12	13104	31850	201.6	252	1400	249/1060	249/1060 K
	1500	325	12	13524	33320	230.4	288	2250	230/1060	230/1060 K
	1500	438	12	20521	44590	187.2	234	2515	240/1060	240/1060 K
1120	1360	243	12	7105	23520	244.8	306	735	248/1120	248/1120 K
	1460	335	12	13574	33810	187.2	234	1500	249/1120	249/1120 K
	1580	462	12	22015	49000	172.8	216	2925	240/1120	240/1120 K
1180	1420	180	12	6691	18228	230.4	288	575	238/1180	238/1180 K
	1420	243	12	7555.8	26460	230.4	288	770	248/1180	248/1180 K
	1540	272	12	12881	30380	216	270	1400	239/1180	239/1180 K
	1540	355	12	15584	39690	172.8	216	1800	249/1180	249/1180 K
1250	1750	375	12	20892	44100	93.6	117	2840	230/1250	230/1250 K
1320	1600	280	12	9584.4	32830	187.2	234	1160	248/1320	248/1320 K
	1720	400	12	18497	48020	144	180	2500	249/1320	249/1320 K
1500	1820	315	12	14435	44100	144	180	1710	248/1500	248/1500 K
1800	2180	375	12	20044	61740	93.6	117	2900	248/1800	248/1800 K

CUSCINETTI ORIENTABILI A RULLI SCHERMATI
SEALED SELF-ALIGNING ROLLER BEARINGS



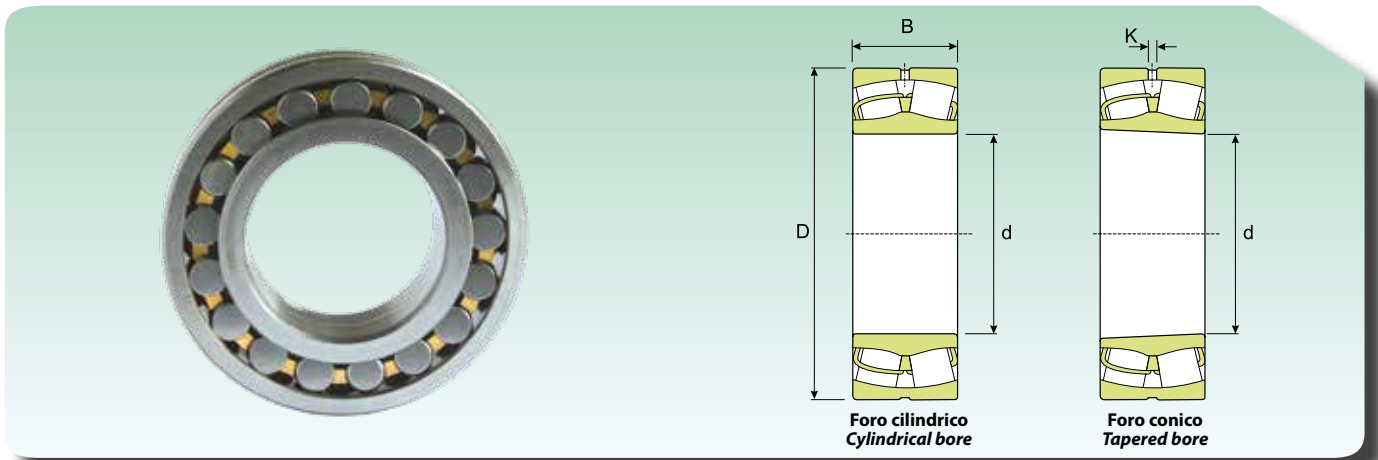
Dimensioni (mm) Dimension (mm)				Coefficiente di carico (KN) Load rating (KN)		Velocità limite (giri/min)	Peso (Kg) Weight (Kg)	Sigla Designation	
d (mm)	D (mm)	B (mm)	K (mm)	Dinamico Dynamic C	Statico Static C ₀	Speed limit (Rpm)		Foro cilindrico Cylindrical bore	Foro Conico Tapered bore
25	52	23	2	49	43.12	3060	0.31	22205-2RS*	-
30	62	25	2	65	58.8	7500	0.34	22206-2RS*	-
35	72	28	2	88	83.3	2040	0.52	22207-2RS*	-
40	80	28	3	97.4	90.5	1870	0.57	22208-2RS*	22208-2RSK
	90	38	3	153	139	1615	1.2	22308-2RS	-
45	85	28	3	103	99	1700	0.66	22209-2RS*	22209-2RSK
50	90	28	3	106	107	1615	0.7	22210-2RS*	22210-2RSK
55	100	31	3	127	126	1445	1	22211-2RS*	22211-2RSK
	120	49	3	278	278	1190	2.8	22311-2RS	-
60	110	34	3	157	164	1360	1.3	22212-2RS*	22212-2RSK
65	120	38	3	196	214	1275	1.6	22213-2RS*	22213-2RSK
70	125	38	3	210	225	1190	1.8	22214-2RS*	22214-2RSK
75	130	38	3	215	238	1105	2.1	22215-2RS*	22215-2RSK
	160	64	4.5	459	472	807.5	6.5	22315-2RS	-
80	140	40	3	240	260	1020	2.4	22216-2RS*	22216-2RSK
85	150	44	3	288	323	935	3	22217-2RS*	22217-2RSK
90	160	48	3	329	372	850	3.7	22218-2RS*	22218-2RSK
100	180	55	4.5	430	485	765	5.5	22220-2RS*	-
110	170	45	4.5	324	440	765	3.75	23022-2RS	-
	180	56	4.5	450	583	680	5.55	23122-2RS	-
	180	69	3	598	742	535.5	6.85	24122-2RS	-
	200	63	4.5	569	636	680	7.6	22222-2RS*	-
120	180	46	3	364	499	722.5	4.2	23024-2RS	-
	180	60	3	454	665	569.5	5.45	24024-2RS	-
	200	80	3	677	946	476	10.5	24124-2RS	-
	215	69	6	652	749.7	637.5	9.75	22224-2RS*	-
130	200	52	4.5	450	607	680	6	23026-2RS	-
	200	69	3	565	810	510	8.05	24026-2RS	-
	210	80	3	699	990	450.5	11	24126-2RS	-
140	210	69	3	598	905	476	8.55	24028-2RS	-
	225	85	4.5	794	1155	382.5	13.5	24128-2RS	-
	250	88	6	960	1250	450.5	19.5	23228-2RS	-
150	225	75	3	678	1026	450.5	10.5	24030-2RS	-
	250	100	4.5	1052	1520	340	20	24130-2RS	-
160	240	80	4.5	775	1196	382.5	13	24032-2RS	-
	270	86	7.5	1016	1400	450.5	20.5	23132-2RS	-

* Equivalente SKF BS2-22...-2CS
 * SKF Equivalent BS2-22...-2CS

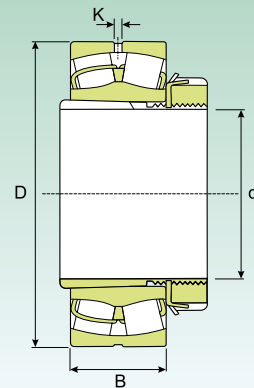
**CUSCINETTI ORIENTABILI A RULLI SCHERMATI
SEALED SELF-ALIGNING ROLLER BEARINGS**


Dimensioni (mm) Dimension (mm)				Coefficiente di carico (KN) Load rating (KN)		Velocità limite (giri/min)	Peso (Kg) Weight (Kg)	Sigla Designation	
d (mm)	D (mm)	B (mm)	K (mm)	Dinamico Dynamic C	Statico Static C ₀	Speed limit (Rpm)		Foro cilindrico Cylindrical bore	Foro Conico Tapered bore
170	260	90	4.5	960	1492	340	17.5	24034-2RS	-
	280	109	4.5	1245	1858	306	27.5	24134-2RS	-
180	280	100	4.5	1130	1712	323	23	24036-2RS	-
190	320	128	6	1655	2444	289	43	24138-2RS	-
200	340	140	6	1854	2744	272	53.5	24140-2RS	-
	360	128	9	1917	2646	365.5	58	23240-2RS	-
220	300	60	4.5	648	1059	510	12.5	23944-2RS	-

CUSCINETTI ORIENTABILI A RULLI PER APPLICAZIONI VIBRANTI
SELF-ALIGNING ROLLER VIBRATING SCREEN BEARINGS



Dimensioni (mm) Dimension (mm)				Coefficiente di carico (kN) Load rating (kN)		Velocità limite (giri/min) Speed limit (Rpm)		Peso (Kg) Weight (Kg)	Sigla Designation	
d (mm)	D (mm)	B (mm)	K (mm)	Dinamico Dynamic C	Statico Static C ₀	Lubrificazione Lubrication			Foro cilindrico Cylindrical bore	Foro Conico Tapered bore
						Grasso Grease	Olio Oil			
40	90	33	3	152	137	6120	7200	1.05	22308 VA	-
45	100	36	3	185	179	5355	6300	1.4	22309 VA	-
50	110	40	3	224	220	4820	5670	1.9	22310 VA	-
55	120	43	3	275	275	4284	5040	2.45	22311 VA	22311 KVA
60	130	46	4.5	319	328	4055	4770	3.1	22312 VA	22312 KVA
65	140	48	4.5	349.8	353	3825	4500	3.75	22313 VA	22313 KVA
70	150	51	4.5	406	421	3443	4050	4.55	22314 VA	22314 KVA
75	160	55	4.5	454	466	3290	3870	5.55	22315 VA	22315 KVA
80	170	58	4.5	505	530	3060	3600	6.6	22316 VA	22316 KVA
85	180	60	4.5	564	608	2907	3420	7.65	22317 VA	22317 KVA
90	190	64	6	629	683	2754	3240	9.05	22318 VA	22318 KVA
95	200	67	6	689	750	2601	3060	10.5	22319 VA	22319 KVA
100	215	73	6	838	931	2295	2700	13.5	22320 VA	22320 KVA
110	240	80	7.5	970	1100	2142	2520	18.4	22322 VA	22322 KVA
120	260	86	7.5	1003	1098	1989	2340	23	22324 VA	22324 KVA
130	280	93	9	1163	1294	1836	2160	29	22326 VA	22326 KVA
140	300	102	9	1345	1529	1683	1980	36.5	22328 VA	22328 KVA
150	320	108	9	1510	1725	1530	1800	43.5	22330 VA	22330 KVA
160	340	114	9	1655	1921	1454	1710	52	22332 VA	22332 KVA
170	360	120	9	1725	2117	1377	1620	61	22334 VA	22334 KVA
180	380	126	12	2048	2401	1301	1530	71.5	22336 VA	22336 KVA
190	400	132	12	2196	2597	1224	1440	82.5	22338 VA	22338 KVA
200	420	138	12	2389	2842	1148	1350	95	22340 VA	22340 KVA
220	460	145	12	2795	3381	1071	1260	120	22344 VA	22344 KVA
240	500	155	12	3191	3920	995	1170	155	22348 VA	22348 KVA

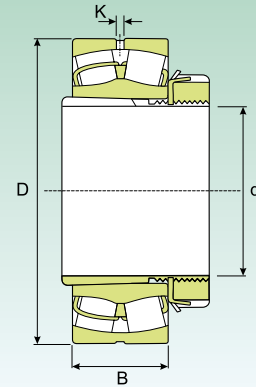
**CUSCINETTI ORIENTABILI A RULLI CON BUSSOLA DI TRAZIONE
 SELF-ALIGNING ROLLER BEARINGS WITH ADAPTER SLEEVE**


Dimensioni (mm) Dimension (mm)					Coefficiente di carico (kN) Load rating (kN)		Velocità limite (giri/min) Speed limit (Rpm)		Peso (Kg) Weight (Kg)	Sigla Designation	
d (mm)	D (mm)	B (mm)	K (mm)	B1 (mm)	Dinamico Dynamic C	Statico Static C ₀	Lubrificazione Lubrication			Cuscinetto Bearing	Bussola di trazione Adapters sleeve
							Grasso Grease	Olio Oil			
20	52	18	2	29	49	43	13005	15300	0.33	22205 EKW33	H 305
	62	20	2	31	65	59	10710	12600	0.39	22206 EKW33	H 306
25	72	19	-	31	65	60	7650	9000	0.51	21306 EKW33	H 306
	72	23	2	53	87.1	83	9180	10800	0.59	22207 EKW33	H 307
30	80	21	-	35	78.8	71	7268	8550	0.69	21307 EKW33	H 307
	80	23	3	36	97	90.5	8415	9900	0.68	22208 EKW33	H 308
35	90	23	3	36	106	107	7268	8550	0.92	21308 EKW33	H 308
	90	33	3	46	152	137	6120	7200	1.25	22308 EKW33	H 2308
	85	23	3	39	101	97	7650	9000	0.81	22209 EKW33	H 309
40	100	25	3	39	126	126	6503	7650	1.2	21309 EKW33	H 309
	100	36	3	50	185	179	5355	6300	1.7	22309 EKW33	H 2309
	90	23	3	42	105	106	7268	8550	0.9	22210 EKW33	H 310
45	110	27	3	42	156	163	5738	6750	1.6	21310 EKW33	H 310
	110	40	3	55	224	220	4820	5670	2.25	22310 EKW33	H 2310
	100	25	3	45	126	126	6503	7650	1.1	22211 EKW33	H 311
50	120	29	3	45	156	163	5738	6750	1.95	21311 EKW33	H 311
	120	43	3	59	275	275	4284	5040	2.85	22311 EKW33	H 2311
	110	28	3	47	156	163	5738	6750	1.45	22212 EKW33	H 312
55	130	31	3	47	212	236	4820	5670	2.35	21312 EKW33	H 312
	130	46	4.5	62	319	328	4055	4770	3.5	22312 EKW33	H 2312
	120	31	3	50	193.6	212	5355	6300	1.95	22213 EKW33	H 313
60	140	33	3	50	239	265	4590	5400	2.9	21313 EKW33	H 313
	140	48	4.5	65	349.8	353	3825	4500	4.2	22313 EKW33	H 2313
	130	31	3	55	213	235	4820	5670	2.45	22215 EKW33	H 315
65	160	37	3	55	286	319	4284	5040	4.5	21315 EKW33	H 315
	160	55	4.5	73	454	466	3290	3870	6.5	22315 EKW33	H 2315
	140	33	3	59	238	265	4590	5400	3	22216 EKW33	H 316
70	170	39	3	59	325	368	4055	4770	5.3	21316 EKW33	H 316
	170	58	4.5	78	505	530	3060	3600	7.65	22316 EKW33	H 2316
	150	36	3	63	285	319	4284	5040	3.7	22217 EKW33	H 317
75	180	41	3	63	325	368	4055	4770	6.2	21317 EKW33	H 317
	180	60	4.5	82	564	608	2907	3420	8.85	22317 EKW33	H 2317
	160	40	3	65	325	368	4055	4770	4.55	22218 EKW33	H 318
80	160	52.4	3	86	365	431	2907	3420	6	23218 EKW33	H 2318
	190	43	4.5	65	385	441	3672	4320	7.25	21318 EKW33	H 318
	190	64	6	86	629	683	2754	3240	10.5	22318 EKW33	H 2318
	170	43	4.5	68	381	441	3672	4320	5.45	22219 EKW33	H 319
85	200	45	4.5	68	422	480	3443	4050	8.25	21319 EKW33	H 319
	200	67	6	90	689	750	2601	3060	12	22319 EKW33	H 2319

CUSCINETTI ORIENTABILI A RULLI CON BUSSOLA DI TRAZIONE
SELF-ALIGNING ROLLER BEARINGS WITH ADAPTER SLEEVE

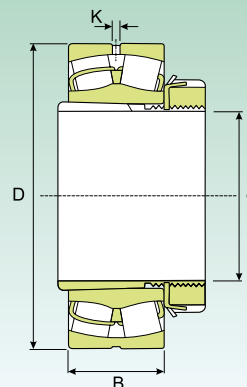


Dimensioni (mm) Dimension (mm)					Coefficiente di carico (kN) Load rating (kN)		Velocità limite (giri/min) Speed limit (Rpm)		Peso (Kg) Weight (Kg)	Sigla Designation	
d (mm)	D (mm)	B (mm)	K (mm)	B1 (mm)	Dinamico Dynamic C	Statico Static C ₀	Lubrificazione Lubrication			Cuscinetto Bearing	Bussola di trazione Adapters sleeve
							Grasso Grease	Olio Oil			
90	165	52	3	76	378	480	3060	3600	6.15	23120 EKW33	H 3120
	180	46	4.5	71	427	482	3443	4050	6.4	22220 EKW33	H 320
	180	60.3	4.5	97	487	588	2601	3060	8.75	23220 EKW33	H 2320
	215	47	4.5	71	425	480	3443	4050	10.5	21320 EKW33	H 320
	215	73	6	97	838	931	2295	2700	15.2	22320 EKW33	H 2320
100	170	45	3	77	319	431	3290	3870	5.75	23022 EKW33	H 322
	180	56	4.5	81	443	573	2754	3240	7.7	23122 EKW33	H 3122
	200	53	4.5	77	560	628	3060	3600	8.9	22222 EKW33	H 322
	200	69.8	4.5	105	615	750	2448	2880	12.5	23222 EKW33	H 2322
	240	80	7.5	105	970	1100	2142	2520	21	22322 EKW33	H 2322
110	180	46	3	72	359	500	3060	3600	5.95	23024 EKW33	H 3024
	200	62	4.5	88	524	681	2601	3060	10	23124 EKW33	H 3124
	215	58	6	88	641	765	2907	3420	11	22224 EKW33	H 3124
	215	76	4.5	112	721	911	2142	2520	14.7	23224 EKW33	H 2324
	260	86	7.5	112	1003	1098	1989	2340	25.5	22324 EKW33	H 2324
115	200	52	4.5	80	442	598	2754	3240	8.6	23026 EKW33	H 3026
	210	64	4.5	92	574	764	2448	2880	12	23126 EKW33	H 3126
	230	64	6	92	744	917	2754	3240	14	22226 EKW33	H 3126
	230	80	4.5	121	812	1039	1989	2340	18.5	23226 EKW33	H 2326
	280	93	9	121	1163	1294	1836	2160	33	22326 EKW33	H 2326
125	210	53	4.5	82	475	666	2601	3060	9.4	23028 EKW33	H 3028
	225	68	4.5	97	645	882	2142	2520	14.3	23128 EKW33	H 3128
	250	68	6	97	731	882	2448	2880	17.8	22228 EKW33	H 3128
	250	88	6	131	944	1225	1836	2160	24	23228 EKW33	H 2328
	300	102	9	131	1345	1529	1683	1980	41	22328 EKW33	H 2328
135	225	56	4.5	87	525	735	2448	2880	11	23030 EKW33	H 3030
	250	80	6	111	868	1176	1989	2340	20.8	23130 EKW33	H 3130
	270	73	7.5	111	883	1058	2295	2700	22.8	22230 EKW33	H 3130
	270	96	6	139	1115	1431	1683	1980	30	23230 EKW33	H 2330
	320	108	9	139	1510	1725	1530	1800	47.4	22330 EKW33	H 2330
140	240	60	6	93	600	862	2295	2700	14.5	23032 EKW33	H 3032
	270	86	7.5	119	1005	1343	1836	2160	27.3	23132 EKW33	H 3132
	290	80	7.5	119	1030	1264	2142	2520	29.3	22232 EKW33	H 3132
	290	104	7.5	147	1260	1627	1683	1980	38.8	23232 EKW33	H 2332
	340	114	9	147	1655	1921	1454	1710	60	22332 EKW33	H 2332
150	260	67	6	101	696	1039	2142	2520	18.3	23034 EKW33	H 3034
	280	88	7.5	122	1019	1470	1836	2160	29.5	23134 EKW33	H 3134
	310	86	9	122	1162	1445	1989	2340	36	22234 EKW33	H 3134
	310	110	7.5	154	1372	1891	1530	1800	46.4	23234 EKW33	H 2334
	360	120	9	154	1725	2117	1377	1620	69.5	22334 EKW33	H 2334

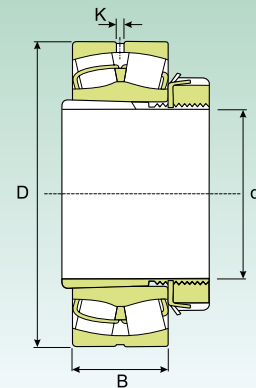
**CUSCINETTI ORIENTABILI A RULLI CON BUSSOLA DI TRAZIONE
SELF-ALIGNING ROLLER BEARINGS WITH ADAPTER SLEEVE**


Dimensioni (mm) Dimension (mm)					Coefficiente di carico (kN) Load rating (kN)		Velocità limite (giri/min) Speed limit (Rpm)		Peso (Kg) Weight (Kg)	Sigla Designation	
d (mm)	D (mm)	B (mm)	K (mm)	B1 (mm)	Dinamico Dynamic C	Statico Static C ₀	Lubrificazione Lubrication			Cuscinetto Bearing	Bussola di trazione Adapters sleeve
							Grasso Grease	Olio Oil			
160	250	52	3	87	501	813	2142	2520	13.4	23936 EKW33	H 3936
	280	74	7.5	109	868	1225	1989	2340	23.2	23036 EKW33	H 3036
	300	96	7.5	131	1244	1725	1683	1980	37	23136 EKW33	H 3136
	320	86	9	131	1198	1533	1989	2340	38.2	22236 EKW33	H 3136
	320	112	7.5	161	1519	2078	1454	1710	49.5	23236 EKW33	H 2336
	380	126	12	161	2048	2401	1301	1530	80	22336 EKW33	H 2336
170	260	52	9	89	485	784	1989	2340	14.5	23938 EKW33	H 3938
	290	75	7.5	112	900	1313	1836	2160	24.8	23038 EKW33	H 3038
	320	104	7.5	141	1426	2038	1530	1800	44.5	23138 EKW33	H 3138
	340	92	9	141	1315	1666	1836	2160	46	22238 EKW33	H 3138
	340	120	9	169	1718	2352	1377	1620	59	23238 EKW33	H 2338
	400	132	12	169	2196	2597	1224	1440	93	22338 EKW33	H 2338
180	280	60	4.5	98	638	1019	1836	2160	19	23940 EKW33	H 3940
	310	82	7.5	120	1035	1499	1683	1980	31.7	23040 EKW33	H 3040
	340	112	9	150	1634	2313	1454	1710	55.5	23140 EKW33	H 3140
	360	98	9	150	1498	1895	1683	1980	66	22240 EKW33	H 3140
	360	128	9	176	1915	2646	1301	1530	70	23240 EKW33	H 2340
	420	138	12	176	2389	2842	1148	1350	107	22340 EKW33	H 2340
200	300	60	4.5	96	648	1058	1683	1980	22.5	23944 EKW33	OH 3944 H
	340	90	7.5	126	1225	1823	1530	1800	39.4	23044 EKW33	OH 3044 H
	370	120	9	161	1849	2695	1301	1530	67.5	23144 EKW33	OH 3144 H
	400	108	9	161	1800	2313	1530	1800	74	22244 EKW33	OH 3144 H
	400	144	9	186	2455	3381	1148	1350	96.5	23244 EKW33	OH 2344 H
	460	145	12	186	2795	3381	1071	1260	135	22344 EKW33	OH 2344 H
220	320	60	4.5	101	669	1137	1530	1800	24.5	23948 EKW33	OH 3948 H
	360	92	7.5	133	1315	2038	1454	1710	44.5	23048 EKW33	OH 3048 H
	400	128	9	172	2148	3136	1224	1440	80.5	23148 EKW33	OH 3148 H
	440	120	12	172	2215	2940	1377	1620	99	22248 EKW33	OH 3148 H
	440	160	12	199	2842	4214	995	1170	125	23248 EKW33	OH 2348 H
	500	155	12	199	3191	3920	995	1170	170	22348 EKW33	OH 2348 H
240	360	75	4.5	116	1035	1764	1454	1710	35	23952 EKW33	OH 3952 H
	400	104	9	145	1642	2499	1301	1530	60.5	23052 EKW33	OH 3052 H
	440	144	9	190	2513	3822	1071	1260	109	23152 EKW33	OH 3152 H
	480	130	12	190	2781	3479	1224	1440	130	22252 EKW33	OH 3152 H
	480	174	12	211	3331	4655	918	1080	160	23252 EKW33	OH 2352 H
	540	165	12	211	3612	4459	842	990	215	22352 EKW33	OH 2352 H
260	380	75	6	121	1000	1725	1301	1530	40	23956 EKW33	OH 3956 H
	420	106	9	152	1759	2793	1224	1440	67	23056 EKW33	OH 3056 H
	460	146	9	195	2631	4165	995	1170	115	23156 EKW33	OH 3156 H
	500	130	12	195	2748	3675	1148	1350	135	22256 EKW33	OH 3156 H
	500	176	12	224	3391	4802	842	990	165	23256 EKW33	OH 2356 H
	580	175	12	224	4104	5096	842	990	250	22356 EKW33	OH 2356 H

CUSCINETTI ORIENTABILI A RULLI CON BUSSOLA DI TRAZIONE
SELF-ALIGNING ROLLER BEARINGS WITH ADAPTER SLEEVE



Dimensioni (mm) Dimension (mm)					Coefficiente di carico (kN) Load rating (kN)		Velocità limite (giri/min) Speed limit (Rpm)		Peso (Kg) Weight (Kg)	Sigla Designation	
d (mm)	D (mm)	B (mm)	K (mm)	B1 (mm)	Dinamico Dynamic C	Statico Static C ₀	Lubrificazione Lubrication			Cuscinetto Bearing	Bussola di trazione Adapters sleeve
							Grasso Grease	Olio Oil			
280	420	90	6	140	1389	2450	1224	1440	58,5	23960 EKW33	OH 3960 H
	460	118	9	168	2191	3381	1148	1350	90	23060 EKW33	OH 3060 H
	500	160	9	208	3302	5008	918	1080	150	23160 EKW33	OH 3160 H
	540	140	12	208	3192	4165	1071	1260	170	22260 EKW33	OH 3160 H
	540	192	12	240	3987	5772	765	900	210	23260 EKW33	OH 3260 H
300	440	90	6	140	1462	2646	1148	1350	61	23964 EKW33	OH 3964 H
	480	121	9	171	2302	3724	1071	1260	97	23064 EKW33	OH 3064 H
	540	176	12	226	3881	5880	842	990	185	23164 EKW33	OH 3164 H
	580	150	12	226	3685	4802	995	1170	200	22264 EKW33	OH 3164 H
	580	208	12	258	4584	6566	727	855	260	23264 EKW33	OH 3264 H
320	460	90	6	144	1465	2815	1071	1260	67,5	23968 EKW33	OH 3968 H
	520	133	12	187	2795	4481	995	1170	130	23068 EKW33	OH 3068 H
	580	190	12	254	4204	6664	765	900	250	23168 EKW33	OH 3168 H
	620	224	12	288	5304	7644	612	720	335	23268 EKW33	OH 3268 H
340	480	90	6	144	1429	2695	995	1170	70,5	23972 EKW33	OH 3972 H
	540	134	12	188	2802	4704	918	1080	135	23072 EKW33	OH 3072 H
	600	192	12	259	4480	6811	765	900	260	23172 EKW33	OH 3172 H
	650	170	12	259	4380	6076	650	765	375	22272 EKW33	OH 3172 H
	650	232	12	299	5585	8134	574	675	375	23272 EKW33	OH 3272 H
360	520	106	7,5	164	2000	3724	918	1080	95	23976 EKW33	OH 3976 H
	560	135	12	193	2939	4900	918	1080	145	23076 EKW33	OH 3076 H
	620	194	12	264	4885	6958	765	900	275	23176 EKW33	OH 3176 H
	680	240	12	310	6094	9015	574	675	420	23276 EKW33	OH 3276 H
380	540	106	7,5	168	2001	3822	918	1080	100	23980 EKW33	OH 3980 H
	600	148	12	210	3451	5705	842	990	180	23080 EKW33	OH 3080 H
	650	200	12	272	4775	7497	727	855	325	23180 EKW33	OH 3180 H
	720	256	12	328	6790	10192	513	603	505	23280 EKW33	OH 3280 H
	820	243	12	328	7745	10200	574	675	735	22380 EKW33	OH 3280 H
400	560	106	9	168	2040	4067	842	990	105	23984 EKW33	OH 3984 H
	620	150	12	212	3495	5880	842	990	190	23084 EKW33	OH 3084 H
	700	224	12	304	5804	9114	689	810	410	23184 EKW33	OH 3184 H
	760	272	12	352	7525	11368	482	567	590	23284 EKW33	OH 3284 H
410	600	118	9	189	2455	4802	765	900	150	23988 EKW33	OH 3988 H
	650	157	12	228	3785	6419	765	900	235	23088 EKW33	OH 3088 H
	720	226	12	307	6141	9800	650	765	430	23188 EKW33	OH 3188 H
	790	280	12	361	8000	12250	459	540	670	23288 EKW33	OH 3288 H
430	620	118	9	189	2504	4900	765	900	160	23992 EKW33	OH 3992 H
	680	163	12	234	3988	6811	727	855	265	23092 EKW33	OH 3092 H
	760	240	12	326	6650	10584	612	720	530	23192 EKW33	OH 3192 H
	830	296	12	382	8795	13426	428	504	790	23292 EKW33	2OH 3292 H
450	650	128	9	200	2945	5586	765	900	185	23996 EKW33	OH 3996 H
	700	165	12	237	3924	6664	727	855	275	23096 EKW33	OH 3096 H
	790	248	12	335	7245	11760	574	675	590	23196 EKW33	OH 3196 H
	870	310	12	397	9679	14700	405	477	935	23296 EKW33	OH 3296 H

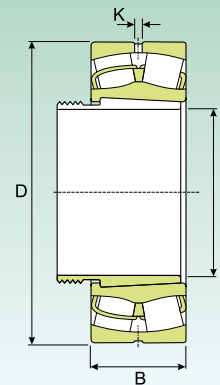
**CUSCINETTI ORIENTABILI A RULLI CON BUSSOLA DI TRAZIONE
SELF-ALIGNING ROLLER BEARINGS WITH ADAPTER SLEEVE**


Dimensioni (mm) Dimension (mm)					Coefficiente di carico (kN) Load rating (kN)		Velocità limite (giri/min) Speed limit (Rpm)		Peso (Kg) Weight (Kg)	Sigla Designation	
d (mm)	D (mm)	B (mm)	K (mm)	B1 (mm)	Dinamico C	Statico C ₀	Lubrificazione Lubrication			Cuscinetto Bearing	Bussola di trazione Adapters sleeve
							Grasso Grease	Olio Oil			
470	670	128	12	208	2925	5880	727	855	195	239/500 EKW33	OH 39/500 H
	720	167	12	247	4269	7644	689	810	290	230/500 EKW33	OH 30/500 H
	830	264	12	356	7945	12642	536	630	690	231/500 EKW33	OH 31/500 H
	920	336	12	428	10951	16954	383	450	1100	232/500 EKW33	OH 32/500 H
500	710	136	12	216	3251	6566	689	810	255	239/530 EKW33	OH 39/530 H
	780	185	12	265	5184	9114	612	720	405	230/530 EKW33	OH 30/530 H
	870	272	12	364	8491	13720	513	603	785	231/530 EKW33	OH 31/530 H
	980	355	12	447	13019	19992	367	432	1360	232/530 EKW33	OH 32/530 H
530	750	140	12	227	3499	7056	612	765	260	239/560 EKW33	OH 39/560 H
	820	195	12	282	5666	9996	540	675	445	230/560 EKW33	OH 30/560 H
	920	280	12	377	9406	15680	453.6	567	880	231/560 EKW33	OH 31/560 H
	1030	365	12	462	13617	21560	309.6	387	1490	232/560 EKW33	OH 32/560 H
560	800	150	12	239	3960	8134	540	675	330	239/600 EKW33	OH 39/600 H
	870	200	12	289	6154	11172	504	630	525	230/600 EKW33	OH 30/600 H
	980	300	12	399	10591	17640	403.2	504	1070	231/600 EKW33	OH 31/600 H
	1090	388	12	487	15330	24990	288	360	1780	232/600 EKW33	OH 32/600 H
600	850	165	12	254	4688	9604	504	630	385	239/630 EKW33	OH 39/630 H
	920	212	12	301	6795	12250	482.4	603	595	230/630 EKW33	OH 30/630 H
	1030	315	12	424	12450	20384	381.6	477	1240	231/630 EKW33	OH 31/630 H
630	900	170	12	264	5015	10584	482.4	603	455	239/670 EKW33	OH 39/670 H
	980	230	12	324	7816	14308	432	540	755	230/670 EKW33	OH 30/670 H
	1090	336	12	456	12904	21952	360	450	1510	231/670 EKW33	OH 31/670 H
	1220	438	12	558	18395	29890	259.2	324	2535	232/670 EKW33	OH 32/670 H
670	950	180	12	286	5616	11760	432	540	525	239/710 EKW33	OH 39/710 H
	1030	236	12	342	8513	15974	403.2	504	860	230/710 EKW33	OH 30/710 H
	1150	345	12	467	14513	25480	324	405	1750	231/710 EKW33	OH 31/710 H
	1280	450	12	572	20033	33810	230.4	288	2995	232/710 EKW33	OH 32/710 H
710	1000	185	12	291	6006	12936	403.2	504	605	239/750 EKW33	OH 39/750 H
	1090	250	12	356	9895	18228	381.6	477	990	230/750 EKW33	OH 30/750 H
	1220	365	12	493	16209	28420	309.6	387	2045	231/750 EKW33	OH 31/750 H
	1360	475	12	603	22044	35770	216	270	3485	232/750 EKW33	OH 32/750 H
750	1060	195	12	303	6491	14014	381.6	477	730	239/800 EKW33	OH 39/800 H
	1150	258	12	366	10185	19600	345.6	432	1200	230/800 EKW33	OH 30/800 H
	1280	375	12	505	17887	30870	288	360	2430	231/800 EKW33	OH 31/800 H
800	1120	200	12	308	7040	15288	345.6	432	950	239/850 EKW33	OH 39/850 H
	1220	272	12	380	10991	21168	324	405	1390	230/850 EKW33	OH 30/850 H
	1360	400	12	536	15778	33810	259.2	324	2800	231/850 EKW33	OH 31/850 H
850	1180	206	12	326	7589	16660	324	405	930	239/900 EKW33	OH 39/900 H
	1280	280	12	400	11981	22736	288	360	1580	230/900 EKW33	OH 30/900 H
900	1250	224	12	344	8500	19208	309.6	387	1120	239/950 EKW33	OH 39/950 H
	1360	300	12	420	14041	27930	273.6	342	1870	230/950 EKW33	OH 30/950 H

CUSCINETTI ORIENTABILI A RULLI CON BUSSOLA DI TRAZIONE SELF-ALIGNING ROLLER BEARINGS WITH ADAPTER SLEEVE

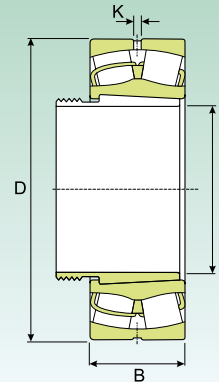


Dimensioni (mm) Dimension (mm)					Coefficiente di carico (kN) Load rating (kN)		Velocità limite (giri/min) Speed limit (Rpm)		Peso (Kg) Weight (Kg)	Sigla Designation	
d (mm)	D (mm)	B (mm)	K (mm)	B1 (mm)	Dinamico Dynamic C	Statico Static C ₀	Lubrificazione Lubrication			Cuscinetto Bearing	Bussola di trazione Adapters sleeve
							Grasso Grease	Olio Oil			
950	1420	308	12	430	12446	29890	259.2	324	2070	230/1000 EKW33	OH 30/1000 H
	1580	462	12	609	25194	47040	201.6	252	4340	231/1000 EKW33	OH 31/1000 H
1000	1400	250	12	372	11111	25480	259.2	324	1590	239/1060 EKW33	OH 39/1060 H
	1500	325	12	447	13524	33320	230.4	288	2800	230/1060 EKW33	OH 30/1060 H

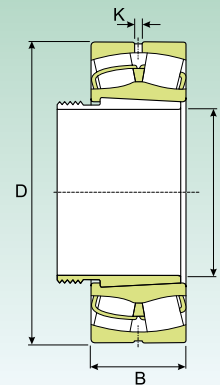
**CUSCINETTI ORIENTABILI A RULLI SU BUSSOLA DI PRESSIONE
 SELF-ALIGNING ROLLER BEARINGS WITH WITHDRAWAL SLEEVE**


Dimensioni (mm) Dimension (mm)				Coefficiente di carico (KN) Load rating (KN)		Velocità limite (giri/min) Speed limit (Rpm)		Peso (Kg) Weight (Kg)	Sigla Designation	
d (mm)	D (mm)	B (mm)	K (mm)	Dinamico Dynamic C	Statico Static C ₀	Lubrificazione Lubrication			Cuscinetto Bearing	Bussola di pressione Withdrawal sleeve
						Grasso Grease	Olio Oil			
35	80	23	3	97	90.5	8415.00	9900	0.6	22208 K	AH 308
	90	23	3	106	107	7267.50	8550	0.84	21308 K	AH 308
	90	33	3	152	137	6120.00	7200	1.2	22308 K	AH 2308
40	85	23	3	101	97	7650.00	9000	0.7	22209 K	AH 309
	100	25	3	126	126	6502.50	7650	1.1	21309 K	AH 309
	100	36	3	185	179	5355.00	6300	1.55	22309 K	AH 2309
45	90	23	3	105	106	7267.50	8550	0.75	22210 K	AHX 310
	110	27	3	156	163	5737.50	6750	1.45	21310 K	AHX 310
	110	40	3	224	220	4819.50	5670	2.1	22310 K	AHX 2310
50	100	25	3	126	126	6502.50	7650	0.95	22211 K	AHX 311
	120	29	3	156	163	5737.50	6750	1.8	21311 K	AHX 311
	120	43	3	275	275	4284.00	5040	2.7	22311 K	AHX 2311
55	110	28	3	156	163	5737.50	6750	1.3	22212 K	AHX 312
	130	31	3	212	236	4819.50	5670	2.2	21312 K	AHX 312
	130	46	4.5	319	328	4054.50	4770	3.3	22312 K	AHX 2312
60	120	31	3	193.6	212	5355.00	6300	1.7	22213 K	AH 313
	140	33	3	239	265	4590.00	5400	2.75	21313 K	AH 313
	140	48	4.5	349.8	353	3825.00	4500	4.1	22313 K	AH 2313
65	125	31	3	209	224	5125.50	6030	1.8	22214 K	AH 314
	150	35	3	285	307	4284.00	5040	3.35	21314 K	AH 314
	150	51	4.5	406	421	3442.50	4050	4.9	22314 K	AHX 2314
70	130	31	3	213	235	4819.50	5670	1.95	22215 K	AH 315
	160	37	3	286	319	4284.00	5040	4.15	21315 K	AH 315
	160	55	4.5	454	466	3289.50	3870	6	22315 K	AHX 2315
75	140	33	3	238	265	4590.00	5400	2.4	22216 K	AH 316
	170	39	3	325	368	4054.50	4770	4.75	21316 K	AH 316
	170	58	4.5	505	530	3060.00	3600	7	22316 K	AHX 2316
80	150	36	3	285	319	4284.00	5040	3.05	22217 K	AHX 317
	180	41	3	325	368	4054.50	4770	5.55	21317 K	AHX 317
	180	60	4.5	564	608	2907.00	3420	8.15	22317 K	AHX 2317
85	160	40	3	325	368	4054.50	4770	3.7	22218 K	AHX 318
	160	52.4	3	365	431	2907.00	3420	5	23218 EKW33	AHX 3218
	190	43	4.5	385	441	3672.00	4320	6.4	21318 K	AHX 318
	190	64	6	629	683	2754.00	3240	9.5	22318 K	AHX 2318
90	170	43	4.5	381	441	3672.00	4320	4.6	22219 K	AHX 319
	200	45	4.5	422	480	3442.50	4050	7.4	21319 K	AHX 319
	200	67	6	689	750	2601.00	3060	11	22319 K	AHX 2319
95	165	52	3	378	480	3060.00	3600	5	23120 EKW33	AHX 3120
	180	46	4.5	427	482	3442.50	4050	5.4	22220 K	AHX 320
	180	60.3	4.5	487	588	2601.00	3060	7.3	23220 EKW33	AHX 3220
	215	47	4.5	425	480	3442.50	4050	9.1	21320 K	AHX 320
	215	73	6	838	931	2295.00	2700	14	22320 K	AHX 2320

CUSCINETTI ORIENTABILI A RULLI SU BUSSOLA DI PRESSIONE
SELF-ALIGNING ROLLER BEARINGS WITH WITHDRAWAL SLEEVE

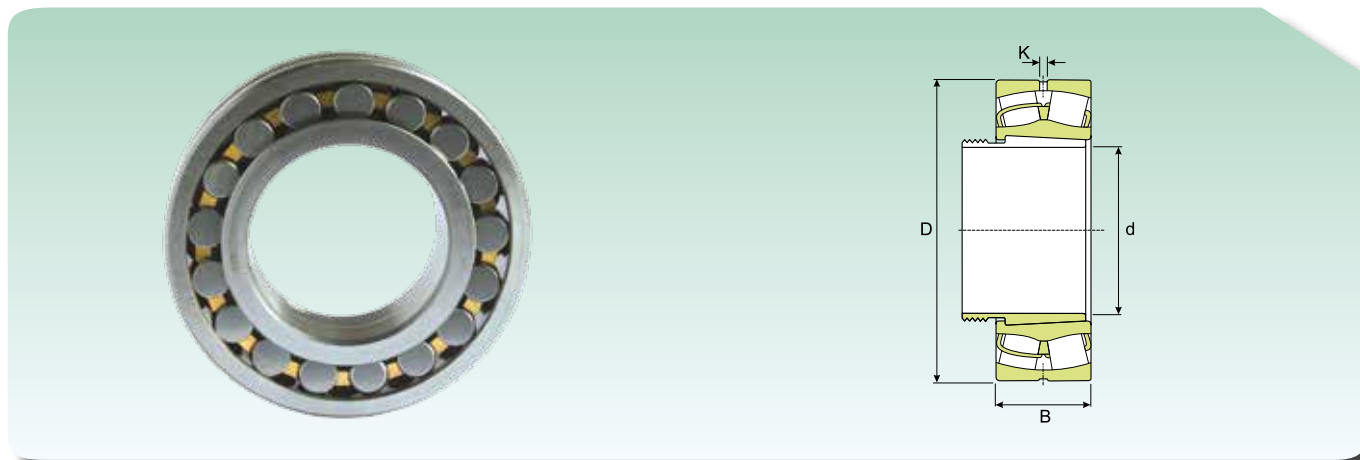


Dimensioni (mm) Dimension (mm)				Coefficiente di carico (KN) Load rating (KN)		Velocità limite (giri/min) Speed limit (Rpm)		Peso (Kg) Weight (Kg)	Sigla Designation	
d (mm)	D (mm)	B (mm)	K (mm)	Dinamico Dynamic C	Statico Static C ₀	Lubrificazione Lubrication			Cuscinetto Bearing	Bussola di pressione Withdrawal sleeve
						Grasso Grease	Olio Oil			
105	170	45	3	319	431	3289.50	3870	4.45	23022 EKW33	AH 322
	180	56	4.5	443	573	2754.00	3240	6.35	23122 EKW33	AHX 3122
	180	69	3	528	735	2295.00	2700	7.7	24122 EK30W33	AH 24122
	200	53	4.5	560	628	3060.00	3600	7.5	22222 EKW33	AHX 3122
	200	69.8	4.5	615	750	2448.00	2880	10.5	23222 EKW33	AHX 3222
240	80	7.5	970	1100	2142.00	2520	19.5	22322 EKW33	AHX 2322	
115	180	46	3	359	500	3060.00	3600	4.8	23024 EKW33	AHX 3024
	180	60	3	447	657	2601.00	3060	5.95	24024 EK30W33	AH 24024
	200	62	4.5	524	681	2601.00	3060	8.7	23124 EKW33	AHX 3124
	200	80	3	666	931	1989.00	2340	10.8	24124 EK30W33	AH 24124
	215	58	6	641	765	2907.00	3420	9.55	22224 EKW33	AHX 3124
	215	76	4.5	721	911	2142.00	2520	13	23224 EKW33	AHX 3224
	260	86	7.5	1003	1098	1989.00	2340	24	22324 EKW33	AHX 2324
125	200	52	4.5	442	598	2754.00	3240	6.75	23026 EKW33	AHX 3026
	200	69	3	558	799	2295.00	2700	8.65	24026 EK30W33	AH 24026
	210	64	4.5	574	764	2448.00	2880	9.6	23126 EKW33	AHX 3126
	210	80	3	687	980	1836.00	2160	11.7	24126 EK30W33	AH 24126
	230	64	6	744	917	2754.00	3240	11.6	22226 EKW33	AHX 3126
	230	80	4.5	812	1039	1989.00	2340	15.5	23226 EKW33	AHX 3226
	280	93	9	1163	1294	1836.00	2160	30.5	22326 EKW33	AHX 2326
135	210	53	4.5	475	666	2601.00	3060	7.35	23028 EKW33	AHX 3028
	210	69	3	586	882	2142.00	2520	9.2	24028 EK30W33	AH 24028
	225	68	4.5	645	882	2142.00	2520	11.5	23128 EKW33	AHX 3128
	225	85	4.5	787	1137	1836.00	2160	14.3	24128 EK30W33	AH 24128
	250	68	6	731	882	2448.00	2880	15	22228 EKW33	AHX 3128
	250	88	6	944	1225	1836.00	2160	20.5	23228 EKW33	AHX 3228
	300	102	9	1345	1529	1683.00	1980	38	22328 EKW33	AHX 2328
145	225	56	4.5	525	735	2448.00	2880	8.85	23030 EKW33	AHX 3030
	225	75	3	666	1019	1989.00	2340	11.3	24030 EK30W33	AH 24030
	250	80	6	868	1176	1989.00	2340	17	23130 EKW33	AHX 3130
	250	100	4.5	1039	1499	1683.00	1980	21	24130 EK30W33	AH 24130
	270	73	7.5	883	1058	2295.00	2700	19	22230 EKW33	AHX 3130
	270	96	6	1115	1431	1683.00	1980	26	23230 EKW33	AHX 3230
	320	108	9	1510	1725	1530.00	1800	45.5	22330 EKW33	AHX 2330
150	240	60	6	600	862	2295.00	2700	11.5	23032 EKW33	AH 3032
	240	80	4.5	770	1176	1836.00	2160	14.8	24032 EK30W33	AH 24032
	270	86	7.5	1005	1343	1836.00	2160	23	23132 EKW33	AH 3132
	270	109	4.5	1200	1725	1453.50	1710	28.5	24132 EK30W33	AH 24132
	290	80	7.5	1030	1264	2142.00	2520	25	22232 EKW33	AH 3132
	290	104	7.5	1260	1627	1683.00	1980	34.5	23232 EKW33	AH 3232
	340	114	9	1655	1921	1453.50	1710	56	22332 EKW33	AH 2332

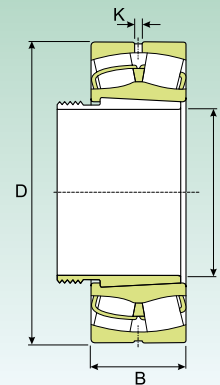
**CUSCINETTI ORIENTABILI A RULLI SU BUSSOLA DI PRESSIONE
 SELF-ALIGNING ROLLER BEARINGS WITH WITHDRAWAL SLEEVE**


Dimensioni (mm) Dimension (mm)				Coefficiente di carico (kN) Load rating (kN)		Velocità limite (giri/min) Speed limit (Rpm)		Peso (Kg) Weight (Kg)	Sigla Designation	
d (mm)	D (mm)	B (mm)	K (mm)	Dinamico Dynamic C	Statico Static C ₀	Lubrificazione Lubrication			Cuscinetto Bearing	Bussola di pressione Withdrawal sleeve
						Grasso Grease	Olio Oil			
160	260	67	6	696	1039	2142.00	2520	15	23034 EK30W33	AH 3034
	260	90	4.5	911	1431	1836.00	2160	20	24034 EK30W33	AH 24034
	280	88	7.5	1019	1470	1836.00	2160	25	23134 EK30W33	AH 3134
	280	109	4.5	1196	1823	1453.50	1710	30	24134 EK30W33	AH 24134
	310	86	9	1162	1445	1989.00	2340	31	22234 EKW33	AH 3134
	310	110	7.5	1372	1891	1530.00	1800	41	23234 EKW33	AH 3234
	360	120	9	1725	2117	1377.00	1620	65	22334 EKW33	AH 2334
170	280	74	7.5	868	1225	1989.00	2340	19.3	23036 EKW33	AH 3036
	280	100	4.5	1115	1695	1683.00	1980	25.7	24036 EK30W33	AH 24036
	300	96	7.5	1244	1725	1683.00	1980	32	23136 EKW33	AH 3136
	300	118	6	1421	2117	1300.50	1530	37	24136 EK30W33	AH 24136
	320	86	9	1198	1533	1989.00	2340	32.5	22236 EKW33	AH 2236
	320	112	7.5	1519	2078	1453.50	1710	43.5	23236 EKW33	AH 3236
	380	126	12	2048	2401	1300.50	1530	76	22336 EKW33	AH 2336
180	290	75	7.5	900	1313	1836.00	2160	21	23038 EKW33	AH 3038
	290	100	4.5	1140	1764	1530.00	1800	27.5	24038 EK30W33	AH 24038
	320	104	7.5	1426	2038	1530.00	1800	38.5	23138 EKW33	AH 3138
	320	128	6	1620	2450	1224.00	1440	46.5	24138 EK30W33	AH 24138
	340	92	9	1315	1666	1836.00	2160	39.5	22238 EKW33	AH 2238
	340	120	9	1718	2352	1377.00	1620	52.5	23238 EKW33	AH 3238
	400	132	12	2195	2597	1224.00	1440	87.5	22338 EKW33	AH 2338
190	310	82	7.5	1035	1499	1683.00	1980	26.3	23040 EKW33	AH 3040
	310	109	6	1328	2078	1453.50	1710	34.5	24040 EK30W33	AH 24040
	340	112	9	1634	2313	1453.50	1710	48.5	23140 EKW33	AH 3140
	340	140	6	1848	2751	1147.50	1350	57.5	24140 EK30W33	AH 24140
	360	98	9	1498	1895	1683.00	1980	47	22240 EKW33	AH 2240
	360	128	9	1915	2646	1300.50	1530	63	23240 EKW33	AH 3240
	420	138	12	2389	2842	1147.50	1350	100	22340 EKW33	AH 2340
200	340	90	7.5	1225	1823	1530.00	1800	36.5	23044 EKW33	AOH 3044
	340	118	6	1600	2548	1300.50	1530	47.5	24044 EK30W33	AOH 24044
	370	120	9	1845	2695	1300.50	1530	61.5	23144 EKW33	AOH 3144
	370	150	6	2169	3283	1071.00	1260	76	24144 EK30W33	AOH 24144
	400	108	9	1800	2313	1530.00	1800	68	22244 EKW33	AOH 2244
	400	144	9	2455	3381	1147.50	1350	93	23244 EKW33	AOH 2344
	460	145	12	2795	3381	1071.00	1260	130	22344 EKW33	AOH 2344
220	360	92	7.5	1315	2038	1453.50	1710	40.5	23048 EKW33	AOH 3048
	360	118	6	1639	2646	1224.00	1440	50.5	24048 EK30W33	AOH 24048
	400	128	9	2149	3136	1224.00	1440	76.5	23148 EKW33	AOH 3148
	400	160	6	2444	3822	994.50	1170	91.5	24148 EK30W33	AOH 24148
	440	120	12	2215	2940	1377.00	1620	95	22248 EKW33	AOH 2248
	440	160	12	2842	4214	994.50	1170	120	23248 EKW33	AOH 2348
	500	155	12	3191	3920	994.50	1170	165	22348 EKW33	AOH 2348

CUSCINETTI ORIENTABILI A RULLI SU BUSSOLA DI PRESSIONE
SELF-ALIGNING ROLLER BEARINGS WITH WITHDRAWAL SLEEVE

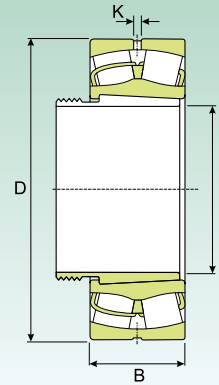


Dimensioni (mm) Dimension (mm)				Coefficiente di carico (KN) Load rating (KN)		Velocità limite (giri/min) Speed limit (Rpm)		Peso (Kg) Weight (Kg)	Sigla Designation	
d (mm)	D (mm)	B (mm)	K (mm)	Dinamico Dynamic C	Statico Static C ₀	Lubrificazione Lubrication			Cuscinetto Bearing	Bussola di pressione Withdrawal sleeve
						Grasso Grease	Olio Oil			
240	400	104	9	1642	2499	1300.50	1530	56.5	23052 EKW33	AOH 3052
	400	140	6	2090	3381	1071.00	1260	75	24052 EK30W33	AOH 24052
	440	144	9	2513	3822	1071.00	1260	105	23152 EKW33	AOH 3152
	440	180	7.5	3025	4704	918.00	1080	120	24152 EK30W33	AOH 24152
	480	130	12	2781	3479	1224.00	1440	120	22252 EKW33	AOH 2252
	480	174	12	3331	4655	918.00	1080	155	23252 EKW33	AOH 2352
	540	165	12	3612	4459	841.50	990	205	22352 EKW33	AOH 2352
260	420	106	9	1759	2793	1224.00	1440	62	23056 EKW33	AOH 3056
	420	140	6	2202	3724	1071.00	1260	79	24056 EK30W33	AOH 24056
	460	146	9	2631	4165	994.50	1170	110	23156 EKW33	AOH 3156
	460	180	7.5	3121	5008	841.50	990	130	24156 EK30W33	AOH 24156
	500	130	12	2748	3675	1147.50	1350	125	22256 EKW33	AOH 2256
	500	176	12	3391	4802	841.50	990	160	23256 EKW33	AOH 2356
	580	175	12	4104	5096	841.50	990	245	22356 EKW33	AOH 2356
280	460	118	9	2191	3381	1147.50	1350	82.5	23060 EKW33	AOH 3060
	460	160	7.5	2691	4655	918.00	1080	110	24060 EK30W33	AOH 24060
	500	160	9	3302	5008	918.00	1080	140	23160 EKW33	AOH 3160
	500	200	7.5	3802	6204	765.00	900	180	24160 EK30W33	AOH 24160
	540	140	12	3192	4165	1071.00	1260	155	22260 EKW33	AOH 2260
	540	192	12	3987	5772	765.00	900	200	23260 EKW33	AOH 3260
300	480	121	9	2302	3724	1071.00	1260	89	23064 EKW33	AOH 3064
	480	160	7.5	2921	5008	918.00	1080	115	24064 EK30W33	AOH 24064
	540	176	12	3881	5880	841.50	990	175	23164 EKW33	AOH 3164
	540	218	9	4321	7004	688.50	810	225	24164 EK30W33	AOH 24164
	580	150	12	3685	4802	994.50	1170	185	22264 EKW33	AOH 2264
	580	208	12	4584	6566	726.75	855	250	23264 EKW33	AOH 3264
320	520	133	12	2795	4481	994.50	1170	120	23068 EKW33	AOH 3068
	520	180	9	3584	6076	841.50	990	160	24068 EK30W33	AOH 24068
	580	190	12	4204	6664	765.00	900	225	23168 EKW33	AOH 3168
	580	243	9	5397	8504	650.25	765	295	24168 EK30W33	AOH 24168
	620	224	12	5304	7644	612.00	720	315	23268 EKW33	AOH 3268
340	540	134	12	2802	4704	918.00	1080	125	23072 EKW33	AOH 3072
	540	180	9	3651	6419	765.00	900	165	24072 EK30W33	AOH 24072
	600	192	12	4480	6811	765.00	900	235	23172 EKW33	AOH 3172
	600	243	9	5679	9195	612.00	720	295	24172 EK30W33	AOH 24172
	650	170	12	4380	6076	650.25	765	275	22272 EKW33	AOH 3172
	650	232	12	5585	8134	573.75	675	345	23272 EKW33	AOH 3272
360	560	135	12	2939	4900	918.00	1080	135	23076 EKW33	AOH 3076
	560	180	9	3715	6664	726.75	855	170	24076 EK30W33	AOH 24076
	620	194	12	4885	6958	765.00	900	250	23176 EKW33	AOH 3176
	620	243	9	5868	9669	650.25	765	325	24176 EK30W33	AOH 24176
	680	240	12	6094	9015	573.75	675	390	23276 EKW33	AOH 3276

**CUSCINETTI ORIENTABILI A RULLI SU BUSSOLA DI PRESSIONE
SELF-ALIGNING ROLLER BEARINGS WITH WITHDRAWAL SLEEVE**


Dimensioni (mm) Dimension (mm)				Coefficiente di carico (KN) Load rating (KN)		Velocità limite (giri/min) Speed limit (Rpm)		Peso (Kg) Weight (Kg)	Sigla Designation	
d (mm)	D (mm)	B (mm)	K (mm)	Dinamico Dynamic C	Statico Static C ₀	Lubrificazione Lubrication			Cuscinetto Bearing	Bussola di pressione Withdrawal sleeve
						Grasso Grease	Olio Oil			
380	600	148	12	3451	5705	841.50	990	165	23080 EKW33	AOH 3080
	600	200	12	4444	7840	688.50	810	220	24080 EK30W33	AOH 24080
	650	200	12	4775	7497	726.75	855	290	23180 EKW33	AOH 3180
	650	250	12	6248	10388	612.00	720	365	24180 EK30W33	AOH 24180
	720	256	12	6790	10192	512.55	603	470	23280 EKW33	AOH 3280
	820	243	12	7745	10200	573.75	675	675	22380 EKW33	AOH 3280
400	620	150	12	3495	5880	841.50	990	175	23084 EKW33	AOH 3084
	620	200	12	4550	8134	688.50	810	230	24084 EK30W33	AOH 24084
	700	224	12	5804	9114	688.50	810	375	23184 EKW33	AOH 3184
	700	280	12	7425	12348	535.50	630	470	24184 EK30W33	AOH 24184
	760	272	12	7525	11368	481.95	567	550	23284 EKW33	AOH 3284
420	650	157	12	3785	6419	765.00	900	200	23088 EKW33	AOHX 3088
	650	212	12	4895	8967	650.25	765	275	24088 EK30W33	AOH 24088
	720	226	12	6141	9800	650.25	765	380	23188 EKW33	AOHX 3188
	720	280	12	7666	12950	535.50	630	490	24188 EK30W33	AOH 24188
	790	280	12	8000	12250	459.00	540	620	23288 EKW33	AOHX 3288
440	680	163	12	3988	6811	726.75	855	225	23092 EKW33	AOHX 3092
	680	218	12	5315	9800	612.00	720	300	24092 EK30W33	AOH 24092
	760	240	12	6650	10584	612.00	720	465	23192 EKW33	AOHX 3192
	760	300	12	8500	14308	512.55	603	590	24192 EK30W33	AOH 24192
	830	296	12	8795	13426	428.40	504	725	23292 EKW33	AOHX 3292
460	700	165	12	3924	6664	726.75	855	235	23096 EKW33	AOHX 3096
	700	218	12	5468	10192	573.75	675	310	24096 EK30W33	AOH 24096
	790	248	12	7245	11760	573.75	675	515	23196 EKW33	AOHX 3196
	790	308	12	9015	15288	481.95	567	635	24196 EK30W33	AOH 24196
	870	310	12	9679	14700	405.45	477	860	23296 EKW33	AOHX 3296
480	720	167	12	4269	7644	688.50	810	250	230/500 EKW33	AOHX 30/500
	720	218	12	5695	10780	535.50	630	325	240/500 EK30W33	AOH 240/500
	830	264	12	7945	12642	535.50	630	610	231/500 EKW33	AOHX 31/500
	830	325	12	9991	16660	459.00	540	735	241/500 EK30W33	AOH 241/500
	920	336	12	10951	16954	382.50	450	1020	232/500 EKW33	AOHX 32/500
500	780	185	12	5184	9114	612.00	720	365	230/530 EKW33	AOH 30/530
	780	250	12	6851	12936	512.55	603	455	240/530 EK30W33	AOH 240/530
	870	272	12	8401	13720	512.55	603	720	231/530 EKW33	AOH 31/530
	870	335	12	10704	18620	428.40	504	885	241/530 EK30W33	AOH 241/530
	980	355	12	13019	19992	367.20	432	1290	232/530 EKW33	AOH 32/530
530	820	195	12	5666	9996	540	675	430	230/560 EKW33	AOH 30/560
	820	258	12	7485	14308	453.6	567	515	240/560 EK30W33	AOH 240/560
	920	280	12	9406	15680	453.6	567	850	231/560 EKW33	AOH 31/560
	920	355	12	12115	19600	360	450	1060	241/560 EK30W33	AOH 241/560
	1030	365	12	13617	21560	309.6	387	1500	232/560 EKW33	AOH 32/560
570	870	200	12	6154	11172	504	630	480	230/600 EKW33	AOH 30/600
	870	272	12	8465	16660	403.2	504	600	240/600 EK30W33	AOH 240/600
	980	300	12	10591	17640	403.2	504	1010	231/600 EKW33	AOH 31/600

CUSCINETTI ORIENTABILI A RULLI SU BUSSOLA DI PRESSIONE
SELF-ALIGNING ROLLER BEARINGS WITH WITHDRAWAL SLEEVE



Dimensioni (mm) Dimension (mm)				Coefficiente di carico (KN) Load rating (KN)		Velocità limite (giri/min) Speed limit (Rpm)		Peso (Kg) Weight (Kg)	Sigla Designation	
d (mm)	D (mm)	B (mm)	K (mm)	Dinamico Dynamic C	Statico Static C ₀	Lubrificazione Lubrication			Cuscinetto Bearing	Bussola di pressione Withdrawal sleeve
						Grasso Grease	Olio Oil			
	980	375	12	13336	23128	345.6	432	1290	241/600 EK30W33	AOH 241/600
	1090	388	12	15330	24990	288	360	1760	232/600 EKW33	AOH 32/600
600	920	212	12	6795	12250	482.4	603	575	230/630 EKW33	AOH 30/630
	920	290	12	8989	17640	381.6	477	730	240/630 EK30W33	AOH 240/630
	1030	315	12	12450	20384	381.6	477	1190	231/630 EKW33	AOH 31/630
	1030	400	12	14850	26460	324	405	1500	241/630 EK30W33	AOH 241/630
630	980	230	12	7816	14308	432	540	720	230/670 EKW33	AOH 30/670
	980	308	12	10216	19992	360	450	900	240/670 EK30W33	AOH 240/670
	1030	315	12	12904	21952	381.6	477	1430	231/670 EKW33	AOH 31/670
	1090	412	12	16250	28420	288	360	1730	241/670 EK30W33	AOH 241/670
	1220	438	12	18395	29890	259.2	324	2500	232/670 EKW33	AOH 32/670
670	1030	236	12	8513	15974	403.2	504	800	230/710 EKW33	AOH 30/710
	1030	315	12	10975	22344	324	405	1010	240/710 EK30W33	AOH 240/710
	1150	345	12	14513	25480	324	405	1650	231/710 EKW33	AOH 31/710
	1150	438	12	17681	31850	273.6	342	2040	241/710 EK30W33	AOH 241/710
	1280	450	12	20000	33810	230.4	288	2810	232/710 EKW33	AOH 32/710
710	1090	250	12	9895	18228	381.6	477	950	230/750 EKW33	AOH 30/750
	1090	335	12	12014	23200	309.6	387	1200	240/750 EK30W33	AOH 240/750
	1220	365	12	16209	28420	309.6	387	1930	231/750 EKW33	AOH 31/750
	1220	475	12	20013	36750	259.2	324	2280	241/750 EK30W33	AOH 241/750
	1360	475	12	22044	35770	216	270	3280	232/750 EKW33	AOH 32/750
750	1150	258	12	10185	19600	345.6	432	1100	230/800 EKW33	AOH 30/800
	1150	345	12	13199	27930	288	360	1380	240/800 EK30W33	AOH 240/800
	1280	375	12	17887	30870	288	360	2200	231/800 EK30W33	AOH 31/800
	1280	475	12	21390	39690	230.4	288	2540	241/800 EKW33	AOH 241/800
800	1220	272	12	10991	21168	324	405	1250	230/850 EKW33	AOH 30/850
	1220	365	12	14956	30968	259.2	324	1670	240/850 EK30W33	AOH 240/850
	1360	400	12	15778	33810	259.2	324	2500	231/850 EKW33	AOH 31/850
	1360	500	12	23467	44100	216	270	3050	241/850 EK30W33	AOH 241/850
850	1280	280	12	11981	22736	288	360	1450	230/900 EKW33	AOH 30/900
	1280	375	12	15915	33810	244.8	306	1850	240/900 EK30W33	AOH 240/900
	1420	515	12	24990	48020	201.6	252	3700	241/900 EK30W33	AOH 241/900
900	1360	300	12	14041	27930	273.6	342	1720	230/950 EKW33	AOH 30/950
	1360	412	12	17505	33220	216	270	2300	240/950 EK30W33	AOH 240/950
	1500	545	12	27466	53900	187.2	234	3950	241/950 EK30W33	AOH 241/950
950	1420	308	12	12446	29890	259.2	324	1900	230/1000 EKW33	AOH 30/1000
	1420	412	12	18280	39690	201.6	252	2500	240/1000 EK30W33	AOH 240/1000
	1580	462	12	25194	47040	201.6	252	3950	231/1000 EKW33	AOH 31/1000
	1580	580	12	30915	60760	172.8	216	4800	241/1000 EK30W33	AOH 241/1000
1000	1500	325	12	13524	33320	230.4	288	2600	230/1060 EKW33	AOH 30/1060
	1500	438	12	20521	44590	187.2	234	2950	240/1060 EK30W33	AOH 240/1060