



CATENE ACCIAIO INOX AISI 304
CATENE CON TRATTAMENTI SUPERFICIALI
AISI 304 STAINLESS STEEL ROLLER CHAINS
COATED/SURFACE TREATED CHAINS

Catene nichelate e catene zincate / *Nickel-plated Chains and Zinc-plated Chains*

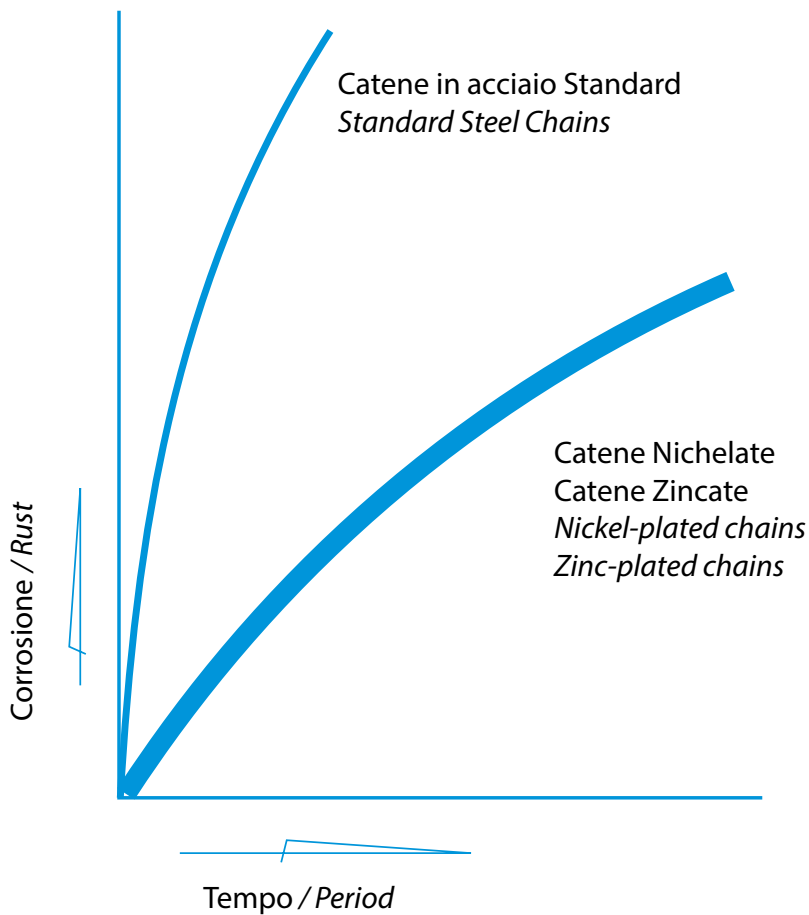
Applicazioni:

Adatte ad ambienti in cui gli agenti contaminanti si depositano e si accumulano, esposte al contatto con l'acqua per il settore alimentare, tessile, cartario, automazione industriale e ovunque siano richieste resistenza alle aggressioni ambientali e affidabilità.

Applications:

Suitable for environments into which moisture accumulates, power transmission in water, food processing equipment, office printing and textile machines, as well as places where resistance to environmental attacks and reliability are required.

Chain performance refer to ISO JIS, ANSI standard.



CARATTERISTICHE:

- **Colore:** Bianco chiaro
- **Resistenza alla Temperatura:** trattamento superficiale fino a 250° C
- **Carico Ammissibile:** Pari alle Catene standard Maggiore resistenza rispetto alle catene Inox, nessun fenomeno di infrangimento in presenza di idrogeno
- **Resistenza alla usura:** pari alle catene standard
- **Resistenza alla Ossidazione:** In confronto ai trattamenti superficiali elettrochimici

CATENE	METODO	DURATA
TRATT. SUP. ELETTROCHIMICO	NEBBIA SALINA	48-96
CATENA PROTETTA	NEBBIA SALINA	300-1000

FEATURE:

- **Color:** light white
- **Temperature tolerance:** high temperature resistance of the chain coat up to 250° C
- **Allowable load:** same as standard chains (higher strength than stainless steel chains, no hydrogen breaking like electroplate chains)
- **Wear resistance:** Same as normal chains
- **Antirust:** compared with electroplate chains

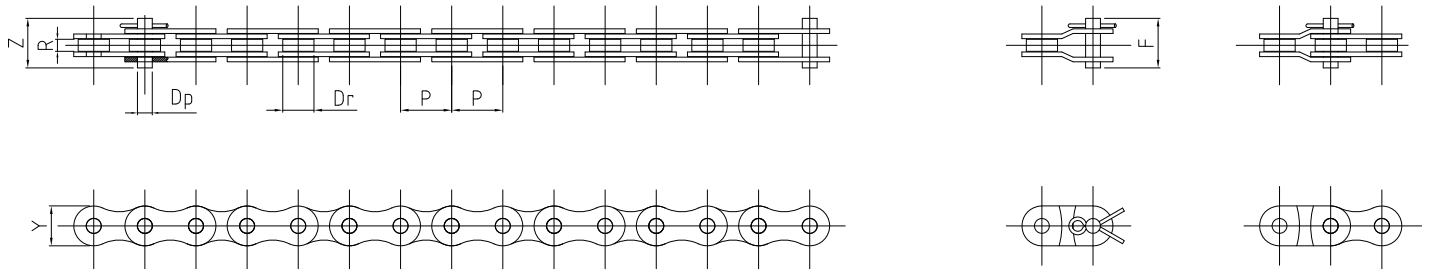
ITEMS	ANTIRUST TEST METHOD	DURABLE TIME (HOUR)
ELECTROPLATE CHAIN	SALT FOG	48-96
HIGHGUARD CHAIN	SALT FOG	300-1000

Catene da trasporto leggero

Trattasi di catene trattate superficialmente e con caratteristiche di resistenza all'ossidazione ed alla corrosione, assai vicine, come efficacia, alla qualità delle catene INOX, rispetto alle quali però, presentano carichi di rottura e di lavoro, assai più elevate, uguali, per resistenza, a quelle in acciaio legato e/o al carbonio. Dette catene, sono da impiegarsi in condizioni ambientali assai difficili, in presenza di agenti aggressivi, e nei casi in cui, la sollecitazione alla resistenza ad attacchi di liquidi ed acidi, renda necessaria una protezione superficiale dei componenti, pur non alterandone le connotazioni tecnomeccaniche.

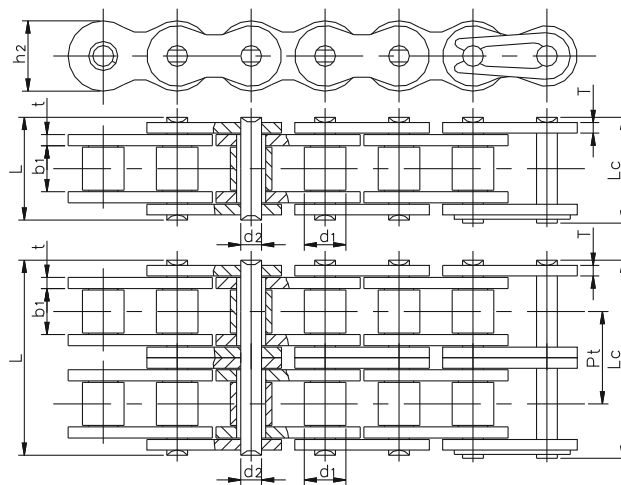
Light transport chains

These chains are treated on the surface to increase their resistance to corrosion and oxidation, becoming in this way very similar to stainless steel types. The most important difference from those is their greater capacity of standing higher breaking load and loads, quality that usually belong to steel and/or carbon chains. These chains are usually assembled in very difficult working conditions, where aggressive agents are present or when the resistance against acids and liquids involves a superficial protection of components (technomechanics characteristics do not change).

Catene a rulli, con **trattamento di nichelatura superficiale** / *Roller Chains, with **Superficial Nickel-plated Treatment***

SERIE EUROPEA ISO-DIN / ISO-DIN EUROPEAN SERIES

Catena Chain	Passo Pitch	Diam. rullo max Max roller diam.	Largh. Int. min. Width between plates	Diam. perno max Max pin diam.	Altezza piastra max Inner plate depth	Largh. catena ribad. max Width over connecting pins	Ingombro catena max Width over bearing pins	Superf. di lavoro Working surface	Carico medio di rottura Medium breaking load	Peso al metro Approx. weight
	P	Dr	R	Dp	Y	Z	F			
	mm	mm	mm	mm	mm	mm	mm	mm ²	N	kg/m
06B1NP	9.525	6.35	5.72	3.28	8.26	12.8	19	28	9.500	0.39
08B1NP	12.70	8.51	7.75	4.45	11.81	16.5	24	50	17.950	0.69
10B1NP	15.875	10.16	9.65	5.08	14.73	19.1	27	69	22.900	0.88
12B1NP	19.05	12.07	11.68	5.72	16.13	22.5	30	89	27.000	1.21
16B1NP	24.40	15.88	17.02	8.28	21.08	34.6	46	210	61.000	2.62

Catene a rulli esenti da lubrificazione ASA / Lubrication free Roller Chains ANSI



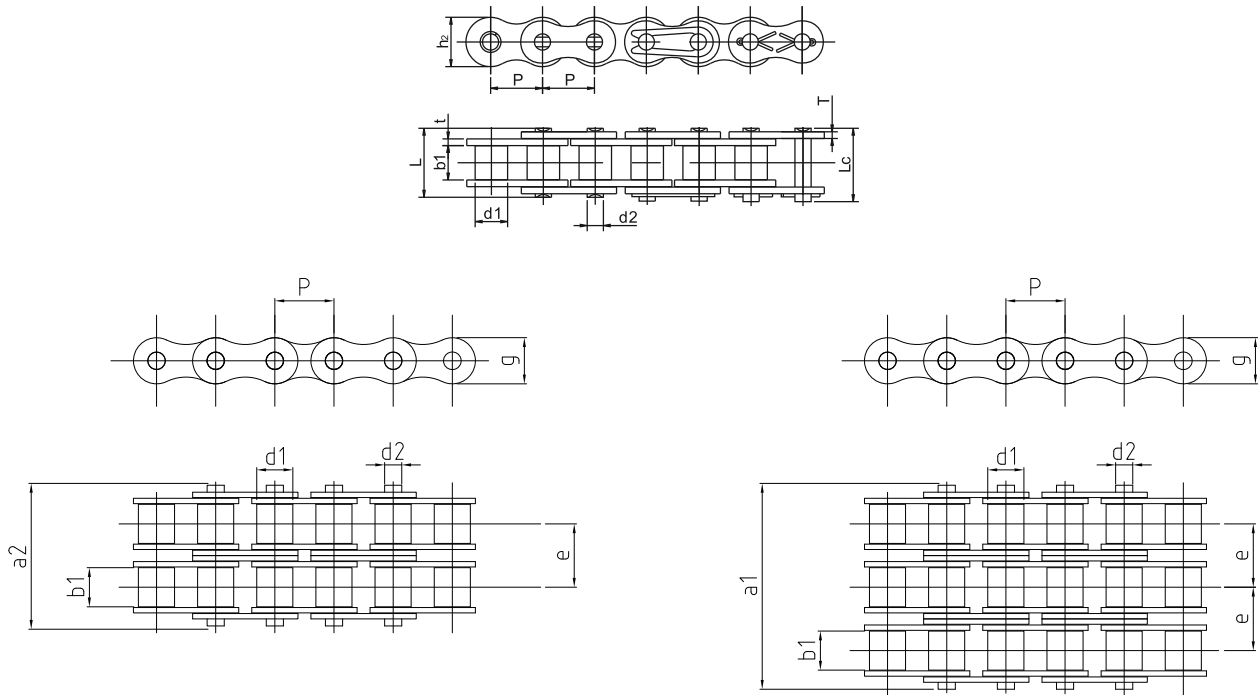
SERIE AMERICANA ASA / ANSI AMERICAN SERIES

Catena Chain	Passo Pitch	Diam. Rullo Roller diameter	Larghezza interna Width between inner plates	Diametro Perno Pin diameter	Largh. catena ribadita Riveted chain width		Altezza piastra Plate depth	Spessore piastra Plate thickness	Carico di rottura min. Ultimate tensile strength	Carico di rottura medio Average tensile strength	Peso al metro Weight per meter
	P	d _{1 max}	b _{1 min}	d _{2 max}	L max	Lc max	h _{2 max}	t/T	Pt	Q min	q ≈
	mm	mm	mm	mm	mm	mm	mm	mm	mm	kN/LB	kg/m
08BSLR	12.70	8.51	7.75	4.45	16.7	18.2	11.80	1.6	-	18.0/4091	0.69
08BSLRF1	12.70	8.51	7.75	4.45	17.3	18.7	11.80	1.6	-	18.0/4091	0.72
10BSLR	15.875	10.16	9.65	5.08	19.5	20.9	14.70	1.7	-	22.4/5091	0.93
10BSLRF1	15.875	10.16	9.65	5.08	19.9	21.6	14.70	1.7	-	22.4/5091	0.97
12BSLR	19.05	12.07	11.68	5.72	22.5	24.2	16.00	1.85	-	29.0/6591	1.15
12BSLRF1	19.05	12.07	11.68	5.72	22.9	24.7	16.00	1.85	-	29.0/6591	1.19
16BSLR	25.40	15.88	17.02	8.28	36.1	37.4	21.00	4.15/3.10	-	60.0/13636	2.71
16BSLRF1	25.40	15.88	17.02	8.28	36.7	39.7	21.00	4.15/3.10	-	60.0/13636	2.73
40SLR	12.70	7.95	7.85	3.96	16.6	17.8	12.00	1.5	-	14.1/3205	0.62
50SLR	15.875	10.16	9.40	5.08	20.7	22.2	15.09	2.03	-	22.0/5045	1.02
60SLR	19.05	11.91	12.57	5.94	27.5	29.3	18.00	3.25/3.42	-	34.2/7772	1.65
80SLR	25.40	15.88	15.75	7.92	32.7	35.0	24.00	3.25	-	56.7/12886	2.60
08SLR2	12.70	8.51	7.75	4.45	31.2	32.2	11.80	1.6	13.92	32.0/7273	1.34
10BSLR2	15.875	10.16	9.65	5.08	36.1	37.5	14.70	1.7	16.59	44.5/10114	1.84
12BSLR2	19.05	12.07	11.68	5.72	42.0	43.6	16.00	1.85	19.46	57.8/13136	2.31
16BSLR2	25.40	15.88	17.02	8.28	68.0	69.3	21.00	4.15/3.10	31.88	106.0/24091	5.42
40SLR2	12.70	7.95	7.85	3.96	31.0	32.2	12.00	1.5	14.38	28.2/6409	1.12
50SLR2	15.875	10.16	9.40	5.08	38.9	40.4	15.09	2.03	18.11	44.4/10091	2.00
60SLR2	19.05	11.91	12.57	5.94	50.3	52.1	18.00	3.25/3.42	22.78	68.4/15544	3.21
80SLR2	25.40	15.88	15.75	7.92	62.7	64.3	24.00	3.25	29.29	113.4/25773	5.15

Catene in acciaio inox AISI 304 / AISI 304 Stainless Steel Chains

Le Catene in Acciaio inossidabile sono adatte ad applicazioni che richiedono elevata resistenza termica (da -20°C a +400° C), resistenza alla corrosione e pulizia. Possono essere dotate di attacchi a seconda dell'applicazione

Stainless Steel Chains are suitable for applications that require high temperature resistance (-20° C +400° C), corrosion resistance and cleanliness. They can also be equipped with attachments for conveyor purpose.



Catena a rulli singola / Single strand roller Chain

Catena Chain	Passo Pitch	Diam. Rullo Roller diameter	Larghezza interna Width between inner plates	Diametro Perno Pin diameter	Largh. catena ribadita Riveted chain width		Altezza piastra Plate depth	Spessore piastra Plate thickness	Carico di rottura min. Ultimate tensile strength	Peso al metro Weight per meter
	P	d _{1 max}	b _{1 min}	d _{2 max}	L max	Lc max	h _{2 max}	t/T	Q min	q ≈
	mm	mm	mm	mm	mm	mm	mm	mm	kN	kg/m
*25A1 INOX	6.350	3.30	3.18	2.31	7.90	8.40	6.00	0.80	2.50	0.15
*35A1 INOX	9.525	5.08	4.77	3.58	12.40	13.17	9.00	1.30	5.50	0.33
40A1 INOX	12.70	7.95	7.85	3.96	16.60	17.80	12.20	1.50	9.70	0.63
41A1 INOX	12.70	7.77	6.25	3.58	13.75	15.00	9.910	1.30	6.00	0.46
50A1 INOX	15.875	10.16	9.40	5.08	20.70	22.20	15.09	2.06	15.3	1.03
60A1 INOX	19.05	11.91	12.57	5.94	25.90	27.70	18.00	2.44	21.8	1.51
80A1 INOX	25.40	15.88	15.75	7.92	32.70	35.00	24.00	3.26	38.9	2.60
100A1 INOX	31.75	19.05	18.90	9.53	40.40	44.70	30.00	4.00	59.0	3.94
120A1 INOX	38.10	22.23	25.22	11.10	50.30	54.30	35.70	4.80	72.5	5.72
140A1 INOX	44.45	25.40	25.22	12.70	54.40	59.00	41.00	5.60	94.0	7.70

Catene a Bussole: d1 indica il diametro esterno della bussola / Bushing: d1 the table indicates the external diameter of the bushing

Catene a Piastre diritte: per le dimensioni delle catene a passo lungo in acciaio inox, vedere le catene standard; per le dimensioni delle catene doppie e triple in acciaio inox vedere le catene standard.

Straight side plates chains: for the dimensions of double pitch stainless steel chains refer to standard chains; for the dimensions of double strand & triple strand stainless steel chains refer to standard chains.

Catene a rulli in acciaio inox AISI 304 / AISI 304 Stainless Steel Roller Chains

Catena a rulli singola - DIN 8187 AISI 304 / Single strand roller Chain - DIN 8187 AISI 304

Catena Chain	Passo Pitch	Diam. Rullo Roller diameter	Larghezza interna Width between inner plates	Diametro Perno Pin diameter	Largh. catena ribadita Riveted chain width		Altezza piastra Plate depth	Spessore piastra Plate thickness	Carico di rottura min. Ultimate tensile strength	Peso al metro Weight per meter
	P	d ₁ max	b ₁ min	d ₂ max	L max	Lc max	h ₂ max	t/T	Q min	q ≈
	mm	mm	mm	mm	mm	mm	mm	mm	kN	kg/m
04B1 INOX	6.00	4.00	2.80	1.85	6.80	7.80	5.00	0.60	2.00	0.11
05B1 INOX	8.00	5.00	3.00	2.31	8.20	8.90	7.10	0.80	3.50	0.20
06B1 INOX	9.525	6.35	5.72	3.28	13.15	14.10	8.20	1.30	6.20	0.41
08B1 INOX	12.70	8.51	7.75	4.45	16.70	18.20	11.80	1.60	12.0	0.70
10B1 INOX	15.875	10.16	9.65	5.08	19.50	20.90	14.70	1.70	14.5	0.94
12B1 INOX	19.05	12.07	11.68	5.72	22.50	24.20	16.00	1.85	18.5	1.16
16B1 INOX	25.40	15.88	17.02	8.28	36.10	37.40	21.00	4.15/3.10	40.0	2.13
20B1 INOX	31.75	19.05	19.56	10.19	41.30	45.00	26.40	4.5/3.5	59.0	3.73
24B1 INOX	38.10	25.40	25.40	14.63	53.40	57.80	33.20	6.0/4.8	104.0	7.20
32B1 INOX	50.80	29.21	30.99	17.81	66.00	71.00	42.00	7.0/6.0	150.0	10.22

Catene a Bussole: d1 indica il diametro esterno della bussola / Bushing; d1 the table indicates the external diameter of the bushing

Catene a Piastre diritte: per le dimensioni delle catene a passo lungo in acciaio inox, vedere le catene standard; per le dimensioni delle catene doppie e triple in acciaio inox vedere le catene standard.

Straight side plates chains: for the dimensions of double pitch stainless steel chains refer to standard chains; for the dimensions of double strand & triple strand stainless steel chains refer to standard chains.

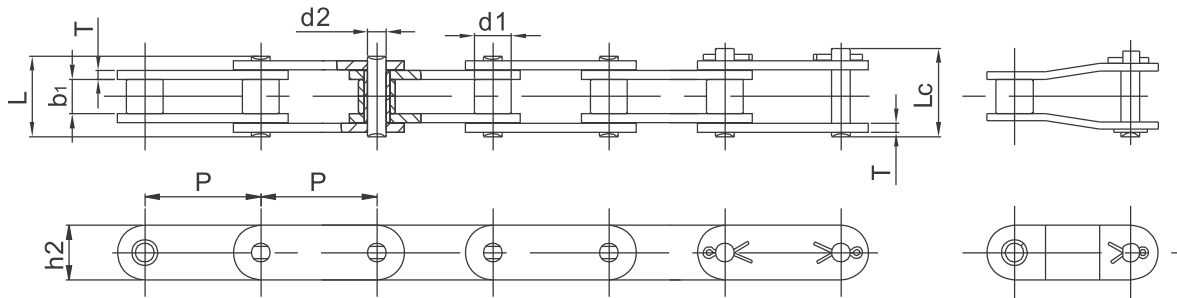
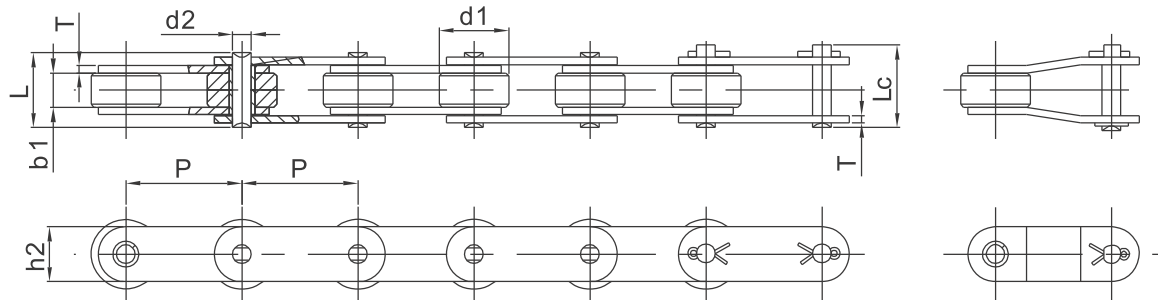
Catena a rulli doppia - DIN 8187 AISI 304 / Double strand roller Chain - DIN 8187 AISI 304

Catena Chain	P		b ₁ mm min	d ₂ mm	d ₁ min max	a2 mm max	g min max	e mm	FB mm N	q kg/m ≈
	mm	inch								
06B2 INOX	9,525	3/8"	5,72	3,28	6,35	23,8	8,26	10,24	10.000	0,78
08B2 INOX	12,70	1/2"	7,75	4,45	8,51	21,0	11,81	13,92	20.000	1,35
10B2 INOX	15,875	5/8"	9,65	5,08	10,16	36,2	14,73	16,59	24.000	1,85
12B2 INOX	19,05	3/4"	11,68	5,72	12,07	42,2	16,13	19,46	31.000	2,50
16B2 INOX	24,40	1"	17,02	8,28	15,88	68,0	21,08	31,88	68.000	5,40

Catena a rulli tripla - DIN 8187 AISI 304 / Triple strand roller Chain - DIN 8187 AISI 304

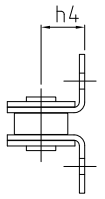
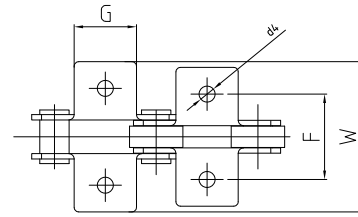
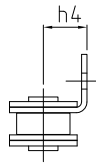
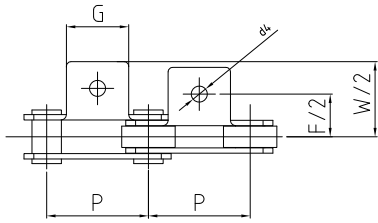
Catena Chain	P		b ₁ mm min	d ₂ mm	d ₁ min max	a2 mm max	g min max	e mm	FB mm N	q kg/m ≈
	mm	inch								
06B3 INOX	9,525	3/8"	5,72	3,28	6,35	34,0	8,26	10,24	14.000	1,2
08B3 INOX	12,70	1/2"	7,75	4,45	8,51	44,9	11,81	13,92	30.000	2,0
10B3 INOX	15,875	5/8"	9,65	5,08	10,16	52,8	14,73	16,59	38.000	2,8
12B3 INOX	19,05	3/4"	11,68	5,72	12,07	61,7	16,13	19,46	52.000	3,8
16B3 INOX	24,40	1"	17,02	8,28	15,88	99,9	21,08	31,88	99.000	8,0

Catene da trasporto a passo lungo in **acciaio inox** / *Double Pitch **Stainless Steel** Conveyor Chains*

 Rullo Standard / *Small Roller type*

 Rullo Maggiorato / *Large Roller type*


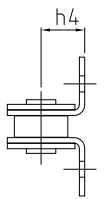
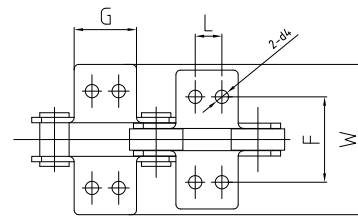
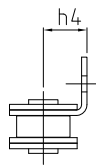
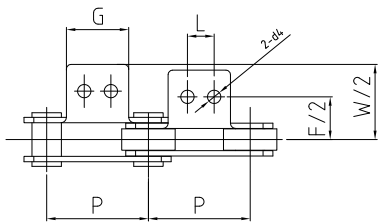
Catena Chain	Passo Pitch	Diam. Rullo Roller diameter	Larghezza interna Width between inner plates	Diametro Perno Pin diameter	Largh. catena ribadita Riveted chain width		Altezza piastra Plate depth	Spessore piastra Plate thickness	Carico di rottura min. Ultimate tensile strength	Peso al metro Weight per meter
	P	d ₁ max	b ₁ min	d ₂ max	L max	Lc max	h ₂ max	T	Q min	q ≈
	mm	mm	mm	mm	mm	mm	mm	mm	kN	kg/m
C2040 INOX C2042 INOX	25.40	7.95 15.88	7.85	3.96	16.6	17.8	12.0	1.50	9.6	0.51 0.85
C2040H INOX	25.40	7.95	7.85	3.96	18.8	19.9	12.0	2.03	9.6	0.66
C208B INOX C208BL INOX	25.40	8.51 15.88	7.75	4.45	16.7	18.2	11.8	1.60	12.0	0.56 0.90
C2050 INOX C2052 INOX	31.75	10.16 19.05	9.40	5.08	20.7	22.2	15.0	2.03	15.2	0.79 1.29
C2060 INOX C2062 INOX	38.10	11.91 22.23	12.57	5.94	25.9	27.7	18.0	2.42	21.7	1.13 1.63
C2060H INOX C2062H INOX	38.10	11.91 22.23	12.57	5.94	29.2	31.6	18.0	3.25	21.7	1.46 3.10
C2080 INOX C2082 INOX	50.80	15.88 28.58	15.75	7.92	32.7	36.5	24.0	3.25	38.9	2.11 3.16
C2080H INOX C2082H INOX	50.80	15.88 28.58	15.75	7.92	36.2	39.4	24.0	4.0	38.9	2.57 3.63
C2100 INOX C2102 INOX	63.50	19.05 39.67	18.90	9.53	40.4	44.7	30.0	4.0	60.0	3.05 4.89
C2100H INOX C2102H INOX	63.50	19.05 39.67	18.90	9.53	43.6	46.9	30.0	4.8	60.0	3.61 5.45

Catene da trasporto a passo lungo in acciaio inox **con attacchi** / Double-Pitch Stainless Steel Conveyor Chains **with Attachments**

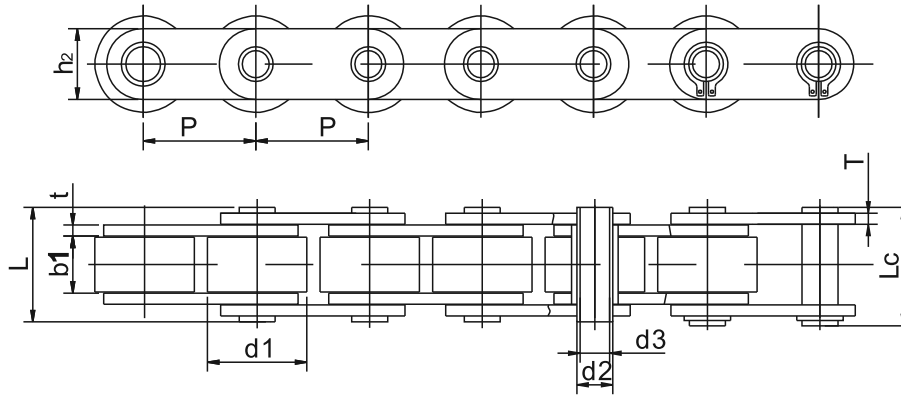


A-2

K-2



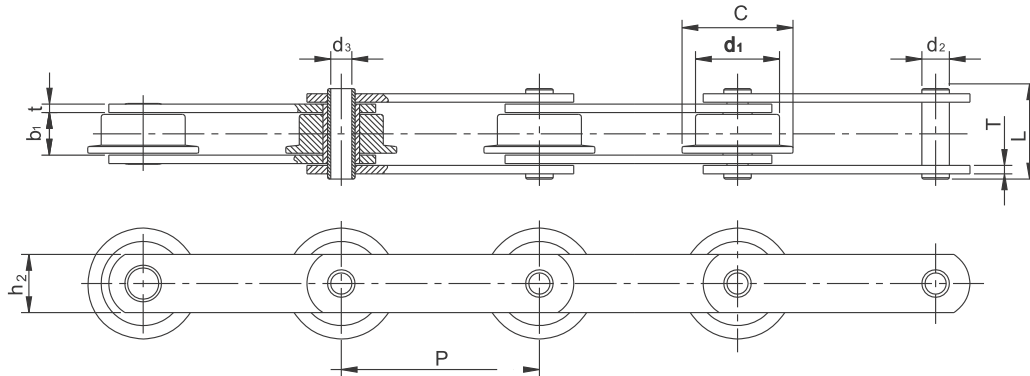
Catena Chain	P	G	L	F	W	h4	d4
	mm	mm	mm	mm	mm	mm	mm
C2040 INOX C2042 INOX	25.40	19.1	9.5	25.4	39.6	9.1	3.4
C208B INOX C208BL INOX	25.40	23.2	12.7	25.4	39.6	9.1	4.5
C2050 INOX C2052 INOX	31.75	23.8	11.9	31.8	49.0	11.1	5.5
C2060 INOX C2062 INOX	38.10	28.6	14.3	42.9	67.8	14.7	5.5
C2060H INOX C2062H INOX	38.10	28.6	14.3	42.9	67.8	14.7	5.5
C2080 INOX C2082 INOX	50.80	38.1	19.1	55.6	87.8	19.1	6.8
C2080H INOX C2082H INOX	50.80	38.1	19.1	55.6	87.8	19.1	6.8
C2100 INOX C2102 INOX	63.50	47.6	23.8	66.6	107.5	23.4	9.5
C2100H INOX C2102H INOX	63.50	47.6	23.8	66.6	107.5	23.4	9.2

Catena da trasporto a passo lungo, **perni forati in acciaio inox** / *Double pitch **Stainless Steel Hollow Pins** Chains*


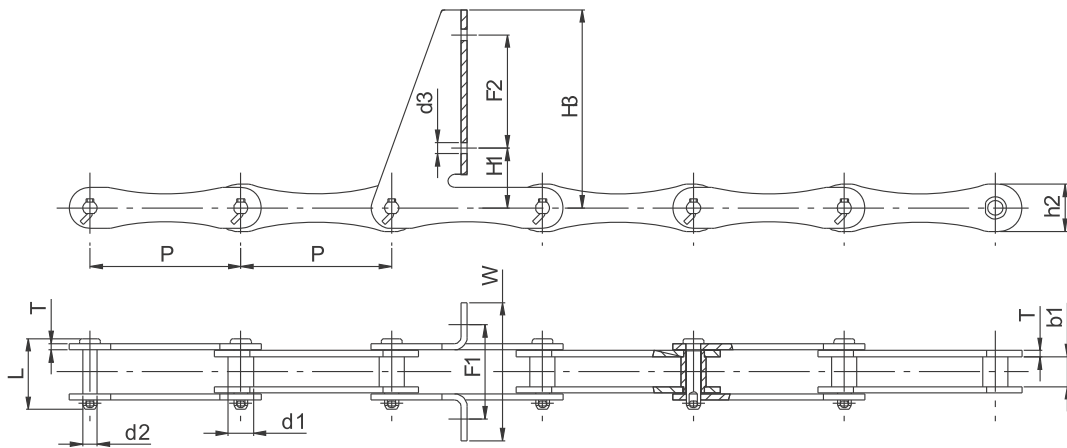
Catena Chain	Passo Pitch	Diam. Rullo Roller diameter	Larghezza interna Width between inner plates	Diametro Perno Pin diameter		Largh. catena ribadita Riveted chain width		Altezza piastra Plate depth	Spessore piastra Plate thickness	Carico di rottura min. Ultimate tensile strength	Peso al metro Weight per meter
	P	d ₁ max	b ₁ min	d ₂ max	d ₃ max	L max	Lc max	h ₂ max	t/T	Q min	q ≈
	mm	mm	mm	mm	mm	mm	mm	mm	mm	kN	kg/m
C2042HP INOX	25.40	15.88	7.85	5.63	4.00	16.5	17.6	12.0	1.50	7.70	0.79
C2052HP INOX	31.75	19.05	9.53	7.22	5.12	20.5	21.8	15.0	2.03	14.3	1.27
C2062HP INOX	38.10	22.23	12.70	8.31	6.00	25.8	26.8	17.0	2.42	16.8	1.74
C2082HP INOX	50.80	28.58	15.75	11.40	8.05	32.4	33.8	24.0	3.25	35.0	2.86
C2042HHP INOX	25.40	15.88	7.85	5.63	4.00	18.8	19.9	12.0	2.03	7.70	0.96
C2052HHP INOX	31.75	19.05	9.53	7.22	5.12	22.1	23.4	15.0	2.42	14.3	1.46
C2062HHP INOX	38.10	22.23	12.70	8.31	6.00	29.2	30.2	17.0	3.25	16.8	2.02
C2082HHP INOX	50.80	28.58	15.75	11.40	8.05	36.2	37.6	24.0	4.00	35.0	3.30
*P200HBa INOX F	200.0	90.00	32.98	43.00	35.20	-	59.0	64.0	4.00	30.0	9.40

* Nota: Rullo flangiato / Note: Flanged roller

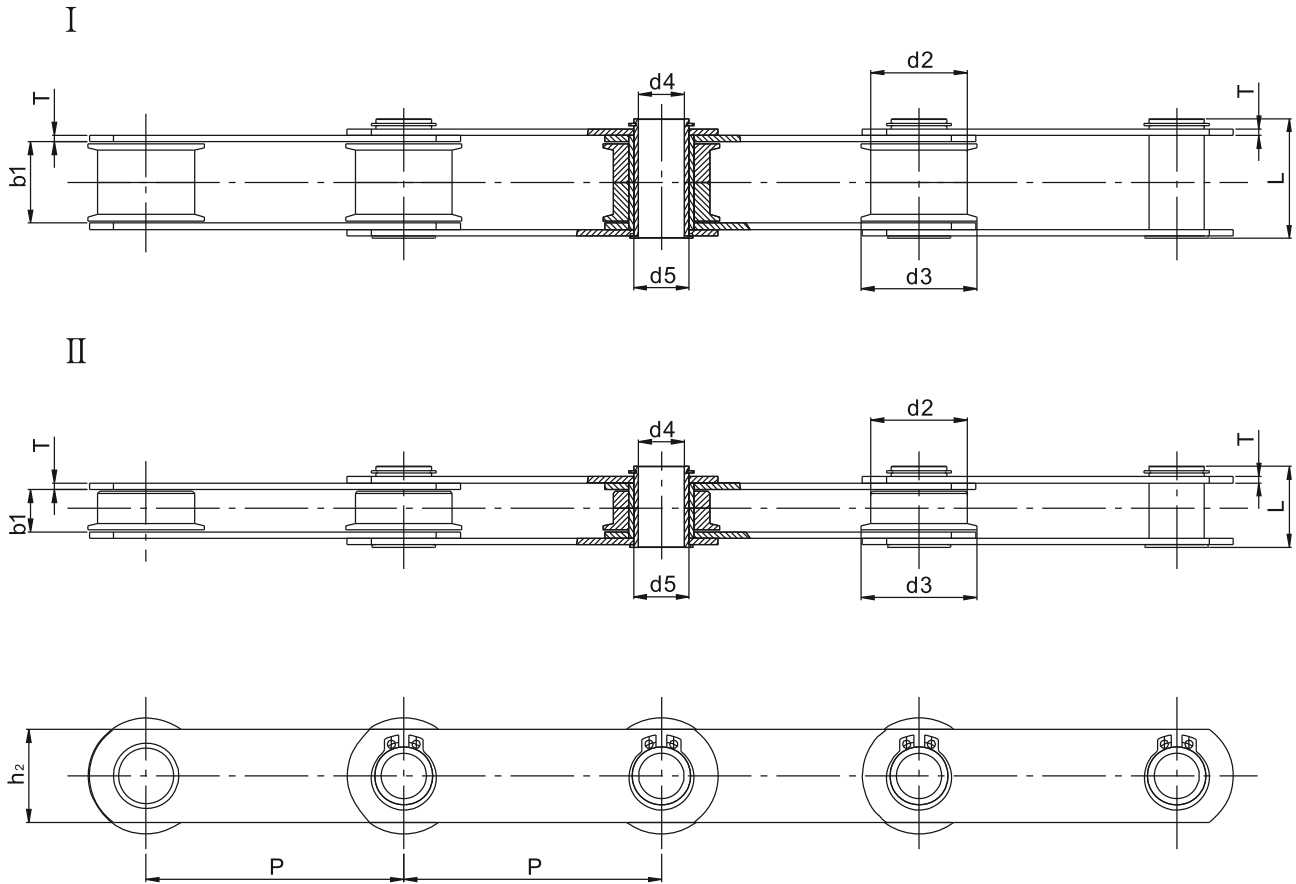
Catene per trasporto rifiuti / Sewage Disposal Chains-715 Stainless Steel Chains



Catena Chain	Passo Pitch	Larghezza interna Width between inner plates	Diam. Rullo Roller diameter			Diametro Perno Pin diameter		Largh. catena ribadita Riveted chain width	Dimensioni piastre Plates dimensions			Carico di rottura min. Ultimate tensile strength	Carico di rottura medio Average tensile strength	Peso al metro Weight per meter
	P	b ₁ min	d ₁ max	C max	d ₂ max	d ₃ max	L max	h ₂ max	T max	t max	Q min	Q ₀	q ≈	
	mm	mm	mm	mm	mm	mm	mm	mm	mm	mm	mm	mm	mm	kg/m
W152	152.4	25.40	66.7	85.7	27.1	20.0	58.8	50.0	5.0	7.0	110.0	122.1	10.50	

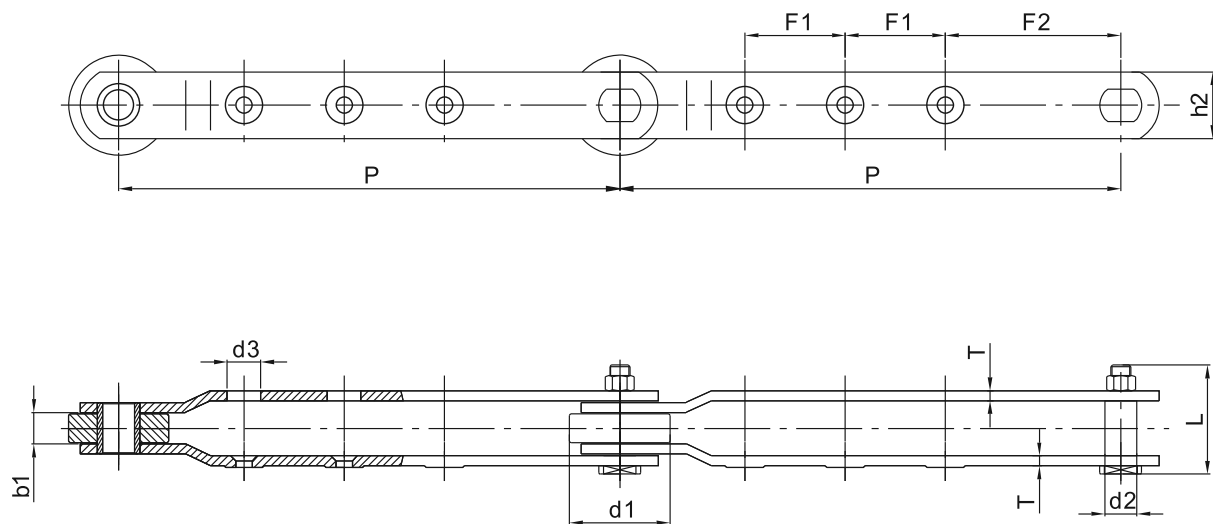


Catena Chain	Passo Pitch	Diametro bussola Bush Dimensions	Larghezza interna Width between inner plates	Altezza piastre Plate depth	Diametro Perno Pin diameter	Largh. catena ribadita Riveted chain width	Dimensioni piastre e attacchi Plates and attachments dimensions						Spessore piastra Plate thickness	Carico di rottura min. Ultimate tensile strength
	P	d ₁ max	b ₁ min	h ₂	d ₂ max	L max	d ₃	W	F ₁	H ₃	H ₁	F ₂	T	Q min
	mm	mm	mm	mm	mm	mm	mm	mm	mm	mm	mm	mm	mm	mm
715SS-F228-10LK2	152.4	25.4	30.23	47.75	14.22	71.75	11.18	139.7	95.25	200.15	60.45	114.3	6.35	146.8
715SS-F226-10LK2	152.4	25.4	30.23	47.75	14.22	71.63	11.18	139.7	95.25	157.7	60.45	66.8	6.35	146.8

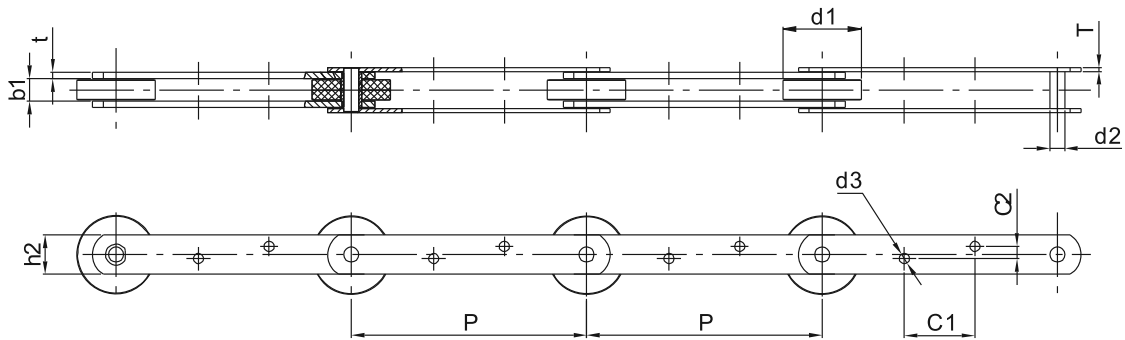
Catene in acciaio inox con **trattamento anticorrosivo** / **Anticorrosive Treatment** Stainless Steel Chains


Catena Chain	Passo Pitch	Larghezza interna Width between inner plates	Diam. Rullo Roller diameter		Diametro Perno Pin diameter		Largh. catena ribadita Riveted chain width	Altezza piastre Inner plates depth	Spessore piastra Plate thickness	Carico di rottura min. Ultimate tensile strength	Tipo Type
	P	b ₁ min	d ₂ max	d ₃ max	d ₄ max	d ₅	L max	h ₂ max	Q min	Q min	
	mm	mm	mm	mm	mm	mm	mm	mm	mm	kN	
P200HBSPF INOX	200	62.98	75	90	35.2	43	93.1	72	5	30	I
P200HBaF INOX	200	33	75	90	35.2	43	59	64	4	30	II
P200HBbF INOX	200	33	75	90	35.5	43	63.14	72	5	30	II

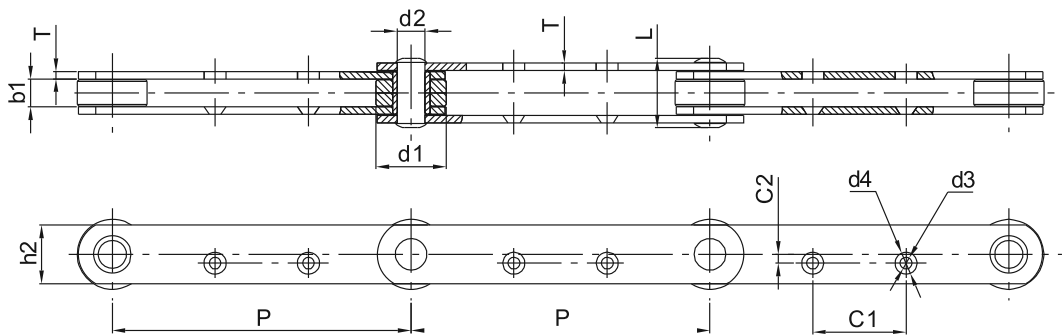
Catene in acciaio inox con **trattamento anticorrosivo** / **Anticorrosive Treatment** Stainless Steel Chains



Catena Chain	Passo Pitch	Larghezza interna Width between inner plates	Diam. Rullo Roller diameter	Diametro Perno Pin diameter	Largh. catena ribadita Riveted chain width	Dimensioni piastre Plates dimensions					Carico di rottura min. Ultimate tensile strength
	P	b_1 min	d_1 max	d_2 max	L max	h_2 max	T	d_3	F_1	F_2	Q min
	mm	mm	mm	mm	mm	mm	mm	mm	mm	mm	kN
P300(W)-1LGK-3 INOX	300.0	19	60	19.05	65.8	40	6	20	60	105	64

Catene in acciaio inox con **trattamento anticorrosivo** / **Anticorrosive Treatment** Stainless Steel Chains


Catena Chain	Passo Pitch	Larghezza interna Width between inner plates	Diam. Rullo Roller diameter	Diametro Perno Pin diameter	Dimensioni piastre Plates dimensions						Carico di rottura min. Ultimate tensile strength
	P	$b_{1\min}$	$d_{1\max}$	$d_{2\max}$	$h_{2\max}$	T	t	d_3	C_1	C_2	Q_{\min}
	mm	mm	mm	mm	mm	mm	mm	mm	mm	mm	kN
P300-LGL-2 INOX	300.0	29	100	19.05	50	5	8	13	90	15.5	78.8



Catena Chain	Passo Pitch	Larghezza interna Width between inner plates	Diam. Rullo Roller diameter	Diametro Perno Pin diameter	Largh. catena ribadita Riveted chain width	Dimensioni piastre Plates dimensions						Carico di rottura min. Ultimate tensile strength
	P	$b_{1\min}$	$d_{1\max}$	$d_{2\max}$	L max	$h_{2\max}$	T	D_3	D_4	C_1	C_2	Q_{\min}
	mm	mm	mm	mm	mm	mm	mm	mm	mm	mm	mm	kN
P203.2-1LKG-2 INOX	203.2	19.05	47.6	19.05	47.5	40	5	8.3	15	63.5	6	66.74