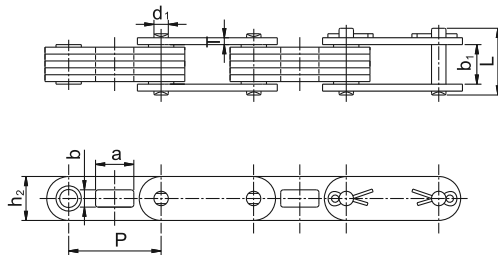
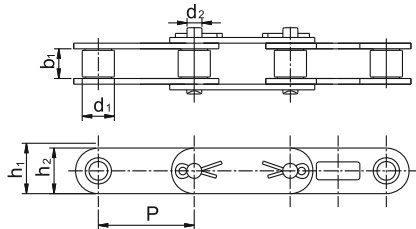




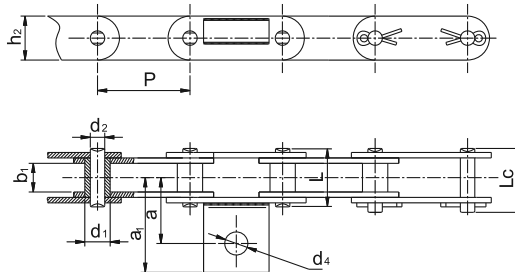
CATENE SPECIALI - CATENE SILENZIOSE
SPECIAL CHAINS - SILENT CHAINS

Catene per macchine asfaltatrici / *Paver Machines Chains*


| Passo <i>Pitch</i> | Larghezza interna <i>Width between inner plates</i> | Diametro Perno <i>Pin diameter</i> | Largh. catena ribadita <i>Riveted chain width</i> | Altezza piastre <i>Plates depth</i> | Spessore piastra <i>Plate thickness</i> | Dimensione piastra interna <i>Inner plate dimension</i> | | Carico di rottura min. <i>Ultimate tensile strength</i> | Peso al metro <i>Weight per meter</i> |
|-----------------------|--|---------------------------------------|--|--|--|--|----|--|--|
| P | b ₁ | d ₂ | L | h ₂ | T | a | b | Q _{min} | q _≈ |
| mm | mm | mm | mm | mm | mm | mm | mm | kN | kg/m |
| 75 | 32 | 14.27 | 54.20 | 36 | 5.60 | 34 | 14 | 100 | 7.18 |

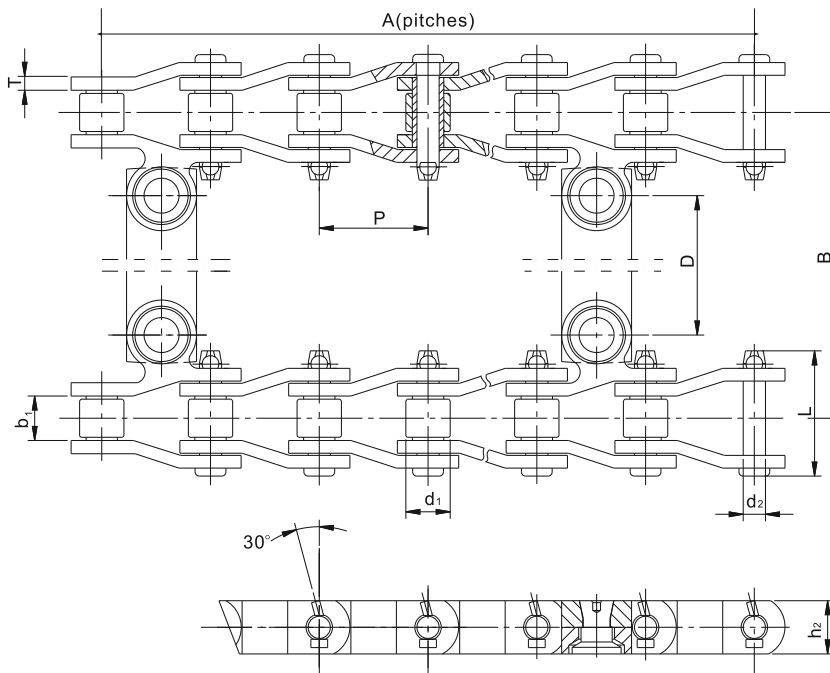


| Catena <i>Chain</i> | Passo <i>Pitch</i> | Diam. Rullo <i>Roller diameter</i> | Larghezza interna <i>Width between inner plates</i> | Diametro Perno <i>Pin diameter</i> | Altezza primitiva Catena <i>Chain path depth</i> | Altezza piastre <i>Plates depth</i> | Carico di rottura min. <i>Ultimate tensile strength</i> | Peso al metro <i>Weight per meter</i> |
|------------------------|-----------------------|---------------------------------------|--|---------------------------------------|---|--|--|--|
| | P | d _{1 max} | b _{1 min} | d ₂ | h _{2 min} | h _{2 max} | Q _{min} | q _≈ |
| | mm | mm | mm | mm | mm | mm | kN | kg/m |
| A 5188 | 66.27 | 28.58 | 23.80 | 12.60 | 29.50 | 28.80 | 133.50 | 6.14 |
| SGR188 | 66.27 | 22.23 | 26.50 | 11.10 | 29.50 | 28.80 | 143.00 | 6.83 |
| C 1594 | 69.85 | 31.75 | 25.60 | 14.27 | 36.30 | 32.50 | 106.73 | 9.27 |



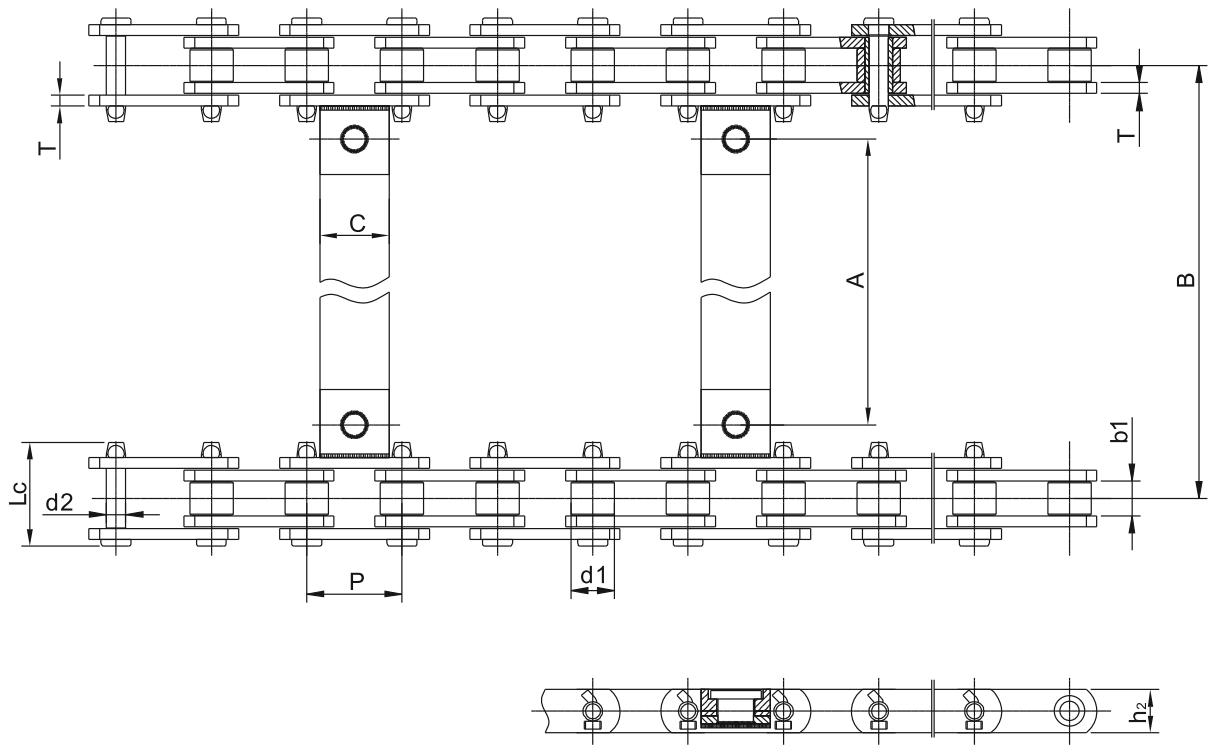
| Passo <i>Pitch</i> | Larghezza interna <i>Width between inner plates</i> | Diametro Rullo <i>Roller diameter</i> | Altezza piastre <i>Plate depth</i> | Dimensioni Perno <i>Pin dimensions</i> | | | Dimensione elemento raschiante <i>Scraper dimension</i> | | | Carico di rottura min. <i>Ultimate tensile strength</i> | Peso al metro <i>Weight per meter</i> |
|-----------------------|--|--|---------------------------------------|---|----------------|----------------|--|----------------|----------------|--|--|
| | | | | L | L _c | d ₂ | a | a ₁ | d ₄ | | |
| P | b _{1 min} | d ₂ | h ₂ | L | L _c | d ₂ | a | a ₁ | d ₄ | Q _{min} | q _≈ |
| mm | mm | mm | mm | mm | mm | mm | mm | mm | mm | kN | kg/m |
| 80 | 35.80 | 26 | 45 | 72 | 77 | 15.90 | 56.90 | 81.90 | 20 | 190 | 9 |

Catene per macchine asfaltatrici / Paver Machines Chains



| Catena Chain | Passo Pitch | Diam. Rullo Roller diameter | Larghezza interna Width between inner plates | Diametro Perno Pin diameter | Largh. catena ribadita Riveted chain width | Altezza piastra Plate depth | Spessore piastra Plate thickness | Carico di rottura min. Ultimate tensile strength | Carico di rottura medio Average tensile strength |
|-----------------|----------------|--------------------------------|---|--------------------------------|---|--------------------------------|-------------------------------------|---|---|
| | P | d ₁ max | b ₁ min | d ₂ max | L max | h ₂ max | T | Q min | Q ₀ |
| | mm | mm | mm | mm | mm | mm | mm | kN | kN |
| 40SL INOX | 78.11 | 31.75 | 31.75 | 15.90 | 89.65 | 38.00 | 9.50 | 265.60 | 300.00 |

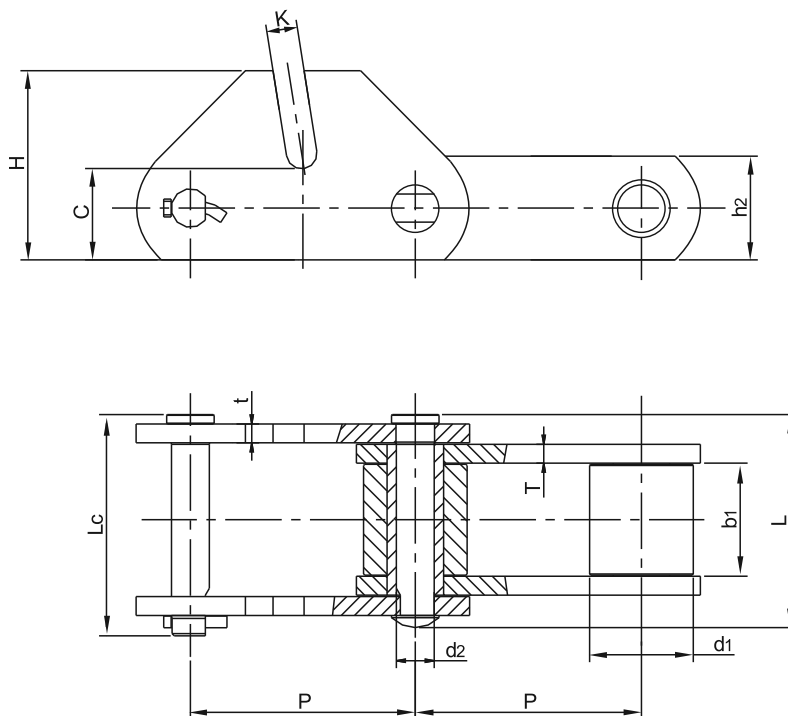
| Catena Chain | A | D | B | Catena Chain | A | D | B |
|------------------|-----|--------|--------|------------------|-----|--------|--------|
| 40SL-141-00 INOX | 113 | 424.66 | 542.93 | 40SL-152-00 INOX | 100 | 278.61 | 396.88 |
| 40SL-142-00 INOX | 98 | | | 40SL-153-00 INOX | 103 | 381.79 | 500.06 |
| 40SL-143-00 INOX | 103 | 381.79 | 500.06 | 40SL-154-00 INOX | 89 | 424.66 | 542.93 |
| 40SL-144-00 INOX | 88 | | | 40SL-155-00 INOX | 104 | 278.61 | 396.88 |
| 40SL-145-00 INOX | 116 | 570.71 | 688.98 | 40SL-156-00 INOX | 102 | 424.66 | 542.93 |
| 40SL-146-00 INOX | 11 | | | 40SL-157-00 INOX | 111 | 381.79 | 500.06 |
| 40SL-147-00 INOX | 96 | 470.69 | 588.96 | 40SL-158-00 INOX | 108 | | |
| 40SL-148-00 INOX | 86 | 424.66 | 542.93 | 40SL-159-00 INOX | 108 | 468.31 | 586.58 |
| 40SL-149-00 INOX | 81 | | | 40SL-160-00 INOX | 116 | | |
| 40SL-150-00 INOX | 97 | 348.46 | 466.73 | 40SL-175-00 INOX | 107 | 381.79 | 500.06 |
| 40SL-151-00 INOX | 87 | | | SS40SL-176-00 | 100 | 424.66 | 542.93 |

Catene per **macchine asfaltatrici / Paver Machines Chains**


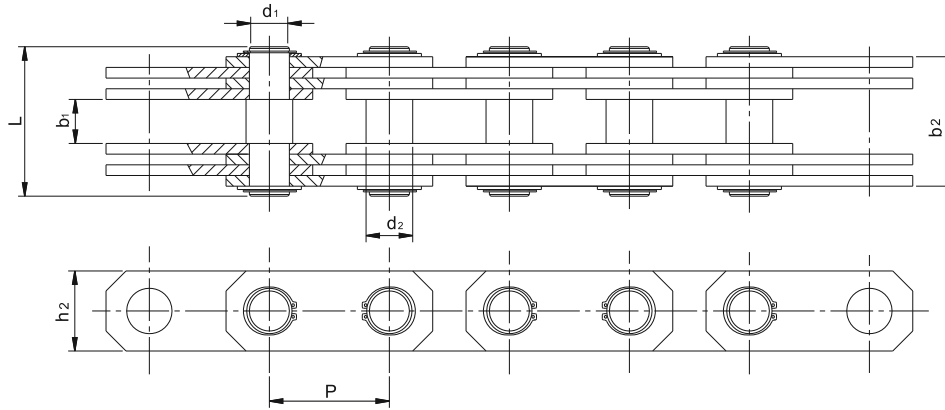
| Cod. Attacco | A | B | C |
|--------------|-----|-----|------|
| Att. Code | mm | mm | mm |
| RP150 | 375 | 483 | 50.8 |
| RP190 | 477 | 585 | 50.8 |

| Catena Chain | Passo Pitch | Diam. Rullo Roller diameter | Larghezza interna Width between inner plates | Diametro Perno Pin diameter | Largh. catena ribadita Riveted chain width | Altezza piastra Plate depth | Spessore piastra Plate thickness | Carico di rottura min. Ultimate tensile strength |
|--------------|-------------|-----------------------------|--|-----------------------------|--|-----------------------------|----------------------------------|--|
| | P | d ₁ max | b ₁ min | d ₂ max | L max | h ₂ max | T | Q min |
| | mm | mm | mm | mm | mm | mm | mm | kN |
| MSR1594 | 69.85 | 31.75 | 25.6 | 14.22 | 76.8 | 31.75 | 7.9 | 106.73 |

Catene da trasporto per **bitumazione** / Conveyor Chains For **Asphalt Production**

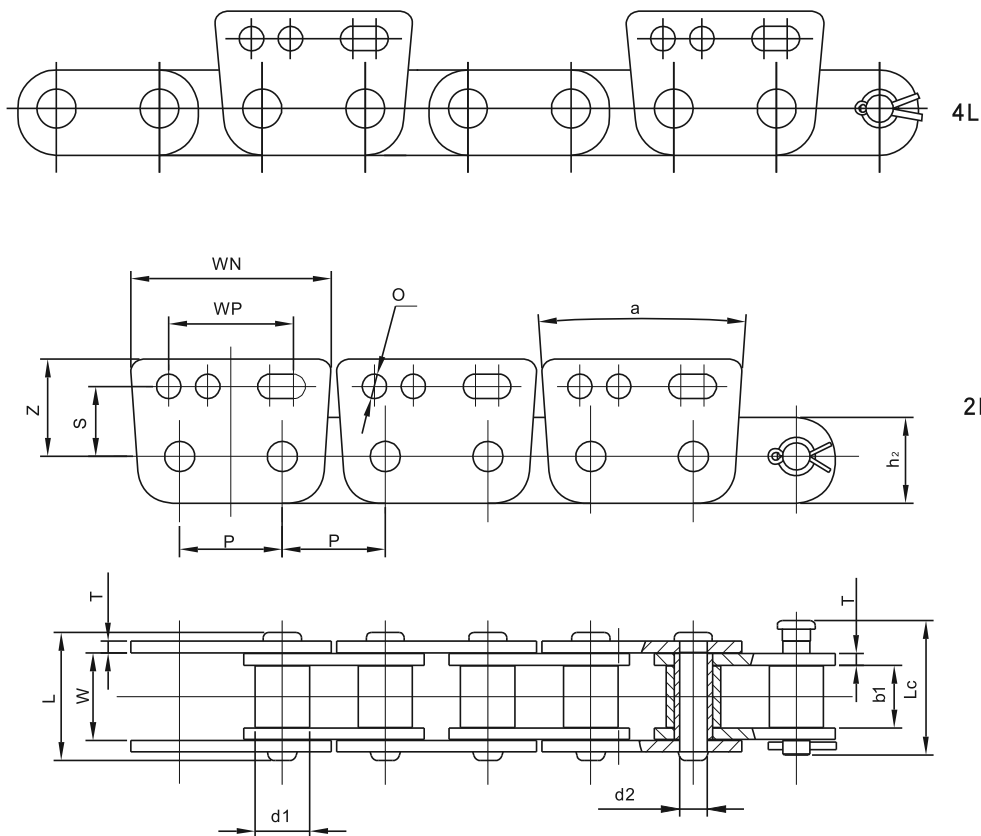


| Catena Chain | Passo Pitch | Diam. Rullo Roller diameter | Larghezza interna Width between inner plates | Diametro Perno Pin diameter | Largh. catena ribadita Riveted chain width | | Dimensioni piastre e attacchi Plate and attachments dimensions | | | | | Carico di rottura min. Ultimate tensile strength | Peso al metro Weight per meter |
|-----------------|----------------|--------------------------------|---|--------------------------------|---|--------------------|---|-------|-------|-------|-------|---|-----------------------------------|
| | P | d ₁ max | b ₁ min | d ₂ max | L max | L _c max | h ₂ max | H | C | K | t/T | Q min | q ≈ |
| | mm | mm | mm | mm | mm | mm | mm | mm | mm | mm | mm | KN | Kg/m |
| MSR2856-M16 | 152.4 | 69.85 | 76.2 | 25.4 | 149.1 | 149.1 | 69.85 | 127.0 | 61.47 | 20.62 | 12.70 | 622.8 | 39.5 |

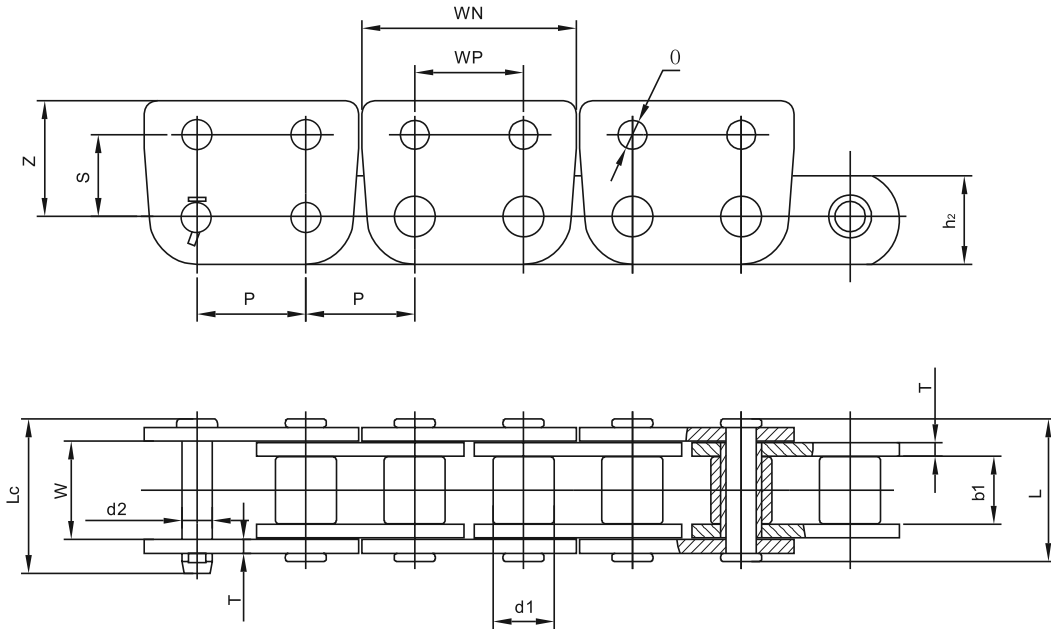
Catene per **trafilatrici / Draw Bench Chains**


| Catena Chain | Passo Pitch | Altezza piastra Plate depth | Distanza tra le piastre interne Inner distance | Distanza tra le piastre esterne Outer plates distance | Largh. catena ribadita Riveted chain width | Diametro Perno Pin diameter | |
|-----------------|----------------|-----------------------------------|--|--|---|--------------------------------|-------|
| | P | h_2 max | b_1 max | b_2 max | L max | d_1 | d_2 |
| | mm | mm | mm | mm | mm | mm | mm |
| LB40 | 200 | 130.2 | 85 | 235 | 256 | 65 | 75 |
| LB65 | 250 | 150.2 | 100 | 278 | 304 | 75 | 84 |

Catene trasporto per **escavatori** / **Trencher Chains**

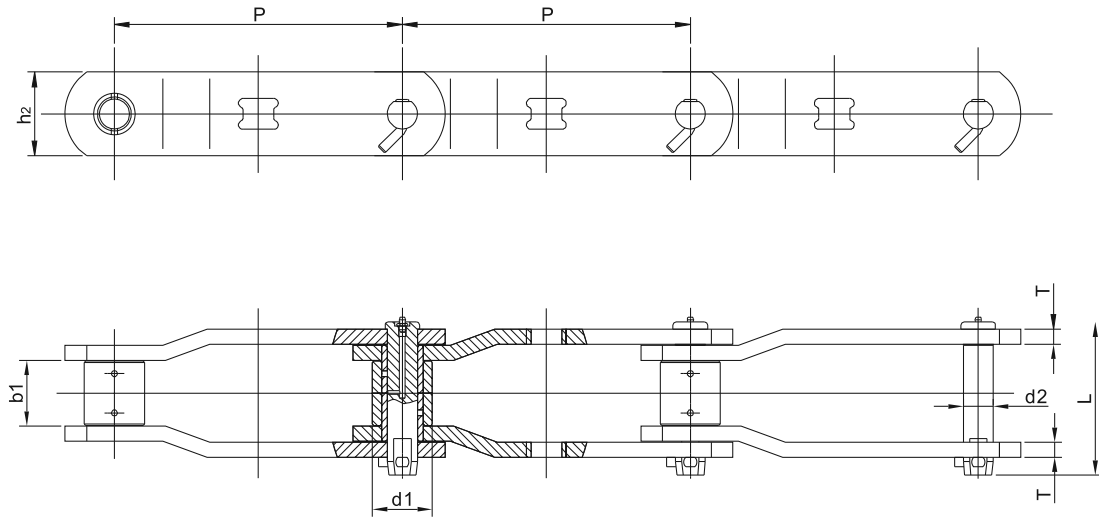


| Catena Chain | Passo Pitch | Dimensioni Dimensions | | | | | | | | | | | | | | Carico di rottura medio Average tensile strength | Peso al metro Weight per meter | |
|-----------------|----------------|--------------------------|-----------------------|-----------------------|-----------------------|----------|-----------------------|----------|-----------|----|-------|------|----|------|------|---|-----------------------------------|--------|
| | | P | d ₁ max | d ₂ max | b ₁ min | W min | h ₂ max | L max | Lc max | T | O | WN | WP | α | S | Z | Q ₀ | q ≈ |
| | | mm | mm | mm | mm | mm | mm | mm | mm | mm | mm | mm | mm | / | mm | mm | kN | Kg/m |
| 4210-2LSK-3 | 42.01 | 22.23 | 11.11 | 25.4 | 35.5 | 34.9 | 53.3 | 54.9 | 4.8 | 10 | 81.66 | 50.8 | 8° | 28.6 | 39.7 | 115.2 | 7.85 | |
| 4210-4LSK-3 | | | | | | | 52.6 | | | | | | | | | | 7.10 | |

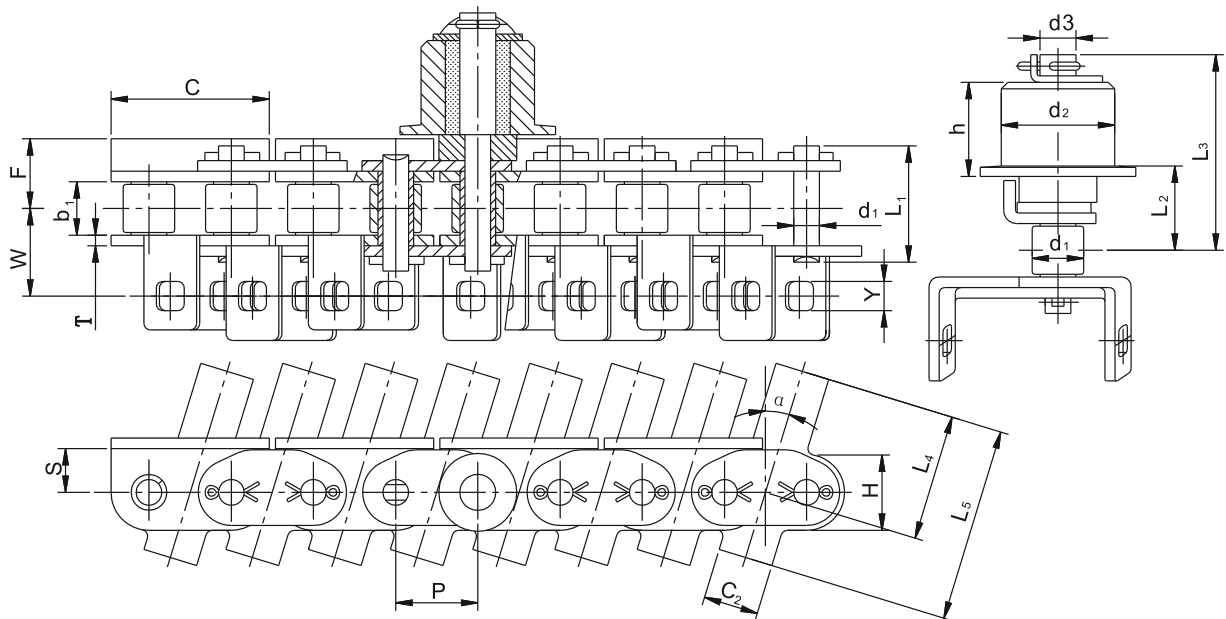
Catene trasporto per **escavatori / Trencher Chains**


| Catena Chain | Passo Pitch | Dimensioni Dimensions | | | | | | | | | | | | | Carico di rottura medio Average tensile strength | Peso al metro Weight per meter |
|-----------------|----------------|--------------------------|--------------------|--------------------|-------|--------------------|-------|--------|------|------|-------|------|------|------|---|-----------------------------------|
| | P | d ₁ max | d ₂ max | b ₁ min | W min | h ₂ max | L max | Lc max | T | O | WN | WP | S | Z | Q ₀ | q ≈ |
| | mm | mm | mm | mm | mm | mm | mm | mm | mm | mm | mm | mm | mm | mm | kN | Kg/m |
| 5019 -2L-WSK | 50.8 | 28.58 | 14.12 | 31.75 | 46.02 | 41.28 | 68.0 | 73.0 | 6.35 | 13.5 | 99.96 | 50.8 | 38.1 | 54.0 | 191.3 | 13.99 |

Catene a maglie false tipo **2614M14** / **2614M14 Type Cranked-link Chains**



| Catena Chain | Passo <i>Pitch</i> | Larghezza interna <i>Width between inner plates</i> | Diametro Rullo <i>Roller diameter</i> | Diametro Perno <i>Pin diameter</i> | Largh. catena ribadita <i>Riveted chain width</i> | Altezza piastra <i>Plate depth</i> | Spessore piastra <i>Plate thickness</i> | Carico di rottura min. <i>Ultimate tensile strength</i> |
|-----------------|-----------------------|---|---|--|--|--|---|---|
| | P | b ₁ min | d ₁ max | d ₂ max | L max | h ₂ | T | Q min |
| | mm | mm | mm | mm | mm | mm | mm | kN |
| 2614M14 | 304.8 | 69.85 | 63.5 | 31.75 | 161.9 | 88.9 | 15.88 | 900 |

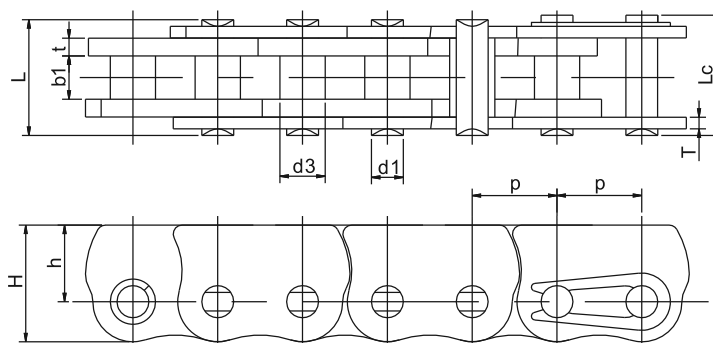
Catene per **macchine da stampa** / Chains for **printers**


| Catena Chain | Passo Pitch | Diametro Rullo Roller diameter | Larghezza interna Width between inner plates | Spessore piastra Plate thickness | Diam. Perno Pin diameter | Largh. catena ribadita Riveted chain width | Dimensioni attacco laterale Side Roller attachment dimensions | | | | |
|-----------------------------|----------------|-----------------------------------|---|-------------------------------------|-----------------------------|---|--|-------|-----------------------|-----------------------|-----------------------|
| | P | d ₁ max | b ₁ min | T | d ₁ max | L ₁ max | d ₂ max | h | d ₃ max | L ₂ max | L ₃ max |
| | mm | mm | mm | mm | mm | mm | mm | mm | mm | mm | mm |
| PR80-1LUA-1 -2LIA-0-8LSR | 25.40 | 15.88 | 15.75 | 3.26 | 7.92 | 35.85 | 35.00 | 29.00 | 11.30 | 25.70 | 60.30 |

| Dimensioni degli attacchi Attachments dimensions | | | | | | | | | | Tensile strength | Peso al metro Weight per meter |
|---|-------|-------|-------|----------------|-----|----------------|----------------|-------|-----------|---------------------|-----------------------------------|
| C | S | F | W | C ₂ | α | L ₄ | L ₅ | H | Y | Q _{min} | q _≈ |
| mm | mm | mm | mm | mm | mm | mm | mm | mm | kN | kN | Kg/m |
| 50.00 | 13.50 | 21.50 | 27.00 | 17.00 | 17° | 39.00 | 60.00 | 23.40 | 9.10x9.10 | 55.60 | 5.33 |

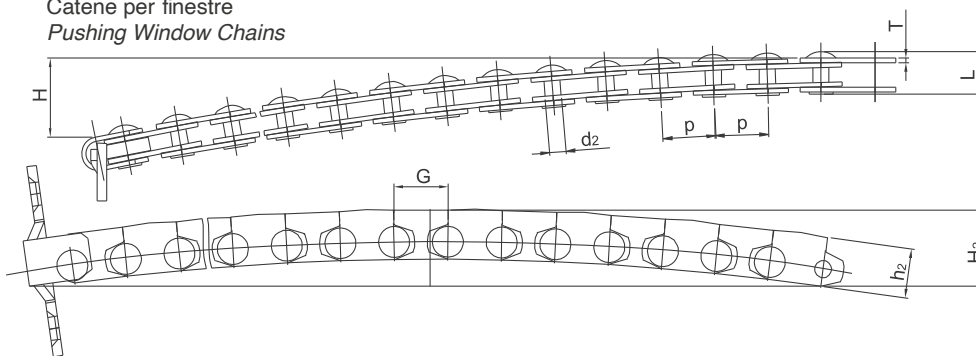
Catene a rulli anticurvatura & catene per finestre / Anti-Side Bow & Pushing **Windows** Chains

Catene a Rulli anticurvatura
Anti-Side Bow Chains



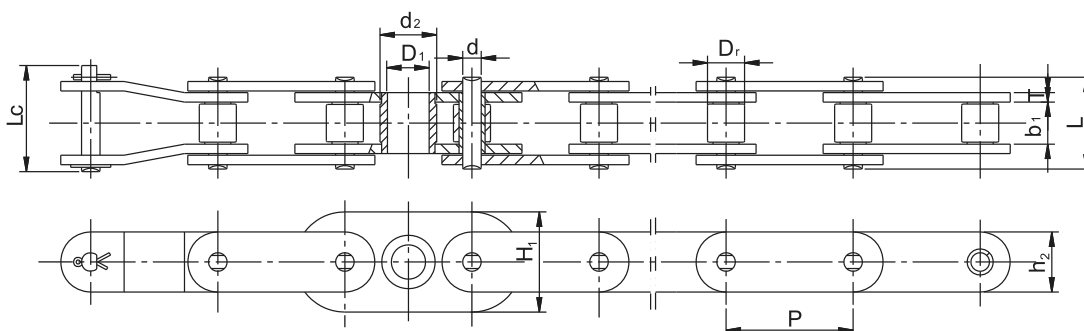
| Catena Chain | Passo Pitch | Diametro bussola Bush diameter | Larghezza interna Width between inner plates | Diametro Perno Pin diameter | Largh. catena ribadita Riveted chain width | | Dimensioni piastre Plates dimensions | | | Carico di rottura min. Ultimate tensile strength | Peso al metro Weight per meter |
|-----------------|----------------|-----------------------------------|---|--------------------------------|---|--------------------|---|-----|---------|---|-----------------------------------|
| | p | d ₃ max | b ₁ min | d ₂ max | L max | L _c max | H | h | t/T max | Q min | q ≈ |
| | mm | mm | mm | mm | mm | mm | mm | mm | mm | kN | Kg/m |
| SPC9.525 | 9.525 | 5.08 | 4.68 | 3.58 | 13.1 | 14.6 | 13.1 | 8.6 | 2/1.3 | 10.8 | 0.73 |

Catene per finestre
Pushing Window Chains

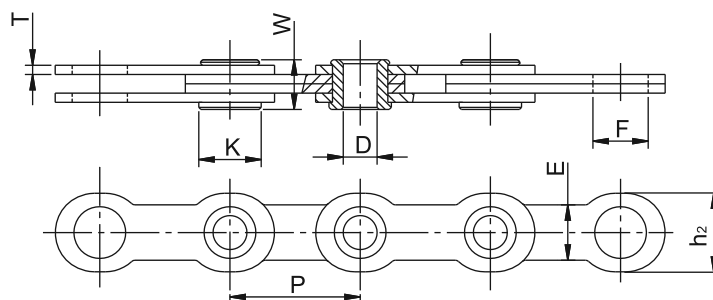


| Catena Chain | Passo Pitch | Diametro Perno Pin diameter | Largh. catena ribadita Riveted chain width | Dimensioni piastre Plates dimensions | | | Dimensioni piastre Plates dimensions | | Peso al metro Weight per meter |
|-----------------|----------------|--------------------------------|---|---|-------|-------|---|--------------------|-----------------------------------|
| | p | d ₂ max | L max | h ₂ max | G max | T max | H | H ₂ max | q ≈ |
| | mm | mm | mm | mm | mm | mm | mm | mm | Kg/m |
| SPC12.65a | 12.70 | 3.9 | 9.80 | 11.95 | 12.80 | 1.1 | 50 ~ 80 | 17.0 | 0.33 |
| * SPC12.65 | 12.70 | 3.9 | 9.80 | 11.95 | 12.80 | 1.1 | 55 ~ 75 | 17.0 | 0.33 |

* Catene in Acciaio INOX / * Stainless Steel Chains

Catene per **macchine tessili** / Chains for **Textile Machines**


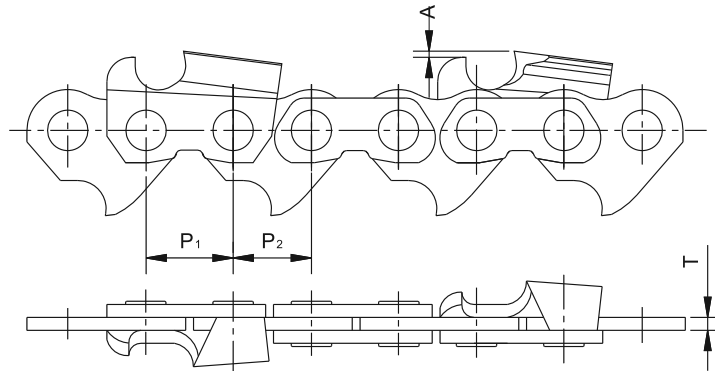
| Catena Chain | Passo Pitch | Diam. Rullo Roller diameter | Larghezza interna Width between inner plates | Altezza piastra Inner plate depth | Spessore piastra Plate thickness | Diametro Perno Pin diameter | Largh. catena ribadita Riveted chain width | | Dimensioni degli attacchi Attachments dimensions | | |
|----------------------|----------------|--------------------------------|---|--------------------------------------|-------------------------------------|--------------------------------|---|--------------------|---|----------------|--------------------|
| | P | Dr max | b ₁ min | h ₂ max | T | d max | L max | L _c max | D ₁ | d ₂ | H ₁ max |
| | mm | mm | mm | mm | mm | mm | mm | mm | mm | mm | mm |
| C2120H-15L C/W G1 | 76.20 | 22.23 | 25.22 | 36.20 | 5.65 | 11.10 | 53.80 | 60.40 | 25.00 | 34.00 | 60.00 |
| C2140H-15L C/W G1 | 88.90 | 25.40 | 25.22 | 42.24 | 6.45 | 12.70 | 57.90 | 62.50 | 30.00 | 42.80 | 60.00 |
| CP92H-15L C/W G1 | 92.00 | 25.40 | 25.22 | 42.24 | 6.45 | 12.70 | 57.90 | 62.50 | 30.00 | 42.80 | 60.00 |



| Catena Chain | Passo Pitch | Dimensioni bussola Bushing dimensions | | | Dimensioni piastre Plates dimensions | | | |
|-----------------|----------------|--|-------|-------|---|-------|-------|------|
| | P | D | W | K | h ₂ | E | F | T |
| | mm | mm | mm | mm | mm | mm | mm | mm |
| HL36.5 | 36.51 | 9.50 | 14.80 | 17.50 | 22.00 | 15.50 | 14.50 | 2.60 |

 Note: Usata per fibre di cotone
 Note: Used for cotton fiber

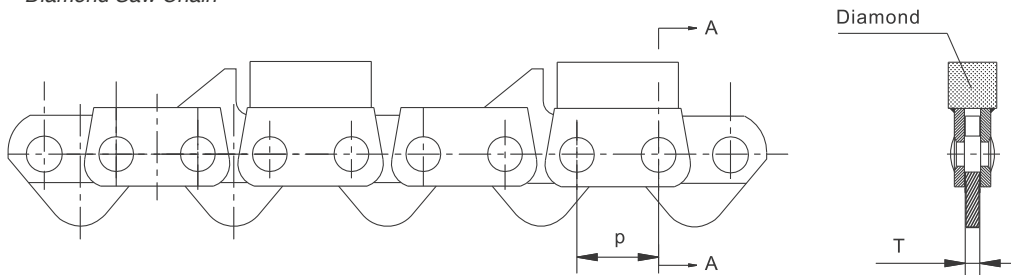
Catene per motoseghe / Saws Chains



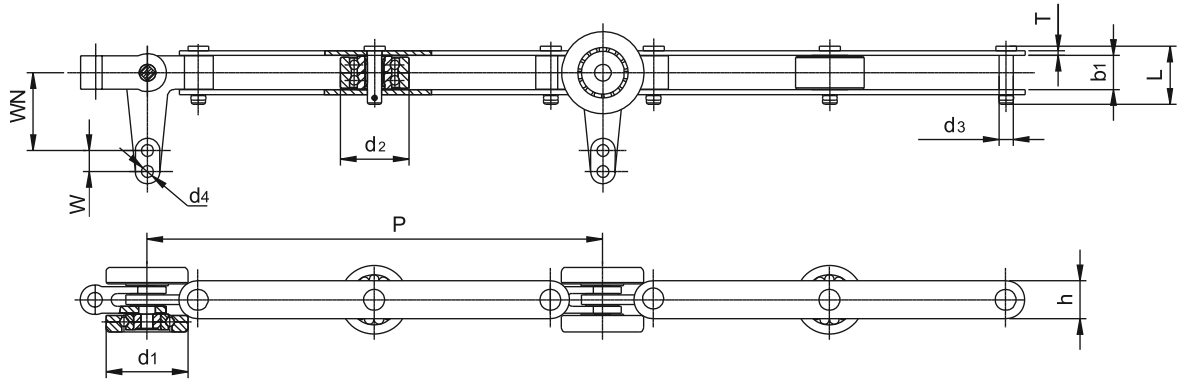
| Catena LY LY Chain | Passo 1 Pitch 1 | Passo 2 Pitch 2 | Altezza di taglio Depth gauge setting | Spessore piastra di guida Transmission-plate thickness | | Carico di rottura min. Ultimate tensile strength | Carico di rottura medio Average tensile strength |
|-----------------------|--------------------|--------------------|--|---|--------|---|---|
| | P ₁ | P ₂ | A | T | *δ | Q | Q ₀ |
| | mm | mm | mm | mm | mm | kN | kN |
| JL9d-3 | 9.52 | 9.33 | 0.65 | 1.30 | ± 0.05 | 3.50 | 4.20 |
| JL8-3 | 8.25 | 8.25 | 0.65 | 1.30 | | 6.00 | 6.90 |
| JL8-5 | 8.25 | 8.25 | 0.65 | 1.50 | | 7.00 | 8.00 |
| JL9-3 | 9.52 | 9.33 | 0.65 | 1.30 | | 7.00 | 8.00 |
| JL9-5 | 9.52 | 9.33 | 0.65 | 1.50 | | 8.00 | 9.2 |
| JL10-6 | 10.26 | 10.26 | 0.76 | 1.60 | | 8.50 | 10.40 |

*δ Tolleranza dello spessore delle piastre / *δ indicates tolerance of transmission-plates thickness.

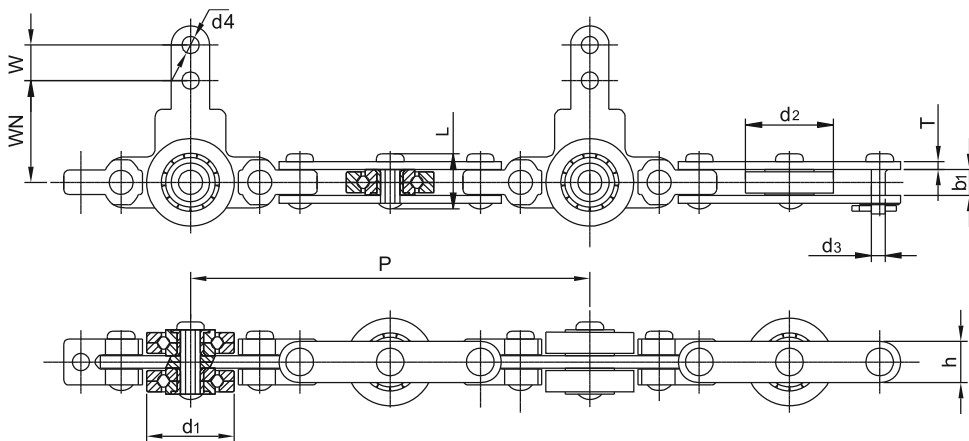
Catena Diamantata per motosega
Diamond Saw Chain



| Catena Chain | Passo Pitch | Spessore piastra di guida Transmission-plate thickness | Carico di rottura min. Ultimate tensile strength | Carico di rottura medio Average tensile strength |
|-----------------|----------------|---|---|---|
| | P | T | Q | Q ₀ |
| | mm | mm | kN | kN |
| Yj9 | 9.95 | 1.80 | 7.93 | 9.20 |

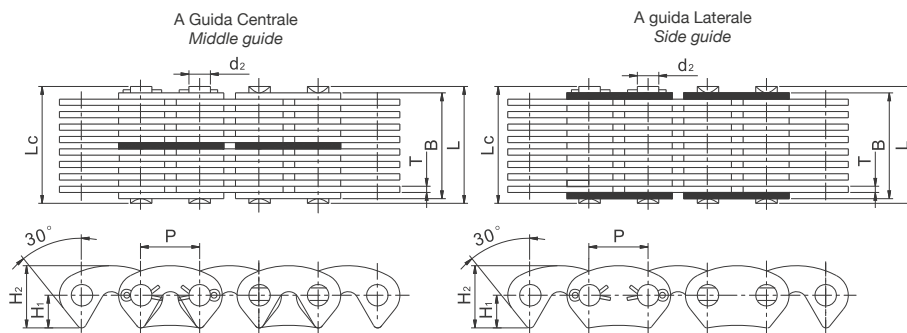
Catene per **trasporto e sollevamento** / *Hanging Conveyor Chains*


| Catena Chain | Passo Pitch | Diametro Rullo Roller diameter | | Larghezza interna Width between inner plates | Diametro Perno Pin diameter | Largh. catena ribadita Riveted chain width | Dimensioni piastre Plates dimensions | | Dimensioni attacchi Attachments dimensions | | |
|-----------------|----------------|-----------------------------------|----------------|--|--------------------------------|---|---|-----|---|----------------|----|
| | P | d ₁ | d ₂ | b ₁ | d ₃ | L | h | T | W | d ₄ | WN |
| | mm | mm | mm | mm | mm | mm | mm | mm | mm | mm | mm |
| P304.8XG | 304.8 | 55 | 46 | 22.8 | 9.8 | 40 | 25.6 | 3.2 | 14 | 7.9 | 52 |



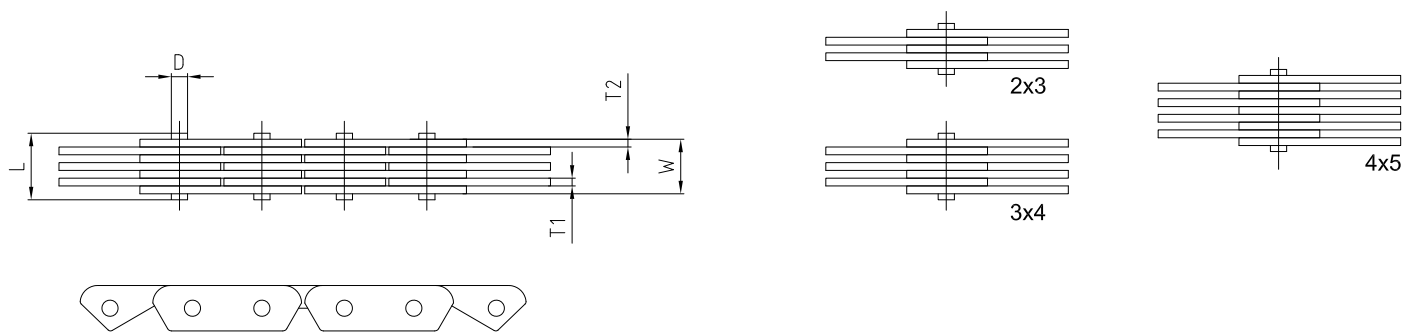
| Catena Chain | Passo Pitch | Diametro Rullo Roller diameter | | Larghezza interna Width between inner plates | Diametro Perno Pin diameter | Largh. catena ribadita Riveted chain width | Dimensioni piastre Plates dimensions | | Dimensioni attacchi Attachments dimensions | | |
|-----------------|----------------|-----------------------------------|----------------|--|--------------------------------|---|---|----|---|----------------|------|
| | P | d ₁ | d ₂ | b ₁ | d ₃ | L | h | T | W | d ₄ | WN |
| | mm | mm | mm | mm | mm | mm | mm | mm | mm | mm | mm |
| P152.4XG | 152.4 | 33.3 | | 9.9 | 6.4 | 22.1 | 15.9 | 3 | 13.5 | 6.5 | 38.8 |

Catene silenziose / Silent Chains



SERIE AMERICANA / AMERICAN SERIES

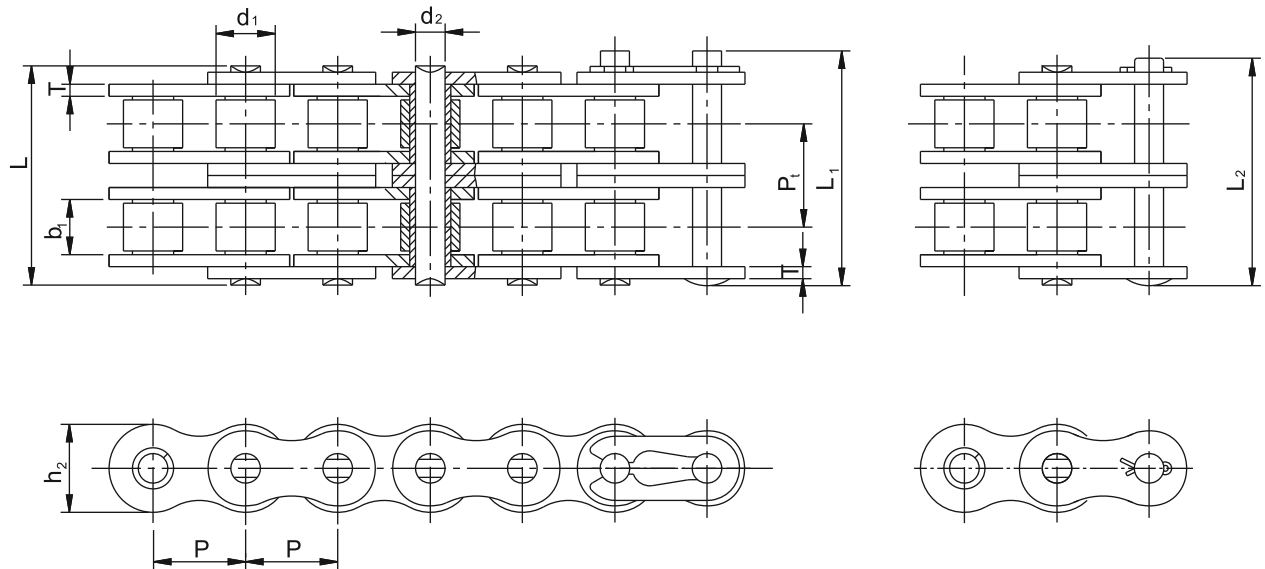
| Catena Chain | Passo Pitch | Larghez. Catena Chain width | Diametro Perno Pin diameter | Largh. catena ribadita Riveted chain width | | Distanza dal centro del foro Distance from hole center to tooth | Altezza piastra Inner plate depth | Spessore piastra Plate thickness | Guida da Guide from | Numero Piastre Number of plates | Carico di rottura min. Ultimate tensile strength | Carico di rottura medio Average tensile strength | Peso al metro Weight per meter |
|-----------------|----------------|-----------------------------------|-----------------------------------|--|--------|---|---|--|------------------------|---------------------------------------|---|---|-----------------------------------|
| | P | B min | d ₂ max | L max | Lc max | H ₁ | H ₂ max | T | | n | Q min | Q ₀ | q ≈ |
| | mm | mm | mm | mm | mm | mm | mm | mm | | | kN | kN | kg/m |
| CL06 | 9.525 | 13.5 | 3.96 | 18.5 | 20.0 | 5.3 | 10.0 | 1.5 | Esterno Outside | 9 | 10.0 | 11.2 | 0.60 |
| | | 16.5 | | 21.5 | 23.0 | | | | Esterno Outside | 11 | 12.5 | 14.0 | 0.73 |
| | | 19.5 | | 24.5 | 26.0 | | | | Esterno Outside | 13 | 15.0 | 16.8 | 0.85 |
| | | 22.5 | | 27.5 | 29.0 | | | | Esterno Outside | 15 | 17.5 | 19.6 | 1.00 |
| | | 28.5 | | 33.5 | 35.0 | | | | Esterno Outside | 19 | 22.5 | 25.2 | 1.26 |
| CL08 | 12.70 | 19.5 | 5.08 | 24.5 | 26.0 | 7.0 | 13.4 | 1.5 | Esterno Outside | 13 | 23.4 | 26.2 | 1.15 |
| | | 22.5 | | 27.5 | 29.0 | | | | Esterno Outside | 15 | 27.4 | 30.6 | 1.33 |
| | | 25.5 | | 30.5 | 32.0 | | | | Esterno Outside | 17 | 31.3 | 35.0 | 1.50 |
| | | 28.5 | | 33.5 | 35.0 | | | | Interno Inside | 19 | 35.2 | 39.4 | 1.68 |
| | | 34.5 | | 39.5 | 41.0 | | | | Interno Inside | 23 | 43.0 | 48.1 | 2.04 |
| | | 40.5 | | 45.5 | 47.0 | | | | Interno Inside | 27 | 50.8 | 56.8 | 2.39 |
| | | 46.5 | | 51.5 | 53.0 | | | | Interno Inside | 31 | 58.6 | 65.6 | 2.74 |
| | | 52.5 | | 57.5 | 59.0 | | | | Interno Inside | 35 | 66.4 | 74.3 | 3.10 |
| CL10 | 15.875 | 30.0 | 5.94 | 37.0 | 38.2 | 8.7 | 16.7 | 2.0 | Interno Inside | 15 | 45.6 | 50.6 | 2.21 |
| | | 38.0 | | 45.0 | 46.2 | | | | Interno Inside | 19 | 58.6 | 65.0 | 2.80 |
| | | 46.0 | | 53.0 | 54.2 | | | | Interno Inside | 23 | 71.7 | 79.5 | 3.39 |
| | | 54.0 | | 61.0 | 62.4 | | | | Interno Inside | 27 | 84.7 | 94.0 | 3.99 |
| | | 62.0 | | 69.0 | 70.4 | | | | Interno Inside | 31 | 97.7 | 108.4 | 4.58 |
| CL12 | 19.05 | 38.0 | 6.90 | 45.0 | 46.5 | 10.5 | 20.0 | 2.0 | Interno Inside | 19 | 70.0 | 77.6 | 3.37 |
| | | 46.0 | | 53.0 | 54.5 | | | | Interno Inside | 23 | 86.0 | 95.4 | 4.08 |
| | | 54.0 | | 61.0 | 62.8 | | | | Interno Inside | 27 | 102.0 | 113.2 | 4.78 |
| | | 62.0 | | 69.0 | 70.8 | | | | Interno Inside | 31 | 117.0 | 129.8 | 5.50 |
| | | 70.0 | | 77.0 | 78.8 | | | | Interno Inside | 35 | 133.0 | 147.6 | 6.20 |
| CL16 | 25.4 | 45.0 | 8.90 | 52.0 | 53.5 | 14.0 | 26.7 | 3.0 | Interno Inside | 15 | 111.0 | 123.2 | 5.31 |
| | | 51.0 | | 58.0 | 59.5 | | | | Interno Inside | 17 | 125.0 | 138.7 | 6.02 |
| | | 57.0 | | 64.0 | 65.5 | | | | Interno Inside | 19 | 141.0 | 156.5 | 6.37 |
| | | 69.0 | | 76.2 | 77.7 | | | | Interno Inside | 23 | 172.0 | 190.9 | 8.15 |
| | | 81.0 | | 88.2 | 89.7 | | | | Interno Inside | 27 | 203.0 | 225.3 | 9.57 |
| | | 93.0 | | 100.2 | 101.7 | | | | Interno Inside | 31 | 235.0 | 260.8 | 10.98 |
| CL20 | 31.75 | 57.0 | 10.84 | 66.6 | 69.6 | 17.5 | 33.4 | 3.0 | Interno Inside | 19 | 165.0 | 183.1 | 8.42 |
| | | 69.0 | | 78.6 | 81.6 | | | | Interno Inside | 23 | 201.0 | 223.1 | 10.19 |
| | | 81.0 | | 90.6 | 93.6 | | | | Interno Inside | 27 | 237.0 | 263.2 | 11.96 |
| | | 93.0 | | 102.6 | 105.6 | | | | Interno Inside | 31 | 273.0 | 303.0 | 13.73 |
| | | 105.0 | | 114.6 | 117.6 | | | | Interno Inside | 35 | 310.0 | 341.0 | 15.50 |
| | | 117.0 | | 126.6 | 129.6 | | | | Interno Inside | 39 | 346.0 | 380.6 | 17.27 |

Catene distribuzione motore / Timing Chains for Engine


| GB Catena GB Chain | JCAS Catena JCAS Chain | Passo | Diam. Rullo | Larghezza interna | Diametro Perno | Largh. catena ribadita | Altezza piastra | Carico di rottura min. | Carico di rottura medio | Peso al metro |
|---------------------------------|-------------------------------------|-------|-----------------------|----------------------------------|-----------------------|------------------------------|-----------------------|---------------------------------|--------------------------------|---------------------|
| | | Pitch | Roller diameter | Width between inner plates | Pin diameter | Riveted chain width | Inner plate depth | Ultimate tensile strength | Average tensile strength | Weight per meter |
| | | p | d ₁ max | b ₁ min | d ₂ max | L max | h ₂ max | Q min | Q ₀ | q ≈ |
| | | mm | mm | mm | mm | mm | mm | kN | kN | kg/m |
| 04MA | 25H | 6.35 | 3.30 | 3.18 | 2.31 | 8.90 | 6.00 | 4.80 | 5.20 | 0.17 |
| 04C | | 6.35 | 3.30 | 3.18 | 2.31 | 7.90 | 6.00 | 3.50 | 4.40 | 0.15 |
| 04C-2 | | 6.35 | 3.30 | 3.18 | 2.31 | 14.50 | 6.00 | 7.00 | 8.20 | 0.28 |
| 05MA | 219 | 7.774 | 4.59 | 5.00 | 3.01 | 12.00 | 7.60 | 6.60 | 7.10 | 0.27 |
| 05MC | 270 | 8.50 | 5.00 | 4.75 | 3.28 | 13.30 | 8.45 | 9.80 | 11.70 | 0.33 |
| 06B-1 | | 9.525 | 6.35 | 5.72 | 3.28 | 13.15 | 8.26 | 8.90 | 10.30 | 0.41 |
| 06B-2 | | 9.525 | 6.35 | 5.72 | 3.28 | 23.40 | 8.26 | 16.90 | 18.10 | 0.74 |
| 06C | | 9.525 | 5.08 | 4.77 | 3.58 | 12.40 | 9.00 | 7.90 | 9.80 | 0.33 |

| GB/ISO Catena GB/ISO Chain | Passo | Larghezza Catena | Allacciatura Perno | Diametro Perno | Largh. catena ribadita | Spessore maglia | | Profondità maglia | | Carico di rottura min. | Carico a fatica | Peso al metro |
|---|-------|---------------------|-----------------------|-------------------|------------------------------|--------------------|----------------|----------------------|----------------|---------------------------------|-----------------------|---------------------|
| | Pitch | Chain width | Pin lacing | Pin diameter | Riveted chain width | Link thickness | | Link depth | | Ultimate tensile strength | Fatigue strength | Weight per meter |
| | p | W | | D max | L max | T ₁ | T ₂ | H ₁ | H ₂ | Q min | Q ₀ min | q ≈ |
| | mm | mm | | mm | mm | mm | | | | kN | kN | kg/m |
| C063-4.8 | 6.35 | 4.80 | 2 x 3 | 2.70 | 6.10 | 1.04 | 0.72 | 3.92 | 6.72 | 5.46 | 0.98 | 0.173 |
| C063-6.5 | 6.35 | 6.50 | 3 x 4 | 2.70 | 8.25 | 1.04 | 0.72 | 3.92 | 6.72 | 7.23 | 1.47 | 0.248 |
| C063-9.5 | 6.35 | 9.50 | 4 x 5 | 2.70 | 10.95 | 1.04 | 1.04 | 3.92 | 6.72 | 9.52 | 2.06 | 0.340 |

Giunti a catena / Couplings Chains



| Catena Chain | Passo Pitch | Diametro Rullo Roller diameter | Larghezza interna Width between inner plates | Diametro Perno Pin diameter | Largh. catena ribadita Riveted chain width | | | Altezza piastra Inner plate depth | Passo trasvers. Transverse pitch | Spessore piastra Plate thickness | Carico di rottura min. Ultimate tensile strength | Carico di rottura medio Average tensile strength | Peso al metro Weight per meter |
|-----------------|----------------|-----------------------------------|---|--------------------------------|---|--------------------|--------------------|--------------------------------------|-------------------------------------|-------------------------------------|---|---|-----------------------------------|
| | P | d ₁ max | b ₁ min | d ₂ max | L max | L ₁ max | L ₂ max | h ₂ max | Pt | T | Q min | Q ₀ | q ≈ |
| | mm | mm | mm | mm | mm | mm | mm | mm | mm | mm | kN | kN | Kg/m |
| 4012 | | | | | | | | | | | | | 0.16 |
| 4014 | 12.700 | 7.95 | 7.85 | 3.96 | 31.00 | 32.60 | - | 12.07 | 14.38 | 1.50 | 27.60 | 35.60 | 0.19 |
| 4016 | | | | | | | | | | | | | 0.21 |
| 5014 | | | | | | | | | | | | | 0.45 |
| 5016 | 15.875 | 10.16 | 9.40 | 5.08 | 38.90 | 40.30 | - | 15.09 | 18.11 | 2.06 | 43.60 | 56.00 | 0.52 |
| 5018 | | | | | | | | | | | | | 0.59 |
| 6018 | | | | | | | | | | | | | 1.00 |
| 6020 | 19.050 | 11.91 | 12.57 | 5.94 | 48.80 | - | 52.50 | 18.08 | 22.78 | 2.44 | 62.30 | 82.40 | 1.11 |
| 6022 | | | | | | | | | | | | | 1.22 |
| 8018 | | | | | | | | | | | | | 2.35 |
| 8020 | 25.400 | 15.88 | 15.75 | 7.92 | 62.70 | - | 67.10 | 24.13 | 29.29 | 3.26 | 111.20 | 143.00 | 2.62 |
| 8022 | | | | | | | | | | | | | 2.89 |
| 10020 | 31.750 | 19.05 | 18.90 | 9.53 | 76.40 | - | 80.50 | 30.18 | 35.76 | 4.00 | 173.50 | 204.00 | 5.28 |
| 10022 | | | | | | | | | | | | | 5.81 |
| 12018 | 38.100 | 22.23 | 25.22 | 11.10 | 96.30 | - | 101.60 | 36.20 | 45.44 | 4.80 | 249.10 | 313.80 | 8.14 |

