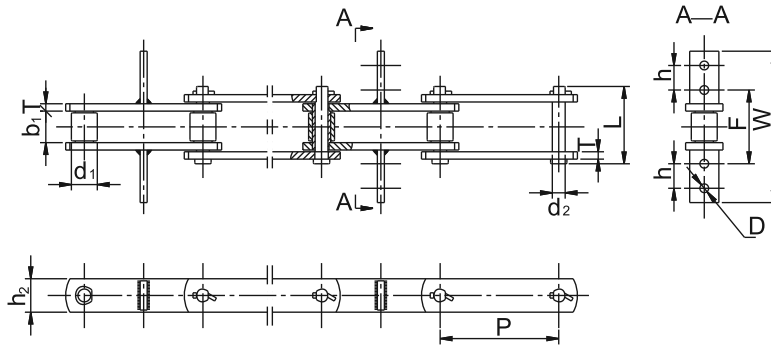




**CATENE PER TRASPORTATORI
RASCHIANTI
*WELDED CHAINS***

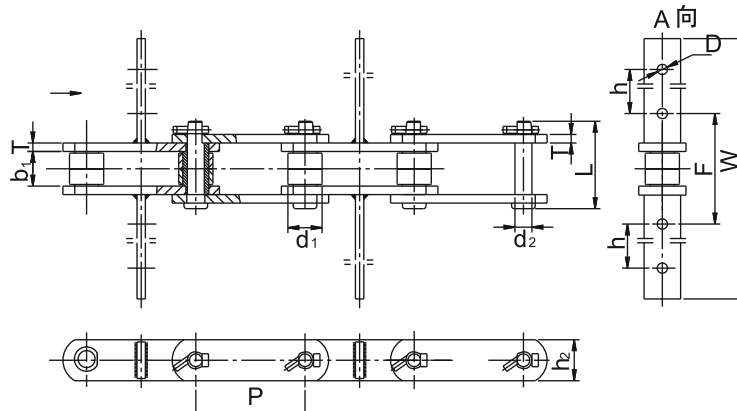
Catene per trasportatori raschianti **con pale saldate** (Tipo S, Tipo T) / **Shaving Scraper Sidebar Welded Steel Chains (S Type, T Type) Series**

Tipo S / S Type



Catena Chain	Passo Pitch	Larghezza interna Width between inner plates	Diam. Rullo Roller diameter	Altezza piastra Inner plate depth	Spessore piastra Plate thickness	Diametro Perno Pin diameter	Largh. catena ribadita Riveted chain width	Diametro foro attacco		Quote fori degli attacchi		Larghezza attacchi Att. width	Carico rottura min. Ultimate tensile strength	Carico di rottura medio Average tensile strength	Peso al metro Weight per meter
								D	F	h	W max				
HR6608-S-F20	66.27	27.00	22.20	28.60	6.30	11.00	65.70	9.50	95.60	25	180	70.60	78.50	6.10	
HR6608-S-F25									95.60	50	230			6.30	
HR6608-S-F28									95.60	50	260			6.50	
HR10108-S-F15	101.60	27.00	22.20	28.60	6.30	11.00	65.70	7.50	63.50	21	130	70.60	78.50	5.10	
HR10108-S-F20								9.50	95.60	25	180			5.30	
HR10108-S-F25									95.60	50	230			5.60	
HR10108-S-F28									95.60	50	260			5.80	

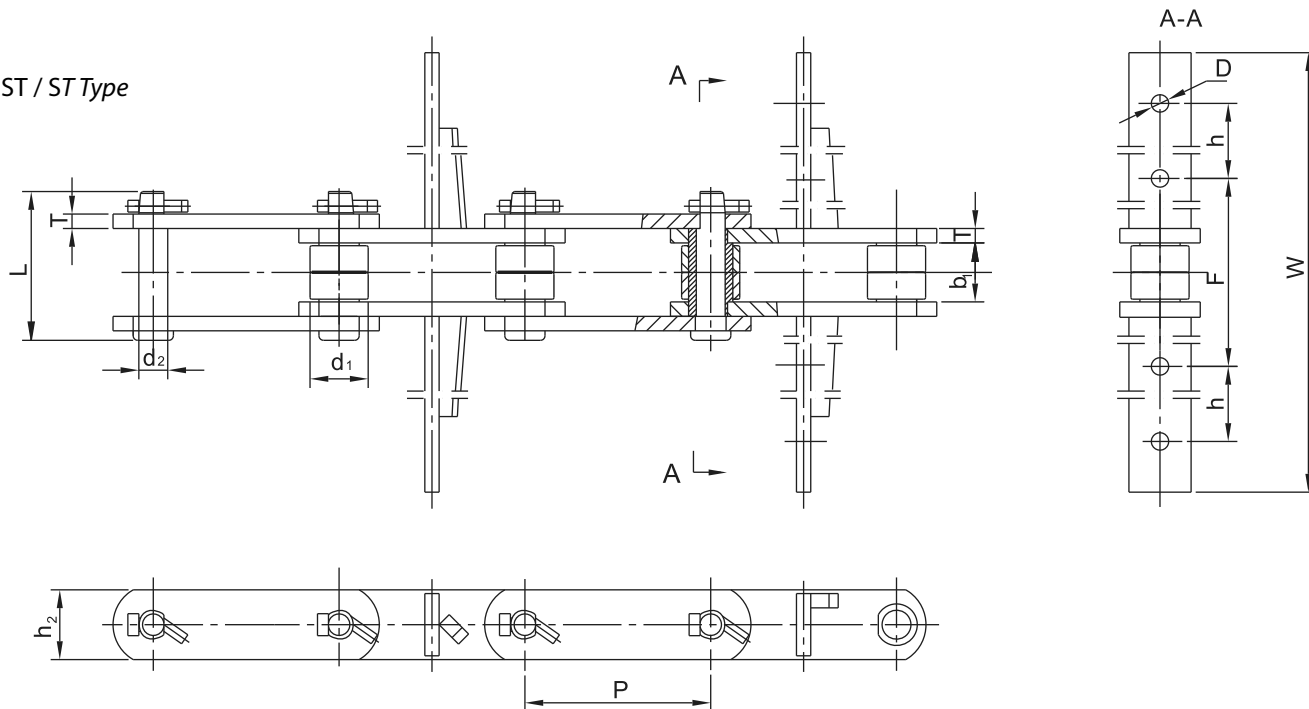
Tipo T / T Type



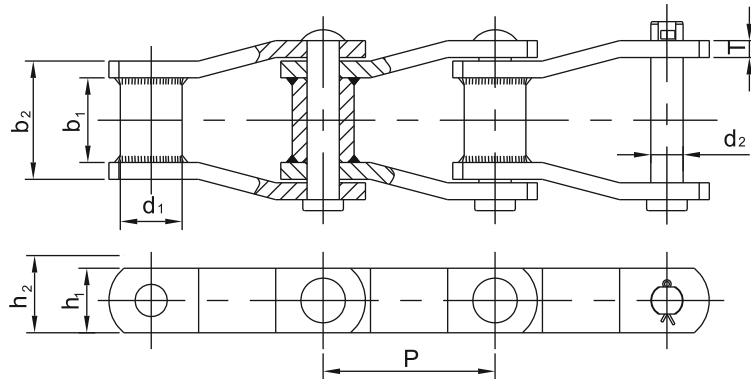
Catena Chain	Passo Pitch	Larghezza interna Width between inner plates	Diam. Rullo Roller diameter	Altezza piastra Inner plate depth	Spessore piastra Plate thickness	Diametro Perno Pin diameter	Largh. catena ribadita Riveted chain width	Diametro foro attacco		Quote fori degli attacchi		Larghezza attacchi Att. width	Carico rottura min. Ultimate tensile strength	Carico di rottura medio Average tensile strength	Peso al metro Weight per meter
								D	F	h	W max				
HR10113-T-F25	101.60	31.60	31.80	38.10	7.90	15.80	81.30	9.50	106.70	45	230	119.10	132.40	10.40	
HR10113-T-F28									102.70	50	260			10.80	
HR10113-T-F30									134.70	50	280			11.10	
HR10113-T-F35									144.70	65	330			11.20	

Catene per trasportatori raschianti con **pale saldate** (Tipo ST) / *Shaving Scraper Sidebar Welded Steel Chains (ST Type) Series*

Tipo ST / ST Type

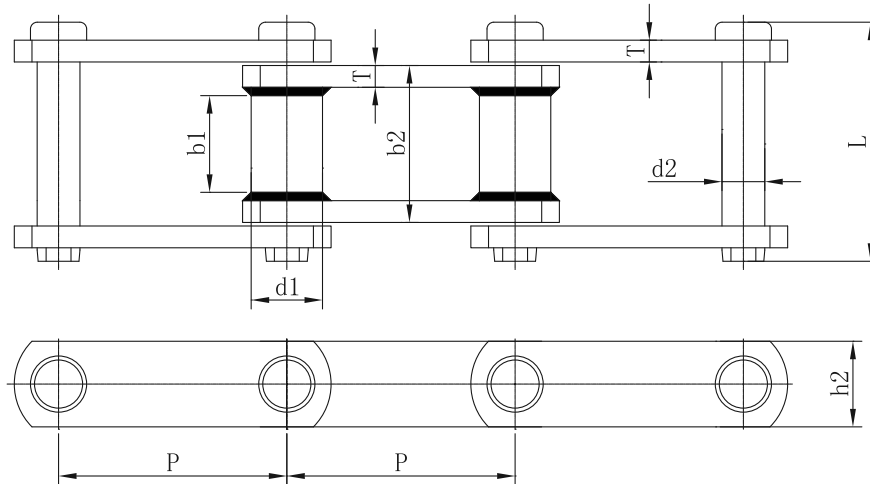


Catena Chain	Passo Pitch	Larghezza interna Width between inner plates	Diam. Rullo Roller diameter	Altezza piastra Inner plate depth	Spessore piastra Plate thickness	Diametro Perno Pin diameter	Largh. catena ribadita Riveted chain width	Diametro foro attacco Attachment hole center diameter	Diametro foro attacco Attachment hole center diameter		Larghezza attacchi Att. width	Carico rottura min. Ultimate tensile strength	Carico rottura min. Ultimate tensile strength	Peso al metro Weight per meter
	P	b_1 min	d_1 max	h_2 max	T	d_2 max	L max	D	F	h	W max	Q min	Q_0	q ≈
	mm	mm	mm	mm	mm	mm	mm	mm	mm	mm	mm	kN	kN	kg/m
HR10113-ST-F35	101.60	31.60	31.80	38.10	7.90	15.80	81.30	9.50	144.70	65	330	119.10	132.40	11.90
HR10113-ST-F40									136.70	90	380			

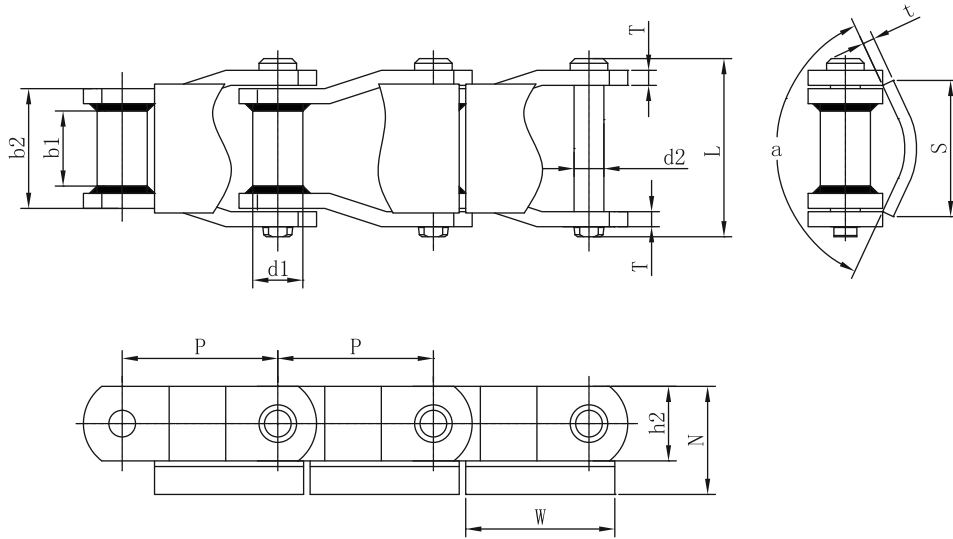
Catene a maglie false saldate / *Offset sidebar welded Steel Chains*


Catena Chain	Passo	Diametro esterno rullo	Diametro Perno	Altezza primitiva Catena	Altezza piastra	Larghezza approx sul diametro primitivo	Larghezza bussola	Spessore piastra	Carico rottura min.
	Pitch	Outer barrel diameter	Pin diameter	Chain path depth	Plate depth	Approx. tooth face at pitch line	Length of bearing	Plate thickness	Ultimate tensile strength
	P	d ₁ max	d ₂ max	h ₂ min	h ₁ min	b ₁ min	b ₂ max	T max	Q
	mm	mm	mm	mm	mm	mm	mm	mm	kN
W78	66.27	22.90	12.78	30.00	28.40	28.40	51.00	6.40	93.40
W82	78.10	31.50	14.35	33.50	31.80	31.80	57.40	6.40	100.10
W106	152.40	37.10	19.13	39.60	38.10	41.20	71.60	9.70	169.00
W110	152.40	32.00	19.13	39.60	38.10	46.70	76.50	9.70	169.00
W111	120.90	37.10	19.13	39.60	38.10	57.20	85.90	9.70	169.00
W124	101.60	37.10	19.13	39.60	38.10	41.20	71.60	9.70	169.00
W124H	103.20	41.70	22.30	52.30	50.80	41.20	76.50	12.70	275.80
W132	153.67	44.70	25.46	52.30	50.80	76.20	111.80	12.70	275.80
WH150	153.67	44.50	25.40	65.00	63.50	73.00	111.10	12.70	620.00

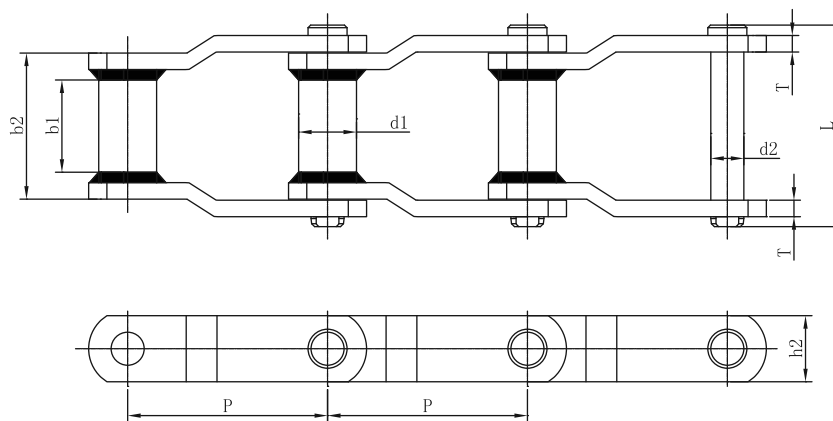
Catene con **perno saldato a piastre diritte** / *Straight Sidebar Welded Steel Chains*



Catena Chain	Passo Pitch	Diametro esterno rullo Outer barrel diameter	Larghezza interna Width between inner plates	Diametro Perno Pin diameter	Largh. catena ribadita Riveted chain width	Larghezza tra piastre esterne Width between outer plates	Altezza piastra Inner plate depth	Spessore piastra Plate thickness	Carico di rottura min. Ultimate tensile strength	Peso al metro Weight per meter
	P	d ₁ max	b ₁ min	d ₂ max	L max	b ₂ max	h ₂ max	T	Q min	q ≈
	mm	mm	mm	mm	mm	mm	mm	mm	kN	kg/m
WRC124-P101.6	101.60	31.75	38.1	19.05	107	69.85	38.1	9.7	224.3	11.87
WHC124-P101.6	101.6	31.75	38.1	19.05	107	69.85	38.1	9.7	255	11.9
WHC132IBR-P135.67	153.67	44.45	69.85	25.4	156	112	50.8	12.7	542	21.16

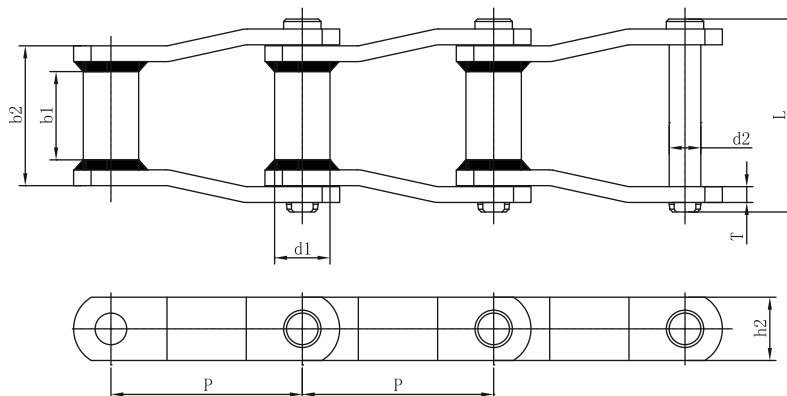
Catene a maglie false saldate / Welded **Offset Sidebar** Steel Chains


Catena Chain	Passo	Diametro esterno rullo	Larghezza interna	Diametro Perno	Largh. catena ribadita	Larghezza tra piastre esterne	Dimensione degli attacchi				Altezza piastra	Spessore piastra	Carico di rottura min.	Peso al metro
	Pitch	Outer barrel diameter	Width between inner plates	Pin diameter	Riveted chain width	Width between outer plates	Attachments dimensions				Inner plate depth	Plate thickness	Ultimate tensile strength	Weight per meter
	P mm	d ₁ max mm	b ₁ min mm	d ₂ max mm	L max mm	b ₂ max mm	a /	A mm	W mm	N mm	h ₂ max mm	T/t mm	Q min kN	q ≈ kg/m
WR78U-P66.27	66.27	21.34	25.4	12.7	75	51	130°	58	63.5	46.03	31.75	6.4/5	133.5	8.73

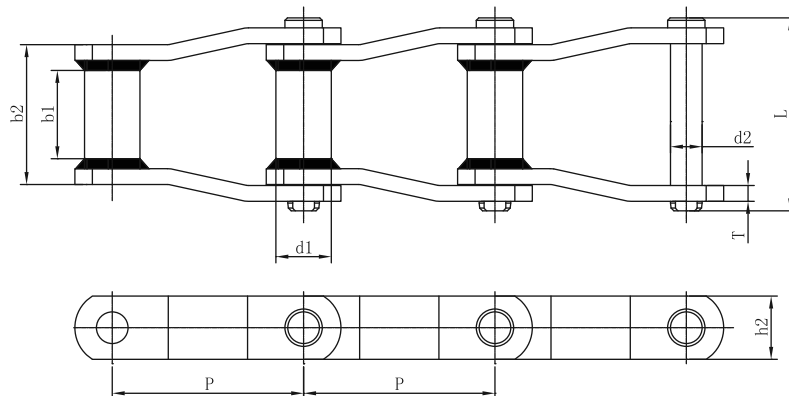


Catena Chain	Passo	Diametro esterno rullo	Larghezza interna	Diametro Perno	Largh. catena ribadita	Larghezza tra piastre esterne	Altezza piastra	Spessore piastra	Carico di rottura min.	Peso al metro
	Pitch	Outer barrel diameter	Width between inner plates	Pin diameter	Riveted chain width	Width between outer plates	Inner plate depth	Plate thickness	Ultimate tensile strength	Weight per meter
	P mm	d ₁ max mm	b ₁ min mm	d ₂ max mm	L max mm	b ₂ max mm	h ₂ max mm	T/t mm	Q min kN	q ≈ kg/m
WH150-P153.67	153.67	44.45	76.2	25.4	156	112	63.5	12.7	660	24.87
WR150-P153.67	153.67	44.45	76.2	25.4	156	112	63.5	12.7	542	25.05

Catene a maglie false saldate / Welded **Offset Sidebar** Steel Chains

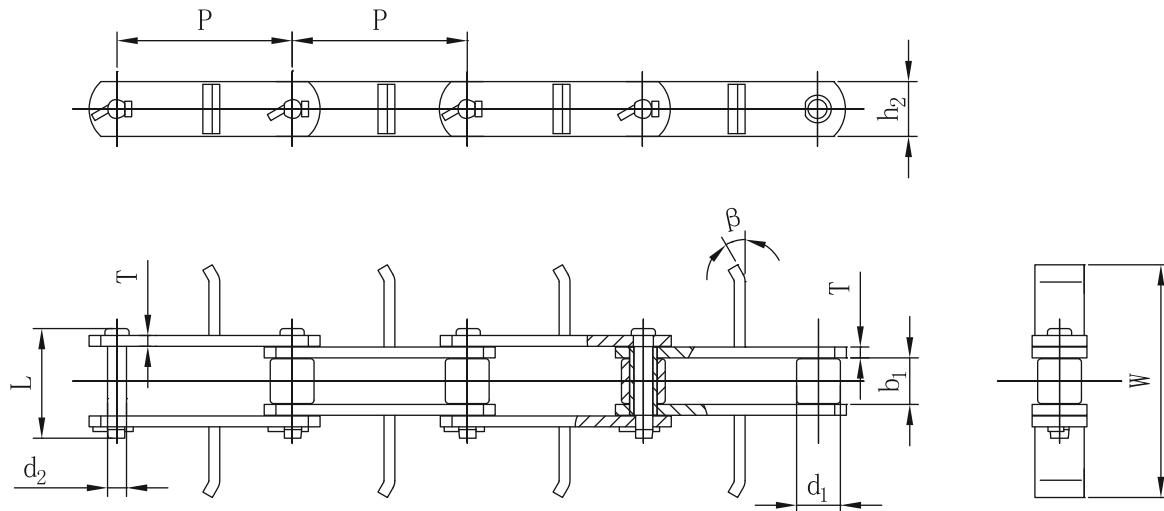


Catena Chain	Passo Pitch	Diametro esterno rullo Outer barrel diameter	Larghezza interna Width between inner plates	Diametro Perno Pin diameter	Largh. catena ribadita Riveted chain width	Larghezza tra piastre esterne Width between outer plates	Altezza piastra Inner plate depth	Spessore piastra Plate thickness	Carico di rottura min. Ultimate tensile strength	Peso al metro Weight per meter
	P	d ₁ max	b ₁ min	d ₂ max	L max	b ₂ max	h ₂ max	T	Q min	q ≈
	mm	mm	mm	mm	mm	mm	mm	mm	kN	kg/m
WH78-P66.27	66.27	21.34	25.4	12.7	75	51	31.75	6.4	147	6.44
WR78-P66.27	66.27	21.34	25.4	12.7	75	51	31.75	6.4	133.5	6.45
WR78XHD-P66.95	66.95	25.4	25.4	14.29	82	50.8	31.75	9.5	178	9.21
WH82-P78.1	78.1	25.4	28.7	14.29	82.3	57.15	31.75	6.4	160	7.24
WR82-P78.1	78.1	25.4	28.7	14.29	82.3	57.15	31.75	6.4	160	7.27
WH82XHD-P78.1	78.1	31.75	28.7	19.05	96.5	60.5	38.1	9.7	254	12.73
WR82XHD-P78.1	78.1	31.75	28.7	19.05	96.5	60.5	38.1	9.7	224.3	12.76
WH124-P101.6	101.6	31.75	38.1	19.05	107	69.9	38.1	9.7	255	11.91
WH124IBR-P101.6	101.6	31.75	38.1	19.05	107	69.85	38.1	9.7	255	11.91
WR124-P101.6	101.6	31.75	38.1	19.05	107	69.9	38.1	9.7	224.3	11.91
WH124XHD-P103.2	103.2	44.45	38.1	25.4	119.5	76.2	50.8	12.7	542	22.13
WR124XHD-P103.2	103.2	44.45	38.1	25.4	119.5	76.2	50.8	12.7	308.5	22.15
WH111-P120.9	120.9	31.75	57.15	19.05	119.2	86.2	44.45	9.7	268	13.68
WH110-P152.4	152.4	31.75	47.62	19.05	113.35	76.2	38.1	9.7	250	10.12
WH106-P152.4	152.4	31.75	38.1	19.05	107	69.85	38.1	9.7	268	9.87
WR106-P152.4	152.4	31.75	38.1	19.05	107	69.85	38.1	9.7	224.3	9.85
WH132-P153.67	153.67	44.45	69.85	25.4	156	112.3	50.8	12.7	542	21.19
WR132-P153.67	153.67	44.45	69.85	25.4	156	112.3	50.8	12.7	380.5	21.25
WH132XHD-P153.67	153.67	44.45	69.85	25.4	168.86	118.6	50.8	15.88	543	24.73
WR132XHD-P153.67	153.67	44.45	69.85	25.4	168.86	118.6	50.8	15.88	472	24.86
WH132IBR-P153.67	153.67	44.45	69.85	25.4	156	112	50.8	12.7	542	21.18

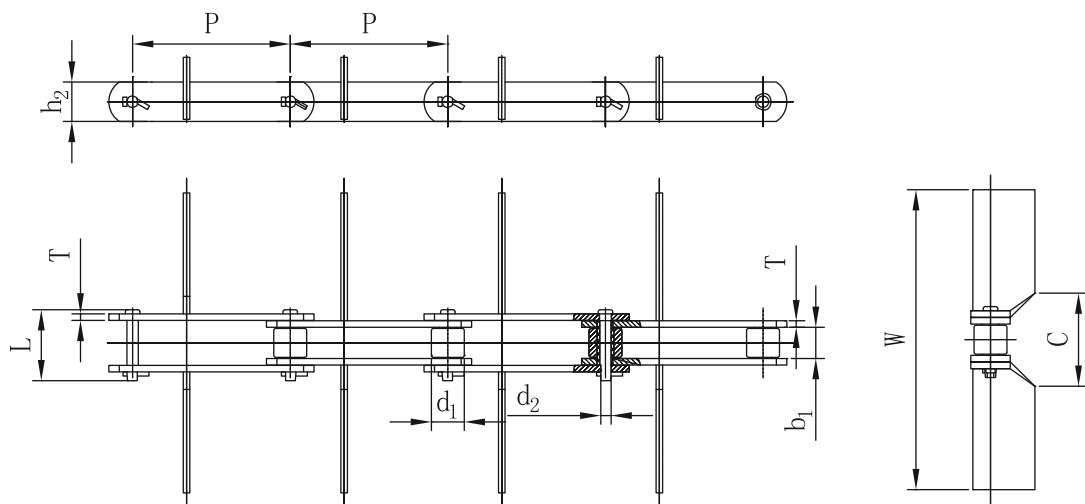
Catene a maglie false saldate / *Welded Offset Sidebar Steel Chains*


Catena Chain	Passo	Larghezza interna	Diametro Perno	Largh. catena ribadita	Larghezza tra piastre esterne	Altezza piastra	Spessore piastra	Carico di rottura min.	Peso al metro
	Pitch	Width between inner plates	Pin diameter	Riveted chain width	Width between outer plates	Inner plate depth	Plate thickness	Ultimate tensile strength	Weight per meter
	P	b_1 min	d_2 max	L max	b_2 max	h_2 max	T	Q min	q ≈
	mm	mm	mm	mm	mm	mm	mm	kN	kg/m
WD110-P152.4	152.4	228.6	19.05	296	260.35	38.1	9.7	227	18.05
WDH110-P152.4	152.4	228.6	19.05	296	260.35	38.1	9.7	379	18.05
WD116-P203.2	203.2	330.2	19.05	395	358.78	44.45	9.53	227	21.82
WD120-P152.4	152.4	222.25	22.23	301.6	260.35	50.8	12.7	315	32.19
WDH120-P152.4	152.4	222.25	22.23	301.6	260.35	50.8	12.7	379	32.19
WD480-P203.2	203.2	279.4	22.23	366.9	323.85	50.8	12.7	315	29.52
WDH480-P203.2	203.2	279.4	22.23	366.9	323.85	50.8	12.7	380	29.52
WDRS480-SH-P203.2	203.2	279.4	25.4	368.15	323.85	50.8	12.7	380	30.8
WDRS480XHD-SH-P203.2	203.2	279.4	25.4	380.85	330.2	50.8	15.88	543	33.77
WD480XHD-P203.2	203.2	279.4	25.4	380.85	330.2	50.8	15.88	543	33.77
WD580-P203.2	203.2	/	25.4	368.3	323.85	50.8	12.7	314	30.78
WDH580-P203.2	203.2	/	25.4	368.3	323.85	50.8	12.7	547	30.78

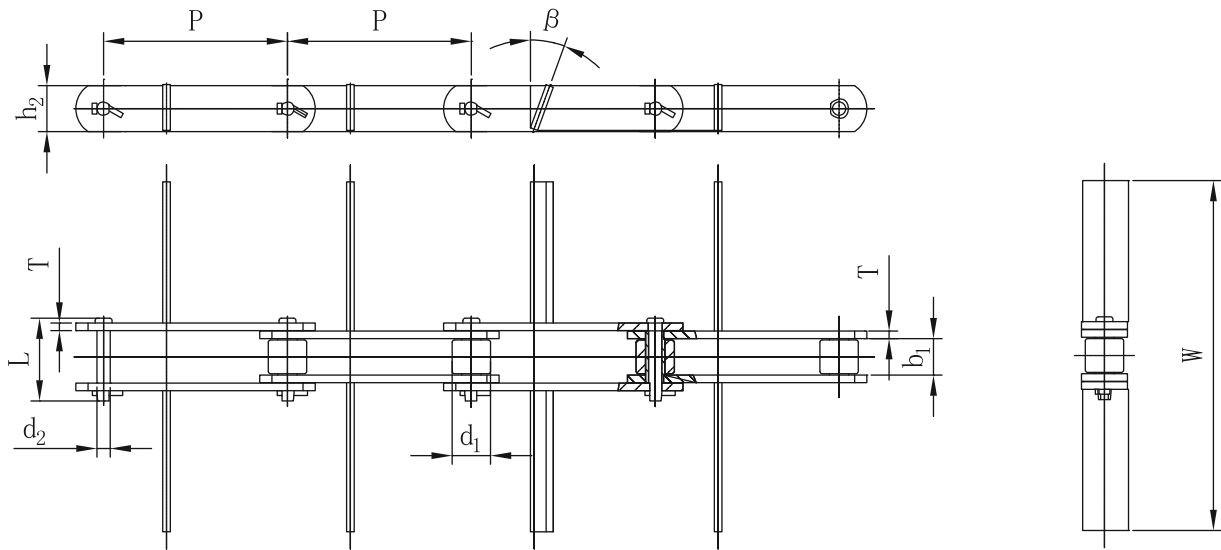
Catene per trasportatori raschianti con **pale saldate** / *Welded **Scraper Sidebar** Steel Chains*



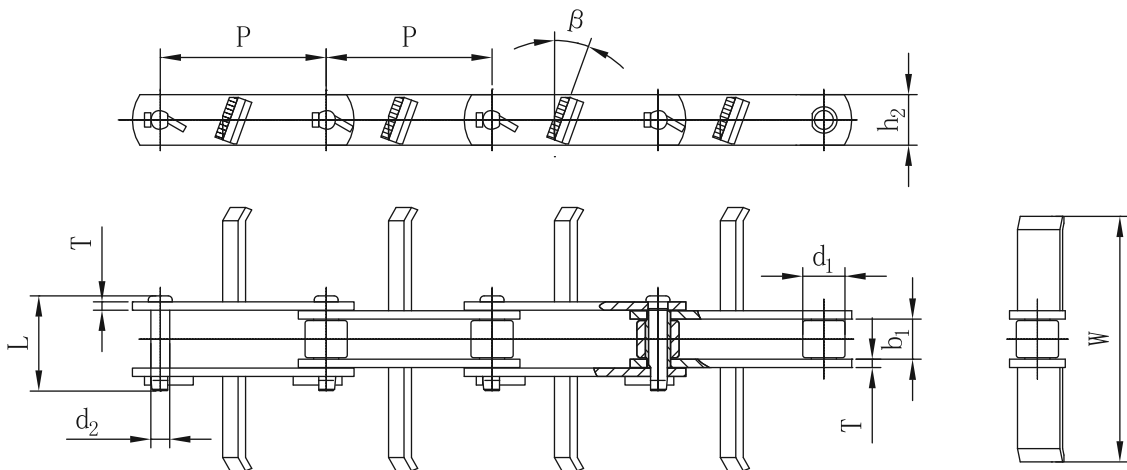
Catena Chain	Passo Pitch	Dimensioni Dimensions								Carico di rottura min. Ultimate tensile strength	Carico di rottura medio Average tensile strength	Peso al metro Weight per meter
	P	d _{1 max}	d _{2 max}	b _{1 min}	W max	h ₂	L max	T	β	Q _{min}	Q ₀	q _≈
	mm	mm	mm	mm	mm	mm	mm	mm	/	kN	kN	kg/m
HC10110-M	101.6	25.4	11	27	135	31.8	65.7	6.3	30°	127.98	142.2	6.28



Catena Chain	Passo Pitch	Dimensioni Dimensions								Carico di rottura min. Ultimate tensile strength	Carico di rottura medio Average tensile strength	Peso al metro Weight per meter
	P	d _{1 max}	d _{2 max}	b _{1 min}	W max	h ₂	L max	T	C	Q _{min}	Q ₀	q _≈
	mm	mm	mm	mm	mm	mm	mm	mm	mm	kN	kN	kg/m
HC15211-M	152.4	31.8	11	30.2	290	38.1	68.9	6.3	90	101.3	113	10.23

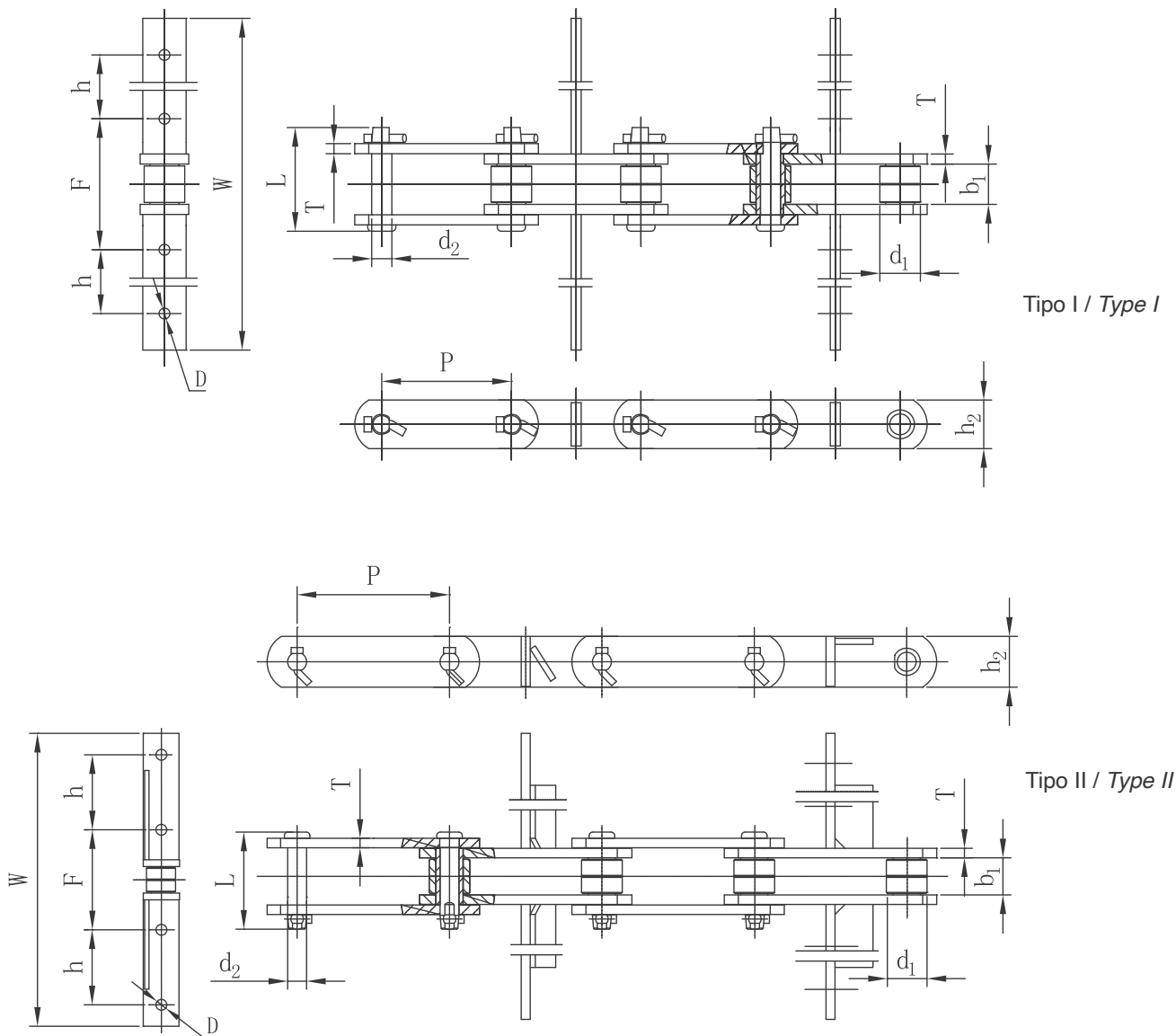
Catene per trasportatori raschianti con **pale saldate** / *Welded **Scraper Sidebar** Steel Chains*


Catena Chain	Passo Pitch	Dimensioni Dimensions								Carico di rottura min. Ultimate tensile strength	Carico di rottura medio Average tensile strength	Peso al metro Weight per meter
	P	d ₁ max	d ₂ max	b ₁ min	W max	h ₂	L max	T	β	Q _{min}	Q ₀	q _≈
	mm	mm	mm	mm	mm	mm	mm	mm	/	kN	kN	kg/m
HC15211-Ma	152.4	31.8	11	30.2	290	38.1	68.9	6.3	20°	101.3	113	8.89

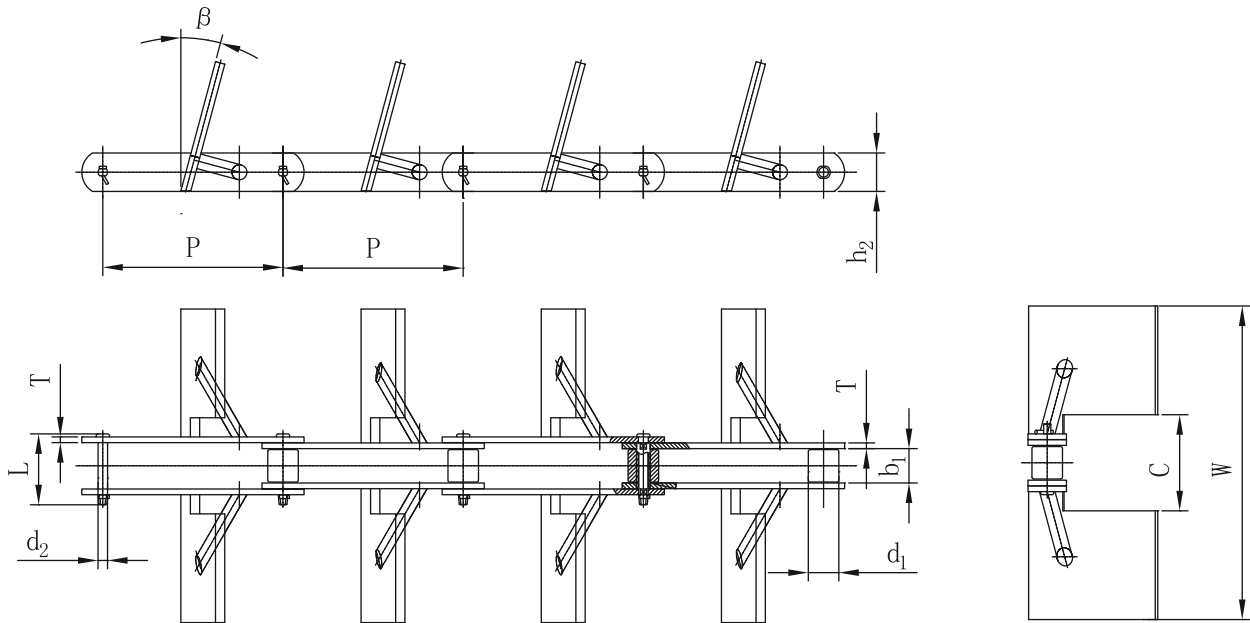


Catena Chain	Passo Pitch	Dimensioni Dimensions								Carico di rottura min. Ultimate tensile strength	Carico di rottura medio Average tensile strength	Peso al metro Weight per meter
	P	d ₁ max	d ₂ max	b ₁ min	W max	h ₂	L max	T	β	Q _{min}	Q ₀	q _≈
	mm	mm	mm	mm	mm	mm	mm	mm	mm	kN	kN	kg/m
HR12511-M	125	31.8	14.21	30	185	38.1	72.2	6.3	20°	203	225.6	8.28

Catene per trasportatori raschianti con **pale saldate** / **Welded *Scraper Sidebar* Steel Chains**



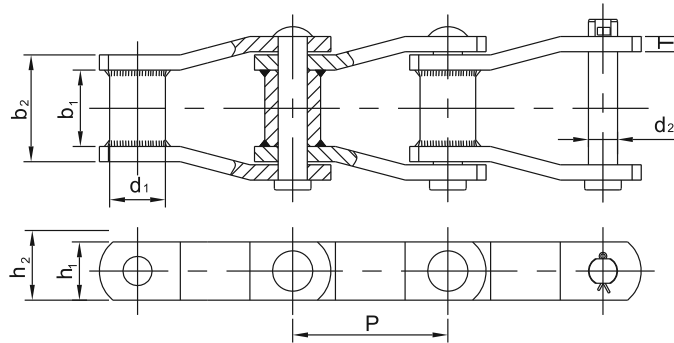
Catena Chain	Passo Pitch	Dimensioni Dimensions										Carico di rottura min.	Carico di rottura medio	Peso al metro	Tipo Type	
		P	d ₁ max	d ₂ max	b ₁ min	W max	h ₂	L max	T	D	h	F	Q _{min}	Q ₀		q ≈
		mm	mm	mm	mm	mm	mm	mm	mm	mm	mm	mm	kN	kN		kg/m
HR15219-S-F35	152.4	40.7	18.9	37.1	330	50.8	97.1	9.5	8.5	65	140	220.6	245.2	15.98	I	
HR15219-ST-F43					410					105				18.35	II	

Catene per trasportatori raschianti con **pale saldate** / *Welded **Scraper Sidebar** Steel Chains*


Catena Chain	Passo Pitch	Dimensioni Dimensions									Carico di rottura min. Ultimate tensile strength	Carico di rottura medio Average tensile strength	Peso al metro Weight per meter
	P	d ₁ max	d ₂ max	b ₁ min	W max	h ₂	L max	T	β	C	Q min	Q ₀	q ≈
	mm	mm	mm	mm	mm	mm	mm	mm		mm	kN	kN	kg/m
P300	300	50.8	21	57.2	522	64	117.9	9.5	15°	160	467.82	519.8	49.86

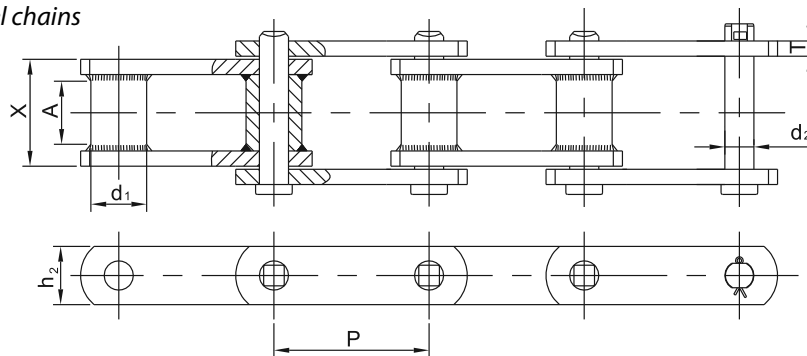
Catene a maglie false saldate / Welded Offset Sidebar Steel Chain

Catene a maglie false saldate
Offset sidebar welded steel chains



Catena Chain	Passo Pitch	Diametro esterno rullo Outer roller diameter	Diametro Perno Pin diameter	Altezza primitiva Catena Chain path depth	Altezza piastra Plate depth	Larghezza approx sul diametro primitivo Approx. tooth face at pitch line	Larghezza bussola Bush Length	Spessore piastra Plate thickness	Carico rottura min. Ultimate tensile strength
	P	d ₁ max	d ₂ max	h ₂ min	h ₁ min	b ₁ min	b ₂ max	T max	Q
	mm	mm	mm	mm	mm	mm	mm	mm	kN
W78 INOX	66.27	22.90	12.78	30.00	28.40	28.40	51.00	6.40	93.40
W82 INOX	78.10	31.50	14.35	33.50	31.80	31.80	57.40	6.40	100.10
W106 INOX	152.40	37.10	19.13	39.60	38.10	41.20	71.60	9.70	169.00
W110 INOX	152.40	32.00	19.13	39.60	38.10	46.70	76.50	9.70	169.00
W111 INOX	120.90	37.10	19.13	39.60	38.10	57.20	85.90	9.70	169.00
W124 INOX	101.60	37.10	19.13	39.60	38.10	41.20	71.60	9.70	169.00
W124H INOX	103.20	41.70	22.30	52.30	50.80	41.20	76.50	12.70	275.80
W132 INOX	153.67	44.70	25.46	52.30	50.80	76.20	111.80	12.70	275.80
WH150 INOX	153.67	44.50	25.40	65.00	63.50	73.00	111.10	12.70	620.00

Catene a piastre diritte saldate
Straight sidebar welded steel chains



Catena Chain	Passo Pitch	Diametro esterno rullo Outer roller diameter	Diametro Perno Pin diameter	Larghezza bussola Bush width	Larghezza approx sul diametro primitivo Approx. tooth face at pitch line	Altezza piastra Plate depth	Spessore piastra Plate thickness	Carico rottura min. Ultimate tensile strength
	P	d ₁ max	d ₂ max	X	A min	h ₂ min	T max	Q
	mm	mm	mm	mm	mm	mm	mm	kN
WRC-78 INOX	66.27	22	12.70	50	28	28	6	107
WRC-82 INOX	78.10	27	14.29	57	32	32	6	115
WRC-124 INOX	101.60	32	19.05	71	43	40	10	225
WRC-132 INOX	153.67	45	25.40	110	73	50	12	380



INDUSTRIES