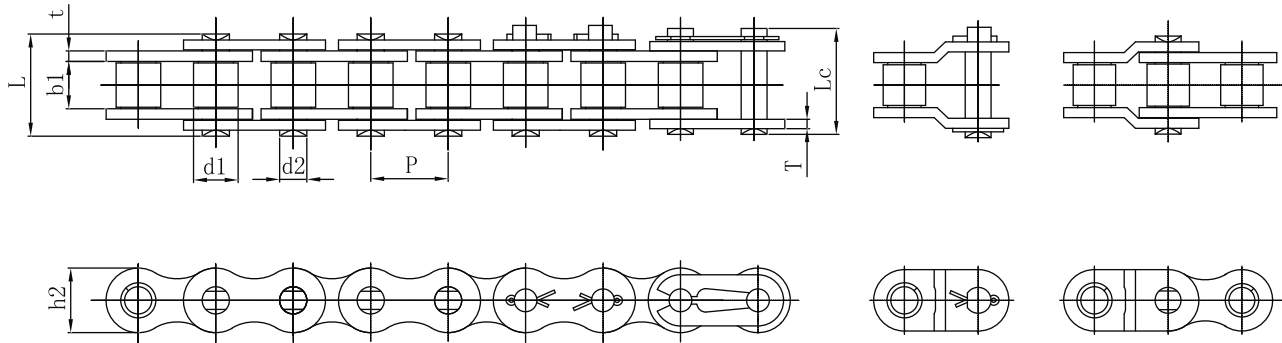




**CATENE A RULLI PER TRASMISSIONE E  
TRASPORTO LEGGERO  
*DRIVING CHAINS***

| Prodotto<br><i>Product</i>         | Catena a Rulli<br><i>Roller Chain</i>   | Nota<br><i>Note</i>   |
|------------------------------------|---|---|
| Elemento<br><i>Component</i>       | Giunto a ribadire<br><i>Pin link (Rivet type)</i>   |   |
|                                    | Giunto con copiglia<br><i>Pin link (Cotter type)</i>  | Serraggio elevato della piastra mediante le 2 copiglie<br><i>Fit plate tightly against 2 pins</i>       |
|                                    | Maglia interna<br><i>Roller link</i>  |   |
| Pezzo<br><i>Part</i>               | Perno<br><i>Pin</i>   |   |
|                                    | Bussola<br><i>Bush</i>  |   |
|                                    | Rullo<br><i>Roller</i>  |   |
|                                    | Maglia esterna<br><i>Pin link plate (outer link plate)</i>  |   |
|                                    | Maglia interna<br><i>Roller link plate (inner link plate)</i>   |   |
| Giunto<br><i>Connecting link</i>   | Giunto con 2 copiglie<br><i>Connecting link with 2 Cotters</i>  | Indicata per passi $\geq 25,4$ mm<br><i>Suggest: <math>P \geq 25.4</math> mm</i>                        |
|                                    | Giunto con molletta<br><i>Connecting link with a Spring Clip</i>  | Indicata per passi $< 19,05$ mm<br><i>Suggest: <math>P &lt; 19,05</math> mm</i>                         |
|                                    | Giunto rinforzato con 2 copiglie<br><i>Connecting link with 2 Cotters (Fit Connecting Plate Tightly Against 2 Pins)</i> | Indicata per carichi elevati<br><i>Used for high power</i>  |
| Maglia falsa<br><i>Offset link</i> | Falsa maglia con copiglia<br><i>Offset link</i>   | Non indicata per carichi elevati e alta velocità<br><i>Not to be used for heavy Duty and high speed</i> |
|                                    | Falsa maglia a tre rulli<br><i>Offset link with three rollers</i>   |   |

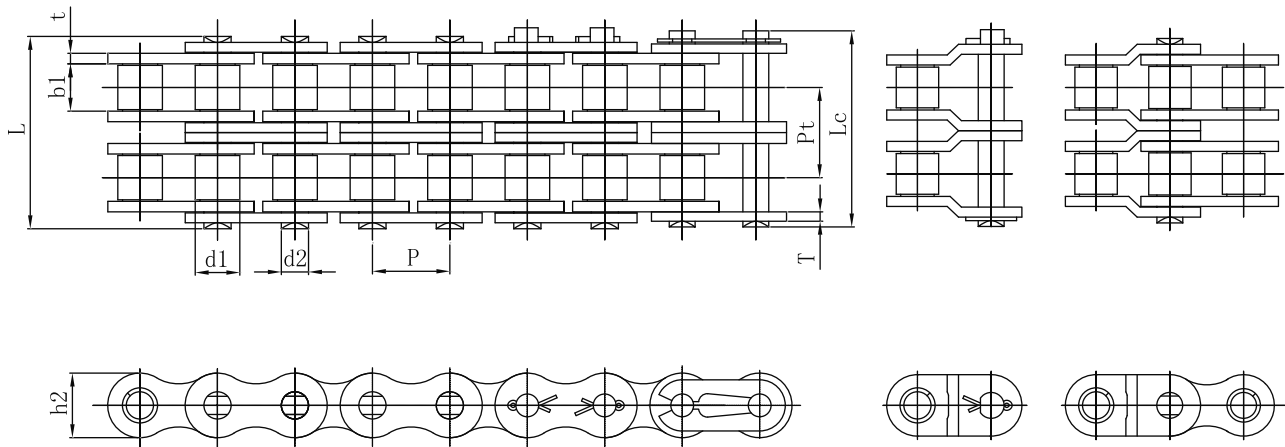
Catene a rulli semplici ISO / *Single Strand Roller Chains ISO*



SERIE EUROPEA ISO DIN / EUROPEAN SERIES ISO DIN

| Catena<br>ISO/<br>DIN<br><br>ISO/<br>DIN<br>Chain | Passo<br><i>Pitch</i> |        | Diam.<br>Rullo<br><br><i>Roller<br/>diameter</i> | Larghezza<br>interna<br><br><i>Width<br/>between<br/>inner<br/>plates</i> | Diametro<br>Perno<br><br><i>Pin<br/>diameter</i> | Largh.<br>catena<br>ribadita<br><br><i>Riveted<br/>chain<br/>width</i> |           | Altezza<br>piastra<br><br><i>Inner<br/>plate<br/>depth</i> | Spessore<br>piastra<br><br><i>Plate<br/>thickness</i> | Passo<br>trasv.<br><br><i>Transverse<br/>pitch</i> | Carico di<br>rottura<br>min.<br><br><i>Ultimate<br/>tensile<br/>strength</i> | Carico<br>di<br>rottura<br>medio<br><br><i>Average<br/>tensile<br/>strength</i> | Peso al<br>metro<br><br><i>Weight<br/>per<br/>meter</i> |
|---|-----------------------|--------|--|---|--|--|-----------|--|---|--|--|---|---|
|   | P                     | P      | d <sub>1</sub><br>max                            | b <sub>1</sub><br>min   | d <sub>2</sub><br>max                            | L<br>max   | Lc<br>max | h <sub>2</sub><br>max                                      | t/T   | Pt   | Q(ISO/<br>DIN)<br>min  | Q <sub>0</sub>  | q<br>≈  |
|   | pollici               | mm     | mm   | mm  | mm   | mm   | mm        | mm   | mm  | mm   | kN   | kN  | kg/m  |
| 04B1  | P6                    | 6,00   | 4,00   | 2,80  | 1,85   | 7,40   | -         | 5,00   | -   | -  | -  | 2,90  | 0,08  |
| 05B1  | P8                    | 8.00   | 5.00   | 3.00  | 2.31   | 8.20   | 8.90      | 7.10   | 0.80  | -  | 4.40/5.00  | 5.90  | 0.20  |
| *06B1   | 3/8                   | 9.525  | 6.35   | 5.72  | 3.28   | 13.15  | 15.15     | 8.26   | 1.34  | -  | 8.90/9.00  | 10.30   | 0.41  |
| 08B1  | 1/2x5/16              | 12.70  | 8.51   | 7.75  | 4.45   | 16.95  | 19.05     | 11.81  | 1.60  | -  | 17.80/18.00  | 19.60   | 0.69  |
| 10B1  | 5/8                   | 15.875 | 10.16  | 9.65  | 5.08   | 19.50  | 22.0      | 14.73  | 1.70  | -  | 22.20/22.40  | 27.50   | 0.93  |
| 12B1  | 3/4                   | 19.05  | 12.07  | 11.68   | 5.72   | 22.50  | 25.10     | 16.13  | 1.85  | -  | 28.90/29.00  | 33.30   | 1.15  |
| 16B1  | 1"                    | 25.40  | 15.88  | 17.02   | 8.28   | 36.10  | 41.50     | 21.08  | 4.09/3.10   | -  | 60.00  | 71.00   | 2.71  |
| 20B1  | 1"1/4                 | 31.75  | 19.05  | 19.58   | 10.19  | 42.40  | 47.60     | 26.42  | 4.60/3.60   | -  | 95.00  | 101.80  | 3.70  |
| 24B1  | 1"1/2                 | 38.10  | 25.40  | 25.40   | 14.63  | 53.40  | 57.10     | 33.40  | 5.80/4.80   | -  | 160.00   | 176.00  | 7.10  |
| 28B1  | 1"3/4                 | 44.45  | 27.94  | 30.99   | 15.90  | 65.10  | 69.40     | 37.08  | 7.50/6.50   | -  | 200.00   | 215.60  | 8.50  |
| 32B1  | 2"                    | 50.80  | 29.21  | 30.99   | 17.81  | 66.00  | 69.50     | 42.29  | 7.00/6.00   | -  | 250.00   | 280.30  | 10.25   |
| 40B1  | 2"1/2                 | 63.50  | 39.37  | 38.10   | 22.89  | 82.60  | 91.30     | 52.96  | 8.50/7.50   | -  | 355.00   | 392.00  | 16.35   |
| 48B1  | 3"                    | 76.20  | 48.26  | 45.72   | 29.24  | 99.10  | 109.60    | 63.88  | 11.70/10.00   | -  | 560.00   | 599.20  | 25.00   |
| 56B1  | 3"1/2                 | 88.90  | 53.98  | 53.34   | 34.32  | 114.6  | 123.0     | 77.80  | 13.5/12.0   | -  | 850.00   | 940.0   | 35.78   |
| 64B1  | 4"                    | 101.60 | 63.50  | 60.96   | 39.40  | 130.0  | 138.5     | 90.17  | 15.0/13.0   | -  | 1120.0   | 1240.0  | 46.00   |
| 72B1  | 4"1/2                 | 114.30 | 72.39  | 68.58   | 44.48  | 147.4  | 156.4     | 103.60   | 17.0/15.0   | -  | 1400.0   | 1550.0  | 60.80   |

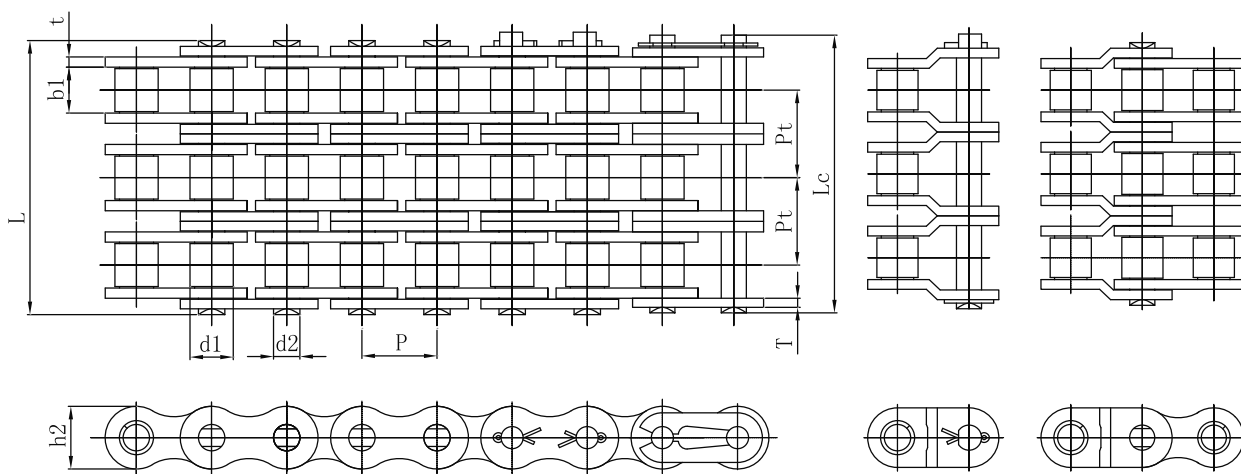
\*Con piastre a profilo diritto / \*Straight side plates

**Catene a rulli doppie ISO / Double Strand Roller Chains ISO**

**SERIE EUROPEA ISO DIN / EUROPEAN SERIES ISO DIN**

| Catena<br>ISO/DIN<br><br>ISO/DIN<br>Chain | Passo<br><i>Pitch</i> |        | Diam.<br>Rullo<br><i>Roller<br/>diameter</i> | Larghezza<br>interna<br><i>Width<br/>between<br/>inner<br/>plates</i> | Diametro<br>Perno<br><i>Pin<br/>diameter</i> | Largh.<br>catena<br>ribadita<br><i>Riveted<br/>chain<br/>width</i> |           | Altezza<br>piastra<br><i>Inner<br/>plate<br/>depth</i> | Spessore<br>piastra<br><i>Plate<br/>thickness</i> | Passo<br>trasv.<br><i>Transverse<br/>pitch</i> | Carico di<br>rottura<br>min.<br><i>Ultimate<br/>tensile<br/>strength</i> | Carico di<br>rottura<br>medio<br><i>Average<br/>tensile<br/>strength</i> | Peso al<br>metro<br><i>Weight<br/>per<br/>meter</i> |
|---|-----------------------|--------|--|---|--|--|-----------|--|---|--|--|--|---|
|   | P                     | P      | d <sub>1</sub><br>max                        | b <sub>1</sub><br>min   | d <sub>2</sub><br>max                        | L<br>max   | Lc<br>max | h <sub>2</sub><br>max                                  | t/T   | Pt   | Q(ISO/<br>DIN)<br>min  | Q <sub>0</sub>   | q<br>≈  |
|   | pollici               | mm     | mm   | mm  | mm   | mm   | mm        | mm   | mm  | mm   | mm   | kN   | kN  |
| 04B2                                      | P6                    | 6,00   | 4,00   | 2,80  | 1,85   | 13,30  | -         | 5,00   | -   | 5,50   | -  | 5,80   | 0,23  |
| 05B2                                      | P8                    | 8,00   | 5,00   | 3,00  | 2,31   | 13,90  | 14,50     | 7,10   | 0,80  | 5,64   | 7,80   | 10,20  | 0,33  |
| *06B2                                     | 3/8                   | 9,525  | 6,35   | 5,72  | 3,28   | 23,40  | 27,10     | 8,26   | 1,34  | 10,24  | 16,90  | 18,10  | 0,74  |
| 08B2                                      | 1/2x5/16              | 12,70  | 8,51   | 7,75  | 4,45   | 31,00  | 33,00     | 11,81  | 1,60  | 13,92  | 31,10/32,00  | 37,40  | 1,34  |
| 10B2                                      | 5/8                   | 15,875 | 10,16  | 9,65  | 5,08   | 36,10  | 38,60     | 14,73  | 1,70  | 16,59  | 44,50  | 54,20  | 1,84  |
| 12B2                                      | 3/4                   | 19,05  | 12,07  | 11,68   | 5,72   | 42,00  | 44,40     | 16,13  | 1,85  | 19,46  | 57,80  | 66,60  | 2,31  |
| 16B2                                      | 1"                    | 25,40  | 15,88  | 17,02   | 8,28   | 68,00  | 73,40     | 21,08  | 4,09/3,10   | 31,88  | 106,00   | 126,50   | 5,42  |
| 20B2                                      | 1"1/4                 | 31,75  | 19,05  | 19,58   | 10,19  | 79,70  | 83,60     | 26,42  | 4,60/3,60   | 36,45  | 170,00   | 210,00   | 7,20  |
| 24B2                                      | 1"1/2                 | 38,10  | 25,40  | 25,40   | 14,63  | 101,80   | 105,42    | 33,40  | 5,80/4,80   | 48,36  | 280,00   | 305,50   | 13,40   |
| 28B2                                      | 1"3/4                 | 44,45  | 27,94  | 30,99   | 15,90  | 124,70   | 128,96    | 37,08  | 7,50/6,50   | 59,56  | 360,00   | 390,50   | 16,60   |
| 32B2                                      | 2"                    | 50,80  | 29,21  | 30,99   | 17,81  | 124,60   | 128,05    | 42,29  | 7,00/6,00   | 58,55  | 450,00   | 487,50   | 21,00   |
| 40B2                                      | 2"1/2                 | 63,50  | 39,37  | 38,10   | 22,89  | 154,50   | 163,80    | 52,96  | 8,50/7,50   | 72,29  | 630,00   | 680,20   | 32,00   |
| 48B2                                      | 3"                    | 76,20  | 48,26  | 45,72   | 29,24  | 190,40   | 200,90    | 63,88  | 11,70/10,00                                       | 91,21  | 1000,00  | 1070,00  | 50,00   |
| 56B2                                      | 3"1/2                 | 88,90  | 53,98  | 53,34   | 34,32  | 221,2  | 229,6     | 77,80  | 13,5/12,0   | 106,6  | 1600,00  | 1760,00  | 71,48   |
| 64B2                                      | 4"                    | 101,60 | 63,50  | 60,96   | 39,40  | 249,9  | 258,4     | 90,17  | 15,0/13,0   | 119,89   | 2000,0   | 2200,00  | 91,00   |
| 72B2                                      | 4"1/2                 | 114,30 | 72,39  | 68,58   | 44,48  | 283,7  | 292,7     | 103,60   | 17,0/15,0   | 136,27   | 2500,0   | 2750,00  | 120,40  |

\*Con piastre a profilo diritto / \*Straight side plates

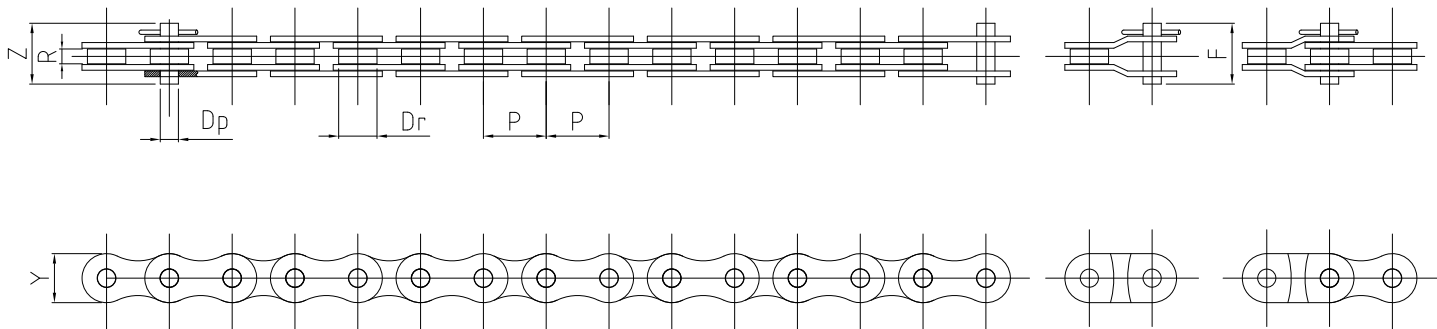
Catene a rulli triple ISO / Triple Strand Roller Chains ISO



SERIE EUROPEA ISO DIN / EUROPEAN SERIES ISO DIN

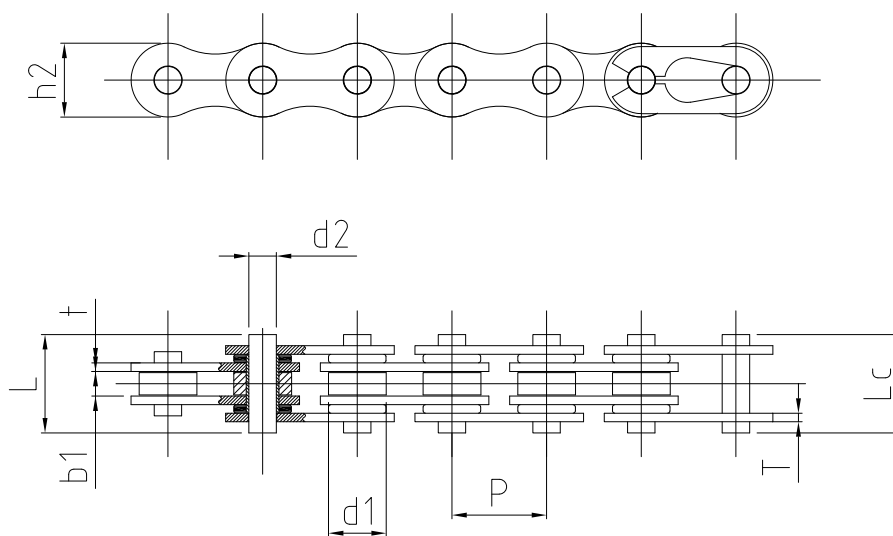
| Catena ISO/DIN<br>ISO/DIN Chain | Passo<br>Pitch |        | Diam. Rullo<br>Roller diameter | Largh. interna<br>Width between inner plates | Diametro Perno<br>Pin diameter | Largh. catena ribadita<br>Riveted chain width |        | Altezza piastra<br>Inner plate depth | Spessore piastra<br>Plate thickness | Passo trasv.<br>Transverse pitch | Carico di rottura min.<br>Ultimate tensile strength | Carico di rottura medio<br>Average tensile strength | Peso al metro<br>Weight per meter |
|---------------------------------|----------------|--------|--------------------------------|--|--------------------------------|---|--------|--------------------------------------|-------------------------------------|----------------------------------|---|---|-----------------------------------|
|                                 | P              | P      | d <sub>1</sub> max             | b <sub>1</sub> min                           | d <sub>2</sub> max             | L max   | Lc max | h <sub>2</sub> max                   | t/T                                 | Pt                               | Q(ISO/DIN) min                                      | Q <sub>0</sub>                                      | q ≈                               |
|                                 | pollici        | mm     | mm                             | mm   | mm                             | mm  | mm     | mm                                   | mm                                  | mm                               | kN  | kN  | kg/m                              |
| *06B3                           | 3/8            | 9.525  | 6.35                           | 5.72   | 3.28                           | 33.50   | 37.30  | 8.26                                 | 1.34                                | 10.24                            | 24.90   | 29.80   | 1.16                              |
| 08B3                            | 1/2x5/16       | 12.70  | 8.51                           | 7.75   | 4.45                           | 44.90   | 47.20  | 11.81                                | 1.60                                | 13.92                            | 44.50/47.50   | 50.20   | 2.03                              |
| 10B3                            | 5/8            | 15.875 | 10.16                          | 9.65   | 5.08                           | 52.70   | 55.60  | 14.73                                | 1.70                                | 16.59                            | 66.70   | 79.80   | 2.77                              |
| 12B3                            | 3/4            | 19.05  | 12.07                          | 11.68  | 5.72                           | 61.50   | 65.20  | 16.13                                | 1.85                                | 19.46                            | 86.70   | 101.80  | 3.46                              |
| 16B3                            | 1"             | 25.40  | 15.88                          | 17.02  | 8.28                           | 99.80   | 105.30 | 21.08                                | 4.09/3.10                           | 31.88                            | 160.00  | 190.00  | 8.13                              |
| 20B3                            | 1"1/4          | 31.75  | 19.05                          | 19.58  | 10.19                          | 114.55  | 121.20 | 26.42                                | 4.60/3.60                           | 36.45                            | 250.00  | 276.20  | 10.82                             |
| 24B3                            | 1"1/2          | 38.10  | 25.40                          | 25.40  | 14.63                          | 150.20  | 153.82 | 33.40                                | 5.80/4.80                           | 48.36                            | 425.00  | 480.00  | 20.10                             |
| 28B3                            | 1"3/4          | 44.45  | 27.94                          | 30.99  | 15.90                          | 184.30  | 188.52 | 37.08                                | 7.50/6.50                           | 59.56                            | 530.00  | 580.00  | 24.92                             |
| 32B3                            | 2"             | 50.80  | 29.21                          | 30.99  | 17.81                          | 184.01  | 186.60 | 42.29                                | 7.00/6.00                           | 58.55                            | 670.00  | 720.20  | 31.56                             |
| 40B3                            | 2"1/2          | 63.50  | 39.37                          | 38.10  | 22.89                          | 226.80  | 236.10 | 52.96                                | 8.50/7.50                           | 72.29                            | 950.00  | 1020.00   | 48.10                             |
| 48B3                            | 3"             | 76.20  | 48.26                          | 45.72  | 29.24                          | 281.60  | 292.10 | 63.88                                | 11.70/10.00                         | 91.21                            | 1500.00   | 1590.00   | 75.00                             |
| 56B3                            | 3"1/2          | 88.90  | 53.98                          | 53.34  | 34.32                          | 327.8   | 336.20 | 77.80                                | 13.5/12.00                          | 106.6                            | 2240.00   | 2240.00   | 107.18                            |
| 64B3                            | 4"             | 101.60 | 63.50                          | 60.96  | 39.40                          | 369.8   | 378.30 | 90.17                                | 15.0/13.00                          | 119.89                           | 3000.00   | 3300.00   | 136.00                            |
| 72B3                            | 4"1/2          | 114.30 | 72.39                          | 68.58  | 44.48                          | 420.0   | 429.00 | 103.60                               | 17.0/15.00                          | 136.27                           | 3750.00   | 4125.00   | 180.00                            |

\*Con piastre a profilo dritto / \*Straight side plates

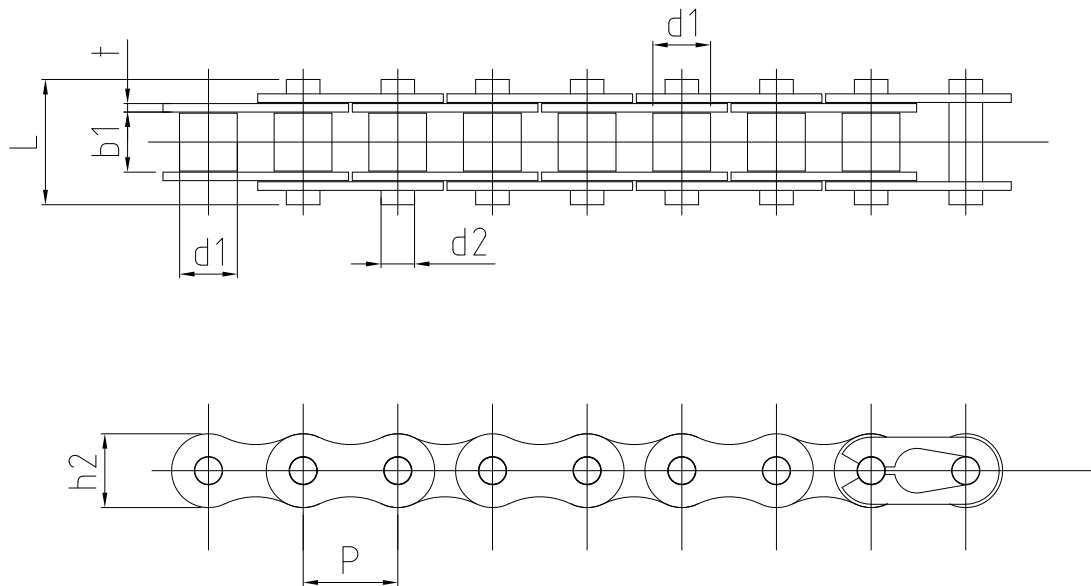
Catene per **biciclette e ciclomotori** / Chains for **bicycles and motorcycles**

**BICICLETTE E CICLOMOTORI / BICYCLES AND MOTORCYCLES**

| ISO     | Appellativo<br>Type | Passo  | Diam. rullo max  | Largh. Int. min      | Diam. Perno max | Altezza piastra max | Largh. catena ribad. max   | Ingombro catena max     | Superf. di lavoro | Carico di rottura medio | Peso al metro    |
|---------|---------------------|--------|------------------|----------------------|-----------------|---------------------|----------------------------|-------------------------|-------------------|-------------------------|------------------|
|         |                     | Pitch  | Max roller diam. | Width between plates | Max pin diam.   | Inner plate depth   | Width over connecting pins | Width over bearing pins | Working surface   | Medium breaking load    | Weight per meter |
|         |                     | P      | Dr               | R                    | Dp              | Y                   | Z                          | F                       | mm                | mm                      | kg/m             |
|         |                     | mm     | mm               | mm                   | mm              | mm                  | mm                         | mm                      | mm                | mm                      | mm               |
| 081-1   | 1/2x1/8             | 12,70  | 7,75             | 3,30                 | 3,68            | 9,91                | 9,31                       | 12,3                    | 20                | 9.410                   | 0,29             |
| 082-1   | 1/2x3/32            | 12,70  | 7,75             | 2,38                 | 3,66            | 9,91                | 8,1                        | 10,6                    | 16                | 9.410                   | 0,26             |
| 083-1   | 1/2x3/16            | 12,70  | 7,75             | 4,88                 | 4,09            | 10,30               | 12,9                       | 15,9                    | 33                | 11.365                  | 0,43             |
| 084-1   | 1/2x3/16 Rinf       | 12,70  | 7,75             | 4,88                 | 4,09            | 11,15               | 14,6                       | 17,6                    | 36                | 15.100                  | 0,51             |
| 085-1   | 1/2x1/4 (ASA 41)    | 12,70  | 7,75             | 6,25                 | 3,58            | 9,91                | 13,7                       | 17,7                    | 32                | 11.360                  | 0,47             |
| SPECIAL | SPECIAL             | 12,70  | 8,75             | 5,21                 | 4,45            | 11,81               | 14,5                       | 22                      | 40                | 17.900                  | 0,60             |
| SPECIAL | SPECIAL             | 15,875 | 10,16            | 6,48                 | 5,08            | 14,73               | 17,5                       | 26                      | 54                | 13.565                  | 0,80             |

Nota: Tutte le dimensioni indicate sono espresse in mm. / Note: All dimensions are expressed in mm.



| Catena<br>GB/ISO<br><br>GB/ISO<br>Chain | Passo  | Diam.<br>Rullo     | Larghezza<br>interna             | Diametro<br>Perno | Largh.<br>catena<br>ribadita |           | Altezza<br>piastra   | Spessore<br>Maglia | Tensione<br>Massima             | Tensione<br>Media              | Peso al<br>metro    |
|---|--------|--------------------|----------------------------------|-------------------|------------------------------|-----------|----------------------|--------------------|---------------------------------|--------------------------------|---------------------|
|   | Pitch  | Roller<br>diameter | Width<br>between<br>inner plates | Pin<br>diameter   | L                            | Lc<br>max | Inner plate<br>depth | Plate<br>thickness | Ultimate<br>Tensile<br>Strength | Average<br>tensile<br>strength | Weight<br>per meter |
|   | P      | $d_1$<br>max       | $b_1$<br>min                     | $d_2$<br>max      | mm                           | mm        | $h_2$<br>max         | t/T                | $Q_{min}$                       | $Q_0$                          | $q_{\approx}$       |
|   | mm     | mm                 | mm                               | mm                | mm                           | mm        | mm                   | mm                 | kN                              | kN                             | kg/m                |
| 428HSO                                  | 12.70  | 8.51               | 7.94                             | 4.36              | 20.50                        | 23.00     | 12.50                | 2.00/1.80          | 18.62                           | 21.00                          | 1.07                |
| 520SO                                   | 15.875 | 10.16              | 6.35                             | 5.08              | 20.50                        | 21.60     | 15.09                | 2.06               | 22.20                           | 26.50                          | 0.96                |
| 530SO                                   | 15.875 | 10.16              | 9.53                             | 5.08              | 23.50                        | 24.90     | 15.09                | 2.06               | 22.20                           | 26.46                          | 1.12                |

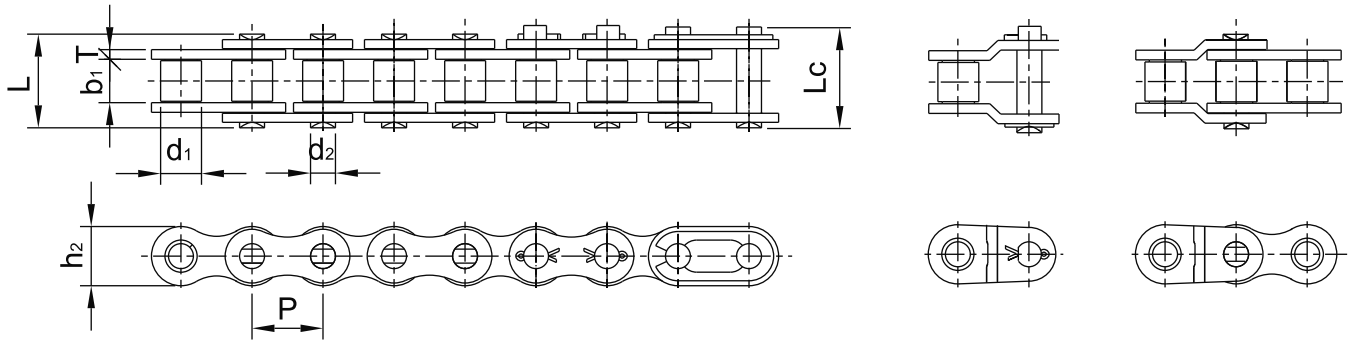
Catene speciali / *Special chains*


| Catena<br>GB/ISO<br><br>GB/ISO<br>Chain | Catena<br>JCAS<br><br>JCAS<br>Chain | Passo  | Diam.<br>Rullo        | Diametro<br>Perno     | Larghezza<br>interna                | Largh.<br>catena<br>ribadita |           | Altezza<br>piastra      | Spessore<br>Maglia | Tensione<br>Massima             | Tensione<br>Media              | Peso al<br>metro       |
|---|-------------------------------------|--------|-----------------------|-----------------------|-------------------------------------|------------------------------|-----------|-------------------------|--------------------|---------------------------------|--------------------------------|------------------------|
|   |                                     | Pitch  | Roller<br>diameter    | Pin<br>diameter       | Width<br>between<br>inner<br>plates | L                            | Lc        | Inner<br>plate<br>depth | Plate<br>thickness | Ultimate<br>Tensile<br>Strength | Average<br>tensile<br>strength | Weight<br>per<br>meter |
|   |                                     | P      | d <sub>1</sub><br>max | d <sub>2</sub><br>max | b <sub>1</sub><br>min               | L<br>max                     | Lc<br>max | h <sub>2</sub><br>max   | t/T                | Q<br>min                        | Q <sub>0</sub>                 | q<br>≈                 |
|   |                                     | mm     | mm                    | mm                    | mm                                  | mm                           | mm        | mm                      | mm                 | kN                              | kN                             | kg/m                   |
| *04MA                                   | 25H                                 | 6.35   | 3.30                  | 2.31                  | 3.10                                | 9.10                         | 10.60     | 6.00                    | 1.00               | 4.80                            | 5.50                           | 0.17                   |
| *05MA                                   | 219                                 | 7.774  | 4.59                  | 3.01                  | 4.68                                | 12.00                        | 13.60     | 7.50                    | 1.20/1.00          | 6.60                            | 7.40                           | 0.27                   |
| *05MC                                   | 270                                 | 8.50   | 5.00                  | 3.28                  | 4.75                                | 13.30                        | -         | 8.60                    | 1.80/1.40          | 9.80                            | 10.80                          | 0.33                   |
| 06MA(T.F)                               |                                     | 9.525  | 6.00                  | 4.50                  | 9.50                                | 18.60                        | -         | 9.30                    | 1.85/1.48          | 11.80                           | 14.10                          | 0.61                   |
| 08MA                                    | 420                                 | 12.70  | 7.77                  | 3.96                  | 6.25                                | 16.00                        | 17.60     | 12.00                   | 1.50               | 16.00                           | 18.50                          | 0.55                   |
| 08MB                                    | 428                                 | 12.70  | 8.51                  | 4.45                  | 7.75                                | 17.00                        | 19.50     | 11.80                   | 1.50               | 17.80                           | 21.00                          | 0.66                   |
| 08MC                                    | 428H                                | 12.70  | 8.51                  | 4.45                  | 7.75                                | 19.30                        | 21.80     | 11.80                   | 2.00               | 20.60                           | 23.50                          | 0.79                   |
| 10MA                                    | 520                                 | 15.875 | 10.16                 | 5.08                  | 6.25                                | 19.00                        | 21.50     | 15.09                   | 2.40               | 26.50                           | 31.80                          | 1.00                   |
| 10MB                                    | 630                                 | 15.875 | 10.16                 | 5.08                  | 9.40                                | 22.00                        | 24.50     | 15.09                   | 2.00               | 26.50                           | 30.00                          | 1.06                   |

Nota: Per le catene con boccole: d1 indica il diametro esterno della boccola  
 Note: For Bush Chain: d1 indicates the external diameter of the bushing



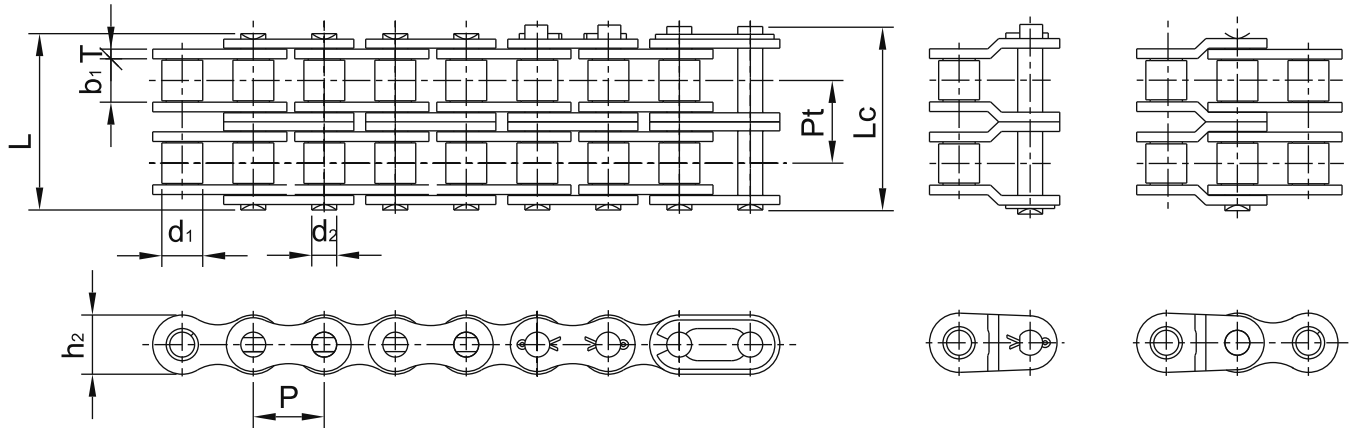
Catene a rulli semplici ASA / *Single Strand Roller Chains ANSI*



SERIE AMERICANA ASA / AMERICAN SERIES ANSI

| Catena<br>ASA<br><br>ANSI<br>Chain | Passo<br><br>Pitch |        | Diam.<br>Rullo<br><br>Roller<br>diameter | Larghezza<br>interna<br><br>Width<br>between<br>inner plates | Diametro<br>Perno<br><br>Pin<br>diameter | Largh. catena<br>ribadita<br><br>Riveted chain<br>width |           | Altezza<br>piastra<br><br>Inner<br>plate<br>depth | Passo<br>trasv.<br><br>Transverse<br>pitch | Spessore<br>piastra<br><br>Plate<br>thickness | Carico di<br>rottura<br>min.<br><br>Ultimate<br>tensile<br>strength | Carico di<br>rottura<br>medio<br><br>Average<br>tensile<br>strength | Peso al<br>metro<br><br>Weight<br>per<br>meter |
|------------------------------------|--------------------|--------|--|--|--|---|-----------|---|--|---|---|---|--|
|                                    | P                  | P      | d <sub>1</sub><br>max                    | b <sub>1</sub><br>min  | d <sub>2</sub><br>max                    | L<br>max  | Lc<br>max | h <sub>2</sub><br>max                             | Pt   | T   | Q(ISO/DIN)<br>min   | Q <sub>o</sub>  | q<br>≈   |
|                                    | pollici            | mm     | mm                                       | mm   | mm                                       | mm  | mm        | mm  | mm   | mm  | mm  | kN  | kN   |
| *25A1                              | *P6                | 6.35   | 3.30                                     | 3.10   | 2.31                                     | 8.00  | 9.90      | 6.02  | -  | 0.80  | 3.50  | 4.40  | 0.14   |
| *35A1                              | *3/8               | 9.525  | 5.08                                     | 4.68   | 3.58                                     | 12.40   | 14.40     | 8.70  | -  | 1.30  | 7.90  | 10.40   | 0.33   |
| 41A1                               | 1/21/4             | 12.70  | 7.77                                     | 6.25   | 3.58                                     | 13.75   | 16.00     | 9.91  | -  | 1.25  | 6.70/6.80   | 11.80   | 0.41   |
| 40A1                               | 1/2                | 12.70  | 7.95                                     | 7.85   | 3.96                                     | 16.60   | 19.10     | 12.07   | -  | 1.50  | 13.80/14.10   | 17.80   | 0.62   |
| 50A1                               | 5/8                | 15.875 | 10.16                                    | 9.40   | 5.08                                     | 20.70   | 23.30     | 15.09   | -  | 2.06  | 21.80/22.20   | 28.00   | 1.02   |
| 60A1                               | 3/4                | 19.05  | 11.91                                    | 12.57  | 5.94                                     | 25.90   | 28.60     | 18.08   | -  | 2.44  | 31.10/<br>31.80   | 39.00   | 1.50   |
| 80A1                               | 1"                 | 25.40  | 15.88                                    | 15.75  | 7.92                                     | 32.70   | 38.00     | 24.13   | -  | 3.26  | 55.60/<br>56.70   | 71.50   | 2.60   |
| 100A1                              | 1"1/4              | 31.75  | 19.05                                    | 18.90  | 9.53                                     | 41.10   | 44.90     | 30.18   | -  | 4.00  | 86.70/<br>88.50   | 102.00  | 3.91   |
| 120A1                              | 1"1/2              | 38.10  | 22.23                                    | 25.22  | 11.10                                    | 50.80   | 56.10     | 36.20   | -  | 4.80  | 124.60/<br>127.00   | 156.90  | 5.62   |
| 140A1                              | 1"3/4              | 44.45  | 25.40                                    | 25.22  | 12.70                                    | 54.90   | 60.80     | 42.24   | -  | 5.65  | 169.00/<br>172.40   | 210.80  | 7.50   |
| 160A1                              | 2"                 | 50.80  | 28.58                                    | 31.55  | 14.27                                    | 65.50   | 72.60     | 48.26   | -  | 6.45  | 222.40/<br>226.80   | 269.70  | 10.10  |
| 180A1                              | 2"1/4              | 57.15  | 35.71                                    | 35.48  | 17.46                                    | 72.80   | 83.00     | 54.31   | -  | 7.25  | 280.20  | 327.80  | 13.45  |
| 200A1                              | 2"1/2              | 63.50  | 39.68                                    | 37.85  | 19.85                                    | 80.30   | 90.50     | 60.33   | -  | 8.00  | 347.00/<br>353.80   | 410.00  | 16.15  |
| 240A1                              | 3"                 | 76.20  | 47.63                                    | 47.35  | 23.81                                    | 95.50   | 106.00    | 72.39   | -  | 9.50  | 500.40/<br>510.30   | 585.40  | 23.20  |

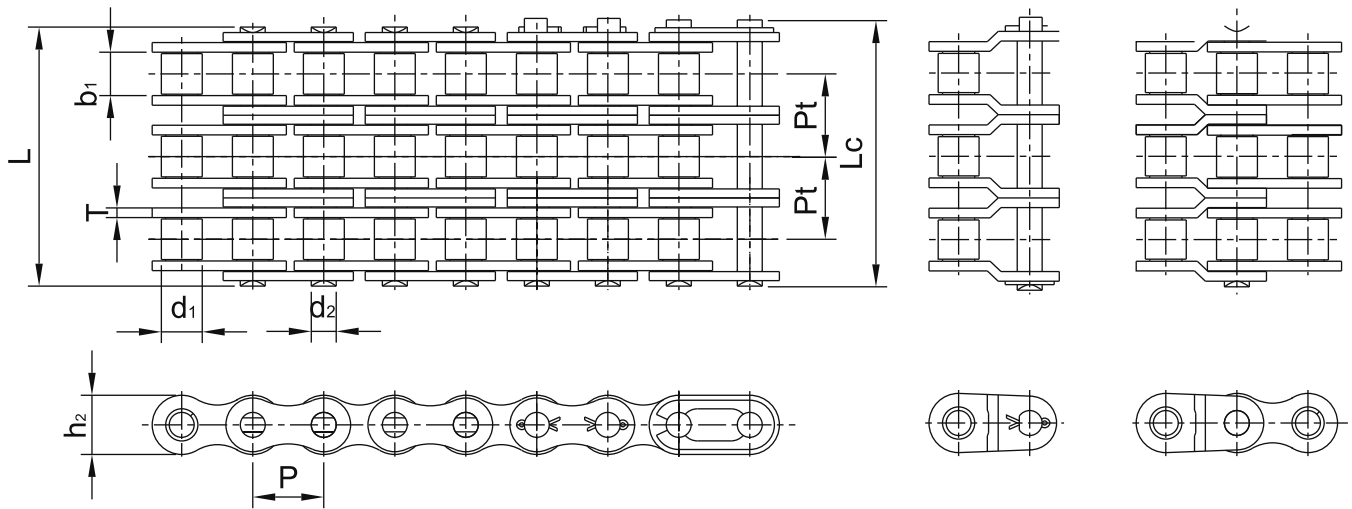
\*Catena a Bussola: d<sub>1</sub> indica il diametro esterno della bussola. / \*Bush chain: d<sub>1</sub> indicates the external diameter of the bushing.

**Catene a rulli doppie ASA / Double Strand Roller Chains ANSI**

**SERIE AMERICANA ASA / AMERICAN SERIES ANSI**

| Catena<br>ASA<br><br>ANSI<br>Chain | Passo<br>Pitch |        | Diam.<br>Rullo<br>Roller<br>diameter | Larghezza<br>interna<br>Width<br>between<br>inner plates | Diametro<br>Perno<br>Pin<br>diameter | Largh. catena<br>ribadita<br>Riveted chain<br>width |           | Altezza<br>piastra<br>Inner<br>plate<br>depth | Passo<br>trasv.<br>Transverse<br>pitch | Spessore<br>piastra<br>Plate<br>thickness | Carico di<br>rottura<br>min.<br>Ultimate<br>tensile<br>strength | Carico di<br>rottura<br>medio<br>Average<br>tensile<br>strength | Peso al<br>metro<br>Weight<br>per<br>meter |
|------------------------------------|----------------|--------|--------------------------------------|--|--------------------------------------|---|-----------|---|--|---|---|---|--|
|                                    | P              | P      | d <sub>1</sub><br>max                | b <sub>1</sub><br>min                                    | d <sub>2</sub><br>max                | L<br>max  | Lc<br>max | h <sub>2</sub><br>max                         | Pt                                     | T   | Q(ISO/DIN)<br>min   | Q <sub>0</sub>  | q<br>≈                                     |
|                                    | pollici        | mm     | mm                                   | mm   | mm                                   | mm  | mm        | mm  | mm                                     | mm  | kN  | kN  | kg/m                                       |
| *25A2                              | P6             | 6.35   | 3.30                                 | 3.10   | 2.31                                 | 14.50   | 16.50     | 6.02  | 6.40                                   | 0.80                                      | 7.00  | 8.80  | 0.28                                       |
| *35A2                              | 3/8            | 9.525  | 5.08                                 | 4.68   | 3.58                                 | 22.50   | 24.50     | 8.70  | 10.13                                  | 1.30                                      | 15.80   | 20.80   | 0.63                                       |
| 40A2                               | 1/2            | 12.70  | 7.95                                 | 7.85   | 3.96                                 | 31.00   | 33.50     | 12.07   | 14.38                                  | 1.50                                      | 27.60/28.20   | 35.60   | 1.12                                       |
| 50A2                               | 5/8            | 15.875 | 10.16                                | 9.40   | 5.08                                 | 38.90   | 41.30     | 15.09   | 18.11                                  | 2.06                                      | 43.60/44.40   | 56.00   | 2.00                                       |
| 60A2                               | 3/4            | 19.05  | 11.91                                | 12.57  | 5.94                                 | 48.80   | 51.50     | 18.08   | 22.78                                  | 2.44                                      | 62.30/63.60   | 82.40   | 2.92                                       |
| 80A2                               | 1"             | 25.40  | 15.88                                | 15.75  | 7.92                                 | 62.70   | 67.10     | 24.13   | 29.29                                  | 3.26                                      | 111.20/<br>113.40   | 143.00  | 5.15                                       |
| 100A2                              | 1"1/4          | 31.75  | 19.05                                | 18.90  | 9.53                                 | 76.40   | 83.10     | 30.18   | 35.76                                  | 4.00                                      | 173.50/<br>177.00   | 204.00  | 7.80                                       |
| 120A2                              | 1"1/2          | 38.10  | 22.23                                | 25.22  | 11.10                                | 96.30   | 101.60    | 36.20   | 45.44                                  | 4.80                                      | 249.10/<br>254.00   | 313.80  | 11.70                                      |
| 140A2                              | 1"3/4          | 44.45  | 25.40                                | 25.22  | 12.70                                | 103.60  | 109.40    | 42.24   | 48.87                                  | 5.65                                      | 338.10/<br>344.80   | 421.70  | 15.14                                      |
| 160A2                              | 2"             | 50.80  | 28.58                                | 31.55  | 14.27                                | 123.30  | 130.20    | 48.26   | 58.55                                  | 6.45                                      | 444.80/<br>453.60   | 539.40  | 20.14                                      |
| 180A2                              | 2"1/4          | 57.15  | 35.71                                | 35.48  | 17.46                                | 138.60  | 148.50    | 54.31   | 65.84                                  | 7.25                                      | 560.50  | 655.70  | 29.22                                      |
| 200A2                              | 2"1/2          | 63.50  | 39.68                                | 37.85  | 19.85                                | 151.90  | 161.50    | 60.33   | 71.55                                  | 8.00                                      | 693.90/<br>707.60   | 820.00  | 32.24                                      |
| 240A2                              | 3"             | 76.20  | 47.63                                | 47.35  | 23.81                                | 183.40  | 193.90    | 72.39   | 87.83                                  | 9.50                                      | 1000.80/<br>1020.60   | 1170.80   | 45.23                                      |

\*Catena a Bussola: d<sub>1</sub> indica il diametro esterno della bussola. / \*Bush chain: d<sub>1</sub> indicates the external diameter of the bushing.

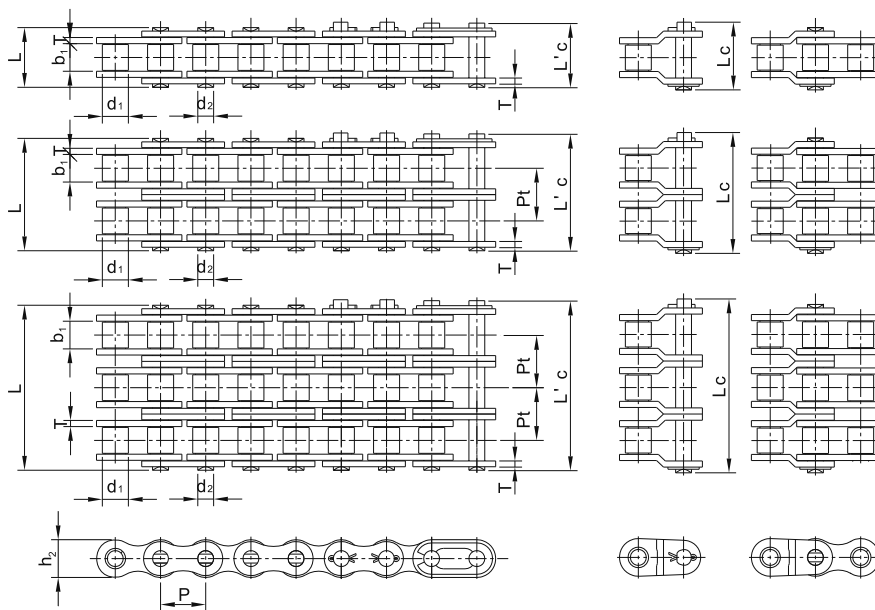
Catene a rulli triple ASA / Triple Strand Roller Chains ANSI



SERIE AMERICANA ASA / AMERICAN SERIES ANSI

| Catena<br>ASA<br>ANSI<br>Chain | Passo<br>Pitch |        | Diam.<br>Rullo<br>Roller<br>diameter | Larghezza<br>interna<br>Width<br>between<br>inner plates | Diametro<br>Perno<br>Pin<br>diameter | Largh. catena<br>ribadita<br>Riveted chain<br>width |           | Altezza<br>piastra<br>Inner plate<br>depth | Passo<br>trasv.<br>Transverse<br>pitch | Spessore<br>piastra<br>Plate<br>thickness | Carico di<br>rottura<br>min.<br>Ultimate<br>tensile<br>strength | Carico di<br>rottura<br>medio<br>Average<br>tensile<br>strength | Peso al<br>metro<br>Weight<br>per<br>meter |
|--------------------------------|----------------|--------|--------------------------------------|--|--------------------------------------|---|-----------|--|--|---|---|---|--|
|                                | P              | P      | d <sub>1</sub><br>max                | b <sub>1</sub><br>min                                    | d <sub>2</sub><br>max                | L<br>max  | Lc<br>max | h <sub>2</sub><br>max                      | Pt                                     | T   | Q(ISO/DIN)<br>min   | Q <sub>0</sub>  | q<br>≈                                     |
|                                | pollici        | mm     | mm                                   | mm   | mm                                   | mm  | mm        | mm   | mm                                     | mm  | kN  | kN  | kg/m                                       |
| *35A3                          | 3/8            | 9.525  | 5.08                                 | 4.68   | 3.58                                 | 32.70   | 34.70     | 8.70                                       | 10.13                                  | 1.30                                      | 23.70   | 30.00   | 1.05                                       |
| 40A3                           | 1/2            | 12.70  | 7.95                                 | 7.85   | 3.96                                 | 45.40   | 48.00     | 12.07                                      | 14.38                                  | 1.50                                      | 41.40/42.30   | 51.20   | 1.90                                       |
| 50A3                           | 5/8            | 15.875 | 10.16                                | 9.40   | 5.08                                 | 57.00   | 59.80     | 15.09                                      | 18.11                                  | 2.06                                      | 65.40/66.60   | 82.00   | 3.09                                       |
| 60A3                           | 3/4            | 19.05  | 11.91                                | 12.57  | 5.94                                 | 71.50   | 75.60     | 18.08                                      | 22.78                                  | 2.44                                      | 93.40/<br>95.40   | 115.00  | 4.54                                       |
| 80A3                           | 1"             | 25.40  | 15.88                                | 15.75  | 7.92                                 | 91.70   | 96.80     | 24.13                                      | 29.29                                  | 3.26                                      | 116.80/<br>170.10   | 208.00  | 7.89                                       |
| 100A3                          | 1"1/4          | 31.75  | 19.05                                | 18.90  | 9.53                                 | 112.20  | 117.20    | 30.18                                      | 35.76                                  | 4.00                                      | 260.20/<br>265.50   | 310.00  | 11.77                                      |
| 120A3                          | 1"1/2          | 38.10  | 22.23                                | 25.22  | 11.10                                | 141.70  | 148.30    | 36.20                                      | 45.44                                  | 4.80                                      | 373.70/<br>381.00   | 470.70  | 17.53                                      |
| 140A3                          | 1"3/4          | 44.45  | 25.40                                | 25.22  | 12.70                                | 152.20  | 158.30    | 42.24                                      | 48.87                                  | 5.65                                      | 507.10/<br>517.20   | 632.50  | 22.20                                      |
| 160A3                          | 2"             | 50.80  | 28.58                                | 31.55  | 14.27                                | 181.80  | 188.60    | 48.26                                      | 58.55                                  | 6.45                                      | 667.20/<br>680.40   | 809.00  | 30.02                                      |
| 180A3                          | 2"1/4          | 57.15  | 35.71                                | 35.48  | 17.46                                | 204.40  | 214.50    | 54.31                                      | 65.84                                  | 7.25                                      | 840.70  | 983.60  | 38.22                                      |
| 200A3                          | 2"1/2          | 63.50  | 39.68                                | 37.85  | 19.85                                | 223.50  | 232.90    | 60.33                                      | 71.55                                  | 8.00                                      | 1040.90/<br>1061.40   | 1230.00   | 49.03                                      |
| 240A3                          | 3"             | 76.20  | 47.63                                | 47.35  | 23.81                                | 271.30  | 281.80    | 72.39                                      | 87.83                                  | 9.50                                      | 1501.30/<br>1530.90   | 1756.20   | 71.60                                      |

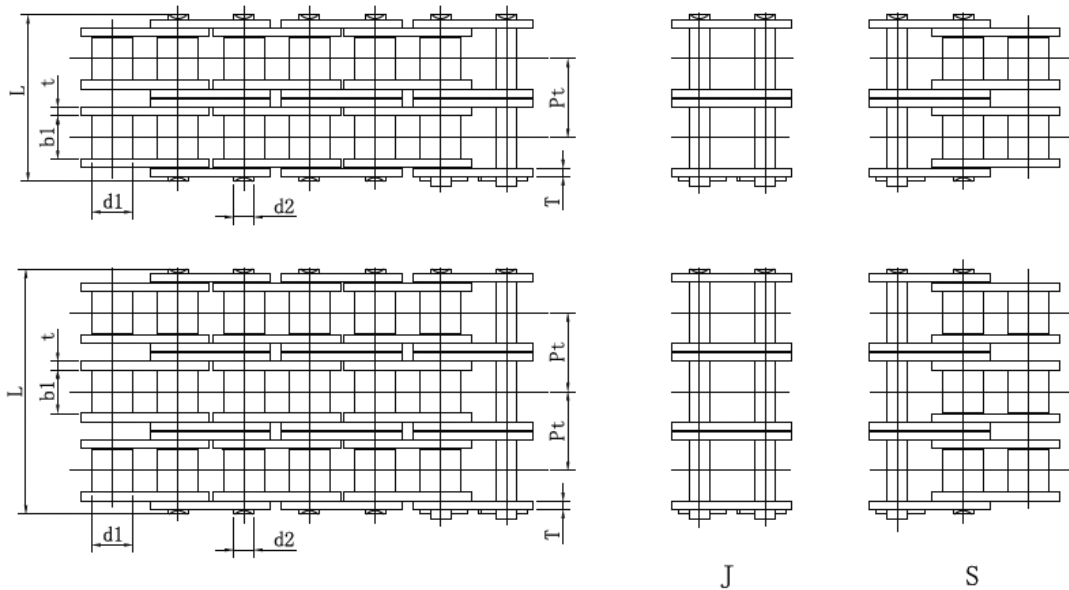
\*Catena a Bussola: d<sub>i</sub> indica il diametro esterno della bussola. / \*Bush chain: d<sub>i</sub> indicates the external diameter of the bushing.

**Catene a rulli ASA H serie rinforzata / ANSI H Heavy Series Roller Chains**

**SERIE AMERICANA ASA H RINFORZATA / HEAVY AMERICAN SERIES ANSI H**

| Catena<br>ASA H<br><br>ANSI H<br>Chain | Passo<br>Pitch |        | Diam.<br>Rullo<br>Roller<br>diameter | Larghezza<br>interna<br>Width<br>between<br>inner plates | Diametro<br>Perno<br>Pin<br>diameter | Largh. catena<br>ribadita<br>Riveted chain<br>width |           | Altezza<br>piastra<br>Inner plate<br>depth | Passo<br>trasv.<br>Transverse<br>pitch | Spessore<br>piastra<br>Plate<br>thickness | Carico di<br>rottura min.<br>Ultimate<br>tensile<br>strength | Carico di<br>rottura<br>medio<br>Average<br>tensile<br>strength | Peso al<br>metro<br>Weight<br>per<br>meter |
|--|----------------|--------|--------------------------------------|--|--------------------------------------|---|-----------|--|--|---|--|---|--|
|  | P              | P      | d <sub>1</sub><br>max                | b <sub>1</sub><br>min                                    | d <sub>2</sub><br>max                | L<br>max  | Lc<br>max | h <sub>2</sub><br>max                      | Pt                                     | T   | Q(ISO/DIN)<br>min  | Q <sub>0</sub>  | q<br>≈                                     |
|  | pollici        | mm     | mm                                   | mm   | mm                                   | mm  | mm        | mm   | mm                                     | mm  | mm   | kN  | kN   |
| 40A1H                                  | 1/2            | 12.70  | 7.95                                 | 7.85   | 3.96                                 | 18.20   | 19.70     | 12.00                                      | -                                      | 2.06                                      | 13.80/14.10  | 20.40   | 0.82                                       |
| 50A1H                                  | 5/8            | 15.875 | 10.16                                | 9.40   | 5.08                                 | 22.10   | 24.90     | 15.09                                      | -                                      | 2.44                                      | 21.80/22.20  | 29.80   | 1.25                                       |
| 60A1H                                  | 3/4            | 19.05  | 11.91                                | 12.57  | 5.94                                 | 29.90   | 34.50     | 18.08                                      | -                                      | 3.26                                      | 31.10/31.80  | 41.00   | 1.87                                       |
| 80A1H                                  | 1"             | 25.40  | 15.88                                | 15.75  | 7.92                                 | 36.60   | 42.00     | 24.13                                      | -                                      | 4.00                                      | 55.60/56.70  | 72.10   | 3.10                                       |
| 100A1H                                 | 1 1/4          | 31.75  | 19.05                                | 18.90  | 9.53                                 | 44.10   | 50.20     | 30.18                                      | -                                      | 4.80                                      | 86.70/88.50  | 106.20  | 4.38                                       |
| 120A1H                                 | 1 1/2          | 38.10  | 22.23                                | 25.22  | 11.10                                | 53.80   | 60.40     | 36.20                                      | -                                      | 5.65                                      | 124.60/127.00  | 156.70  | 6.60                                       |
| 140A1H                                 | 1 3/4          | 14,35  | 25,40                                | 25,40  | 12,70                                | 58  | -         | 42,24                                      | -                                      | -   | -  | 197,80  | 8,20                                       |
| 160A1H                                 | 2"             | 50,80  | 31,75                                | 31,75  | 44,27                                | 68,00   | -         | 48,26                                      | -                                      | -   | -  | 249,20  | 10,41                                      |
| 60A2H                                  | 3/4            | 19.05  | 11.91                                | 12.57  | 5.94                                 | 56.00   | 60.60     | 18.08                                      | 26.11                                  | 3.26                                      | 62.30/63.60  | 85.00   | 3.71                                       |
| 80A2H                                  | 1"             | 25.40  | 15.88                                | 15.75  | 7.92                                 | 69.20   | 74.60     | 24.13                                      | 32.59                                  | 4.00                                      | 111.20/113.40  | 144.20  | 6.15                                       |
| 100A2H                                 | 1 1/4          | 31.75  | 19.05                                | 18.90  | 9.53                                 | 83.20   | 89.10     | 30.18                                      | 39.09                                  | 4.80                                      | 173.50/177.00  | 212.40  | 8.67                                       |
| 120A2H                                 | 1 1/2          | 38.10  | 22.23                                | 25.22  | 11.10                                | 102.7   | 109.3     | 36.20                                      | 48.87                                  | 5.65                                      | 249.10/254.00  | 310.50  | 13.13                                      |
| 60A3H                                  | 3/4            | 19.05  | 11.91                                | 12.57  | 5.94                                 | 82.10   | 86.70     | 18.08                                      | 26.11                                  | 3.26                                      | 93.40/95.40  | 120.00  | 5.54                                       |
| 80A3H                                  | 1"             | 25.40  | 15.88                                | 15.75  | 7.92                                 | 101.8   | 107.2     | 24.13                                      | 32.59                                  | 4.00                                      | 166.80/170.10  | 210.20  | 9.42                                       |
| 100A3H                                 | 1 1/4          | 31.75  | 19.05                                | 18.90  | 9.53                                 | 122.3   | 128.4     | 30.18                                      | 39.09                                  | 4.80                                      | 260.20/265.50  | 316.80  | 12.96                                      |
| 120A3H                                 | 1 1/2          | 38.10  | 22.23                                | 25.22  | 11.10                                | 151.5   | 158.1     | 36.20                                      | 48.87                                  | 5.65                                      | 373.70/381.00  | 458.20  | 19.64                                      |

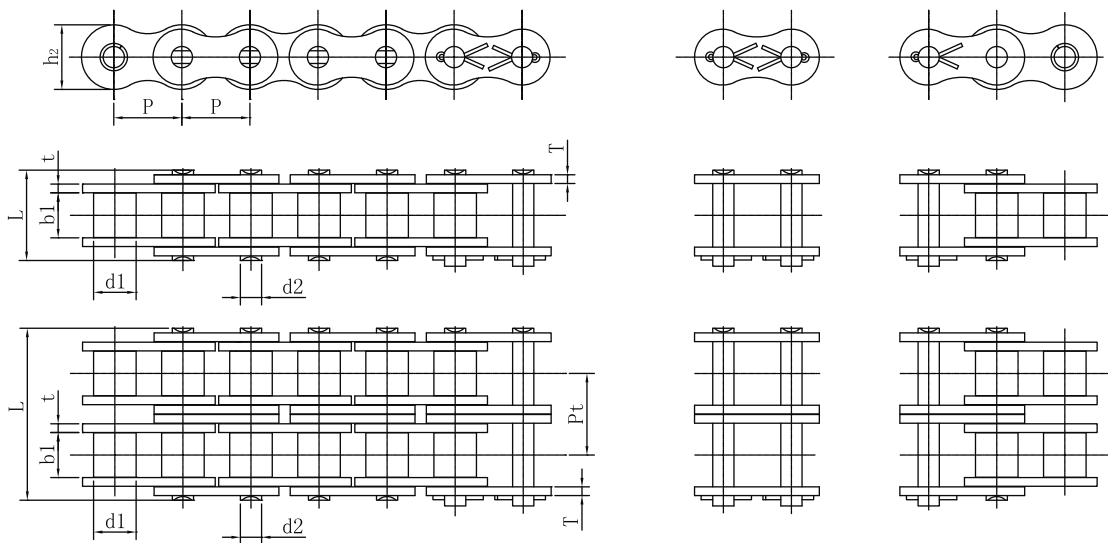
Nota: L'c &lt; Lc. / Note: L'c &lt; Lc.

Catene super rinforzate / **Super Strength Chains**



SERIE AMERICANA ASA / AMERICAN SERIES ANSI

| Catena ASA<br>ANSI Chain | Passo  | Diam. Rullo        | Larghezza interna          | Diametro Perno     | Largh. catena ribadita | Altezza piastra    | Spessore piastra | Passo trasv.     | Carico di rottura min.    | Carico di rottura medio  | Peso al metro    |
|--------------------------|--------|--------------------|----------------------------|--------------------|------------------------|--------------------|------------------|------------------|---------------------------|--------------------------|------------------|
|                          | Pitch  | Roller diameter    | Width between inner plates | Pin diameter       | Riveted chain width    | Inner plate depth  | Plate thickness  | Transverse pitch | Ultimate tensile strength | Average tensile strength | Weight per meter |
|                          | P      | d <sub>1</sub> max | b <sub>1</sub> min         | d <sub>2</sub> max | L max                  | h <sub>2</sub> max | t/T              | Pt               | Q(ISO/DIN) min            | Q <sub>0</sub>           | q ≈              |
|                          | mm     | mm                 | mm                         | mm                 | mm                     | mm                 | mm               | mm               | kN                        | kN                       | kg/m             |
| T40-1                    | 12.70  | 7.95               | 7.85                       | 3.96               | 17.80                  | 12.07              | 1.50             | -                | 15.70                     | 20.41                    | 0.62             |
| T50-1                    | 15.875 | 10.16              | 9.40                       | 5.08               | 21.82                  | 15.09              | 2.06             | -                | 26.50                     | 30.50                    | 1.02             |
| T60-1                    | 19.05  | 11.91              | 12.57                      | 5.94               | 26.90                  | 18.08              | 2.44             | -                | 40.15                     | 46.20                    | 1.50             |
| T80-1                    | 25.40  | 15.88              | 15.88                      | 7.94               | 33.50                  | 24.13              | 3.26             | -                | 72.50                     | 80.20                    | 2.60             |
| T80-2                    | 25.40  | 15.88              | 15.88                      | 7.94               | 62.70                  | 24.13              | 3.26             | 29.29            | 143.00                    | 162.20                   | 5.15             |
| T100-1                   | 31.75  | 19.05              | 19.05                      | 9.54               | 41.10                  | 30.18              | 4.00             | -                | 107.80                    | 127.40                   | 3.91             |
| T100-2                   | 31.75  | 19.05              | 19.05                      | 9.54               | 77.00                  | 30.18              | 4.00             | 35.76            | 215.60                    | 254.80                   | 7.80             |
| T120-1                   | 38.10  | 22.23              | 25.40                      | 11.11              | 50.80                  | 36.20              | 4.80             | -                | 166.4                     | 181.20                   | 5.62             |
| T120-2                   | 38.10  | 22.23              | 25.40                      | 11.11              | 96.30                  | 36.20              | 4.80             | 45-44            | 332.80                    | 362.40                   | 11.7             |
| T140-1                   | 44.45  | 25.40              | 25.40                      | 12.71              | 54.90                  | 42.24              | 5.60             | -                | 226.20                    | 240.00                   | 7.5              |
| T140-2                   | 44.45  | 25.40              | 25.40                      | 12.71              | 103.60                 | 42.24              | 5.60             | 48.87            | 458.40                    | 475.00                   | 15.14            |
| T160-1                   | 50.80  | 28.58              | 31.55                      | 14.27              | 65.50                  | 48.26              | 6.40             | -                | 277.23                    | 318.7                    | 10.10            |
| T160-2                   | 50.80  | 28.58              | 31.55                      | 14.27              | 124.20                 | 48.26              | 6.40             | 58.55            | 554.46                    | 632.40                   | 20.14            |
| T160-3                   | 50.80  | 28.58              | 31.55                      | 14.27              | 182.90                 | 48.26              | 6.40             | 58.55            | 776.35                    | 892.36                   | 30.05            |

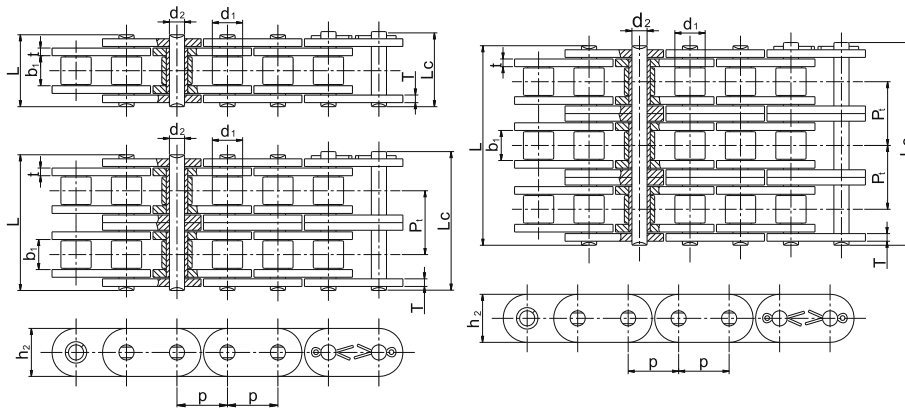
**Catene super rinforzate / Super Strength Chains**

**SERIE AMERICANA ASA / AMERICAN SERIES ANSI**

| Catena<br>ASA<br><br>ANSI<br>Chain | Passo | Diam.<br>Rullo     | Larghezza<br>interna                | Diametro<br>Perno | Largh.<br>catena<br>ribadita | Altezza<br>piastra      | Spessore<br>piastra | Passo<br>trasv.     | Carico di<br>rottura<br>min.    | Carico di<br>rottura<br>medio  | Peso al<br>metro       |
|------------------------------------|-------|--------------------|-------------------------------------|-------------------|------------------------------|-------------------------|---------------------|---------------------|---------------------------------|--------------------------------|------------------------|
|                                    | Pitch | Roller<br>diameter | Width<br>between<br>inner<br>plates | Pin<br>diameter   | Riveted<br>chain<br>width    | Inner<br>plate<br>depth | Plate<br>thickness  | Transverse<br>pitch | Ultimate<br>tensile<br>strength | Average<br>tensile<br>strength | Weight<br>per<br>meter |
|                                    | P     | $d_1$<br>max       | $b_1$<br>min                        | $d_2$<br>max      | L<br>max                     | $h_2$<br>max            | t/T                 | Pt                  | Q(ISO/<br>DIN)<br>min           | $Q_0$                          | $q$<br>$\approx$       |
|                                    | mm    | mm                 | mm                                  | mm                | mm                           | mm                      | mm                  | mm                  | kN                              | kN                             | kg/m                   |
| HT60-1                             | 19.05 | 11.91              | 12.70                               | 5.94              | 29.90                        | 18.08                   | 3.26                | -                   | 42.97                           | 55.86                          | 1.87                   |
| HT60-2                             | 19.05 | 11.91              | 12.70                               | 5.94              | 56.00                        | 18.08                   | 3.26                | 26.11               | 85.94                           | 111.72                         | 3.71                   |
| HT80-1                             | 25.40 | 15.88              | 15.88                               | 7.94              | 37.40                        | 24.13                   | 4.00                | -                   | 93.10                           | 94.75                          | 3.1                    |
| HT80-2                             | 25.40 | 15.88              | 15.88                               | 7.94              | 69.20                        | 24.13                   | 4.00                | 32.59               | 185.00                          | 195.50                         | 6.15                   |
| HT100-1                            | 31.75 | 19.05              | 19.05                               | 9.54              | 44.10                        | 3.18                    | 4.80                | -                   | 142.10                          | 149.20                         | 4.38                   |
| HT100-2                            | 31.75 | 19.05              | 19.05                               | 9.54              | 83.20                        | 30.18                   | 4.80                | 39.09               | 248.20                          | 289.40                         | 8.67                   |
| HT120-1                            | 38.10 | 22.23              | 25.40                               | 11.11             | 53.80                        | 36.20                   | 5.60                | -                   | 181.90                          | 185.40                         | 6.70                   |
| HT120-2                            | 38.10 | 22.23              | 25.40                               | 11.11             | 102.70                       | 36.20                   | 5.60                | 48.87               | 363.80                          | 372.50                         | 13.32                  |
| HT140-1                            | 44.45 | 25.40              | 25.40                               | 12.71             | 58.00                        | 42.24                   | 6.40                | -                   | 232.30                          | 245.90                         | 8.53                   |
| HT140-2                            | 44.45 | 25.40              | 25.40                               | 12.71             | 110.20                       | 42.24                   | 6.40                | 52.20               | 464.60                          | 482.40                         | 17.0                   |
| HT160-1                            | 50.80 | 28.58              | 31.55                               | 14.27             | 68.80                        | 48.26                   | 7.25                | -                   | 273.00                          | 314.00                         | 11.10                  |
| HT160-2                            | 50.80 | 28.58              | 31.55                               | 14.27             | 130.5                        | 48.26                   | 7.25                | 61.90               | 545.00                          | 628.00                         | 22.1                   |
| #T80G-1                            | 25.40 | 15.88              | 15.75                               | 8.71              | 38.10                        | 24.70                   | 4.0/4.8             | -                   | 108.00                          | 122.40                         | 4.2                    |
| SHT80-1                            | 25.40 | 15.88              | 15.88                               | 7.94              | 37.40                        | 24.13                   | 4.00                | -                   | 96.04                           | 98.00                          | 3.10                   |
| SHT100-1                           | 31.75 | 19.05              | 19.05                               | 9.54              | 44.10                        | 30.18                   | 4.80                | -                   | 149.50                          | 155.40                         | 4.38                   |
| SHT120-1                           | 38.10 | 22.23              | 25.40                               | 11.11             | 53.80                        | 36.20                   | 5.6                 | -                   | 186.40                          | 196.000                        | 6.70                   |
| SHT140-1                           | 44.45 | 25.40              | 25.40                               | 12.71             | 58.00                        | 42.24                   | 6.40                | -                   | 245.40                          | 254.80                         | 8.53                   |
| SHT160-1                           | 50.80 | 28.58              | 31.55                               | 14.27             | 68.80                        | 48.26                   | 7.25                | -                   | 280.30                          | 323.4                          | 11.10                  |

#Nota: Piastre a Profilo diritto, spessore Piastra esterna 4.0, spessore Piastra interna 4.8

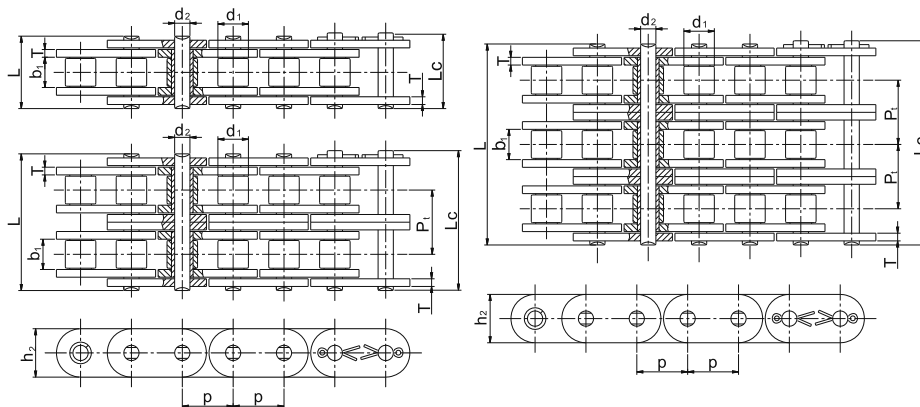
#Note: Straight side plates, outer plate thickness 4.0, inner Plate Thickness 4.8

Catene a rulli a **piastre dritte** ISO / Roller Chains with **Straight Side Plates** (A Series) ISO



SERIE EUROPEA A PIASTRE DRITTE ISO / STRAIGHT PLATES EUROPEAN SERIES ISO

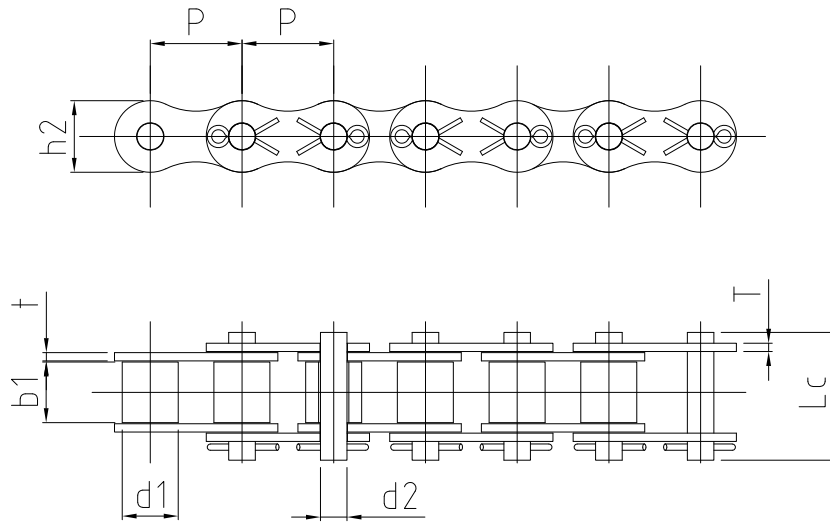
| Catena ISO/DIN<br>ISO/DIN Chain | Passo<br>Pitch |        | Diam. Rullo<br>Roller diameter | Larghezza interna<br>Width between inner plates | Diametro Perno<br>Pin diameter | Largh. catena ribadita<br>Riveted chain width |        | Altezza piastra<br>Inner plate depth | Passo trasv.<br>Transverse pitch | Spessore piastra<br>Plate thickness | Carico di rottura min.<br>Ultimate tensile strength | Carico di rottura medio<br>Average tensile strength | Peso al metro<br>Weight per meter |
|---------------------------------|----------------|--------|--------------------------------|---|--------------------------------|---|--------|--------------------------------------|----------------------------------|-------------------------------------|---|---|-----------------------------------|
|                                 | P              | P      | d <sub>1</sub> max             | b <sub>1</sub> min                              | d <sub>2</sub> max             | L max   | Lc max | h <sub>2</sub> max                   | Pt                               | t/T                                 | Q(ISO/DIN) min                                      | Q <sub>0</sub>                                      | q ≈                               |
|                                 | pollici        | mm     | mm                             | mm  | mm                             | mm  | mm     | mm                                   | mm                               | mm                                  | kN  | kN  | kg/m                              |
| 08B1SP                          | 1/2x5/16       | 12.70  | 8.51                           | 7.75  | 4.45                           | 16.70   | 18.20  | 11.80                                | -                                | 1.60                                | 17.80/18.00   | 19.50   | 0.80                              |
| 10B1SP                          | 5/8            | 15.875 | 10.16                          | 9.65  | 5.08                           | 19.50   | 20.90  | 14.70                                | -                                | 1.70                                | 22.20/22.40   | 26.90   | 1.06                              |
| 12B1SP                          | 3/4            | 19.05  | 12.07                          | 11.68   | 5.72                           | 22.50   | 25.20  | 16.00                                | -                                | 1.85                                | 28.90/29.00   | 31.00   | 1.32                              |
| 16B1SP                          | 1"             | 25.40  | 15.88                          | 17.02   | 8.28                           | 36.10   | 39.10  | 21.00                                | -                                | 4.09/3.10                           | 60.00   | 70.00   | 2.90                              |
| 20B1SP                          | 1"1/4          | 31.75  | 19.05                          | 19.56   | 10.19                          | 41.30   | 45.00  | 26.40                                | -                                | 4.60/3.60                           | 95.00   | 101.30  | 4.16                              |
| 24B1SP                          | 1"1/2          | 38.10  | 25.40                          | 25.40   | 14.63                          | 53.40   | 57.80  | 33.20                                | -                                | 5.80/4.80                           | 160.00  | 174.00  | 7.47                              |
| 28B1SP                          | 1"3/4          | 44.45  | 27.94                          | 30.99   | 15.90                          | 65.10   | 69.50  | 36.70                                | -                                | 7.50/6.50                           | 200.00  | 214.00  | 9.90                              |
| 32B1SP                          | 2"             | 50.80  | 29.21                          | 30.99   | 17.81                          | 66.00   | 71.00  | 42.00                                | -                                | 7.00/6.00                           | 250.00  | 267.50  | 10.45                             |
| 08B2SP                          | 1/2x5/16       | 12.70  | 8.51                           | 7.75  | 4.45                           | 31.20   | 32.20  | 11.80                                | 13.92                            | 1.60                                | 31.10/32.00   | 37.40   | 1.45                              |
| 10B2SP                          | 5/8            | 15.875 | 10.16                          | 9.65  | 5.08                           | 36.10   | 37.50  | 14.70                                | 16.59                            | 1.70                                | 44.50   | 57.80   | 2.00                              |
| 12B2SP                          | 3/4            | 19.05  | 12.07                          | 11.68   | 5.72                           | 42.00   | 44.70  | 16.00                                | 19.46                            | 1.85                                | 57.80   | 65.70   | 2.62                              |
| 16B2SP                          | 1"             | 25.40  | 15.88                          | 17.02   | 8.28                           | 68.00   | 71.00  | 21.00                                | 31.88                            | 4.09/3.10                           | 106.00  | 124.50  | 5.80                              |
| 20B2SP                          | 1"1/4          | 31.75  | 19.05                          | 19.56   | 10.19                          | 77.80   | 81.50  | 26.40                                | 36.45                            | 4.60/3.60                           | 170.00  | 210.00  | 8.23                              |
| 24B2SP                          | 1"1/2          | 38.10  | 25.40                          | 25.40   | 14.63                          | 101.70  | 106.20 | 33.20                                | 48.36                            | 5.80/4.80                           | 280.00  | 304.50  | 14.77                             |
| 28B2SP                          | 1"3/4          | 44.45  | 27.94                          | 30.99   | 15.90                          | 124.60  | 129.10 | 36.70                                | 59.56                            | 7.50/6.50                           | 360.00  | 385.20  | 19.68                             |
| 32B2SP                          | 2"             | 50.80  | 29.21                          | 30.99   | 17.81                          | 124.60  | 129.60 | 42.00                                | 58.55                            | 7.00/6.00                           | 450.00  | 477.00  | 20.62                             |
| 08B3SP                          | 1/2x5/16       | 12.70  | 8.51                           | 7.75  | 4.45                           | 45.10   | 46.10  | 11.80                                | 13.92                            | 1.60                                | 44.50/47.50   | 50.20   | 2.10                              |
| 10B3SP                          | 5/8            | 15.875 | 10.16                          | 9.65  | 5.08                           | 52.70   | 54.10  | 14.70                                | 16.59                            | 1.70                                | 66.70   | 79.60   | 2.87                              |
| 12B3SP                          | 3/4            | 19.05  | 12.07                          | 11.68   | 5.72                           | 61.50   | 64.20  | 16.00                                | 19.46                            | 1.85                                | 86.70   | 101.80  | 3.89                              |
| 16B3SP                          | 1"             | 25.40  | 15.88                          | 17.02   | 8.28                           | 99.80   | 102.90 | 21.00                                | 31.88                            | 4.09/3.10                           | 160.00  | 188.00  | 8.70                              |
| 20B3SP                          | 1"1/4          | 31.75  | 19.05                          | 19.56   | 10.19                          | 114.20  | 117.90 | 26.40                                | 36.45                            | 4.60/3.60                           | 250.00  | 266.60  | 11.34                             |
| 24B3SP                          | 1"1/2          | 38.10  | 25.40                          | 25.40   | 14.63                          | 150.10  | 154.60 | 33.20                                | 48.36                            | 5.80/4.80                           | 425.00  | 462.20  | 22.10                             |
| 28B3SP                          | 1"3/4          | 44.45  | 27.94                          | 30.99   | 15.90                          | 184.20  | 188.70 | 36.70                                | 59.56                            | 7.50/6.50                           | 530.00  | 561.80  | 29.47                             |
| 32B3SP                          | 2"             | 50.80  | 29.21                          | 30.99   | 17.81                          | 183.20  | 188.20 | 42.00                                | 58.55                            | 7.00/6.00                           | 670.00  | 710.20  | 30.85                             |

Catene a rulli a **piastre dritte** ASA / *Roller Chains with **Straight Side Plates** ANSI*

**SERIE AMERICANA ASA PIASTRE DRITTE / AMERICAN SERIES ANSI STRAIGHT PLATES**

| Catena<br>ASA<br><br>ANSI<br>Chain | Passo<br><i>Pitch</i> |        | Diam.<br>Rullo<br><i>Roller<br/>diameter</i> | Larghezza<br>interna<br><i>Width<br/>between<br/>inner<br/>plates</i> | Diametro<br>Perno<br><i>Pin<br/>diameter</i> | Largh. catena<br>ribadita<br><i>Riveted chain<br/>width</i> |           | Altezza<br>piastra<br><i>Inner<br/>plate<br/>depth</i> | Passo<br>trasv.<br><i>Transverse<br/>pitch</i> | Spessore<br>piastra<br><i>Plate<br/>thickness</i> | Carico di<br>rottura<br>min.<br><i>Ultimate<br/>tensile<br/>strength</i> | Carico di<br>rottura<br>medio<br><i>Average<br/>tensile<br/>strength</i> | Peso al<br>metro<br><i>Weight<br/>per<br/>meter</i> |
|------------------------------------|-----------------------|--------|--|---|--|---|-----------|--|--|---|--|--|---|
|                                    | P                     | P      | d <sub>1</sub><br>max                        | b <sub>1</sub><br>min   | d <sub>2</sub><br>max                        | L<br>max  | Lc<br>max | h <sub>2</sub><br>max                                  | Pt   | T   | Q(ISO/DIN)<br>min  | Q <sub>0</sub>   | q<br>≈  |
|                                    | pollici               | mm     | mm   | mm  | mm   | mm  | mm        | mm   | mm   | mm  | mm   | kN   | kN  |
| 40A1SP                             | ½                     | 12.70  | 7.95   | 7.85  | 3.96   | 16.60   | 18.80     | 12.00  | -  | 1.50  | 13.80/14.10  | 17.00  | 0.73  |
| 50A1SP                             | 5/8                   | 15.875 | 10.16  | 9.40  | 5.08   | 20.70   | 23.30     | 15.09  | -  | 2.06  | 21.80/22.20  | 26.40  | 1.23  |
| 60A1SP                             | ¾                     | 19.05  | 11.91  | 12.57   | 5.94   | 25.90   | 28.30     | 18.00  | -  | 2.44  | 31.10/31.80  | 38.80  | 1.78  |
| 80A1SP                             | 1"                    | 25.40  | 15.88  | 15.75   | 7.92   | 32.70   | 36.50     | 24.00  | -  | 3.26  | 55.60/56.70  | 64.90  | 3.09  |
| 100A1SP                            | 1"1/4                 | 31.75  | 19.05  | 18.90   | 9.53   | 40.40   | 44.70     | 30.00  | -  | 4.00  | 86.70/88.50  | 101.80   | 4.56  |
| 120A1SP                            | 1"1/2                 | 38.10  | 22.23  | 25.22   | 11.10  | 50.30   | 54.30     | 35.70  | -  | 4.80  | 124.60/127.00  | 147.00   | 6.86  |
| 140A1SP                            | 1"3/4                 | 44.45  | 25.40  | 25.22   | 12.70  | 54.40   | 59.00     | 41.00  | -  | 5.56  | 169.00/172.40  | 197.70   | 8.49  |
| 160A1SP                            | 2"                    | 50.80  | 28.58  | 31.55   | 14.27  | 64.80   | 69.60     | 47.80  | -  | 6.45  | 222.40/226.80  | 260.20   | 11.50   |
| 40A2SP                             | ½                     | 12.70  | 7.95   | 7.85  | 3.96   | 31.00   | 33.20     | 12.00  | 14.38  | 1.50  | 27.60/28.20  | 33.60  | 1.43  |
| 50A2SP                             | 5/8                   | 15.875 | 10.16  | 9.40  | 5.08   | 38.90   | 41.40     | 15.09  | 18.11  | 2.06  | 43.60/44.40  | 55.40  | 2.42  |
| 60A2SP                             | ¾                     | 19.05  | 11.91  | 12.57   | 5.94   | 48.80   | 51.10     | 18.00  | 22.78  | 2.44  | 62.30/63.60  | 83.20  | 3.53  |
| 80A2SP                             | 1"                    | 25.40  | 15.88  | 15.75   | 7.92   | 62.70   | 65.80     | 24.00  | 29.29  | 3.26  | 111.20/113.40  | 140.00   | 6.12  |
| 100A2SP                            | 1"1/4                 | 31.75  | 19.05  | 18.90   | 9.53   | 76.40   | 80.50     | 30.00  | 35.76  | 4.00  | 173.50/177.00  | 202.90   | 9.08  |
| 120A2SP                            | 1"1/2                 | 38.10  | 22.23  | 25.22   | 11.10  | 95.80   | 99.70     | 35.70  | 45.44  | 4.80  | 249.10/254.00  | 291.40   | 13.60   |
| 140A2SP                            | 1"3/4                 | 44.45  | 25.40  | 25.22   | 12.70  | 103.30  | 107.90    | 41.00  | 48.87  | 5.65  | 338.10/344.80  | 395.50   | 16.86   |
| 160A2SP                            | 2"                    | 50.80  | 28.58  | 31.55   | 14.27  | 123.30  | 128.10    | 47.80  | 58.55  | 6.45  | 444.80/453.60  | 520.40   | 22.90   |
| 40A3SP                             | ½                     | 12.70  | 7.95   | 7.85  | 3.96   | 45.40   | 47.60     | 12.00  | 14.38  | 1.50  | 41.40/42.30  | 50.00  | 2.14  |
| 50A3SP                             | 5/8                   | 15.875 | 10.16  | 9.40  | 5.08   | 57.00   | 59.50     | 15.09  | 18.11  | 2.06  | 65.40/66.60  | 77.80  | 3.62  |
| 60A3SP                             | ¾                     | 19.05  | 11.91  | 12.57   | 5.94   | 71.50   | 73.90     | 18.00  | 22.78  | 2.44  | 93.40/95.40  | 111.10   | 5.28  |
| 80A3SP                             | 1"                    | 25.40  | 15.88  | 15.75   | 7.92   | 91.70   | 95.10     | 24.00  | 29.29  | 3.26  | 166.80/170.10  | 198.40   | 9.10  |
| 100A3SP                            | 1"1/4                 | 31.75  | 19.05  | 18.90   | 9.53   | 112.20  | 116.30    | 30.00  | 35.76  | 4.00  | 260.20/265.50  | 309.60   | 13.60   |
| 120A3SP                            | 1"1/2                 | 38.10  | 22.23  | 25.22   | 11.10  | 141.40  | 145.20    | 35.70  | 45.44  | 4.80  | 373.70/381.00  | 437.20   | 20.43   |
| 140A3SP                            | 1"3/4                 | 44.45  | 25.40  | 25.22   | 12.70  | 152.20  | 156.80    | 41.00  | 48.87  | 5.56  | 507.10/517.20  | 593.30   | 25.23   |
| 160A3SP                            | 2"                    | 50.80  | 28.58  | 31.55   | 14.27  | 181.80  | 186.60    | 47.80  | 58.55  | 6.45  | 667.20/680.40  | 780.60   | 34.19   |

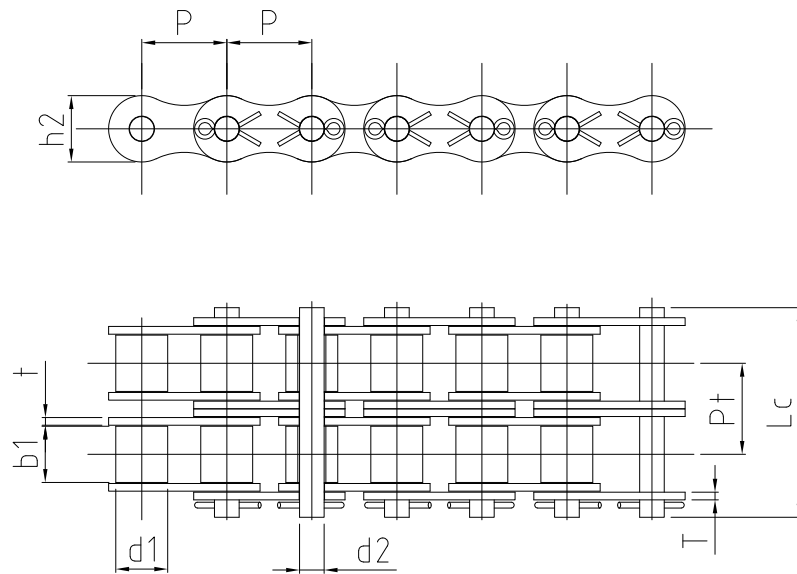


Catene a rulli **con copiglia** ASA / **Cotter Type** Roller Chains ANSI



SERIE AMERICANA ASA CON COPIGLIA / AMERICAN SERIES ANSI COTTERED

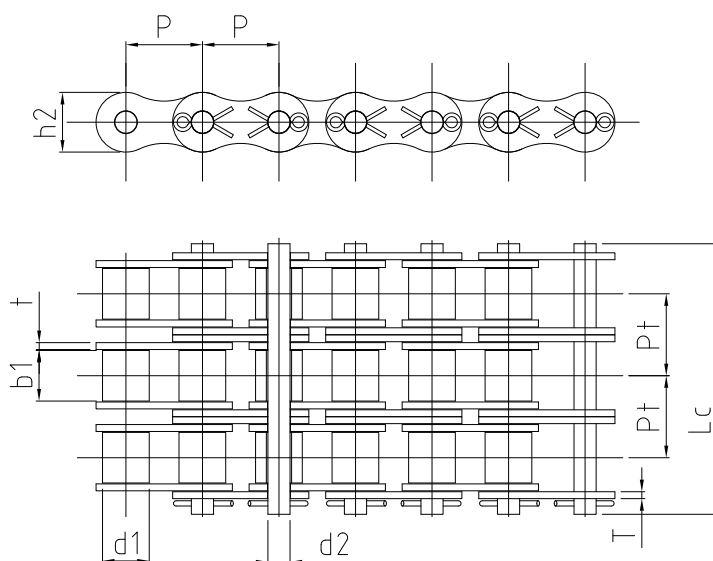
| Catena<br>ASA<br><br>ANSI<br>Chain | Passo<br><i>Pitch</i> |        | Diam.<br>Rullo<br><i>Roller<br/>diameter</i> | Larghezza<br>interna<br><i>Width<br/>between<br/>inner plates</i> | Diametro<br>Perno<br><i>Pin<br/>diameter</i> | Largh.<br>catena<br>ribadita<br><i>Riveted<br/>chain<br/>width</i> | Altezza<br>piastra<br><i>Inner<br/>plate<br/>depth</i> | Passo<br>trasv.<br><i>Transverse<br/>pitch</i> | Spessore<br>piastra<br><i>Plate<br/>thickness</i> | Carico di<br>rottura min.<br><i>Ultimate<br/>tensile<br/>strength</i> | Carico di<br>rottura<br>medio<br><i>Average<br/>tensile<br/>strength</i> | Peso al<br>metro<br><i>Weight<br/>per<br/>meter</i> |
|------------------------------------|-----------------------|--------|--|---|--|--|--|--|---|---|--|---|
|                                    | P                     | P      | d <sub>1</sub><br>max                        | b <sub>1</sub><br>min   | d <sub>2</sub><br>max                        | L<br>max   | h <sub>2</sub><br>max                                  | Pt   | t/T   | Q(ISO/DIN)<br>min   | Q <sub>0</sub>   | q<br>≈  |
|                                    | pollici               | mm     | mm   | mm  | mm   | mm   | mm   | mm   | mm  | mm  | kN   | kN  |
| 50A1C                              | 5/8                   | 15.875 | 10.16  | 9.40  | 5.09   | 22.59  | 15.09  | -  | 2.00  | 21.80/22.20   | 29.4   | 1.02  |
| 60A1C                              | 3/4                   | 19.05  | 11.91  | 12.57   | 5.96   | 27.75  | 18.10  | -  | 2.40  | 31.30/31.80   | 41.5   | 1.50  |
| 80A1C                              | 1"                    | 25.40  | 15.88  | 15.75   | 7.94   | 35.60  | 24.13  | -  | 3.20  | 55.60/56.70   | 71.5   | 2.60  |
| 100A1C                             | 1"1/4                 | 31.75  | 19.05  | 18.90   | 9.54   | 42.60  | 30.17  | -  | 4.00  | 87.00/88.50   | 109.2  | 3.91  |
| 120A1C                             | 1"1/2                 | 38.10  | 22.23  | 25.22   | 11.11  | 53.51  | 36.20  | -  | 4.80  | 125.00/127.00   | 156.9  | 5.62  |
| 140A1C                             | 1"3/4                 | 44.45  | 25.40  | 25.22   | 12.71  | 58.21  | 42.23  | -  | 5.65  | 170.00/172.40   | 212.0  | 7.50  |
| 160A1C                             | 2"                    | 50.80  | 28.58  | 31.55   | 14.29  | 69.08  | 48.26  | -  | 6.45  | 223.00/226.80   | 269.7  | 10.10   |
| 180A1C                             | 2"1/4                 | 57.15  | 35.71  | 35.48   | 17.46  | 78.45  | 54.30  | -  | 7.25  | 281.0   | 327.8  | 13.45   |
| 200A1C                             | 2"1/2                 | 63.50  | 39.68  | 37.85   | 19.85  | 85.15  | 60.33  | -  | 8.00  | 347.00/353.80   | 410.00   | 16.15   |
| 240A1C                             | 3"                    | 76.20  | 47.63  | 47.35   | 23.81  | 100.71   | 72.39  | -  | 9.50  | 500.00/510.30   | 585.4  | 23.20   |

Catene a rulli **con copiglia** ASA / **Cotter Type** Roller Chains ANSI


## SERIE AMERICANA ASA CON COPIGLIA / AMERICAN SERIES ANSI COTTERED

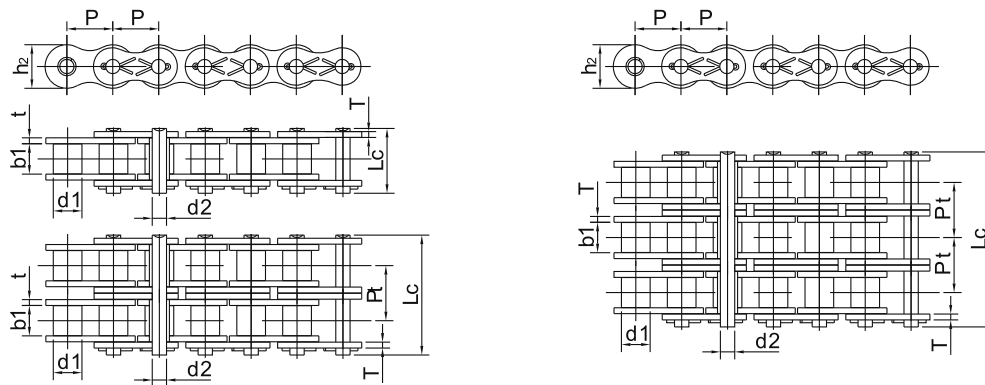
| Catena<br>ASA<br><br>ANSI<br>Chain | Passo<br><i>Pitch</i> |        | Diam.<br>Rullo<br><br><i>Roller<br/>diameter</i> | Larghezza<br>interna<br><br><i>Width<br/>between<br/>inner plates</i> | Diametro<br>Perno<br><br><i>Pin<br/>diameter</i> | Largh.<br>catena<br>ribadita<br><br><i>Riveted<br/>chain<br/>width</i> | Altezza<br>piastra<br><br><i>Inner<br/>plate<br/>depth</i> | Passo<br>trasv.<br><br><i>Transverse<br/>pitch</i> | Spessore<br>piastra<br><br><i>Plate<br/>thickness</i> | Carico di<br>rottura min.<br><br><i>Ultimate<br/>tensile<br/>strength</i> | Carico di<br>rottura<br>medio<br><br><i>Average<br/>tensile<br/>strength</i> | Peso al<br>metro<br><br><i>Weight<br/>per<br/>meter</i> |
|------------------------------------|-----------------------|--------|--|---|--|--|--|--|---|---|--|---|
|                                    | P                     | P      | d <sub>1</sub><br>max                            | b <sub>1</sub><br>min   | d <sub>2</sub><br>max                            | L<br>max   | h <sub>2</sub><br>max                                      | Pt   | t/T   | Q(ISO/DIN)<br>min   | Q <sub>0</sub>   | q<br>≈  |
|                                    | pollici               | mm     | mm   | mm  | mm   | mm   | mm   | mm   | mm  | mm  | kN   | kN  |
| 50A2C                              | 5/8                   | 15.875 | 10.16  | 9.40  | 5.09   | 40.70  | 15.09  | 18.11  | 2.00  | 43.60/44.40   | 56.0   | 2.00  |
| 60A2C                              | 3/4                   | 19.05  | 11.91  | 12.57   | 5.96   | 50.53  | 18.10  | 22.78  | 2.40  | 62.60/63.60   | 82.4   | 2.92  |
| 80A2C                              | 1"                    | 25.40  | 15.88  | 15.75   | 7.94   | 64.89  | 24.13  | 29.29  | 3.20  | 111.20/113.40   | 143.0  | 5.15  |
| 100A2C                             | 1"1/4                 | 31.75  | 19.05  | 18.90   | 9.54   | 78.36  | 30.17  | 35.76  | 4.00  | 174.00/177.00   | 204.0  | 7.80  |
| 120A2C                             | 1"1/2                 | 38.10  | 22.23  | 25.22   | 11.11  | 98.95  | 36.20  | 45.44  | 4.80  | 250.00/254.00   | 313.8  | 11.70   |
| 140A2C                             | 1"3/4                 | 44.45  | 25.40  | 25.22   | 12.71  | 107.08   | 42.23  | 48.87  | 5.65  | 340.00/344.80   | 421.7  | 15.14   |
| 160A2C                             | 2"                    | 50.80  | 28.58  | 31.55   | 14.29  | 127.63   | 48.26  | 58.55  | 6.45  | 446.00/453.60   | 539.4  | 20.14   |
| 180A2C                             | 2"1/4                 | 57.15  | 35.71  | 35.48   | 17.46  | 144.29   | 54.30  | 65.84  | 7.25  | 562.0   | 655.7  | 29.22   |
| 200A2C                             | 2"1/2                 | 63.50  | 39.68  | 37.85   | 19.85  | 156.70   | 60.33  | 71.55  | 8.00  | 694.00/707.60   | 820.0  | 32.24   |
| 240A2C                             | 3"                    | 76.20  | 47.63  | 47.35   | 23.81  | 188.54   | 72.39  | 87.83  | 9.50  | 1000.0/1020.6   | 1170.8   | 45.23   |

Catene a rulli con copiglia ASA / **Cotter Type** Roller Chains ANSI



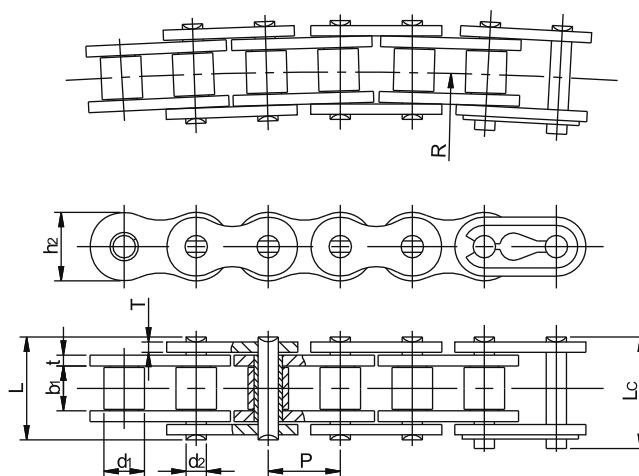
SERIE AMERICANA ASA CON COPIGLIA / AMERICAN SERIES ANSI COTTERED

| Catena<br>ASA<br><br>ANSI<br>Chain | Passo<br><i>Pitch</i> |        | Diam.<br>Rullo<br><br><i>Roller<br/>diameter</i> | Larghezza<br>interna<br><br><i>Width<br/>between<br/>inner plates</i> | Diametro<br>Perno<br><br><i>Pin<br/>diameter</i> | Largh.<br>catena<br>ribadita<br><br><i>Riveted<br/>chain<br/>width</i> | Altezza<br>piastra<br><br><i>Inner<br/>plate<br/>depth</i> | Passo<br>trasv.<br><br><i>Transverse<br/>pitch</i> | Spessore<br>piastra<br><br><i>Plate<br/>thickness</i> | Carico di<br>rottura min.<br><br><i>Ultimate<br/>tensile<br/>strength</i> | Carico di<br>rottura<br>medio<br><br><i>Average<br/>tensile<br/>strength</i> | Peso al<br>metro<br><br><i>Weight<br/>per<br/>meter</i> |
|------------------------------------|-----------------------|--------|--|---|--|--|--|--|---|---|--|---|
|                                    | P                     | P      | d <sub>1</sub><br>max                            | b <sub>1</sub><br>min   | d <sub>2</sub><br>max                            | L<br>max   | h <sub>2</sub><br>max                                      | Pt   | t/T   | Q(ISO/DIN)<br>min   | Q <sub>0</sub>   | q<br>≈  |
|                                    | pollici               | mm     | mm   | mm  | mm   | mm   | mm   | mm   | mm  | mm  | kN   | kN  |
| 50A3C                              | 5/8                   | 15.875 | 10.16  | 9.40  | 5.09   | 58.81  | 15.09  | 18.11  | 2.00  | 65.40/66.60   | 82.0   | 3.09  |
| 60A3C                              | 3/4                   | 19.05  | 11.91  | 12.57   | 5.96   | 73.31  | 18.10  | 22.78  | 2.40  | 93.90/95.40   | 115.0  | 4.54  |
| 80A3C                              | 1"                    | 25.40  | 15.88  | 15.75   | 7.94   | 94.18  | 24.13  | 29.29  | 3.20  | 166.80/170.10   | 208.0  | 7.89  |
| 100A3C                             | 1"1/4                 | 31.75  | 19.05  | 18.90   | 9.54   | 114.12   | 30.17  | 35.76  | 4.00  | 261.00/265.50   | 310.0  | 11.77   |
| 120A3C                             | 1"1/2                 | 38.10  | 22.23  | 25.22   | 11.11  | 144.39   | 36.20  | 45.44  | 4.80  | 375.00/381.00   | 470.7  | 17.53   |
| 140A3C                             | 1"3/4                 | 44.45  | 25.40  | 25.22   | 12.71  | 155.95   | 42.23  | 48.87  | 5.65  | 510.00/517.20   | 632.5  | 22.20   |
| 160A3C                             | 2"                    | 50.80  | 28.58  | 31.55   | 14.29  | 186.18   | 48.26  | 58.55  | 6.45  | 669.00/680.40   | 809.0  | 30.02   |
| 180A3C                             | 2"1/4                 | 57.15  | 35.71  | 35.48   | 17.46  | 210.13   | 54.30  | 65.84  | 7.25  | 843.0   | 983.6  | 38.22   |
| 200A3C                             | 2"1/2                 | 63.50  | 39.68  | 37.85   | 19.85  | 228.25   | 60.33  | 71.55  | 8.00  | 1041.0/1061.4   | 1230.0   | 49.03   |
| 240A3C                             | 3"                    | 76.20  | 47.63  | 47.35   | 23.81  | 276.37   | 72.39  | 87.83  | 9.50  | 1500.0/1530.9   | 1756.2   | 71.6  |

**Catene a rulli con copiglia ASA H / *Cotter Type* Roller Chains ANSI H**

**SERIE AMERICANA ASA H CON COPIGLIA / AMERICAN SERIES ANSI H COTTERED**

| Catena<br>ASA H<br><br>ANSI H<br>Chain | Passo<br><i>Pitch</i> |        | Diam.<br>Rullo<br><i>Roller<br/>diameter</i> | Larghezza<br>interna<br><i>Width<br/>between<br/>inner<br/>plates</i> | Diametro<br>Perno<br><i>Pin<br/>diameter</i> | Largh.<br>catena<br>ribadita<br><i>Riveted<br/>chain<br/>width</i> | Altezza<br>piastra<br><i>Inner<br/>plate<br/>depth</i> | Passo<br>trasv.<br><i>Transverse<br/>pitch</i> | Spessore<br>piastra<br><i>Plate<br/>thickness</i> | Carico di<br>rottura<br>min.<br><i>Ultimate<br/>tensile<br/>strength</i> | Carico di<br>rottura<br>medio<br><i>Average<br/>tensile<br/>strength</i> | Peso al<br>metro<br><i>Weight<br/>per<br/>meter</i> |
|--|-----------------------|--------|--|---|--|--|--|--|---|--|--|---|
|  | P                     | P      | d <sub>1</sub><br>max                        | b <sub>1</sub><br>min   | d <sub>2</sub><br>max                        | Lc<br>max  | h <sub>2</sub><br>max                                  | Pt   | t/T   | Q <sub>min</sub>   | Q <sub>0</sub>   | q<br>≈  |
|  | pollici               | mm     | mm   | mm  | mm   | mm   | mm   | mm   | mm  | mm   | kN   | kN  |
| 40A1HC                                 | ½                     | 12.70  | 7.95   | 7.85  | 3.96   | 19.70  | 12.00  | -  | 2.00  | 13.9   | 20.40  | 0.82  |
| 50A1HC                                 | 5/8                   | 15.785 | 10.16  | 9.40  | 5.09   | 24.90  | 15.09  | -  | 2.40  | 21.8   | 30.20  | 1.25  |
| 60A1HC                                 | ¾                     | 19.05  | 11.91  | 12.57   | 5.96   | 31.60  | 18.08  | -  | 3.20  | 31.3   | 42.70  | 1.87  |
| 80A1HC                                 | 1"                    | 25.40  | 15.88  | 15.75   | 7.94   | 39.40  | 24.13  | -  | 4.00  | 55.6   | 71.40  | 3.10  |
| 100A1HC                                | 1 1/4                 | 31.75  | 19.05  | 18.90   | 9.54   | 46.90  | 30.17  | -  | 4.80  | 87   | 112.4  | 4.52  |
| 120A1HC                                | 1 1/2                 | 38.10  | 22.23  | 25.22   | 11.11  | 57.50  | 36.20  | -  | 5.65  | 125  | 160.9  | 6.60  |
| 140A1HC                                | 1 3/4                 | 44.45  | 25.40  | 25.22   | 12.71  | 62.50  | 42.23  | -  | 6.45  | 170  | 217.3  | 8.30  |
| 160A1HC                                | 2"                    | 50.80  | 28.58  | 31.55   | 14.29  | 72.70  | 48.26  | -  | 7.25  | 223  | 285.8  | 10.30   |
| 200A1HC                                | 2 1/2                 | 63.50  | 39.68  | 37.85   | 19.85  | 93.50  | 60.33  | -  | 9.50  | 347  | 444.5  | 19.16   |
| 60A2HC                                 | 3/4                   | 19.05  | 11.91  | 12.57   | 5.96   | 57.70  | 18.08  | 26.11  | 3.20  | 62.6   | 84.5   | 3.71  |
| 80A2HC                                 | 1"                    | 25.40  | 15.88  | 15.75   | 7.94   | 72.20  | 24.13  | 32.59  | 4.00  | 112.2  | 145.3  | 6.15  |
| 100A2HC                                | 1 1/4                 | 31.75  | 19.05  | 18.90   | 9.54   | 86.00  | 30.17  | 39.09  | 4.80  | 174  | 225.9  | 9.03  |
| 120A2HC                                | 1 1/2                 | 38.10  | 22.23  | 25.22   | 11.11  | 106.4  | 36.20  | 48.87  | 5.65  | 250  | 322.7  | 13.13   |
| 140A2HC                                | 1 3/4                 | 44.45  | 25.40  | 25.22   | 12.71  | 114.7  | 42.23  | 52.20  | 6.45  | 340  | 437.7  | 16.60   |
| 160A2HC                                | 2"                    | 50.80  | 28.58  | 31.55   | 14.29  | 134.9  | 48.26  | 61.90  | 7.25  | 446  | 571.6  | 20.20   |
| 200A2HC                                | 2 1/2                 | 63.50  | 39.68  | 37.85   | 19.85  | 171.8  | 60.33  | 78.31  | 9.25  | 964  | 894.9  | 38.11   |
| 60A3HC                                 | ¾                     | 19.05  | 11.91  | 12.57   | 5.96   | 83.84  | 18.08  | 26.11  | 3.20  | 93.9   | 113.9  | 5.54  |
| 80A3HC                                 | 1"                    | 25.40  | 15.88  | 15.75   | 7.94   | 104.6  | 24.13  | 32.59  | 4.00  | 166.8  | 203.5  | 9.42  |
| 100A3HC                                | 1 1/4                 | 31.75  | 19.05  | 18.90   | 9.54   | 125.1  | 30.17  | 39.09  | 4.80  | 261  | 314.8  | 12.96   |
| 120AH3C                                | 1 1/2                 | 38.10  | 22.23  | 25.22   | 11.11  | 155.2  | 36.20  | 48.87  | 5.65  | 375  | 444.7  | 19.64   |
| 140A3HC                                | 1 3/4                 | 44.45  | 25.40  | 25.22   | 12.71  | 166.9  | 42.23  | 52.20  | 6.45  | 510  | 598.4  | 24.90   |
| 160A3HC                                | 2"                    | 50.80  | 28.58  | 31.55   | 14.29  | 196.8  | 48.26  | 61.90  | 7.25  | 669  | 787.3  | 30.10   |
| 200A3HC                                | 2 1/2                 | 63.50  | 39.68  | 37.85   | 19.85  | 250.1  | 60.33  | 78.31  | 9.25  | 1041   | 1228.2   | 57.05   |

Catene a rulli per curve / Side Bow Chains



SERIE EUROPEA ISO PER CURVE / SIDE BOW EUROPEAN SERIES ISO  
 SERIE AMERICANA ASA PER CURVE / SIDE BOW AMERICAN SERIES ANSI

| Catena<br>Chain | Passo<br>Pitch | Diam.<br>Rullo<br>Roller<br>diameter | Larghezza<br>interna<br>Width<br>between<br>inner<br>plates | Diametro<br>Perno<br>Pin<br>diameter | Largh.<br>catena<br>ribadita<br>Riveted<br>chain<br>width |           | Altezza<br>piastra<br>Inner<br>plate<br>depth | Spessore<br>piastra<br>Plate<br>thickness | Raggio<br>curvatura<br>laterale<br>Side<br>bow<br>radius | Carico di<br>rottura<br>min.<br>Ultimate<br>tensile<br>strength | Carico di<br>rottura<br>medio<br>Average<br>tensile<br>strength | Peso al<br>metro<br>Weight<br>per meter |
|-----------------|----------------|--------------------------------------|---|--------------------------------------|---|-----------|---|---|--|---|---|---|
|                 | P              | d <sub>1</sub><br>max                | b <sub>1</sub><br>min                                       | d <sub>2</sub><br>max                | L<br>max  | Lc<br>max | h <sub>2</sub><br>max                         | t/T                                       | R  | Q   | Q <sub>0</sub>  | q<br>≈                                  |
|                 | mm             | mm                                   | mm  | mm                                   | mm  | mm        | mm  | mm  | mm   | kN/LB   | kN  | kg/m                                    |
| 40A1SB          | 12.7           | 7.95                                 | 7.85  | 3.96                                 | 16.90   | 18.10     | 11.70   | 1.50                                      | 350  | 13.80/3136  | 15.20   | 0.80                                    |
| 43A1SB          | 12.7           | 7.95                                 | 7.85  | 3.45                                 | 18.30   | 19.50     | 11.70   | 1.50                                      | 305  | 12.00/2727  | 13.20   | 0.64                                    |
| 50A1SB          | 15.875         | 10.16                                | 9.40  | 4.37                                 | 20.70   | 22.70     | 15.09   | 2.00                                      | 400  | 20.60/4681  | 22.70   | 1.09                                    |
| 60A1SB          | 19.05          | 11.91                                | 12.57   | 5.34                                 | 26.60   | 28.40     | 18.10   | 2.40                                      | 500  | 15.70/3568  | 17.30   | 1.42                                    |
| 63A1SB          | 19.05          | 11.91                                | 12.68   | 5.08                                 | 28.80   | 30.60     | 17.20   | 2.4/2.0                                   | 350  | 12.50/2840  | 20.00   | 1.40                                    |
| 80A1SB          | 25.40          | 15.88                                | 15.75   | 7.19                                 | 34.00   | 37.30     | 24.00   | 3.20                                      | 711  | 40.90/9201  | 42.00   | 2.60                                    |
| 08B1SB          | 12.70          | 8.51                                 | 7.75  | 3.97                                 | 17.40   | 18.70     | 11.80   | 1.60                                      | 400  | 14.00/3182  | 15.40   | 0.70                                    |
| 08B1SBF         | 12.70          | 8.51                                 | 7.75  | 3.97                                 | 16.30   | 17.60     | 11.80   | 1.6/1.2                                   | 400  | 12.80/2909  | 14.10   | 0.65                                    |
| 10B1SB          | 15.875         | 10.16                                | 9.65  | 4.50                                 | 20.10   | 21.50     | 14.70   | 1.70                                      | 400  | 15.60/3545  | 17.20   | 0.93                                    |
| 12B1SB          | 19.05          | 12.07                                | 11.68   | 5.12                                 | 23.10   | 24.80     | 16.00   | 1.85                                      | 500  | 20.50/4658  | 22.60   | 1.16                                    |
| 16B1SB          | 25.40          | 15.88                                | 17.22   | 7.90                                 | 36.50   | 39.70     | 21.00   | 3.7/3.0                                   | 500  | 55.6/12635  | 64.00   | 2.53                                    |
| C2050SB         | 31.75          | 10.16                                | 9.40  | 5.08                                 | 21.30   | 22.60     | 15.00   | 2.03                                      | 800  | 21.80/4954  | 24.10   | 0.84                                    |

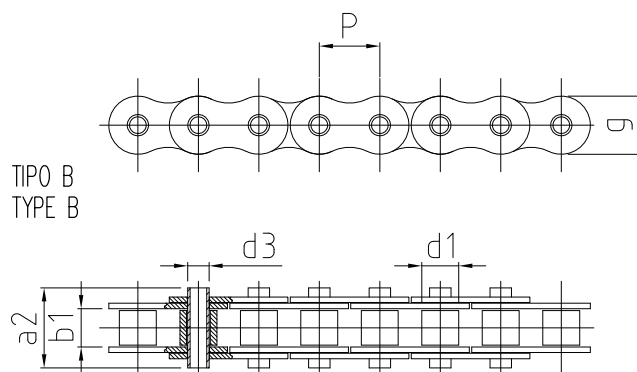
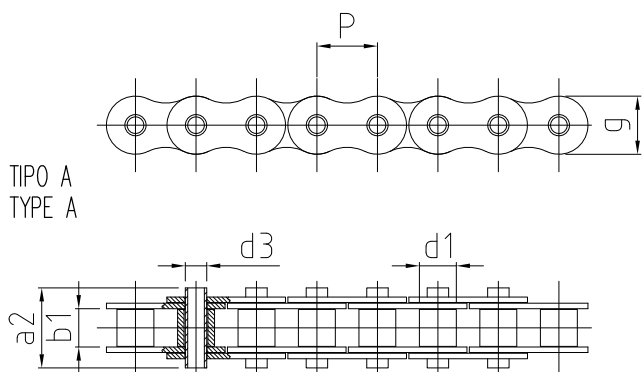
**Catene a rulli a perni forati / Roller Chains with Hollow Pins**

Catene costruite con il preciso intento d'aiutare l'utilizzatore nell'adozione di attacchi personalizzati, comodamente adattabili a queste catene secondo le normative unificate.

Nota: Tutte le dimensioni indicate sono espresse in mm.

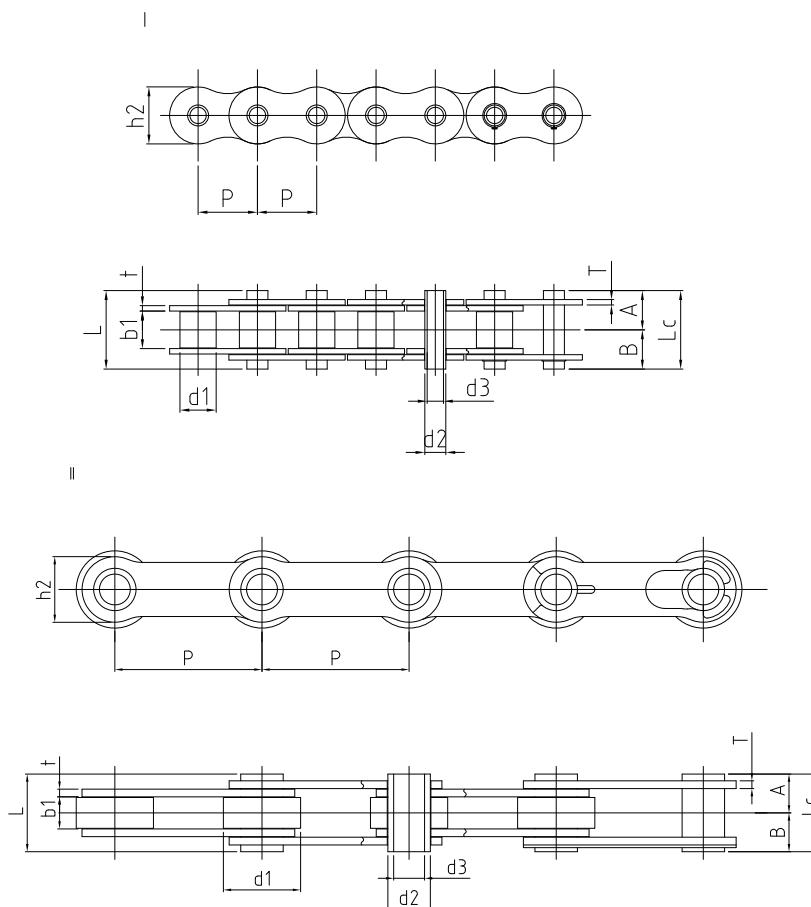
*Especially manufactured to help the customer use different attachments, easily adaptable to these chains, in accordance with the current unified regulations.*

*Note: All dimensions are expressed in mm.*


**SERIE EUROPEA ISO A PERNI FORATI / ISO EUROPEAN SERIES HOLLOW PINS**
**SERIE AMERICANA ASA A PERNI FORATI / ANSI AMERICAN SERIES HOLLOW PINS**

| Catena<br>Chain | P      | p    | b <sub>1</sub><br>mm | d <sub>3</sub> | d <sub>1</sub><br>mm | a <sub>2</sub><br>mm | g<br>mm | F <sub>B</sub><br>min | q<br>Kg/m | Tipo<br>Type |
|-----------------|--------|------|----------------------|----------------|----------------------|----------------------|---------|-----------------------|-----------|--------------|
|                 | mm     | inch | min.                 | mm             | max.                 | max.                 | max.    | N                     | ≈         |              |
| 08B1HP          | 12.7   | 1/2" | 7.75                 | 4.5            | 8.51                 | 16.8                 | 12.2    | 13.500                | 0.60      | A            |
| 10B1HP          | 15.875 | 5/8" | 9.65                 | 5.0            | 10.16                | 18.6                 | 14.3    | 14.500                | 0.83      | A            |
| 12B1HP          | 19.05  | 3/4" | 11.68                | 5.75           | 12.07                | 24.0                 | 16.5    | 18.500                | 1.05      | A            |
| 08B1HP          | 12.7   | 1/2" | 7.75                 | 4.40           | 8.51                 | 17.0                 | 11.7    | 14.000                | 0.68      | B            |
| 10B1HP          | 15.875 | 5/8" | 9.65                 | 5.10           | 10.16                | 19.5                 | 14.0    | 15.000                | 0.87      | B            |
| 12B1HP          | 19.05  | 3/4" | 11.68                | 5.70           | 12.07                | 22.5                 | 18.0    | 21.000                | 1.10      | B            |
| 60A1HP          | 19.05  | 3/4" | 12.70                | 5.97           | 11.91                | 25.0                 | 18.0    | 25.000                | 1.30      | B            |
| 16B1HP          | 25.4   | 1"   | 17.02                | 8.10           | 15.88                | 36.0                 | 21.0    | 50.000                | 2.40      | B            |

Catene da trasporto a perni forati con **rullo folle** / *Hollow Pins Chains with Double Direction Roller*



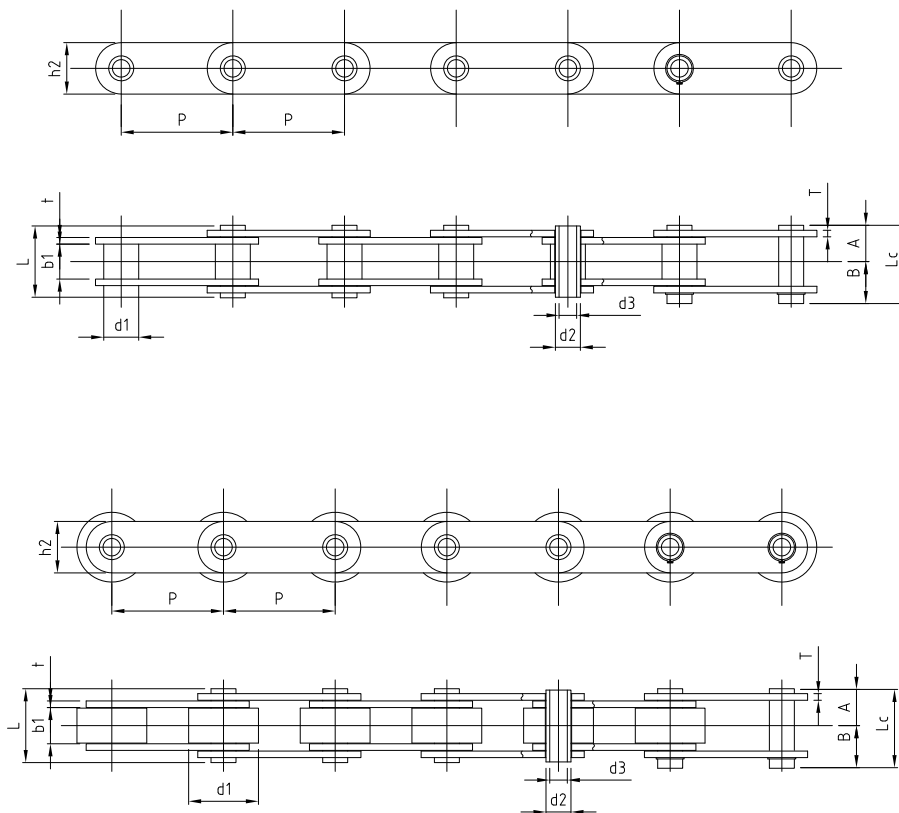
| Catena<br>Chain | Passo<br>Pitch | Diam.<br>Bussola<br>Bush<br>Diameter | Larghezza<br>interna<br>Width<br>between<br>inner<br>plates | Dimensioni Perno<br>Pin dimensions |                       |       |       |            |                         | Spessore<br>piastra<br>Plate<br>thickness | Altezza<br>piastra<br>Inner<br>plate<br>depth | Carico di<br>rottura<br>min.<br>Ultimate<br>tensile<br>strength | Tipo<br>Type |
|-----------------|----------------|--------------------------------------|---|------------------------------------|-----------------------|-------|-------|------------|-------------------------|---|---|---|--------------|
|                 | P              | d <sub>1</sub><br>max                | b <sub>1</sub><br>min                                       | d <sub>2</sub><br>max              | d <sub>3</sub><br>max | A     | B     | L<br>(A+A) | L <sub>c</sub><br>(A+b) | t/T                                       | h <sub>2</sub><br>max                         | Q<br>min  |              |
|                 | mm             | mm                                   | mm  | mm                                 | mm                    | mm    | mm    | mm         | mm                      | mm  | mm  | KN  |              |
| 40HPDD          | 12.70          | 7.95                                 | 7.95  | 5.68                               | 4.00                  | 8.10  | 9.40  | 16.2       | 17.5                    | 1.50                                      | 11.70   | 13.2  | I            |
| 50HPDD          | 15.875         | 10.16                                | 9.53  | 7.24                               | 5.12                  | 10.3  | 11.7  | 20.6       | 22.0                    | 2.00                                      | 14.60   | 20.6  | I            |
| 60HPDD          | 19.05          | 11.91                                | 12.70   | 8.37                               | 5.99                  | 12.90 | 14.3  | 25.8       | 27.2                    | 2.40                                      | 17.50   | 31.4  | I            |
| 80HPDD          | 25.40          | 15.88                                | 15.88   | 11.24                              | 8.02                  | 16.30 | 17.80 | 32.6       | 34.1                    | 3.20                                      | 23.00   | 53.0  | I            |
| *081HRNP        | 12.70          | 7.75                                 | 3.30  | 5.54                               | 3.55                  | 5.10  | 6.10  | 10.2       | 11.2                    | 1.10                                      | 10.5  | 10.0  | I            |
| 12BHPDD         | 19.05          | 12.07                                | 11.68   | 8.09                               | 6.00                  | 11.35 | 12.55 | 22.7       | 23.9                    | 1.90                                      | 16.0  | 14.0  | I            |
| #P38.1HB        | 38.10          | 20.00                                | 8.00  | 11.0                               | 8.00                  | 9.75  | 10.35 | 19.5       | 20.1                    | 2.00                                      | 17.0  | 28.0  | II           |
| #P50.8HB        | 50.80          | 30.00                                | 11.00   | 12.0                               | 8.11                  | 13.50 | 14.35 | 27.0       | 27.85                   | 3.00                                      | 26.0  | 50.0  | II           |

\*Rullo Nichelato: nella tabella d1 indica il diametro esterno del rullo

\*Nickel-plated Roller: d1 in the table indicates the external diameter of the roller

# Catena a Rullo: nella tabella d1 indica il diametro esterno del rullo

# Roller Chain: d1 in the table indicates the external diameter of the roller

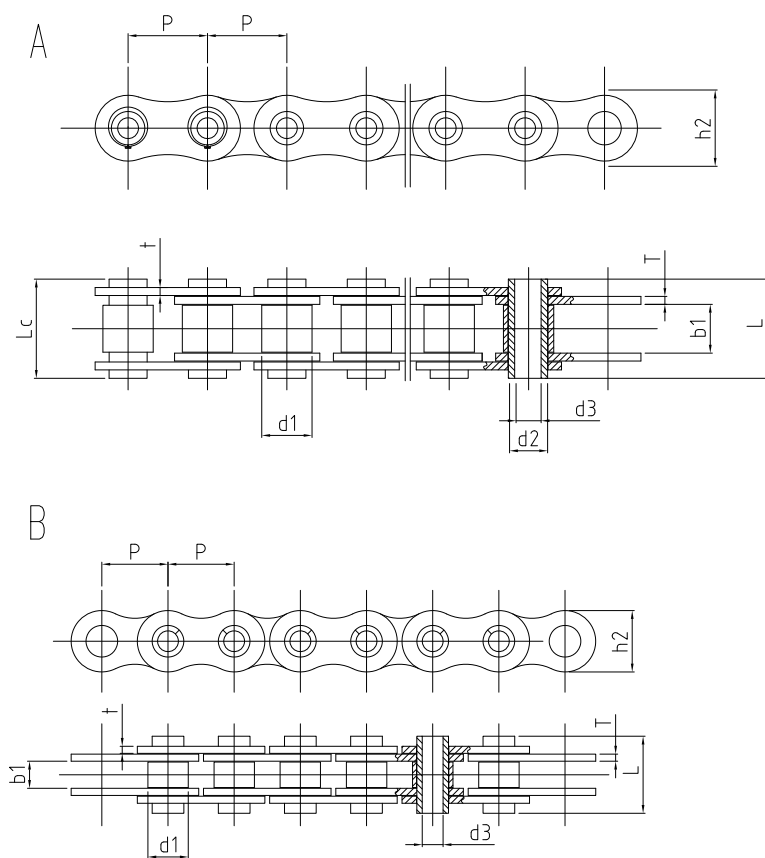
Catene da trasporto a **perni forati** / **Hollow Pins Conveyor Chains**


| Catena<br>Chain     | Passo<br>Pitch | Diam.<br>Bussola<br>Bush<br>Diameter | Larghezza<br>interna<br>Width<br>between<br>inner<br>plates | Dimensioni Perno<br>Pin dimensions |                       |       |       |            |                         | Spessore<br>piastra<br>Plate<br>thickness | Altezza<br>piastra<br>Inner<br>plate<br>depth | Carico di<br>rottura<br>min.<br>Ultimate<br>tensile<br>strength | Tipo<br>Type |
|---------------------|----------------|--------------------------------------|---|------------------------------------|-----------------------|-------|-------|------------|-------------------------|---|---|---|--------------|
|                     | P              | d <sub>1</sub><br>max                | b <sub>1</sub><br>min                                       | d <sub>2</sub><br>max              | d <sub>3</sub><br>max | A     | B     | L<br>(A+A) | L <sub>c</sub><br>(A+b) | t/T                                       | h <sub>2</sub><br>max                         | Q<br>min  |              |
|                     | mm             | mm                                   | mm  | mm                                 | mm                    | mm    | mm    | mm         | mm                      | mm  | mm  | KN  |              |
| C2040HP<br>#C2042HP | 25.40          | 7.95<br>15.88                        | 7.95  | 5.68                               | 4.00                  | 8.10  | 9.40  | 16.2       | 17.5                    | 1.5                                       | 11.70   | 13.2  | I<br>II      |
| C2050HP<br>#C2052HP | 31.75          | 10.16<br>19.05                       | 9.53  | 7.24                               | 5.12                  | 10.3  | 11.7  | 20.6       | 22.0                    | 2.0                                       | 14.60   | 20.6  | I<br>II      |
| C2060HP<br>#C2062HP | 38.10          | 11.91<br>22.23                       | 12.70   | 8.37                               | 5.99                  | 12.90 | 14.3  | 25.8       | 27.2                    | 2.4                                       | 17.50   | 31.4  | I<br>II      |
| C2080HP<br>#C2082HP | 50.80          | 15.88<br>28.58                       | 15.88   | 11.24                              | 8.02                  | 16.30 | 17.80 | 32.6       | 34.1                    | 3.2                                       | 23.00   | 53.0  | I<br>II      |
| #P76.2HB            | 76.20          | 47.60                                | 18.50   | 18.30                              | 12.41                 | 24.45 | 25.65 | 48.9       | 50.1                    | 5.0                                       | 40.0  | 132.0   | II           |
| #P101.6HB           | 101.6          | 66.70                                | 26.00   | 25.00                              | 20.31                 | 31.50 | 32.90 | 63.0       | 64.4                    | 8.0/6.0                                   | 50.0  | 150.0   | II           |
| #P101.6HBa          | 101.6          | 66.70                                | 30.70   | 32.00                              | 20.70                 | 43.60 | 45.00 | 87.2       | 88.6                    | 12.7/10.0                                 | 60.0  | 500.0   | II           |

# Catena a Rullo: nella tabella d1 indica il diametro esterno del rullo  
 # Roller Chain: d1 in the table indicates the external diameter of the roller

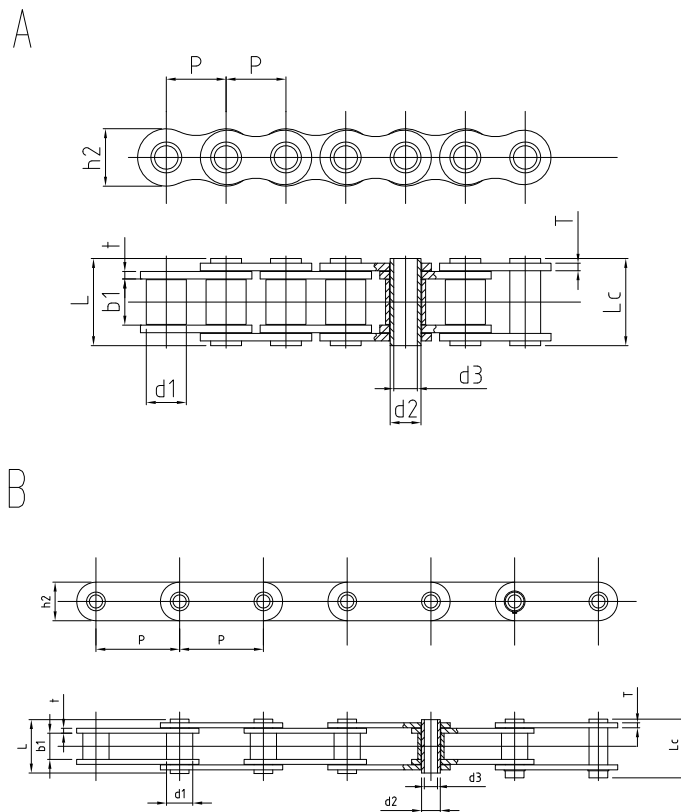


Catene da trasporto a **perni forati** / **Hollow Pins Conveyor Chains**



| Catena<br>Chain | Passo<br>Pitch | Diam.<br>Bussola<br>Bush<br>Diameter | Larghezza<br>interna<br>Width<br>between<br>inner<br>plates | Diametro Perno<br>Pin diameter |                       | Lungh. catena<br>ribadita<br>Riveted chain<br>length |                       | Altezza<br>piastra<br>Inner<br>plate<br>depth | Spessore<br>piastra<br>Plate<br>thickness | Carico di<br>rottura<br>min.<br>Ultimate<br>tensile<br>strength | Tipo<br>Type |
|-----------------|----------------|--------------------------------------|---|--------------------------------|-----------------------|--|-----------------------|---|---|---|--------------|
|                 | p              | d <sub>1</sub><br>max                | b <sub>1</sub><br>min                                       | d <sub>2</sub><br>max          | d <sub>3</sub><br>max | L<br>max   | L <sub>c</sub><br>max | h <sub>2</sub><br>max                         | t/T                                       | Q<br>min  |              |
|                 | mm             | mm                                   | mm  | mm                             | mm                    | mm   | mm                    | mm  | mm  | KN  |              |
| 10BHR           | 15.875         | 10.16                                | 6.5   | 7.6                            | 5.0                   | 17.0   | -                     | 14.72   | 1.7                                       | 15  | B            |
| 12BHR           | 19.05          | 12.07                                | 11.86   | 8.03                           | 5.41                  | 22.5   | 23.8                  | 15.8  | 1.9                                       | 25  | A            |
| 12BHRa          | 19.05          | 12.07                                | 11.70   | 8.03                           | 5.0                   | 22.5   | 23.8                  | 15.8  | 1.9                                       | 25  | A            |

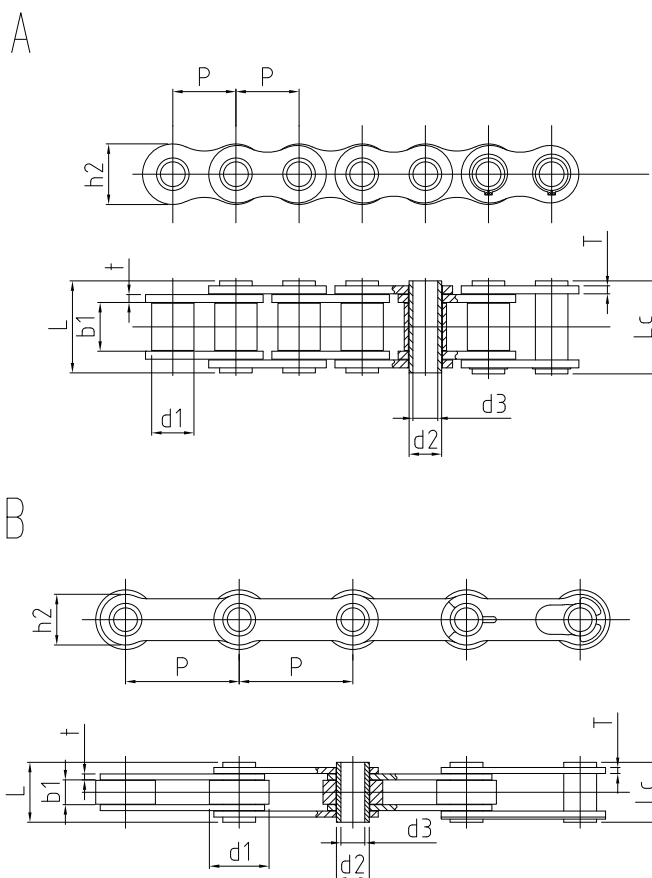
Catena a Rullo: nella tabella d1 indica il diametro esterno del rullo  
 Roller Chain: d1 in the table indicates the external diameter of the roller

Catene da trasporto a **perni forati** / **Hollow Pins Conveyor Chains**


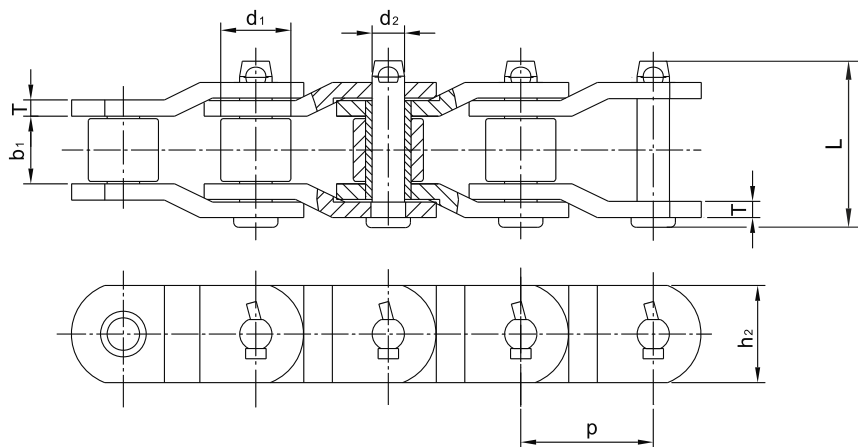
| Catena<br>Chain | Passo<br>Pitch | Diam. Bussola<br>Bush Diameter | Larghezza interna<br>Width between inner plates | Diametro Perno<br>Pin diameter |                    | Lungh. catena ribadita<br>Riveted chain length |                    | Altezza piastra<br>Inner plate depth | Spessore piastra<br>Plate thickness | Carico di rottura min.<br>Ultimate tensile strength | Tipo<br>Type |
|-----------------|----------------|--------------------------------|---|--------------------------------|--------------------|--|--------------------|--------------------------------------|-------------------------------------|---|--------------|
|                 | p              | d <sub>1</sub> max             | b <sub>1</sub> min                              | d <sub>2</sub> max             | d <sub>3</sub> max | L max  | L <sub>c</sub> max | h <sub>2</sub> max                   | t/T                                 | Q min   |              |
|                 | mm             | mm                             | mm  | mm                             | mm                 | mm   | mm                 | mm                                   | mm                                  | KN  |              |
| 08BHFb          | 12.70          | 8.51                           | 9.5   | 6.55                           | 5.0                | 18.15  | -                  | 11.81                                | 1.6                                 | 11.1  | A            |
| P40HP           | 40             | 18.0                           | 22.0  | 12.0                           | 8.0                | 47.2   | 48.8               | 35.0                                 | 5.0                                 | 59  | B            |
| C60HP           | 19.05          | 11.91                          | 12.61   | 8.33                           | 6.0                | 25.8   | 27.5               | 18.08                                | 2.4                                 | 26.9  | B            |
| 80HPc           | 25.4           | 15.88                          | 15.75   | 11.4                           | 8.4                | 32.6   | 33.8               | 24.0                                 | 3.2                                 | 45  | A            |

Catena a Rullo: nella tabella d1 indica il diametro esterno del rullo  
 Roller Chain: d1 in the table indicates the external diameter of the roller

Catene da trasporto a **perni forati** / **Hollow Pins** Conveyor Chains



| Catena<br>Chain | Passo<br>Pitch | Diam.<br>Rullo<br>Roller<br>Diameter | Larghezza<br>interna<br>Width<br>between<br>inner<br>plates | Diametro Perno<br>Pin diameter |                       | Lungh. catena<br>ribadita<br>Riveted chain<br>length |                       | Altezza<br>piastra<br>Inner<br>plate<br>depth | Spessore<br>piastra<br>Plate<br>thickness | Carico di<br>rottura<br>min.<br>Ultimate<br>tensile<br>strength | Tipo<br>Type |
|-----------------|----------------|--------------------------------------|---|--------------------------------|-----------------------|--|-----------------------|---|---|---|--------------|
|                 | p              | d <sub>1</sub><br>max                | b <sub>1</sub><br>min                                       | d <sub>2</sub><br>max          | d <sub>3</sub><br>max | L<br>max   | L <sub>c</sub><br>max | h <sub>2</sub><br>max                         | t/T                                       | Q<br>min  |              |
|                 | mm             | mm                                   | mm  | mm                             | mm                    | mm   | mm                    | mm  | mm  | KN  |              |
| 10BHB           | 15.875         | 10.16                                | 9.65  | 5.94                           | 4.10                  | 19.4   | 20.5                  | 14.72   | 1.7                                       | 17  | A            |
| C2052HB         | 31.75          | 19.05                                | 9.53  | 7.24                           | 5.13                  | 20.6   | 22.1                  | 14.73   | 2.0                                       | 17.92   | A            |
| P40HB           | 40.0           | 26.0                                 | 10.0  | 11.4                           | 8.20                  | 27.0   | 29.0                  | 24.0  | 3.0                                       | 32  | A            |
| P50HB           | 50.0           | 20.0                                 | 14.0  | 9.0                            | 6.2                   | 28.5   | 30.3                  | 20.0  | 2.5                                       | 20.42   | A            |
| P50.8HBa        | 50.8           | 30.0                                 | 10.0  | 11.7                           | 8.10                  | 26.6   | 27.8                  | 26.0  | 3.0                                       | 60  | B            |
| P50.8HBb        |                |                                      |   | 11.4                           | 8.20                  |  |                       |   |   |   |              |
| P63HB           | 63.0           | 30.0                                 | 10.0  | 11.7                           | 8.10                  | 26.6   | 27.8                  | 26.0  | 3.0                                       | 50  | B            |

Catene a maglie false per **trasmissioni pesanti** / **Heavy Duty Cranked-link Transmission Chains**

**SERIE AMERICANA / AMERICAN SERIES**

| Catena<br>Chain | Passo<br>Pitch | Diam.<br>Rullo<br>Roller<br>diameter | Larghezza<br>interna<br>Width<br>between<br>inner plates | Diametro<br>Perno<br>Pin<br>diameter | Largh.<br>catena<br>ribadita<br>Riveted<br>chain width | Altezza<br>piastra<br>Inner plate<br>depth | Spessore<br>piastra<br>Plate<br>thickness | Carico di<br>rottura<br>min.<br>Ultimate<br>tensile<br>strength | Carico di<br>rottura<br>medio<br>Average<br>tensile<br>strength | Peso al<br>metro<br>Weight<br>per meter |
|-----------------|----------------|--------------------------------------|--|--------------------------------------|--|--|---|---|---|---|
|                 | P              | d <sub>1</sub><br>max                | b <sub>1</sub><br>min                                    | d <sub>2</sub><br>max                | L<br>max   | h <sub>2</sub><br>max                      | T   | Q <sub>min</sub>  | Q <sub>0</sub>  | q<br>≈                                  |
|                 | mm             | mm                                   | mm   | mm                                   | mm   | mm   | mm  | kN  | kN  | kg/m                                    |
| 2010            | 63.50          | 31.75                                | 38.10  | 15.90                                | 90.70  | 47.80                                      | 7.90                                      | 250.00  | 270.00  | 14.00                                   |
| 2512            | 77.90          | 41.28                                | 39.60  | 19.05                                | 100.00   | 57.00                                      | 9.70                                      | 340.00  | 367.20  | 18.40                                   |
| 40SL INOX       | 78.11          | 31.75                                | 31.75  | 15.90                                | 89.65  | 38.00                                      | 9.50                                      | 265.60  | 300.00  | 10.40                                   |
| 2814            | 88.90          | 44.45                                | 38.10  | 22.25                                | 117.60   | 60.50                                      | 12.70                                     | 470.00  | 507.60  | 25.10                                   |
| 3315            | 103.45         | 45.24                                | 49.30  | 23.85                                | 134.90   | 63.50                                      | 14.20                                     | 550.00  | 594.00  | 27.30                                   |
| 3618            | 114.30         | 57.15                                | 52.30  | 27.97                                | 141.20   | 79.20                                      | 14.20                                     | 760.00  | 820.80  | 38.20                                   |
| MXS882          | 66.27          | 22.23                                | 28.58  | 11.10                                | 68.50  | 28.50                                      | 6.40                                      | 115.60  | 124.80  | 5.30                                    |





INDUSTRIES